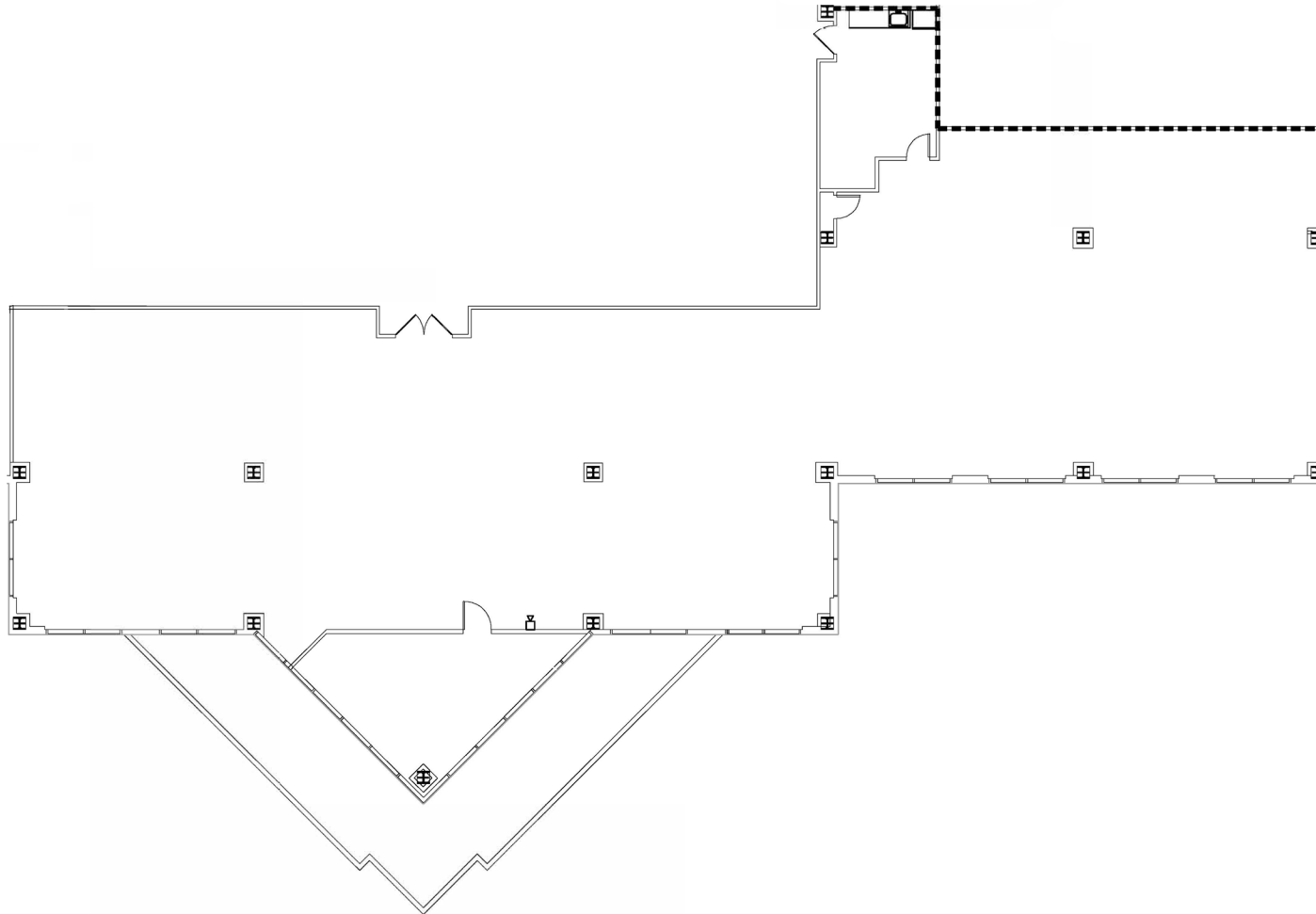
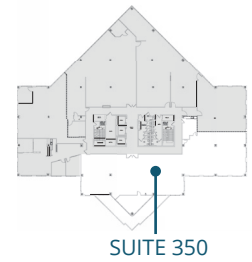


SPACE AVAILABLE

SUITE 350: 6,545 RSF



THE POINTE AT 1901
1901 Ulmerton Road
Clearwater, FL

No warranty or representation, expressed or implied, is made to the accuracy of information contained herein, and same is submitted subject to errors, change of price, rental or other conditions, withdrawal without notice, and to any special listing conditions imposed by our principals. PLANS NOT TO SCALE

NICK POLO | SENIOR ASSOCIATE
Nick.Polo@FranklinSt.com | 813.682.6194

CHAD RUPP | MANAGING DIRECTOR
Chad.Rupp@FranklinSt.com | 813.345.5891

 **FranklinStreet**
Licensed Real Estate Broker | FranklinSt.com