

20  
25

# M

ST



Leasing Information:  
202.513.6700

**Adam Biberaj**  
202.513.6736  
abiberaj@lpc.com

**Merrill Turnbull**  
202.513.6713  
mturnbull@lpc.com

**Tim Whitebread**  
202.513.6712  
twhitebread@lpc.com

# Lincoln

Lincoln Property Company  
101 Constitution Avenue, NW Suite 325 East  
Washington, DC 20001

[www.lpc.com](http://www.lpc.com)



**Property Highlights**

- Top floor available
- Signage opportunity available
- Efficient floor plans with three sides of glass
- Private rooftop lounge and on-site parking (1/1,200 SF)
- Direct access to transportation and major thoroughfares
- Proximity to over 200 restaurants and 8 high-end hotels
- 2 blocks from Dupont Circle Metro

**Availabilities**

**SF**

**Lease Rate**

**Date Available**

Suite 500	8,695 SF	Negotiable	Immediately
Suite 610	4,721 SF	\$46.00 FS	Immediately
Suite 700	25,121 SF	\$49.00 FS	Immediately
Suite 800	25,121 SF	\$49.00 FS	Immediately
Office / Retail	2,000 - 12,956 SF	Negotiable	Immediately

**Adam Biberaj**

202.513.6736  
abiberaj@lpc.com

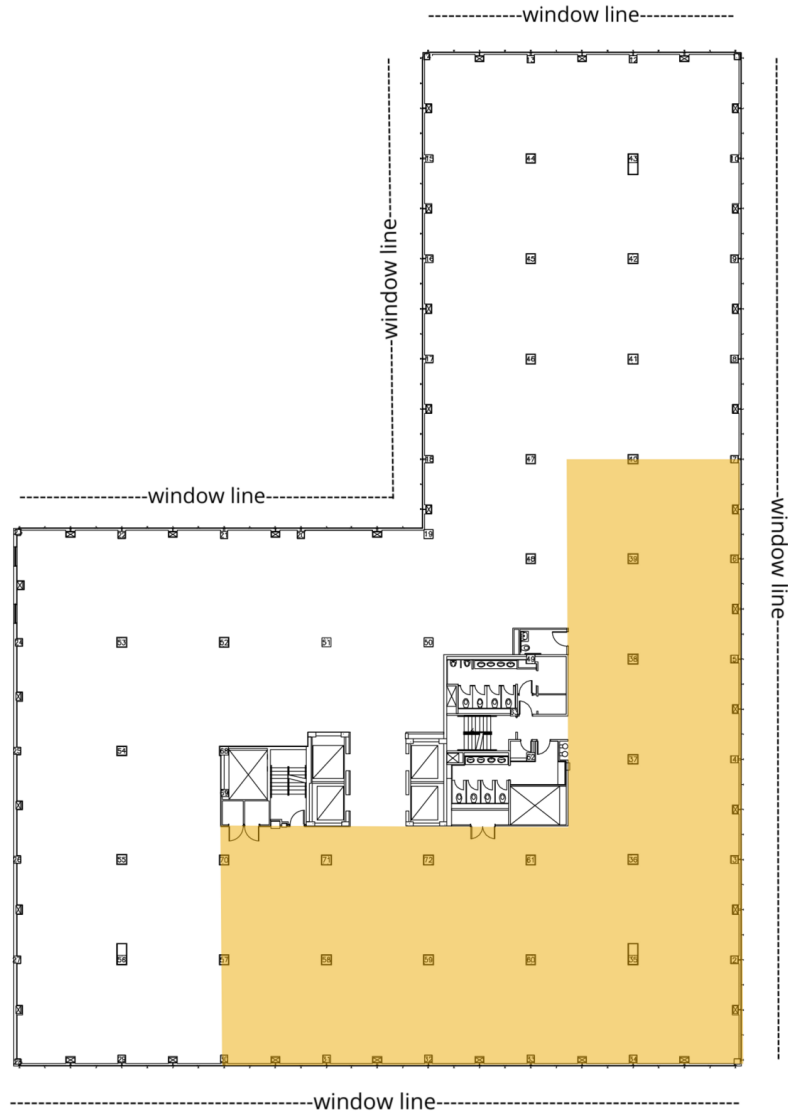
**Merrill Turnbull**

202.513.6713  
mturnbull@lpc.com

**Tim Whitebread**

202.513.6712  
twhitebread@lpc.com

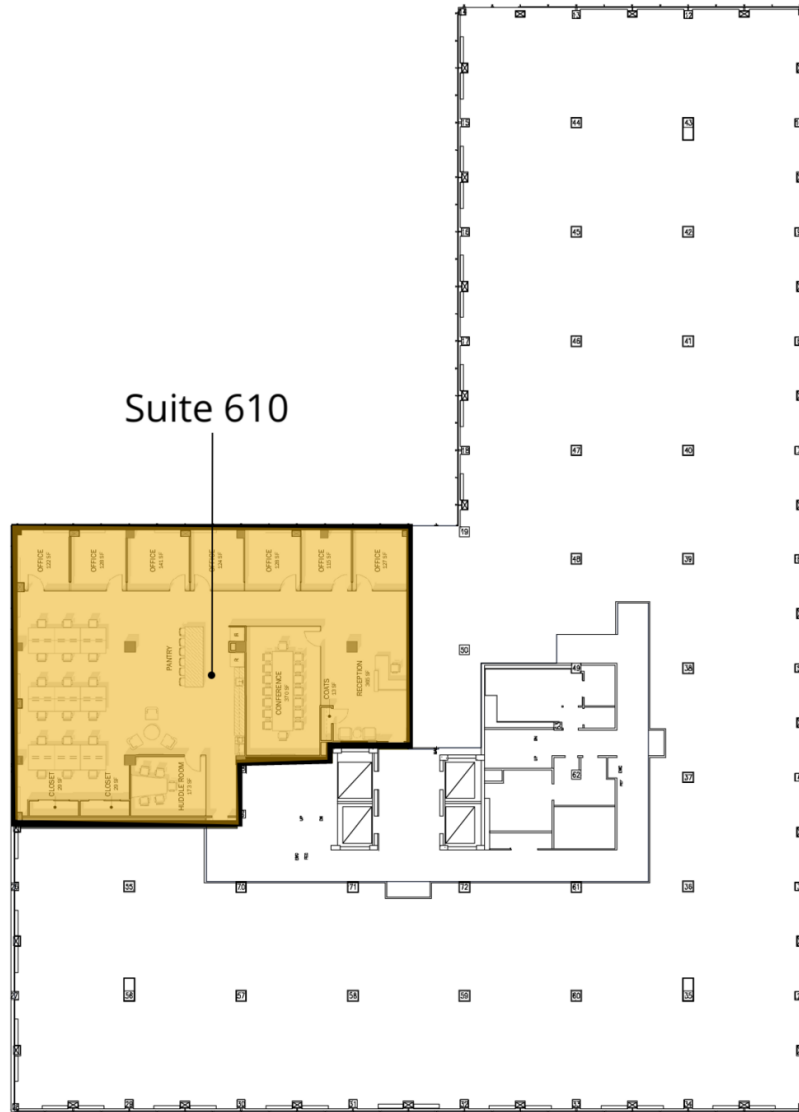
**Lincoln**



Suite	Size	Lease Rate	Description
■ Suite 500	8,695 SF	Negotiable	Front of the building office intensive layout with fantastic elevator exposure

Adam Biberaj    Merrill Turnbull    Tim Whitebread  
 202.513.6736    202.513.6713    202.513.6712  
 abiberaj@lpc.com    mturnbull@lpc.com    twhitebread@lpc.com

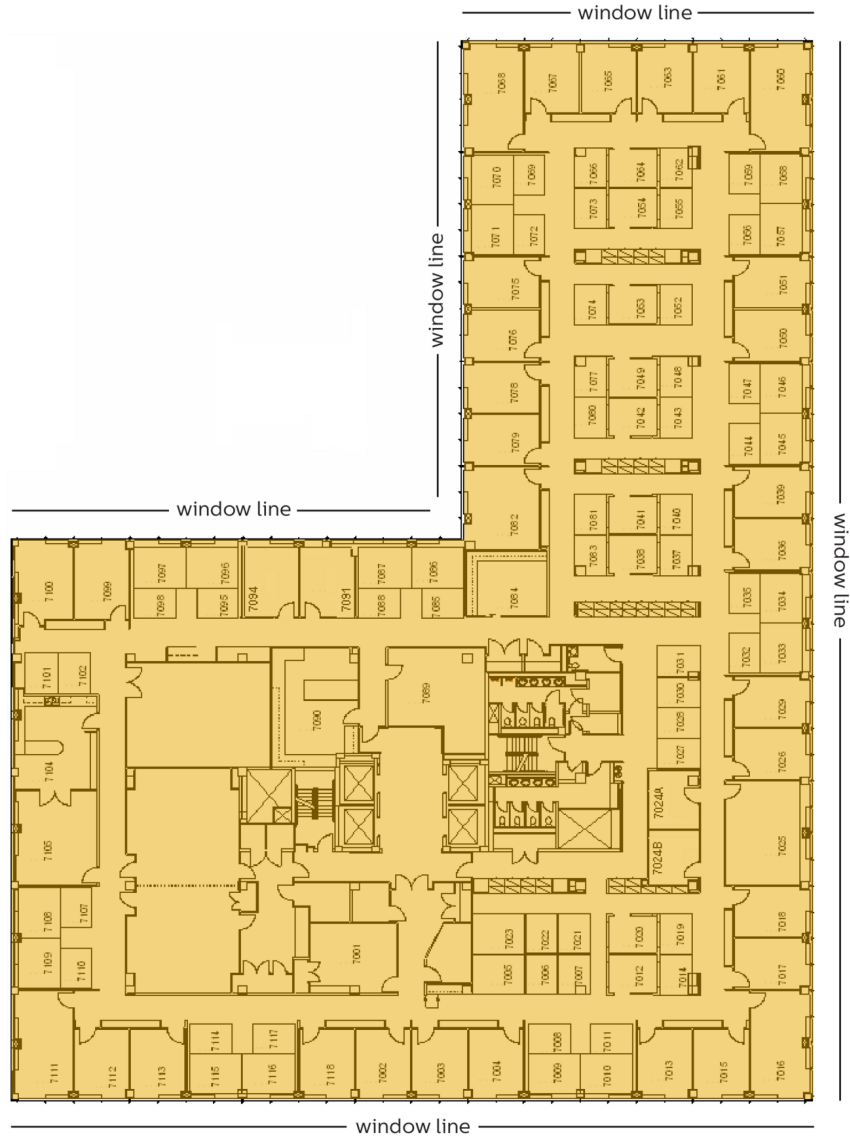
Lincoln



Suite	Size	Lease Rate	Description
■ Suite 610	4,721 SF	\$46.00 FS	Hypothetical Floorplan Shown.

Adam Biberaj    Merrill Turnbull    Tim Whitebread  
 202.513.6736    202.513.6713    202.513.6712  
 abiberaj@lpc.com    mturnbull@lpc.com    twhitebread@lpc.com

Lincoln



Suite	Size	Lease Rate	Description
■ Suite 700	25,121 SF	\$49.00 FS	Available Immediately

Adam Biberaj    Merrill Turnbull    Tim Whitebread  
 202.513.6736    202.513.6713    202.513.6712  
 abiberaj@lpc.com    mturnbull@lpc.com    twhitebread@lpc.com

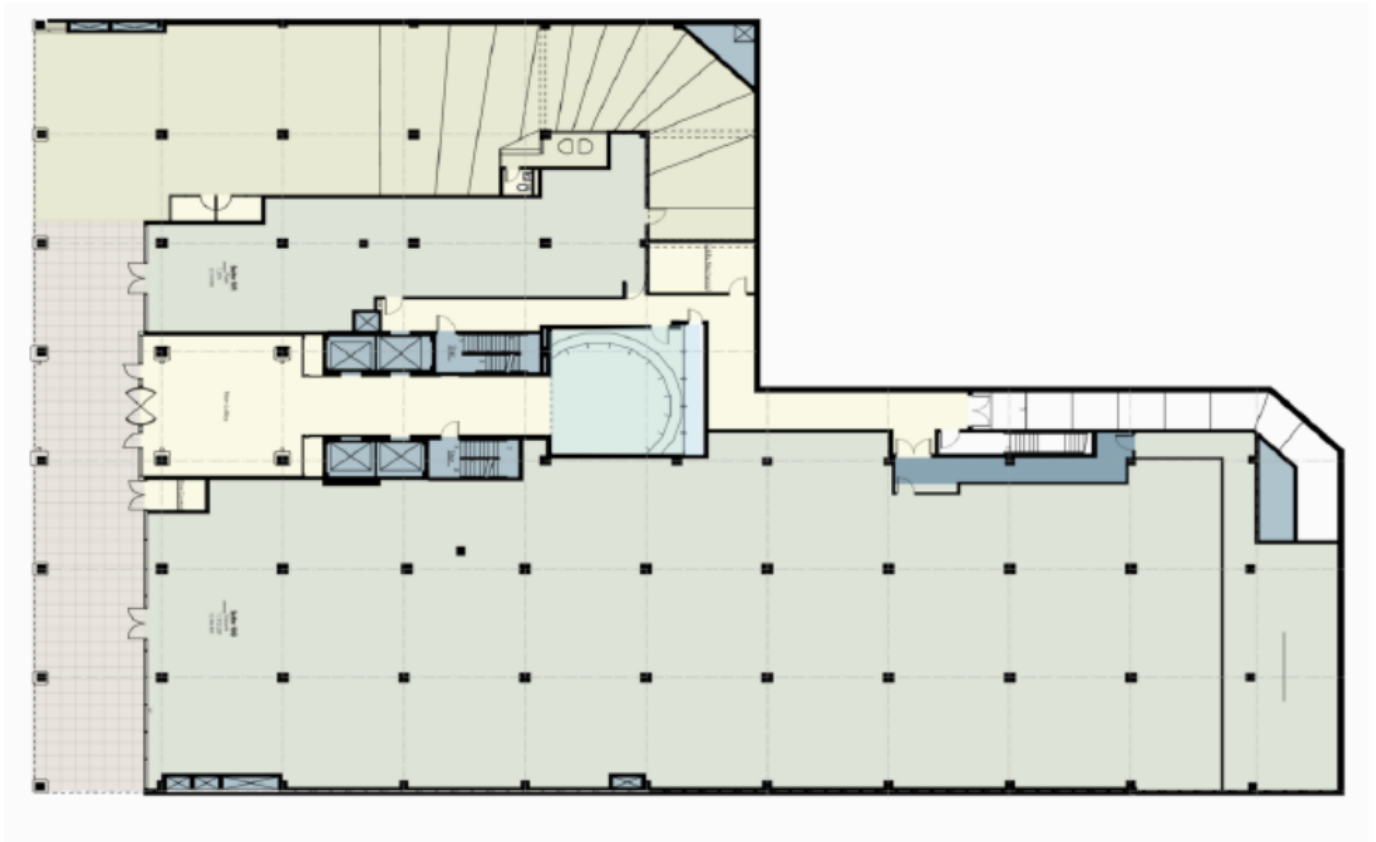




Suite	Size	Lease Rate	Description
■ Suite 800	25,121 SF	\$49.00 FS	Full top floor available immediately

Adam Biberaj    Merrill Turnbull    Tim Whitebread  
 202.513.6736    202.513.6713    202.513.6712  
 abiberaj@lpc.com    mturnbull@lpc.com    twhitebread@lpc.com





Suite	Size	Lease Rate	Description
■ Office / Retail	2,000 - 12,956 SF	Negotiable	Direct access off of M Street with possibility for connectivity to building lobby. Existing classroom buildout with private restrooms and 14' ceilings! Retail signage available!

Adam Biberaj    Merrill Turnbull    Tim Whitebread  
 202.513.6736    202.513.6713    202.513.6712  
 abiberaj@lpc.com    mturnbull@lpc.com    twhitebread@lpc.com

**Lincoln**



20  
25

**M**

ST

Leasing Information:  
202.513.6700

**Adam Biberaj**  
202.513.6736  
abiberaj@lpc.com

**Merrill Turnbull**  
202.513.6713  
mturnbull@lpc.com

**Tim Whitebread**  
202.513.6712  
twhitebread@lpc.com

**Lincoln**

Lincoln Property Company  
101 Constitution Avenue, NW Suite 325 East  
Washington, DC 20001

[www.lpc.com](http://www.lpc.com)