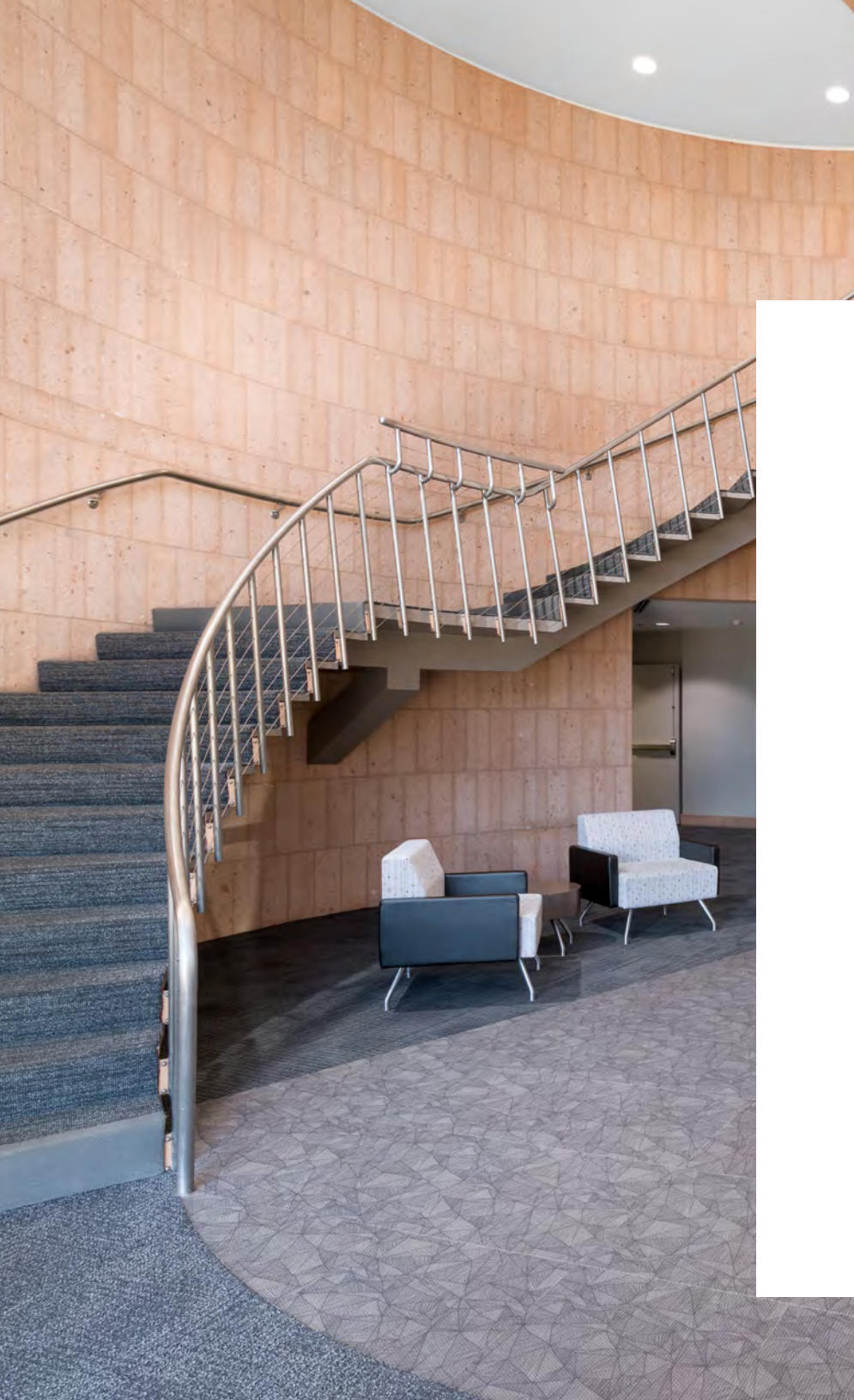




NORTH COUNTY CORPORATE CENTER

Class A Office Space For Lease

277 Rancheros Drive,
San Marcos, CA 92069



PROPERTY OVERVIEW



Outstanding freeway visibility,
frontage and exposure to Highway 78



Floor to ceiling window line
with gorgeous views



Adjacent to
San Marcos Creek



Located off of Twin Oaks Valley Road
and walking distance to San Marcos
Sprinter Light Rail Station



4.0/1,000
parking ratio



\$2.75/SF/month, plus Electric
including Janitorial Services



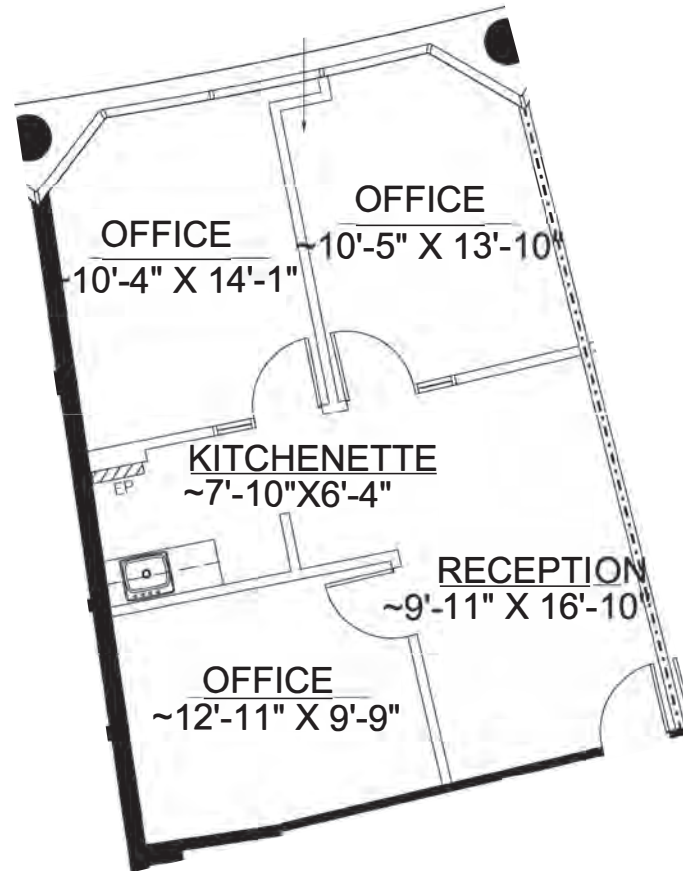
Walking trail to
adjacent retail center



Solar powered electric vehicle
charging stations

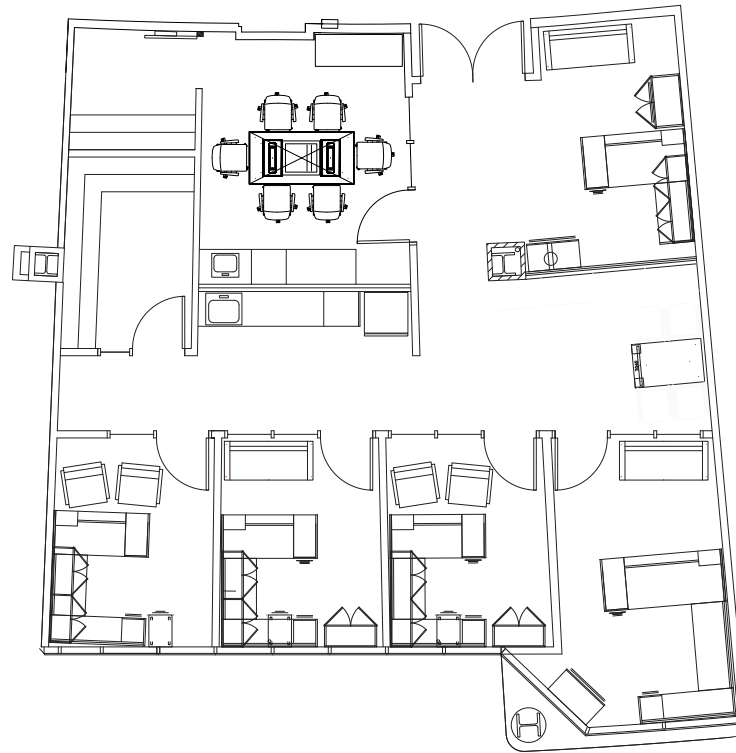
FLOOR PLANS

SUITE 160 - 810 SF | \$2.75/SF + ELECTRIC



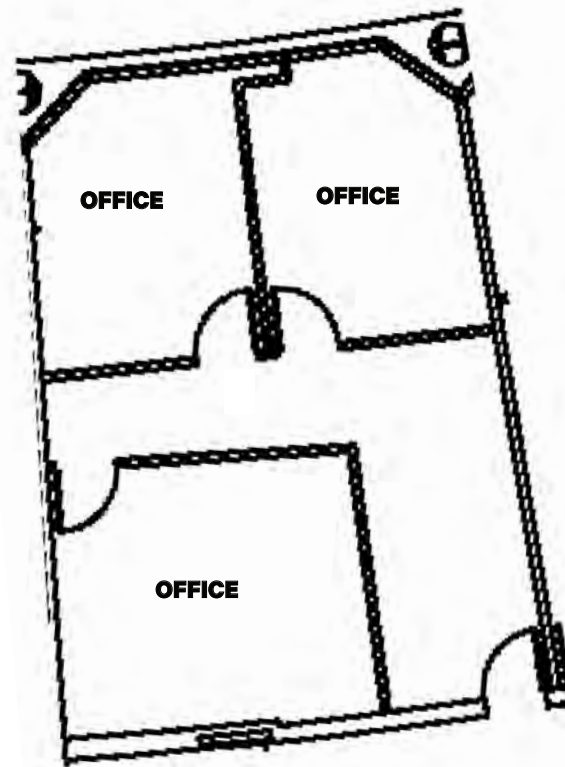
FLOOR PLANS

SUITE 310 - 1,616 SF | \$2.75/SF + ELECTRIC



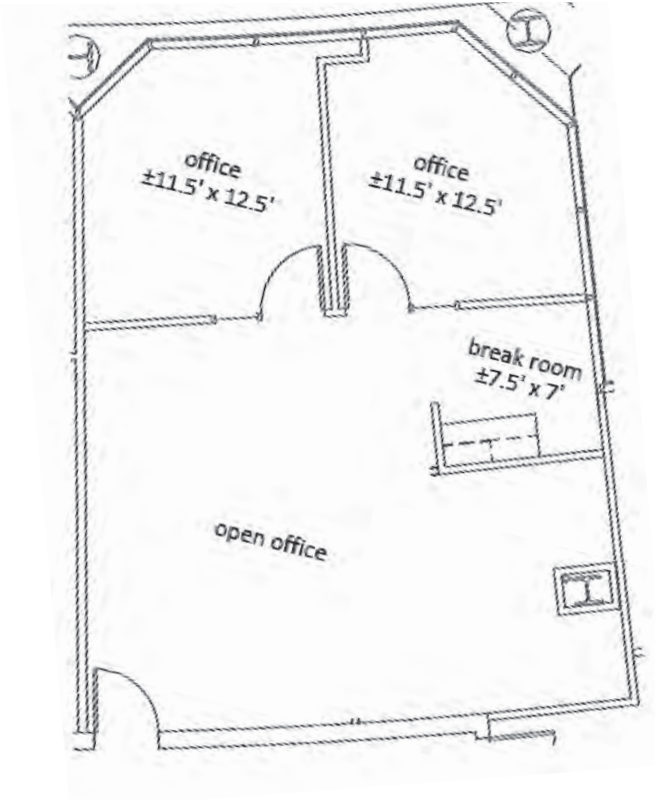
FLOOR PLANS

SUITE 360 – 839 SF | \$2.75/SF + ELECTRIC | 30 DAY NOTICE



FLOOR PLANS

SUITE 365 – 908 SF | \$2.75/SF + ELECTRIC





NORTH COUNTY CORPORATE CENTER



AMENITIES

E Mission Rd



San Marcos Library



San Marcos City Hall



San Marcos Civic Center



New 650 unit residential development by Shea/Lennar

Twin Oaks Valley Road

North City - Future Downtown of all North County (www.northcity.com)



LOCATION



Walking distance to San Marcos
Sprinter Light Rail Station



Adjacent to San Marcos City Hall, San Marcos
Public Library and Community Center



Across the freeway from
CSU-San Marcos



Proximity to restaurants, hotels, and
residential communities of San Marcos



NORTH COUNTY CORPORATE CENTER



Twin Oaks Valley Road

CAL STATE SAN MARCOS

CHRIS WILLIAMS

Senior Vice President

Lic. 01791013

+1 858 761 7376

chris.williams1@cbre.com

VICTORIA SOTO

Sales Assistant

Lic. 02139648

+1 858 546 2675

chris.williams1@cbre.com

CBRE

© 2025 CBRE, Inc. All rights reserved. This information has been obtained from sources believed reliable but has not been verified for accuracy or completeness. CBRE, Inc. makes no guarantee, representation or warranty and accepts no responsibility or liability as to the accuracy, completeness, or reliability of the information contained herein. You should conduct a careful, independent investigation of the property and verify all information. Any reliance on this information is solely at your own risk.