

# FOR LEASE 1,550 RSF

**Ashwood Commons** 1200 Ashwood Drive, Suite 1203, Canonsburg, PA 15317



## PROPERTY HIGHLIGHTS

- Corner Suite with lots of Windows
- 4 Offices
- Conference Room
- Open Area
- Private Restroom
- Accessibility to Route 19 and I-79
- Located in Ashwood Commons Office Park

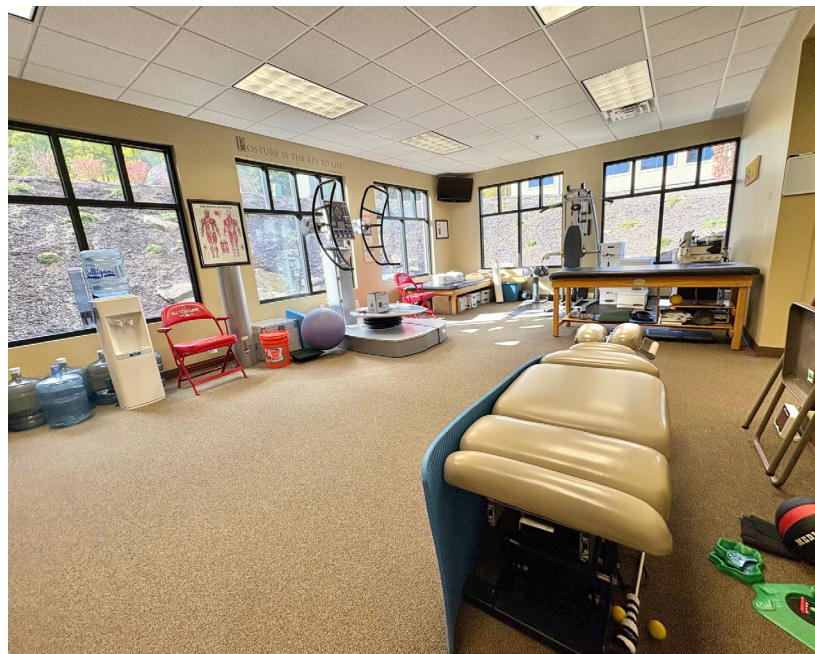


**KELLEY HECKATHORNE, SIOR**  
+1 412 670 4248  
khoover@naiburnsscalo.com

**NAI Burns Scalo**  
Brokerage Services

# PHOTOGRAPHY

Ashwood Commons 1200 Ashwood Drive, Suite 1203, Canonsburg, PA 15317



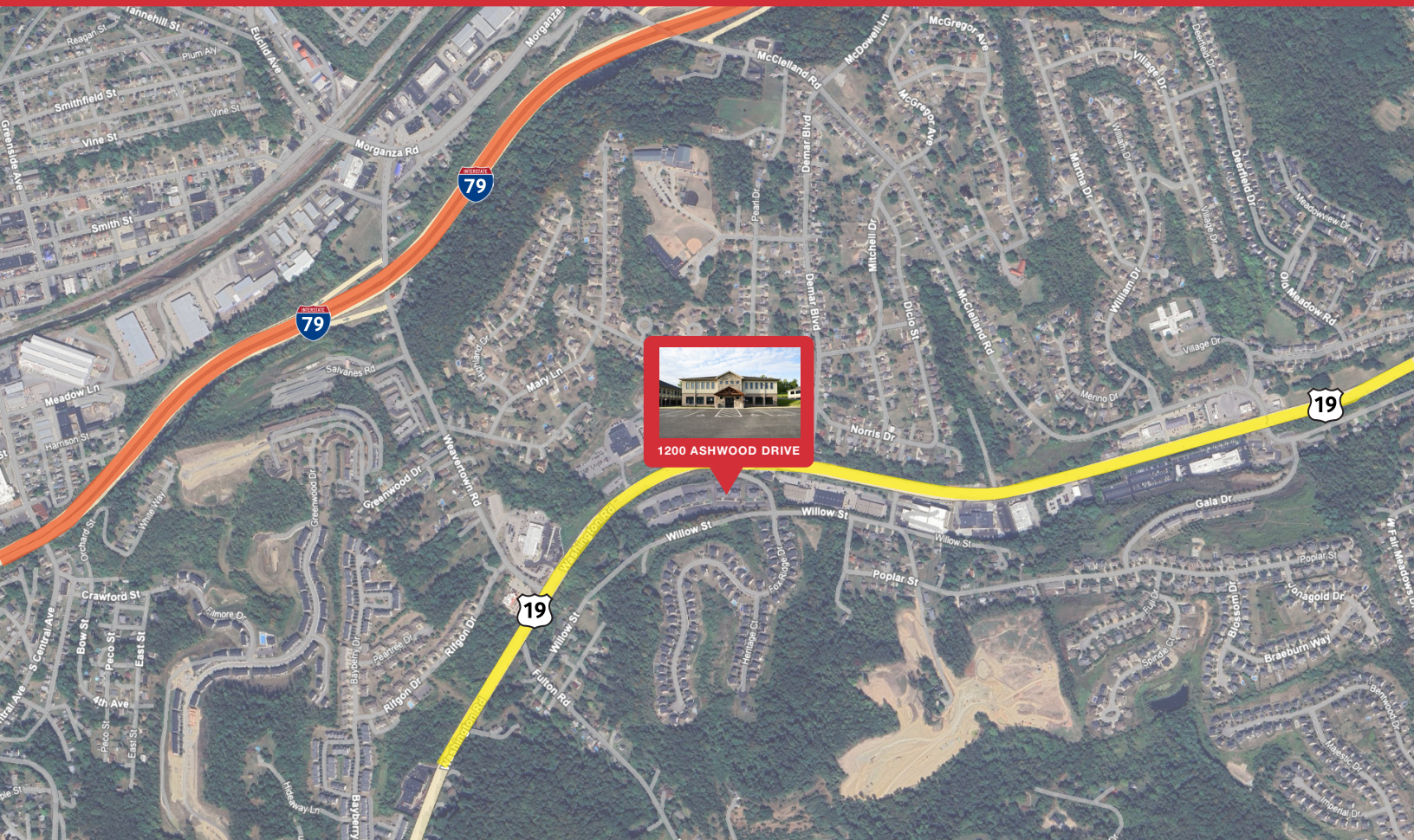
**KELLEY HECKATHORNE, SIOR**  
+1 412 670 4248  
khoover@naiburnsscalo.com

**NAI Burns Scalo**  
Brokerage Services



# PROXIMITY TO HIGHWAYS

Ashwood Commons 1200 Ashwood Drive, Suite 1203, Canonsburg, PA 15317



**KELLEY HECKATHORNE, SIOR**  
+1 412 670 4248  
khoover@naiburnsscalo.com

**NAI Burns Scalo**  
Brokerage Services