

190 E POST RD



As exclusive agents for the building we are pleased to present

Great sun-lit office space ready for custom finished.

Suite 401

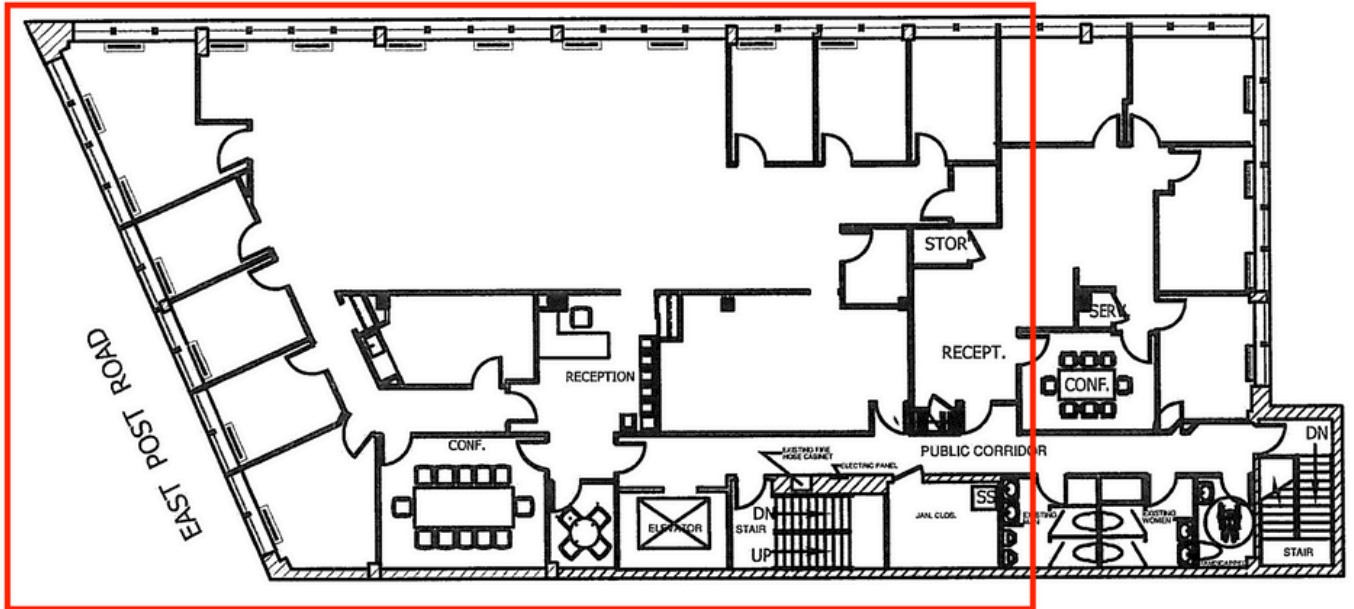
SIZE: 3,823 RSF

- 8 windowed offices;
- 2 interior conference rooms;
- Small interior meeting room
- Large bullpen;
- Pantry area;
- IT/storage closets;
- Reception;
- Will be delivered in clean move-in ready condition.

ASKING RENT: Inquire



CURRENT LAYOUT



4th FLOOR LAYOUT PLAN

NOT TO SCALE

CONTACT DETAILS

Joshua Winslow

917-450-4538

josh@way2winnyc.com

Although information contained herein has been obtained from sources deemed reliable, neither Way2Win Management, Beekman Properties, nor any of their clients make any guarantees or representations, express or implied, as to the completeness or accuracy of such information. Neither Way2Win Management, Beekman Properties, nor any of their clients accepts any liability for loss resulting from reliance on such information. Any property offered for lease may be withdrawn without notice.

190 E POST RD



WAY2WIN
MANAGEMENT

As exclusive agents for the building we are pleased to present

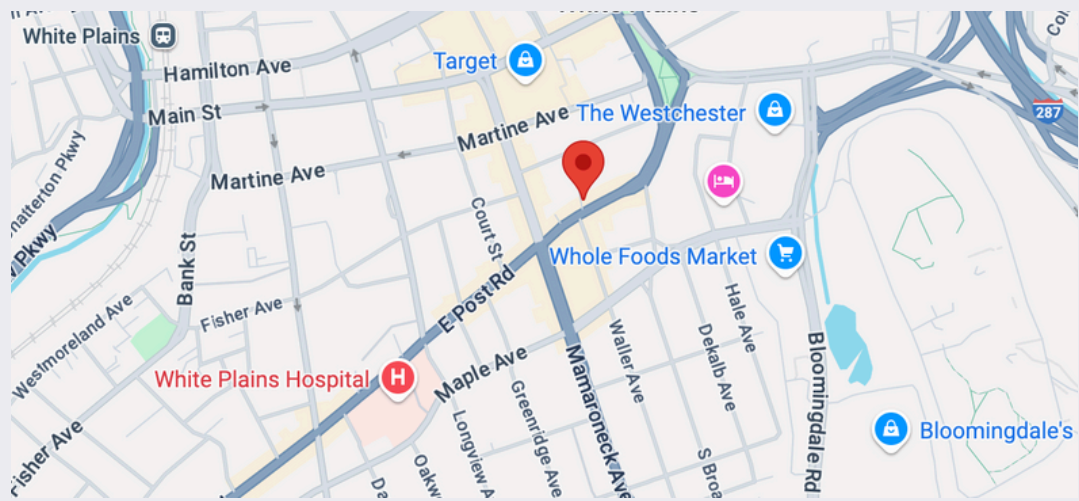


THE LOBBY



ABOUT THIS PROPERTY

- 1 passenger elevator
- Flexible lease term and sizes
- Multiple Parking Garages nearby



CONTACT DETAILS

Joshua Winslow

917-450-4538

josh@way2winnyc.com

Although information contained herein has been obtained from sources deemed reliable, neither Way2Win Management, Beekman Properties, nor any of their clients make any guarantees or representations, express or implied, as to the completeness or accuracy of such information. Neither Way2Win Management, Beekman Properties, nor any of their clients accepts any liability for loss resulting from reliance on such information. Any property offered for lease may be withdrawn without notice.