



**MEDICAL ASSET
MANAGEMENT**
MEDICAL PROPERTY SPECIALISTS



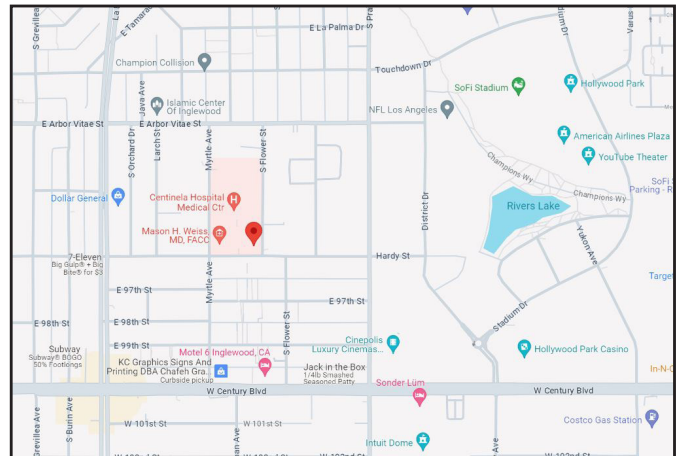
Centinela Medical Center | 501-575 E Hardy Street | Inglewood, CA
Medical Office Suites For Lease

Available Suites	Sq. Ft.	Rental Rate
501 Suite 110	1,810 RSF	\$3.00/SF FSG
501 Suite 400	5,925 RSF	\$3.00/SF FSG
501 Suite 424	1,025 RSF	\$3.00/SF FSG
575 Suite 212	1,386 RSF	\$3.00/SF FSG

Term 3 to 5 years

Features

- On Campus at Centinela Hospital
- Adjacent to 105 and 405 freeways
- Close proximity to the Forum, SoFi Stadium, and Intuit Dome
- Located in the white-hot market of Inglewood which is experiencing growth and redevelopment



Contact

Alphonzo Hicks
(818) 616-7210
alphonzoh@medicalasset.com
DRE#: 02032369

Mitch Yankowitz
(310) 517-4861
mitchy@medicalasset.com
DRE#: 01360137

www.medicalasset.com

South Bay
201 Continental Blvd., Ste. 210
El Segundo, CA 90245

Downtown Los Angeles
1400 S. Grand Ave., Ste. 808
Los Angeles, CA 90015

San Fernando Valley
5411 Eriwanda Ave., Ste. 208
Tarzana, CA 91356

Long Beach
1040 Elm Ave., Ste. 308
Long Beach, CA 90813

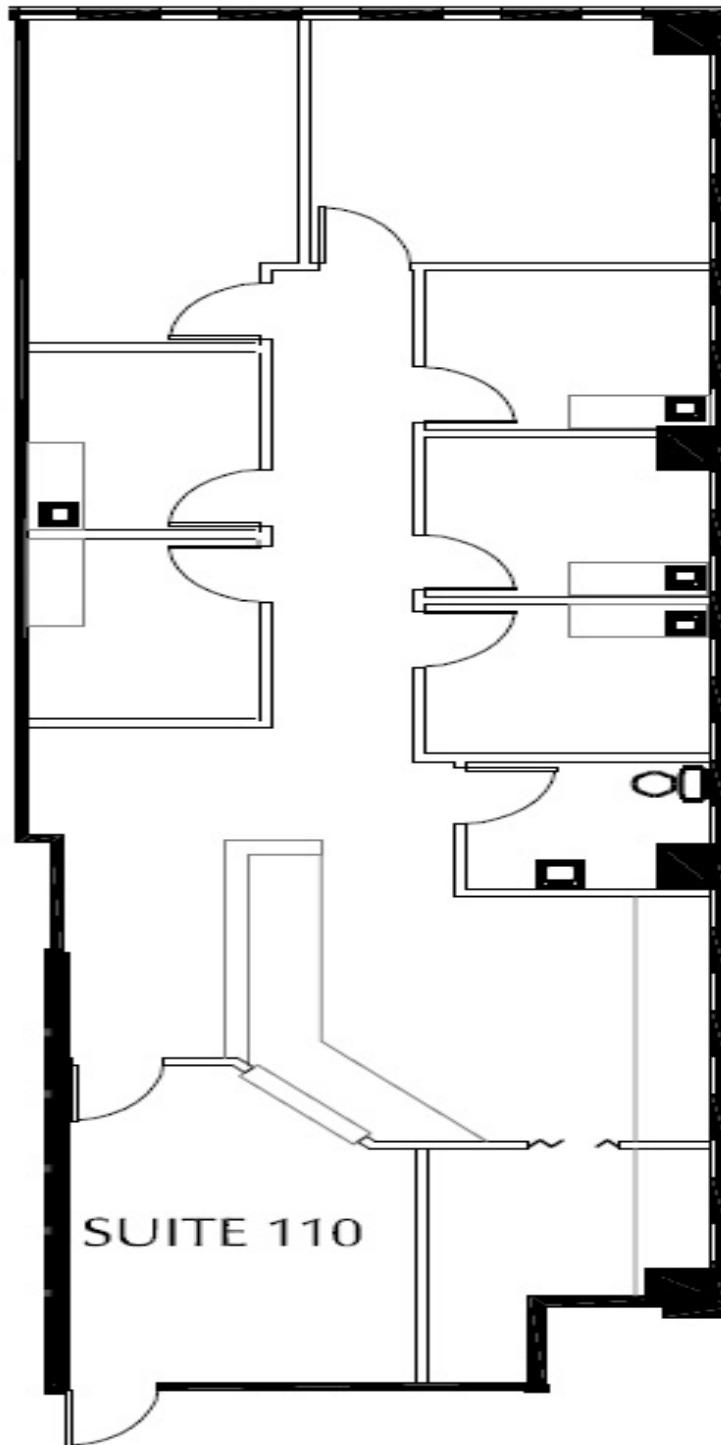


**MEDICAL ASSET
MANAGEMENT**
MEDICAL PROPERTY SPECIALISTS

Centinela Medical Center | 501 E Hardy Street | Floor Plans

Suite 110

1,810 RSF



The information contained herein is deemed reliable, but cannot be guaranteed by Medical Asset Management and is subject to change.



**MEDICAL ASSET
MANAGEMENT**
MEDICAL PROPERTY SPECIALISTS

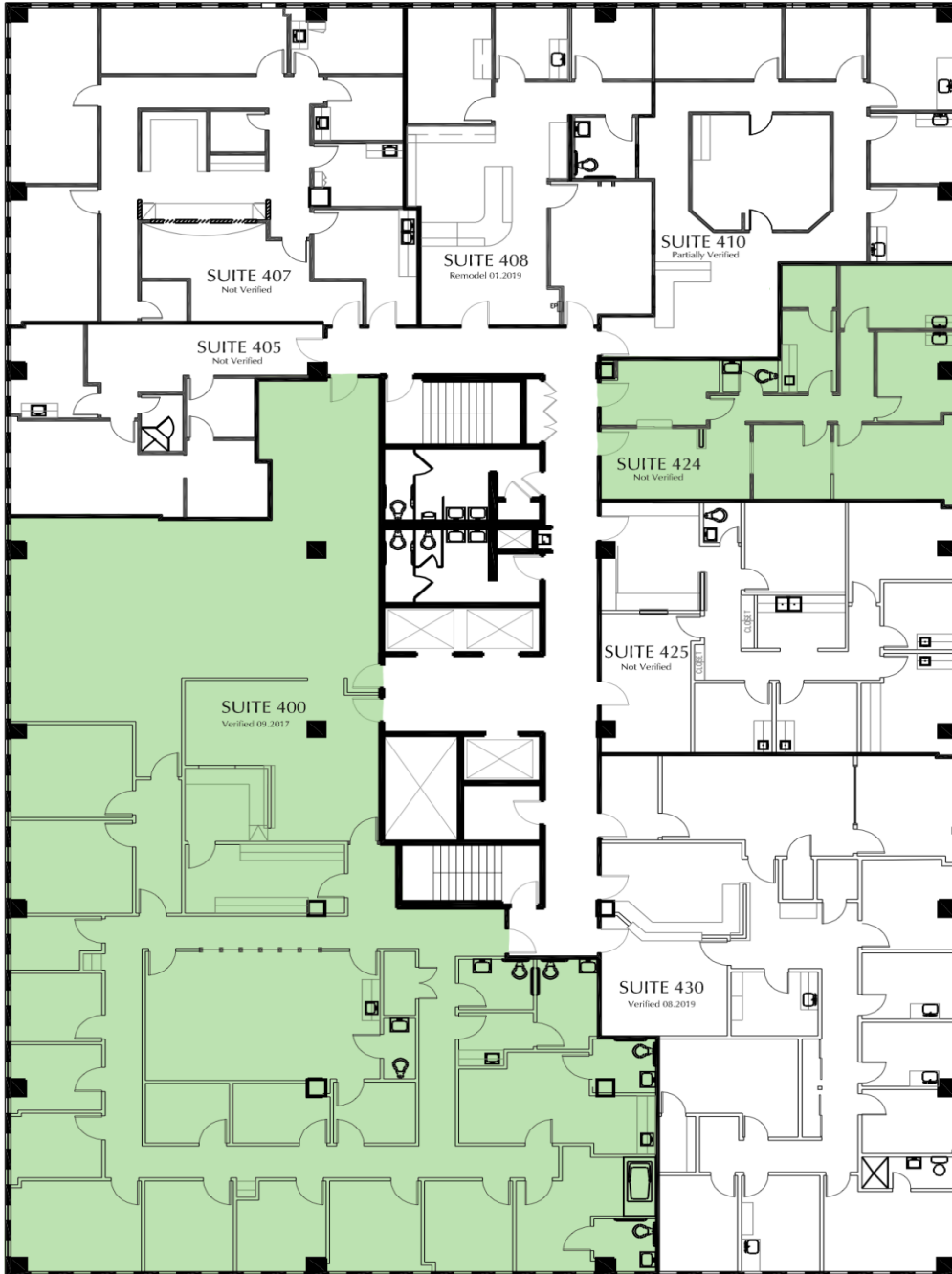
Centinela Medical Center | 501 E Hardy Street | Floor Plans

Suite 400

5,925 RSF

Suite 424

1,025 RSF



The information contained herein is deemed reliable, but cannot be guaranteed by Medical Asset Management and is subject to change.

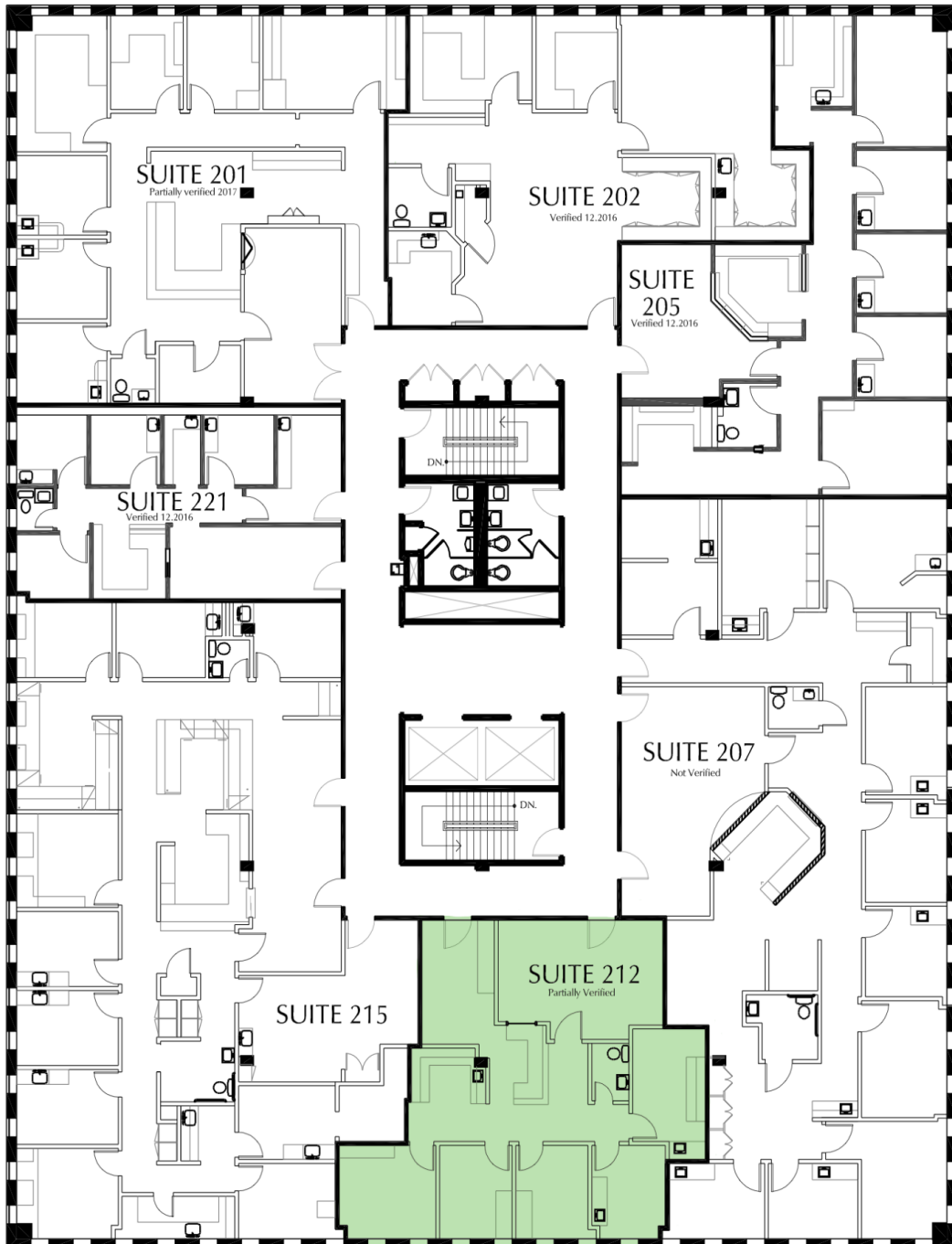


**MEDICAL ASSET
MANAGEMENT**
MEDICAL PROPERTY SPECIALISTS

Centinela Medical Center | 575 E Hardy Street | Floor Plans

Suite 212

1,386 RSF



The information contained herein is deemed reliable, but cannot be guaranteed by Medical Asset Management and is subject to change.