



# *Brunswick*



Located just moments from Old Street Roundabout, this self-contained HQ offers 10,800 sq ft of office and showroom space. The space can be tailored to suit a tenant's needs, whether delivered to a high-quality CATA specification or with a bespoke full fit-out. Bright, open-plan floor plates with modern air conditioning provide a flexible working environment, while the ground and lower ground floors feature prominent showroom frontage and are connected by an internal staircase. Tenants will also benefit from access to a private roof terrace which is ideal for informal meetings or downtime with stunning views. Surrounded by a vibrant mix of tech, creative, and professional occupiers, this is a rare opportunity in one of London's best-connected commercial hubs.

Link to Virtual Tour

<https://link.casaeprogetti.com/brunswick>



# Floors 1 to 3



# Ground Floor



# Lower Ground Floor



*Brunswick*













*Brunswick*





Ground Floor

Brunswick







*Brunswick*





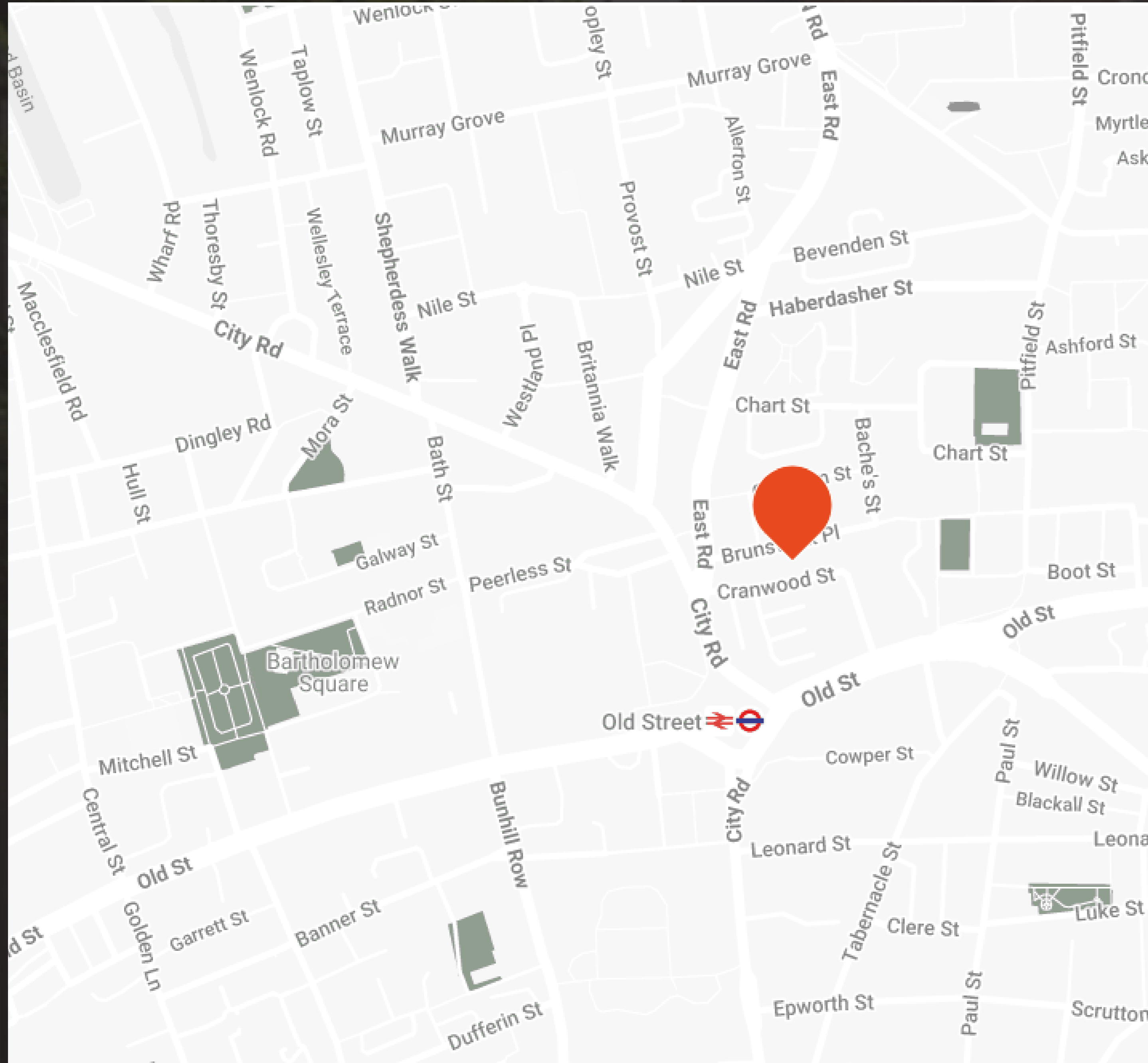


*Brunswick*









## Amenities

Modern air conditioning systems providing  
comfort across all floors

Brand new modern lighting

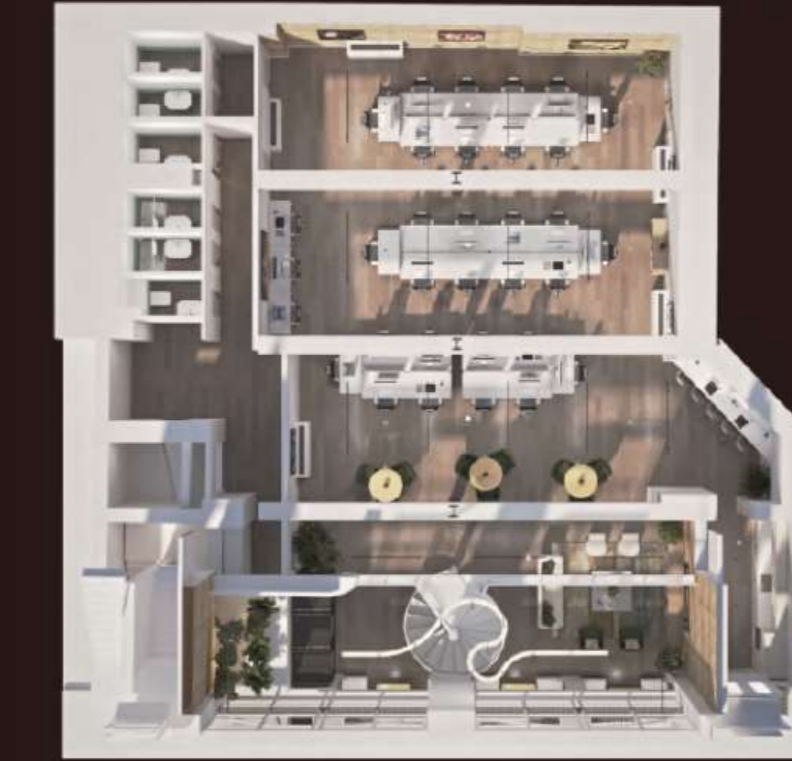
Passenger lift

End of journey shower facilities & secure  
cycle storage

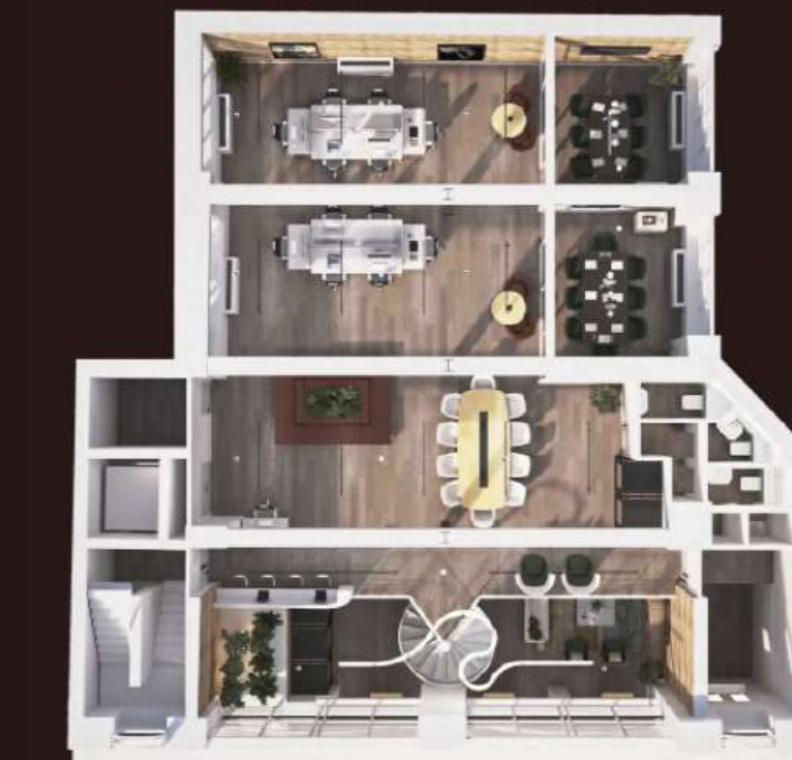
All floors can be delivered fully fitted,  
subject to terms

	Office	Communal	Total
Lower Ground Floor	220	76	296
Upper Ground Floor	190	21	211
First Floor	230	21	251
Second Floor	233	21	254
Third Floor	235	23	258
<b>Total</b>	<b>1108</b>	<b>162</b>	<b>1270</b>

All Areas in m2



LOWER GROUND FLOOR



UPPER GROUND FLOOR



FIRST, SECOND AND  
THIRD FLOOR



**20-26 Brunswick Place, Old Street, N1 6DZ - London**