



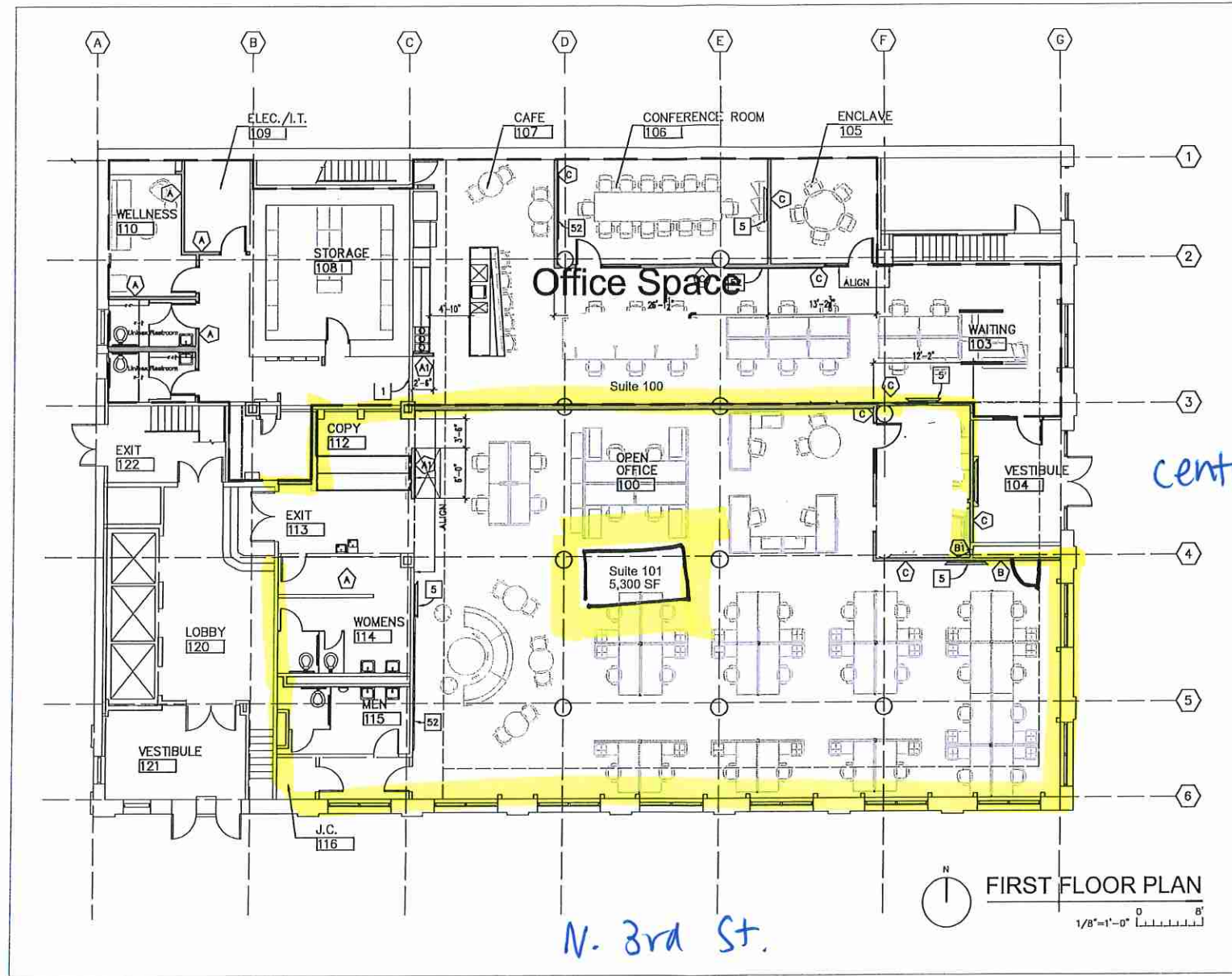



WALL LEGEND

-  EXISTING MASONRY BEARING WALL
-  EXISTING FRAME WALL
-  NEW NON RATED CONSTRUCTION
-  NEW DEMISING WALL- 1-HOUR RATED



VM Realty Group
 Gretchen Rice
 GRice@vmdgrp.com



Artefact, Inc.
 CHRISTINE USSLER, AIA
 26-28 EAST THIRD STREET
 BETHLEHEM, PA 18015
 610.861.0235 Phone
 610.861.9772 Fax
 www.artefactarchitecture.com
 Architecture | Sustainable Design | Preservation and Planning |

Architecture | Sustainable Design | Preservation and Planning | www.artefactarchitecture.com

ALTERATIONS TO:
ALPHA BUILDING FIRST FLOOR
 1 S 3rd St. Easton, PA 18042

First Floor-Alpha Building

PROJECT NUMBER:
 DRAWN BY:
 CHECKED BY:
 DATE: 2.20.24
 REVISION DATE:

