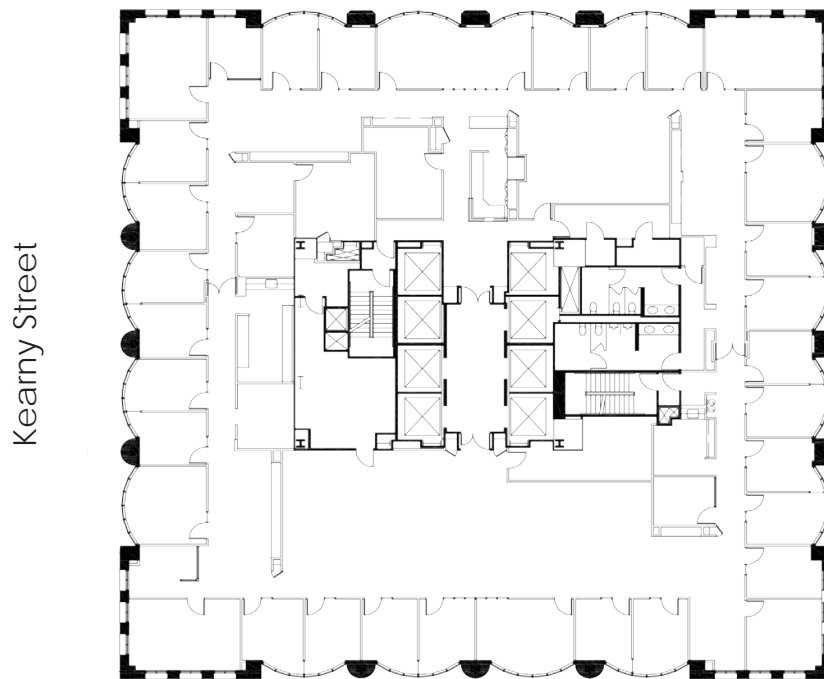


SUITE 1100 | FLOOR PLAN

580
CALIFORNIA

14,626 SQUARE FEET



Kearny Street

California Street

- Available now
- 29 private offices
- 3 partner offices
- 1 boardroom
- 3 meeting rooms
- Kitchen
- Open area
- IT room
- Can be combined with suite 900 & 1000 for a contiguous block of 44,084 RSF

FOR LEASING INFORMATION, PLEASE CONTACT OUR TEAM

WES POWELL
+1 415 395 4901
wesley.powell@jll.com
License #: 1702003

CHRISTOPHER HOLLAND
+1 415 354 6917
christopher.holland@jll.com
License #: 1474598

ANN MONTILLA
+1 415 395 7285
ann.montilla@jll.com
License #: 01889254



Jones Lang LaSalle Brokerage, Inc.
Real Estate License #: 01856260