

RETAIL SPACE

322 WEST 50TH STREET

Between Eighth and Ninth Avenues, Worldwide Plaza

MIDTOWN WEST

MANHATTAN | NY

1,810 SF
Available for Lease



RIPCO
REAL ESTATE

SPACE DETAILS

LOCATION

Between Eighth and Ninth Avenues, Worldwide Plaza

SIZE

Ground Floor 905 SF
Mezzanine 905 SF

RENT

Upon request

TERM

Negotiable

STATUS

Currently Barking Dog Hell's Kitchen

POSSESSION

Immediate

NEIGHBORS

Starbucks, Just Salad, New World Stages, Poke Inn, and Blue Dog Café

COMMENTS

Standalone building situated in the public plaza between Eighth and Ninth Avenues, with ample outdoor seating capacity

Vented restaurant space

Located at the base of a 455-unit residential tower and a 1.7M-SF office tower

Within one block from the E, C subway entrance, with over 6.9M riders annually

Customers can walk in from all over the West Side, including daytime workers and tourists from Midtown and Times Square/Theater District

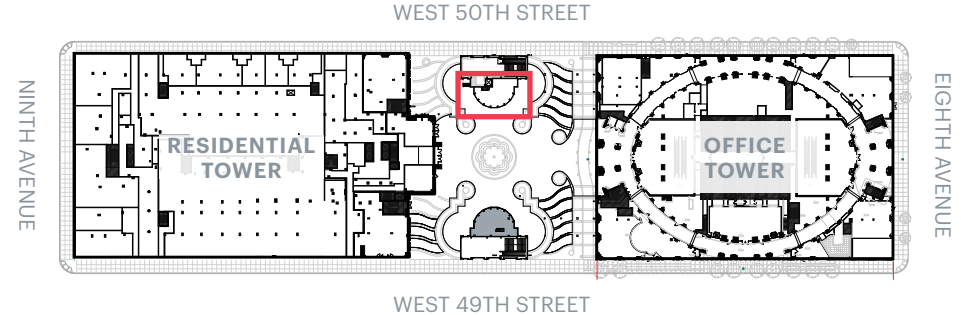
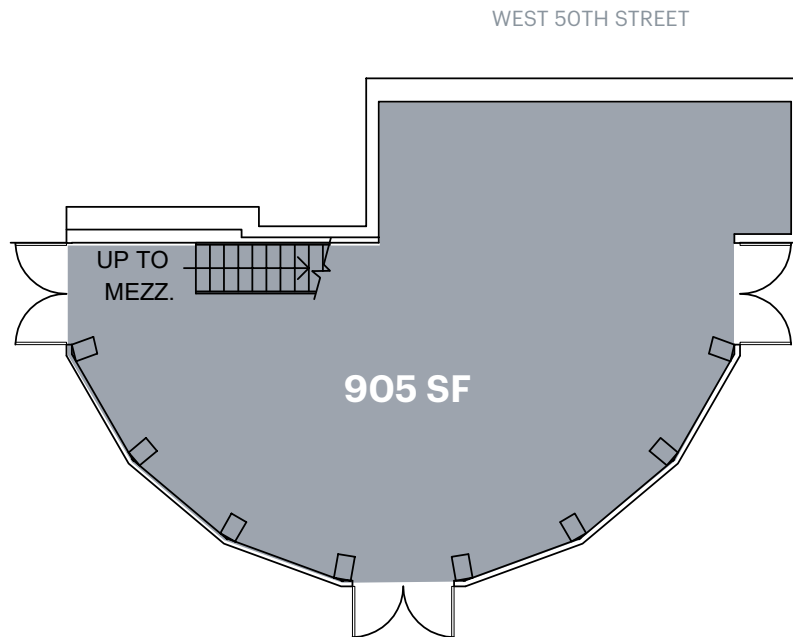
It is a short walk to Nordstrom's, Columbus Circle, Central Park and the Intrepid

TRANSPORTATION

2022 Ridership Report

50th Street	C E
Annual	4,126,925
Weekday	12,435
Weekend	17,852

GROUND FLOOR



AREA RETAIL



CONTACT EXCLUSIVE AGENTS

RICHARD SKULNIK
 rskulnik@ripcony.com
 212.750.0756

LINDSAY ZEGANS
 lzegans@ripcony.com
 646.827.9962

BEN SABIN
 bsabin@ripcony.com
 646.290.2018

MARY SCHWAGERL
 mschwagerl@ripcony.com
 212.230.5887