

# 1035 CAMBRIDGE ST., SUITE 26

CAMBRIDGE, MA 02141



### PROPERTY OVERVIEW

NEIGHBORHOOD	Inman Square
AVAILABLE SPACE	±7,136 SF
PROPERTY TYPE	Office
RBA	±75,600 SF
YEAR BUILT/RENOVATED	1930/1988
PARKING RATIO	1.00/1,000 SF
PARKING SPACES	147 surface
BUILDING AMENITIES	24/7 access with card readers; onsite parking; shower facilities; common area WiFi.



Mix of Open Space & Private Offices



1 Conference Room

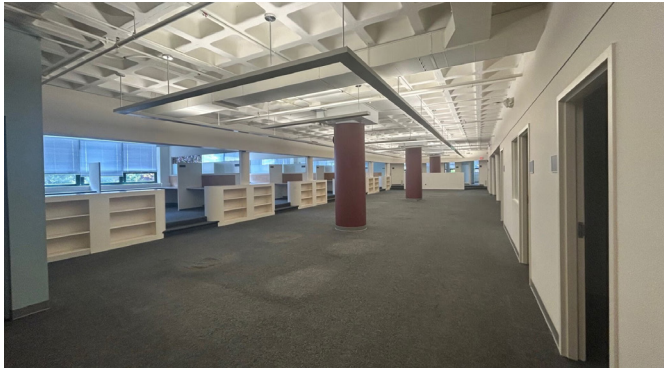


Break Room/ Kitchenette



8 Parking Spaces

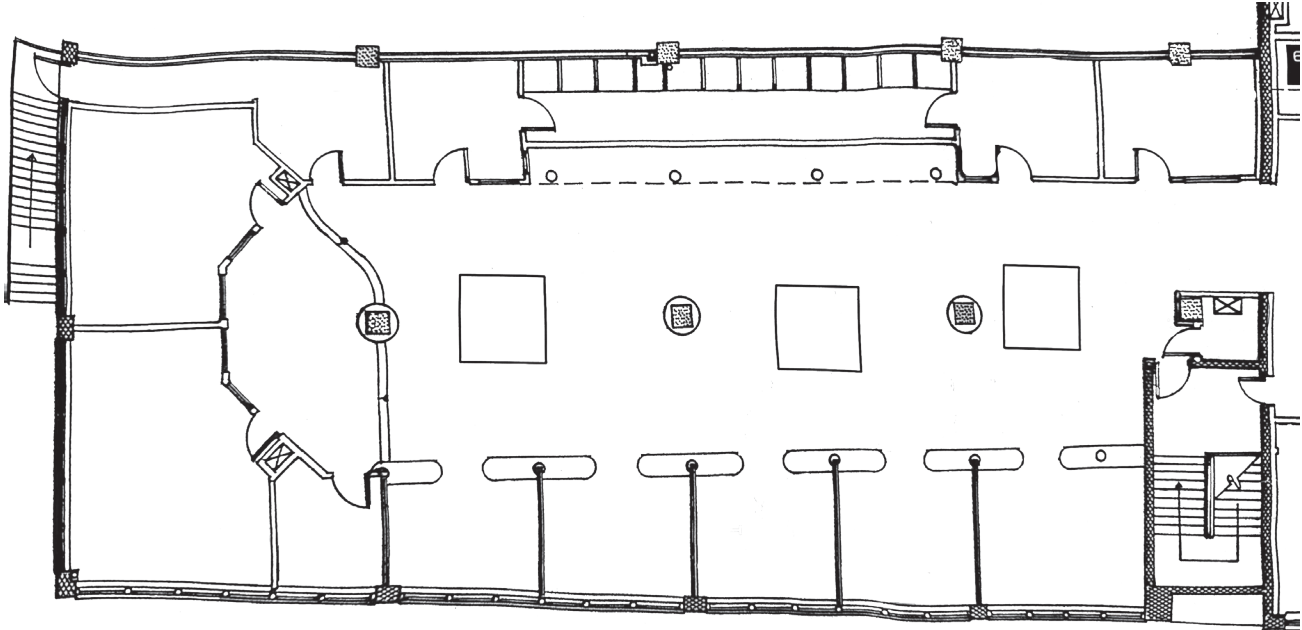
1035 Cambridge Street is a **modern office building** located in Inman Square with convenient access to Union Square, Central Square and Harvard Square. The building is a 5-minute walk to the new **Union Station Green line** stop and with access to several bus lines. Building occupants include technology, biotech, architecture, financial services, and non-profits.



All information furnished regarding property for sale, rental or financing is from sources deemed reliable, but no warranty or representation is made to the accuracy thereof and same is submitted to errors, omissions, change of price, rental or other conditions prior to sale, lease or financing or withdrawal without notice. No liability of any kind is to be imposed on the broker herein.

# 1035 CAMBRIDGE ST., SUITE 26

CAMBRIDGE, MA 02141



**STEPHANIE DEERING**

sdeering@lee-associates.com

C. 781.608.5964



All information furnished regarding property for sale, rental or financing is from sources deemed reliable, but no warranty or representation is made to the accuracy thereof and same is submitted to errors, omissions, change of price, rental or other conditions prior to sale, lease or financing or withdrawal without notice. No liability of any kind is to be imposed on the broker herein.