

# NEW TO MARKET



## FULLY FINISHED MEDICAL SPEC SUITE AVAILABLE NOW

- Newly renovated suite – Suite 505: 1,138 RSF
- High-end medical finishes
- Move-in ready
- Flexible lease term
- Short and simple lease form
- Great for sole practitioners

### Virtual Tour



## BUILDING HIGHLIGHTS

- Located next to Penn Medicine | Good Shepherd Rehabilitation Specialty Hospital
- Abundant parking surrounding the hospital
- Multi-tenant medical office building
- Beautiful open lobby
- Fully ADA accessible

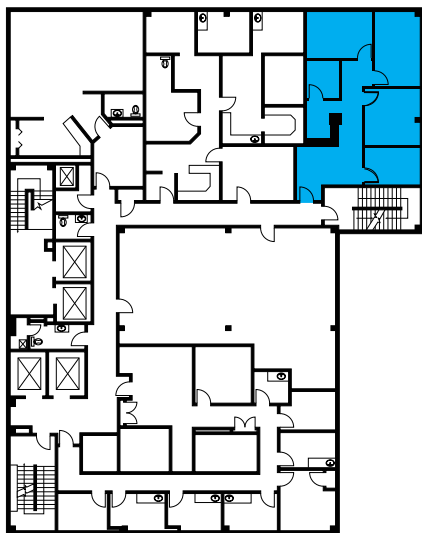


## LEASING INFORMATION

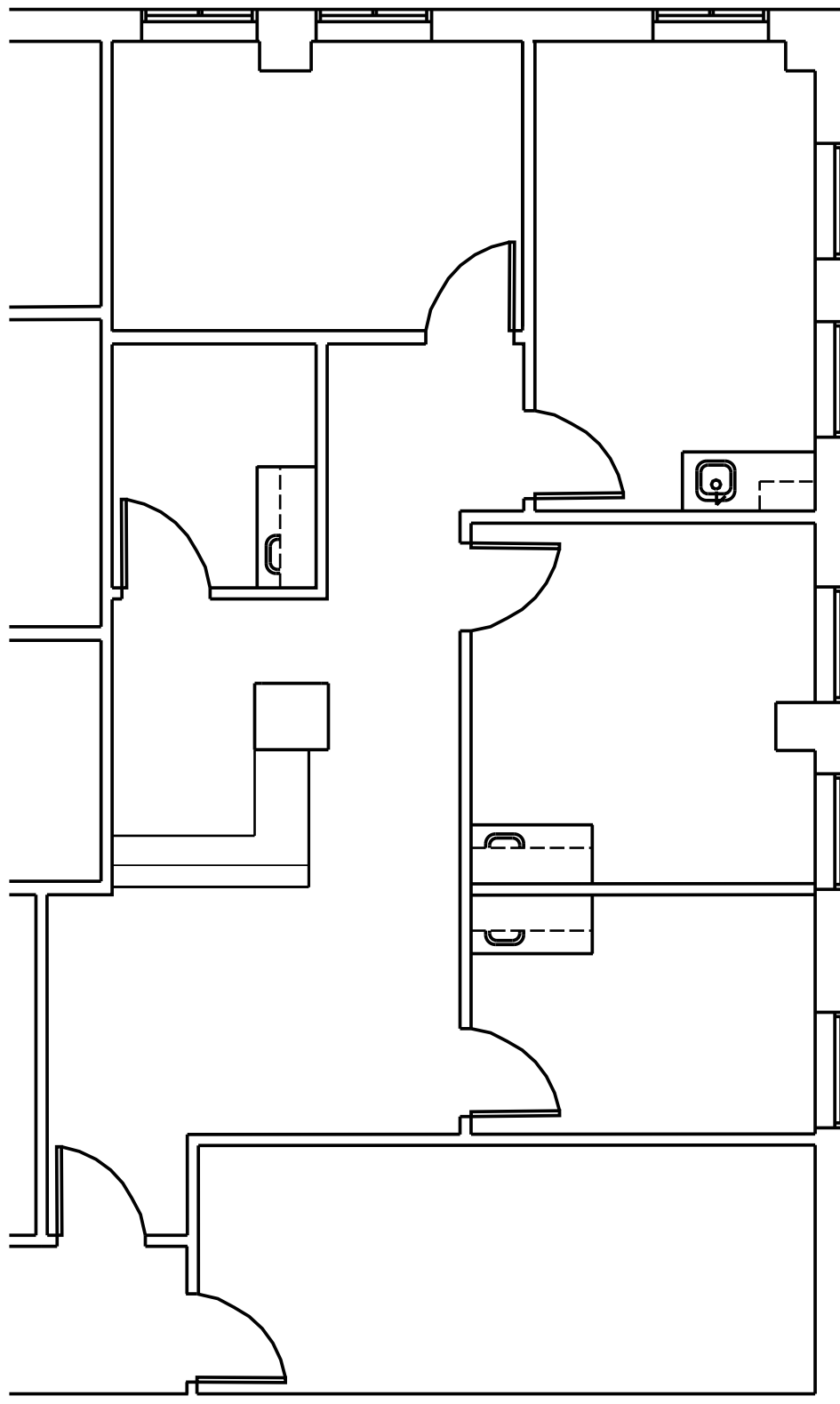
# 1740 South Street, Philadelphia, PA

Medical Office Space for Available for Lease

Suite 505: 1,138 RSF



Virtual Tour



Building owned and managed by  
**HEALTHCARE REALTY**



#### LEASING INFORMATION

Tom Hummel  
thummel@geisrealty.com  
215.568.2505

Dan Moller  
dmoller@geisrealty.com  
215.701.0722

# 1740 South Street, Philadelphia, PA

Medical Office Space for Available for Lease



Virtual Tour



Building owned and managed by  
**HEALTHCARE REALTY**

**NAI** Geis Realty  
Group, Inc.

## LEASING INFORMATION

Tom Hummel  
thummel@geisrealty.com  
215.568.2505

Dan Moller  
dmoller@geisrealty.com  
215.701.0722