



HIVE

OAKLAND



THE HIVE blends new and old to handcraft a style of its own. The brick and timber buildings have a timeless appeal while modern updates and fully sustainable building practices bring the style into aesthetic and ecological balance.

HIVE - With 100,000 SF of commercial and retail space and 104 apartments, the development is a space for local businesses, social entrepreneurs, and artists to converge—all in a supportive neighborhood.

RASA - Marking the southwest corner of the Hive District is Rasa, a highly amenitized apartment building consisting of 65 homes.

BROADWAY GRAND - At the southern end of the project is this mixed-use development featuring 132 condominiums and 20,000 SF of commercial space.



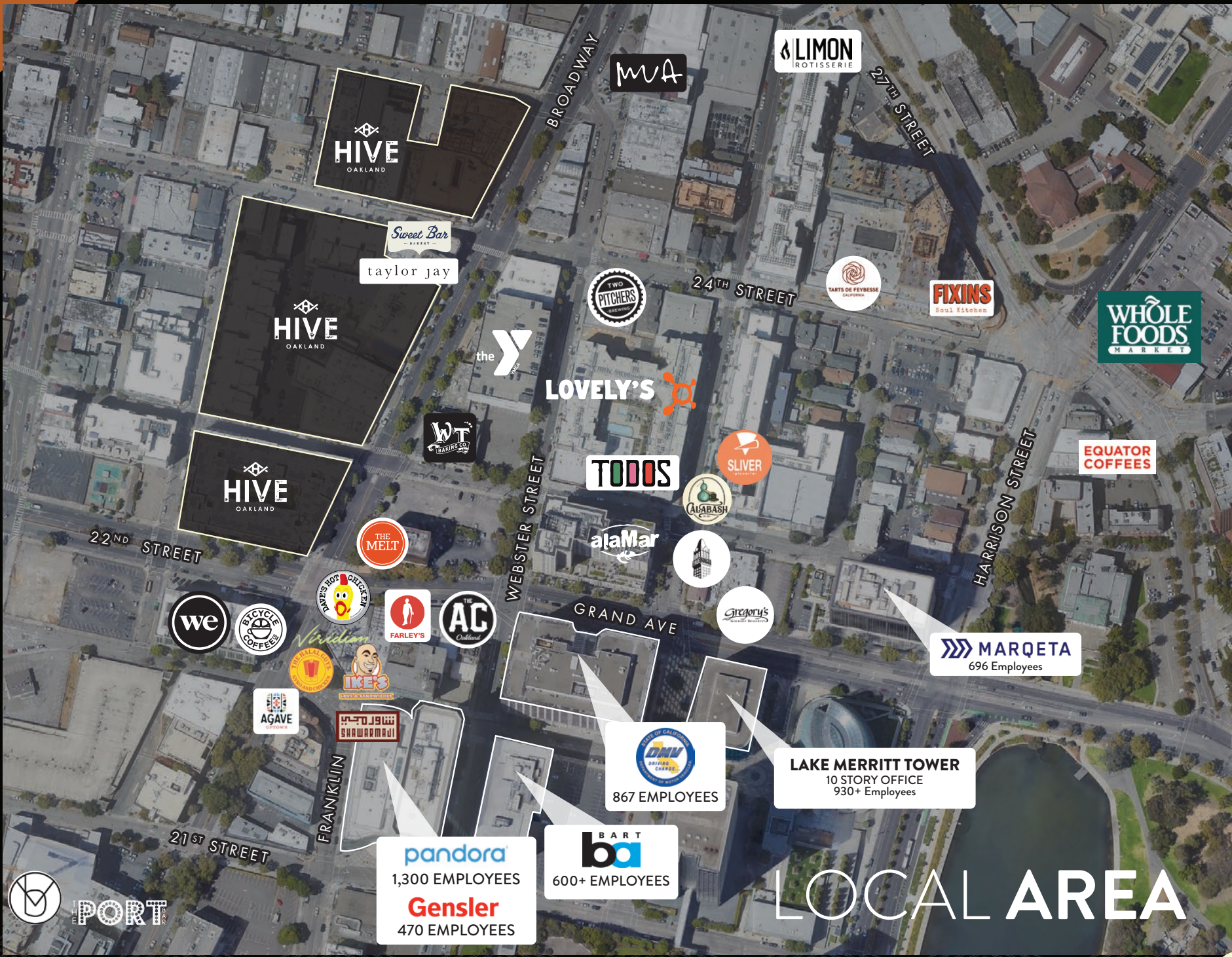
MODERN, HISTORIC, INDUSTRIAL



AN OAKLAND ORIGINAL

KISSEL - a 168-key boutique hotel in the heart of Uptown Oakland. Bold decor. Refreshing service. Diverse culinary options. Glamorous event venues. Kissel strikes the perfect balance between style and comfort, being the ideal place for locals to commune and travelers to get a genuine taste of The Town.

DENISON - Live brilliantly at Denizen, a boutique apartment building built to be a catalyst for creativity in the center of Uptown Oakland. Home to an eclectic mix of studios, one- and two-bedroom residences.



HIVE
OAKLAND

HIVE
OAKLAND

HIVE
OAKLAND

Sweet Bar
Bakery

taylor jay

the Y

LOVELY'S

WT
BAKING CO.

TODOS

ataMar

SLIVER

ALABASH

Gregory's

WHOLE
FOODS
MARKET

EQUATOR
COFFEES

22ND STREET

WEBSTER STREET

GRAND AVE

HARRISON STREET

we

BICYCLE
COFFEES

DAVID'S BOY
DELICATES

FARLEY'S

THE AC
Outboard

Verdell's

IKES
LOW-CARB SANDWICHES

AGAVE
UPDOWN

SHAWARMAJI

FRANKLIN

21ST STREET

867 EMPLOYEES

LAKE MERRITT TOWER
10 STORY OFFICE
930+ EMPLOYEES

MARQETA
696 EMPLOYEES

pandora
1,300 EMPLOYEES
Gensler
470 EMPLOYEES

BART
600+ EMPLOYEES

LOCAL AREA



THE PORT

maxwell



JOIN THE MIX



maxwell



AVAILABILITY

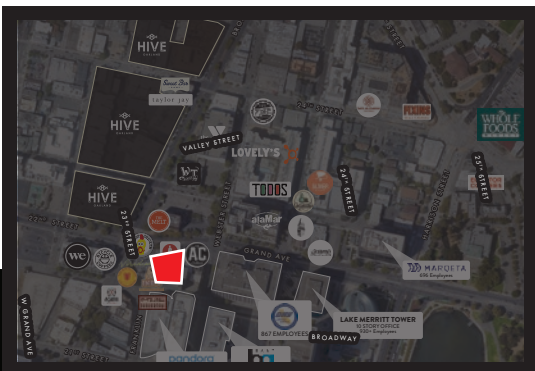
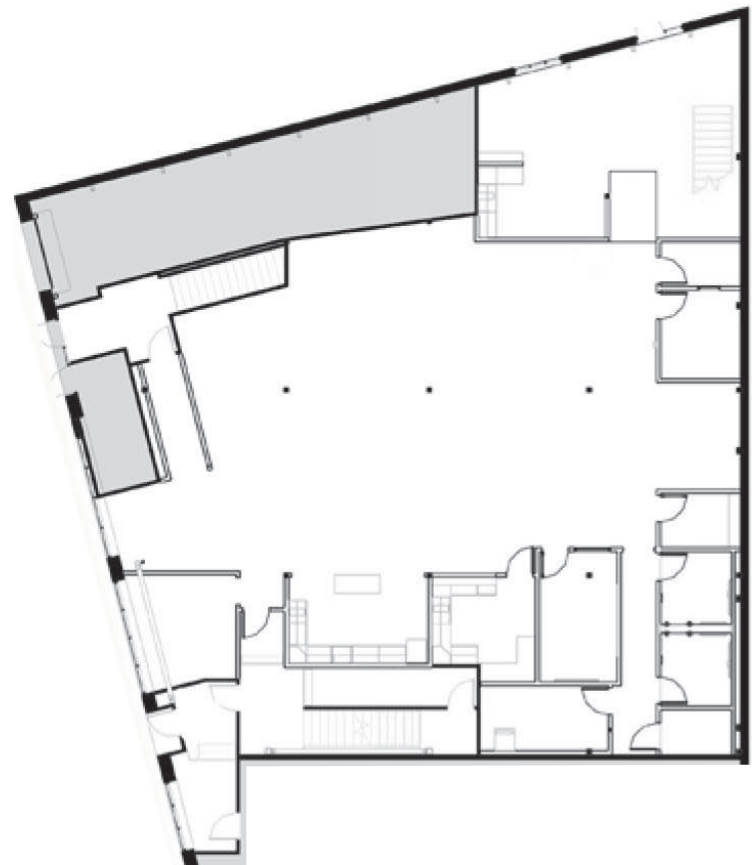


SPACE A

400 23rd Street, Oakland



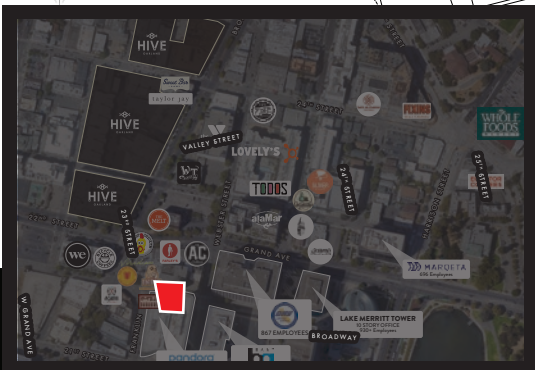
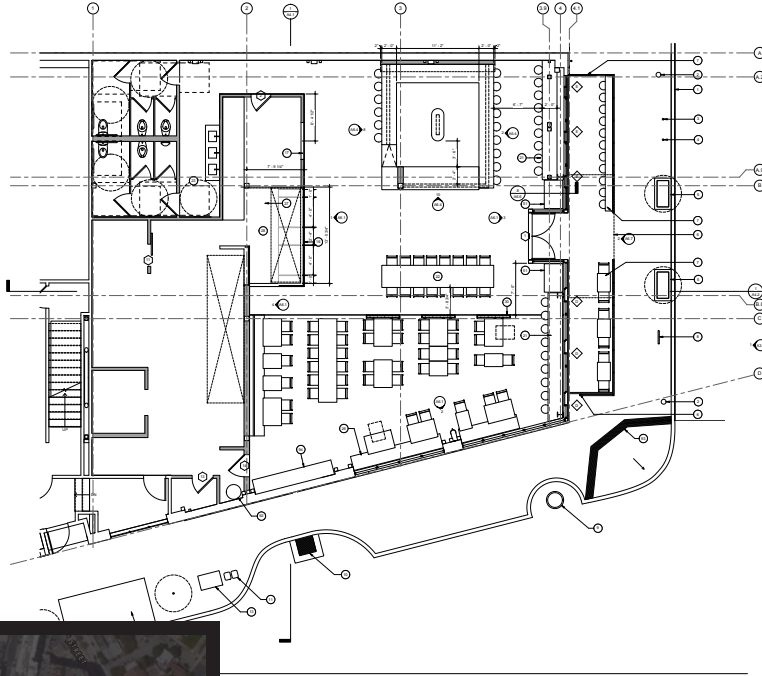
- 5,120 SF of Ground Floor Retail
(can be up to 13K with second floor and basement)
- Former NUMI Tea headquarters
- Exposed brick & timber building



SPACE B

2301 Broadway, Oakland

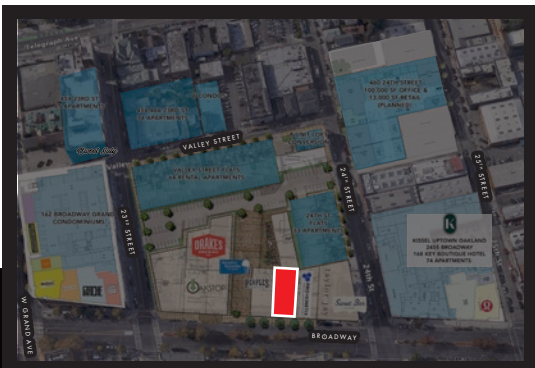
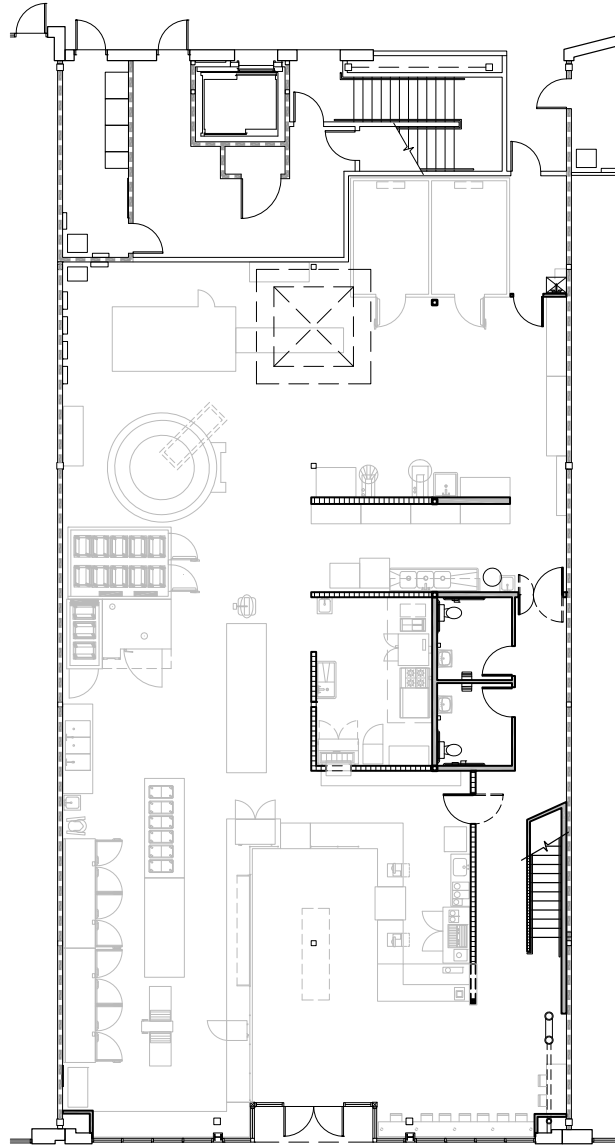
- 3,782 SF Turnkey Restaurant Space on highly desirable endcap, in the heart of Uptown
- Includes some FF&E, in “like new” condition
- Clean, modern build-out with recent upgrades
- High ceilings and windowline that wraps around Broadway and 23rd
- Unique exposed brick & timber building



SPACE C

2343 Broadway, Oakland

- 4,765 SF Turnkey Bakery Production Space and Retail Storefront
- Additional 853 SF "Bonus" Mezzanine
- High traffic location fronting Broadway
- Select FF&E remains in the space
- Open Floorplan with High Ceilings

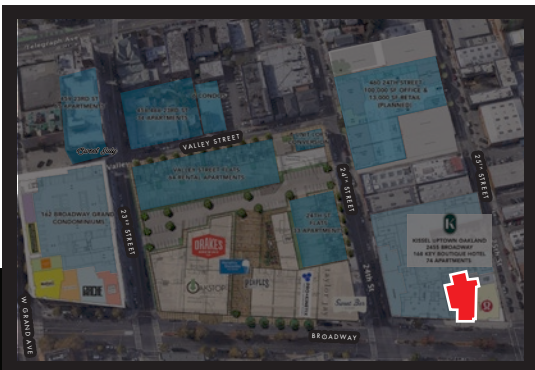
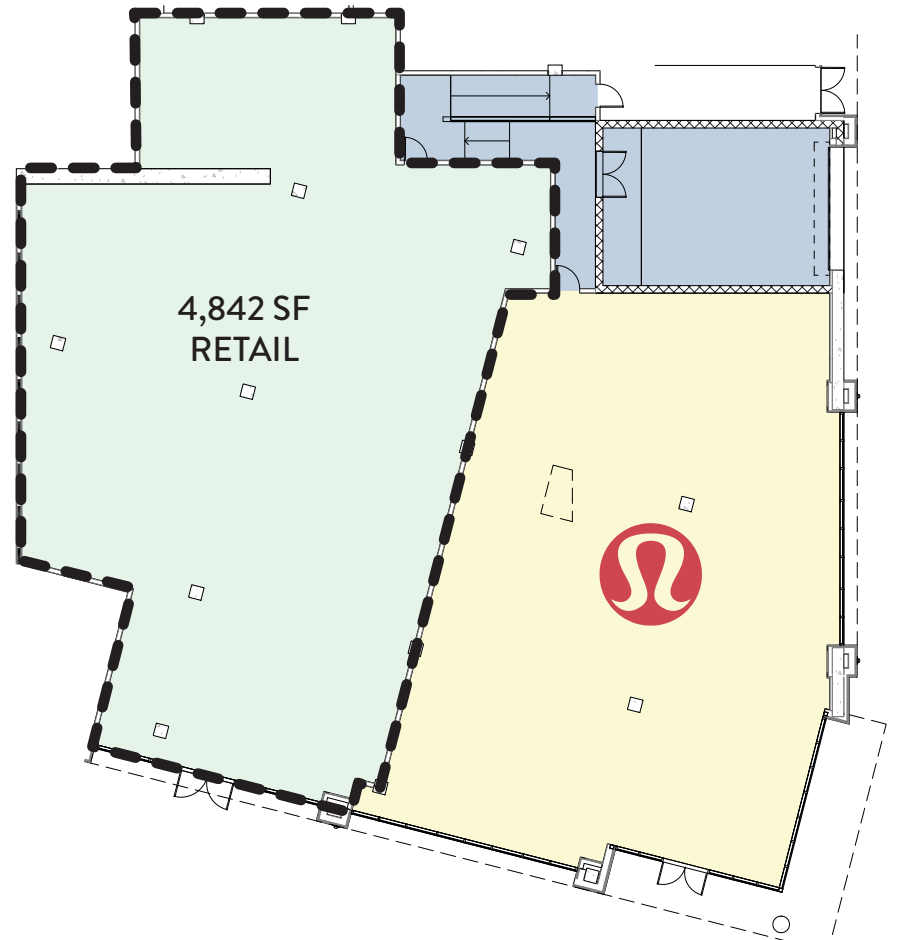


SPACED

2455 Broadway, Oakland



- 4,842 SF Ground Floor Retail adjacent to Lululemon
- Large, open floorplan with 20+- ceiling heights
- Loading capability along 25th Street via roll-up door
- Part of the newly constructed 168-key boutique hotel in the heart of Uptown, an extension of the highly successful Hive development

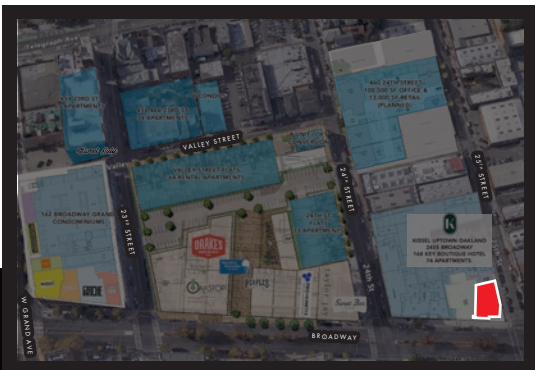
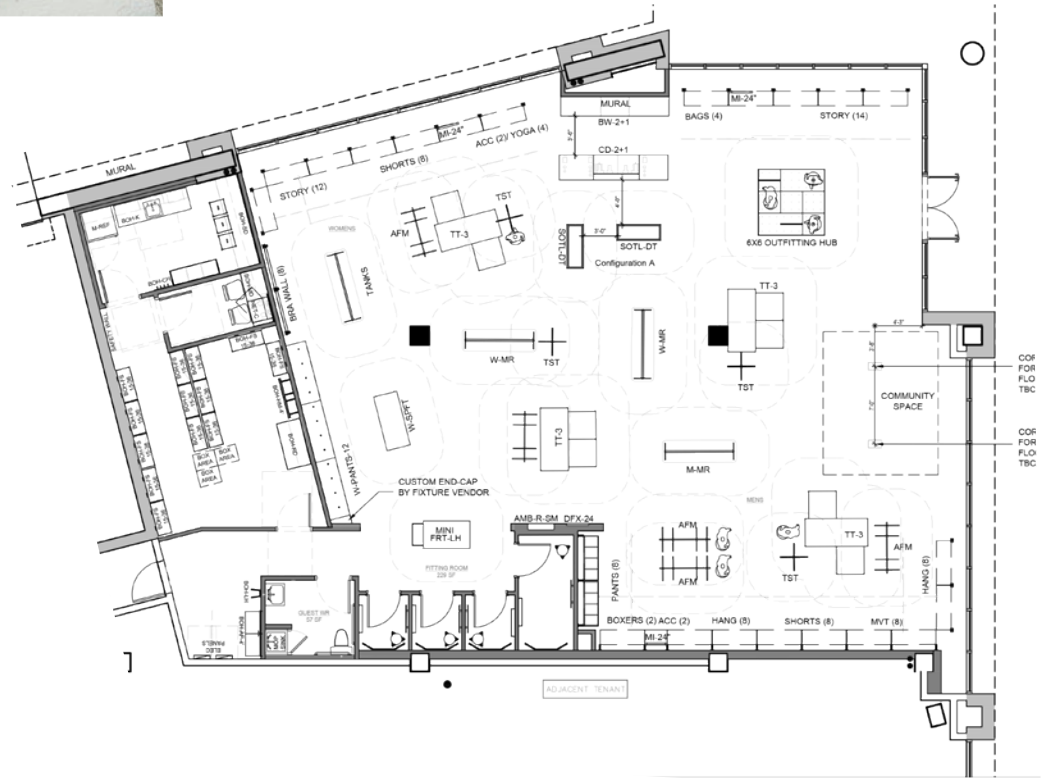


SPACE

2495 Broadway, Oakland



- 3,757 SF of Ground Floor Retail
- Former Lululemon Store
- Located at the ground floor of the Kissel Hotel
- Hard-corner of Broadway & 25th Street

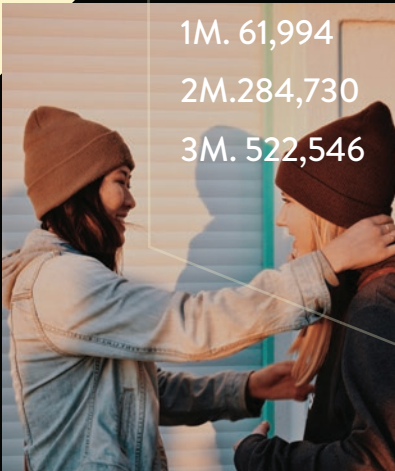


2024 DEMOGRAPHICS



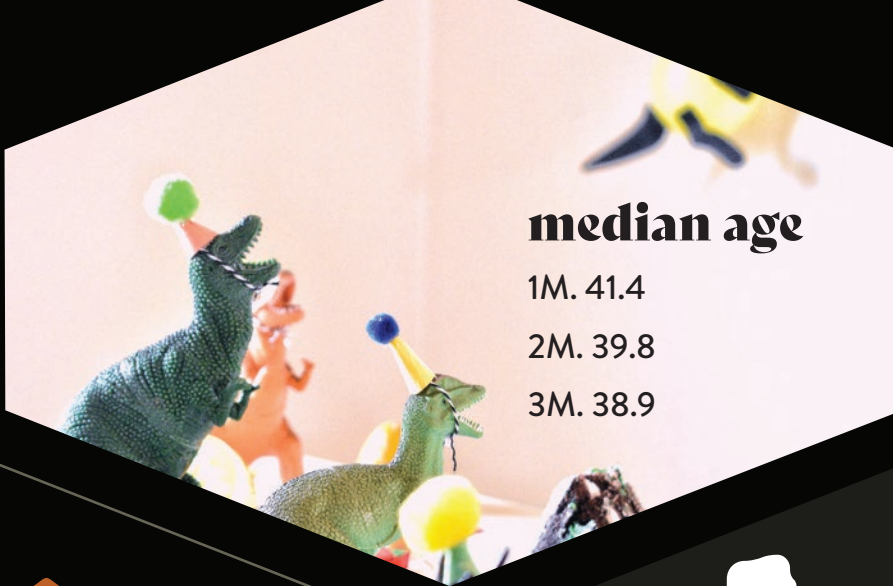
population

1M. 61,994
2M. 284,730
3M. 522,546



median age

1M. 41.4
2M. 39.8
3M. 38.9



1.81 **visit frequency**
(placer.ai)



employees

1M. 62,737
2M. 152,332
3M. 233,728



318.9K **annual visits**

(placer.ai)

average hh income

1M. \$115,075
2M. \$163,355
3M. \$165,933



LOCAL PARKING



Google Earth



HIVE

HILARY PARKER

925.324.2579

hparker@retailwestinc.com

DRE # 0176862

SAMI ZEGER

415.497.3106

sami@retailwestinc.com

DRE # 01911536

This information has been secured from sources we believe to be reliable, but we make no representations, or warranties, express or implied, as to the accuracy of the information. Listing broker has been given enough information to provide only preliminary due diligence on the. The materials are not to be considered fact. The information contained herein is not a substitute for a thorough due diligence investigation. Information to be verified by an interested party; and their advisors and consultants. By receiving these materials you are agreeing to the disclaimers set forth herein. DRE# 01445169 | Retail West © 2025

retailwest