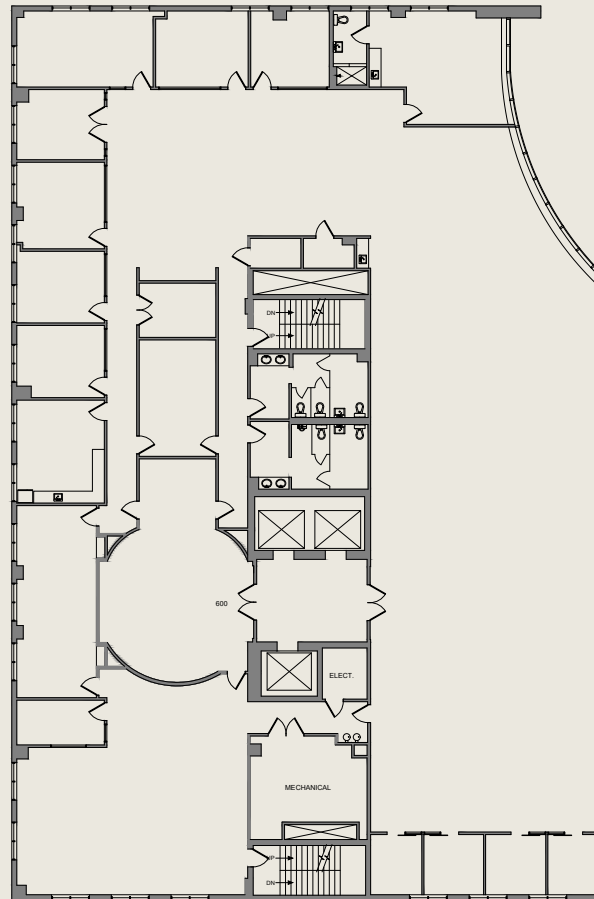


Bldg 925
South Federal Hwy



6TH FLOOR

Available:

FULL FLOOR: 13,902 SF

For more information contact:

John Criddle

Executive Vice President

+1 561 283 5176

john.criddle@cbre.com

Joe Freitas

Senior Vice President

+1 561 512 8844

joe.freitas@cbre.com

Maxwell Pawk

Vice President

+1 561 393 1670

max.pawk@cbre.com

Nicholas Mulligan

Associate

+1 561 393 1680

nicholas.mulligan@cbre.com

IPCapital
PARTNERS, LLC

CBRE