

FOR LEASE
±659 SF
OF OFFICE SPACE
AVAILABLE



PROPERTY FEATURES

- Multi - Tenant Office Property in the Highly Desirable Scripps Ranch Submarket
- Building Size: ±17,966 SF
- Built in 1980
- Two (2) Floors
- Great Access to I-15 Freeway
- Janitorial Included



Josh West, SIOR
Sr. Vice President - Partner
direct (858) 458-3358
Jwest@voitco.com
Lic. 01923375

Brian Mulvaney, SIOR, CCIM
Sr. Vice President - Partner
direct (858) 458-3372
Bmulvaney@voitco.com
Lic. 00938944

Voit
REAL ESTATE SERVICES

FOR LEASE

±659 SF
OF OFFICE SPACE
AVAILABLE

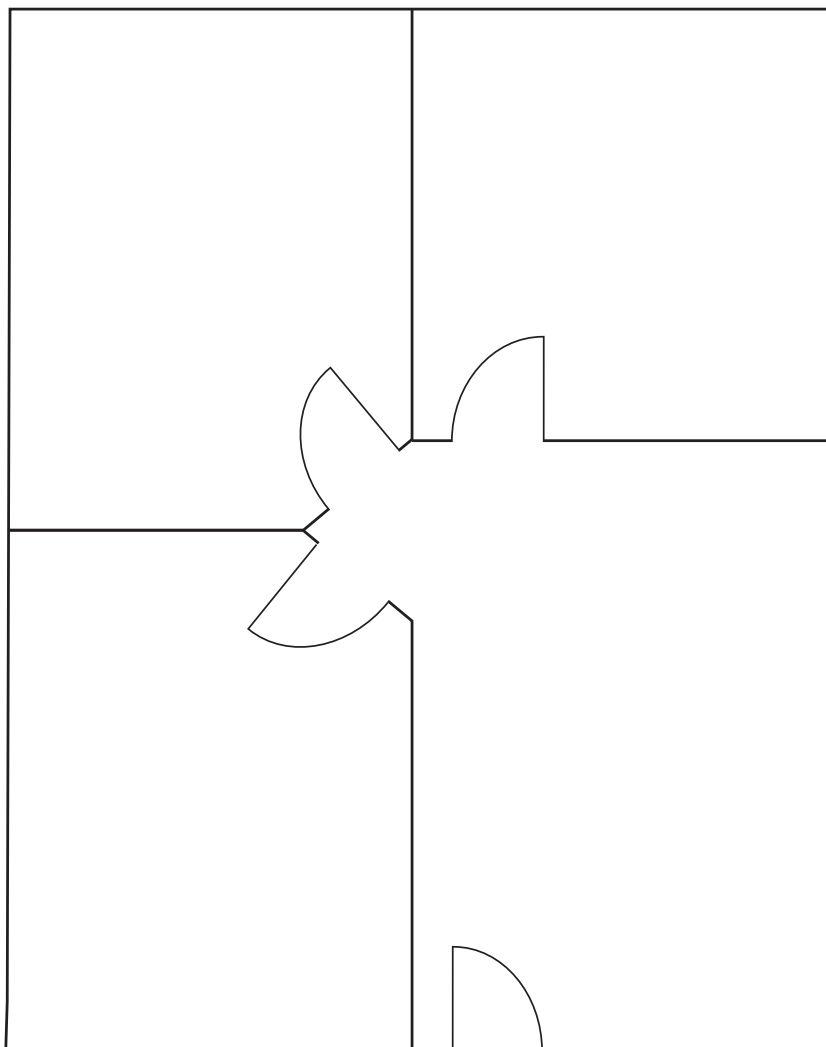
SUITE: 202

SIZE: ±659 SF

RATE: \$2.25 PSF + E

AVAILABLE: 6/1/2026

(POTENTIALLY SOONER)



Josh West, SIOR
Sr. Vice President - Partner
direct (858) 458-3358
Jwest@voitco.com
Lic. 01923375

Brian Mulvaney, SIOR, CCIM
Sr. Vice President - Partner
direct (858) 458-3372
Bmulvaney@voitco.com
Lic. 00938944

Voit
REAL ESTATE SERVICES