

NEW PUBLIX SHOPPING CENTER



Outparcel 1

HARBOR ISLE

- 266 Single Family Homes
- +/- 650 New Residents
- Homes starting at \$500K

Outparcel 2

BRIDGE MARKETPLACE

STATE RD 510 & US-1, VERO BEACH, FL 32967

SCAN TO VIEW LISTING

LAND

SCAN TO VIEW LISTING

RETAIL

EXCLUSIVE
RETAIL LEASING:

Alfredo Sanchez
Director
(561) 301-7690
alfredo.sanchez@landmarkcra.com

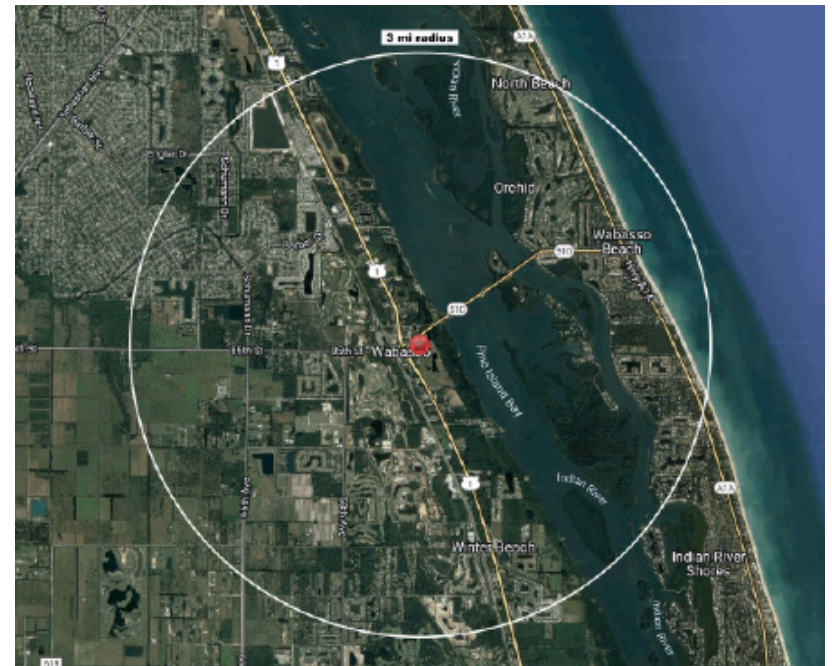
Don DeWoody
Principal
(561) 729-7000
don.dewoody@landmarkcra.com

Guy Quattlebaum
Sales Associate
(561) 818-2102
guy.quattlebaum@landmarkcra.com

HIGHLIGHTS

- New Publix Shopping Center
- Delivery Date: 4th Quarter 2024
- Retail Pads Available
- Build to Suit opportunities considered
- Inline shop space adjacent to Publix available
- Great Demographics

OFFERING SUMMARY	
Outparcel 1	0.84 AC
Outparcel 2	0.42 AC
Inline Retail Space	1,500 - 6,400 SF



DEMOGRAPHICS (3 mi)



Population
14,202



Daytime Population
4,238



Average HH Income
\$88,883



Median Age
58



Landmark

P.O. Box 1625, West Palm Beach, FL 33402
(561) 729-7000
www.LandmarkCRA.com

Alfredo Sanchez

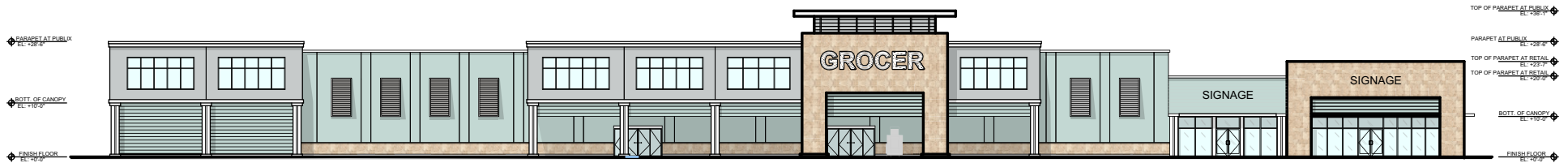
Director
(561) 301-7690
alfredo.sanchez@landmarkcra.com

Don DeWoody

Principal
(561) 729-7000
don.dewoody@landmarkcra.com

Guy Quattlebaum

Sales Associate
(561) 818-2102
guy.quattlebaum@landmarkcra.com



04 OVERALL - NORTH EAST ELEVATION

SCALE: 1/8" = 1'-0"





Landmark

P.O. Box 1625, West Palm Beach, FL 33402
(561) 729-7000
www.LandmarkCRA.com

Alfredo Sanchez

Director
(561) 301-7690
alfredo.sanchez@landmarkcra.com

Don DeWoody

Principal
(561) 729-7000
don.dewoody@landmarkcra.com

Guy Quattlebaum

Sales Associate
(561) 818-2102
guy.quattlebaum@landmarkcra.com

