

# BRIDGEWATER CORPORATE CENTER

11325 Random Hills Road | Fairfax, VA 22030

## Office For Lease

895 - 26,210 SF



Leasing Information:  
703.522.4600

**Doug McLearn**    **Eamon McCrann**  
703.284.5862      703.284.5861  
dmclearn@lpc.com    emccrann@lpc.com

# Lincoln

1530 Wilson Boulevard  
Suite 200  
Arlington, VA 22209

[www.lpc.com](http://www.lpc.com)

# BRIDGEWATER CORPORATE CENTER

11325 Random Hills Road | Fairfax, VA 22030

**Office Available**  
895 - 26,210 SF



Availabilities	SF	Lease Rate	Date Available
Suite 110	3,385 SF	\$33.00 FS	Immediately
Suite 200	7,224 SF	\$33.00 FS	Immediately
Suite 300	6,460 SF	\$33.00 FS	Immediately
Suite 401	2,283 SF	\$33.00 FS	Immediately
Suite 500	26,210 SF	\$33.00 FS	Immediately
Suite 725	895 SF	\$33.00 FS	Immediately

## Property Highlights

- Class A office building that overlooks lake with outdoor seating areas
- Building signage available for a large user
- Located in Fairfax Center with easy access to I-66 and Route 50
- 3-story covered executive parking available
- On-site deli & Bank, with other retail & hotels across the street
- Efficient floor-to-window ratio
- Tenant-only fitness center with locker room
- 9' finished ceilings
- LEED Gold Certified

**Doug McLearn**   **Eamon McCrann**

703.284.5862

703.284.5861

dmclearn@lpc.com

emccrann@lpc.com

**Lincoln**

# BRIDGEWATER CORPORATE CENTER

11325 Random Hills Road | Fairfax, VA 22030

1st Floor  
3,385 SF



Suite	Size	Description
Suite 110	3,385 SF	Available Immediately

**Doug McLearn**    **Eamon McCrann**  
703.284.5862    703.284.5861  
dmclearn@lpc.com    emccrann@lpc.com

## Lincoln

# BRIDGEWATER CORPORATE CENTER

11325 Random Hills Road | Fairfax, VA 22030

2nd Floor

7,224 SF



Suite 200

Suite	Size	Description
■ Suite 200	7,224 SF	Available Immediately

**Doug McLearn**   **Eamon McCrann**

703.284.5862

703.284.5861

dmclearn@lpc.com

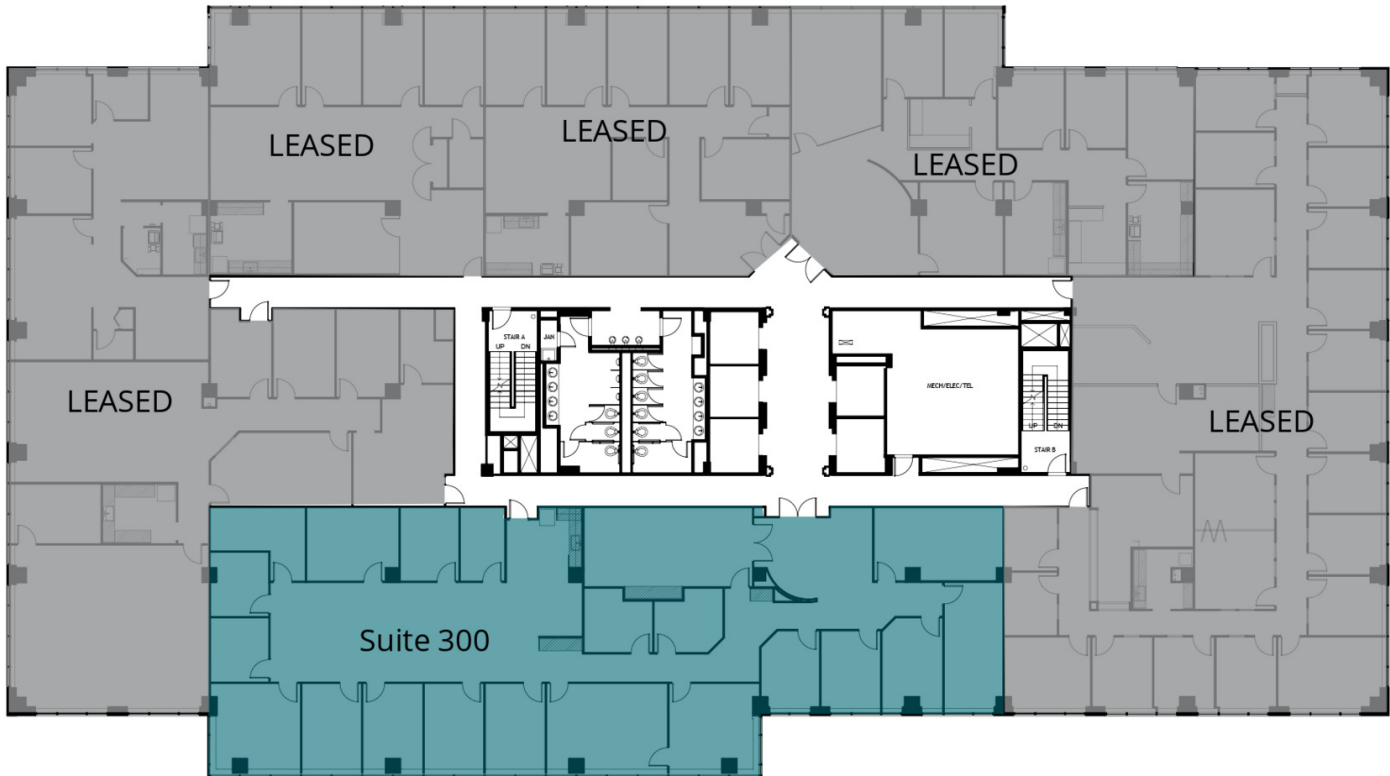
emccrann@lpc.com

**Lincoln**

# BRIDGEWATER CORPORATE CENTER

11325 Random Hills Road | Fairfax, VA 22030

3rd Floor  
6,460 SF



Suite	Size	Description
■ Suite 300	6,460 SF	Available Immediately

**Doug McLearn**    **Eamon McCrann**  
703.284.5862    703.284.5861  
dmclearn@lpc.com    emccrann@lpc.com

## Lincoln

# BRIDGEWATER CORPORATE CENTER

11325 Random Hills Road | Fairfax, VA 22030

4th Floor  
2,283 SF



Suite	Size	Description	Virtual Tour
■ Suite 401	2,283 SF	Available Immediately	

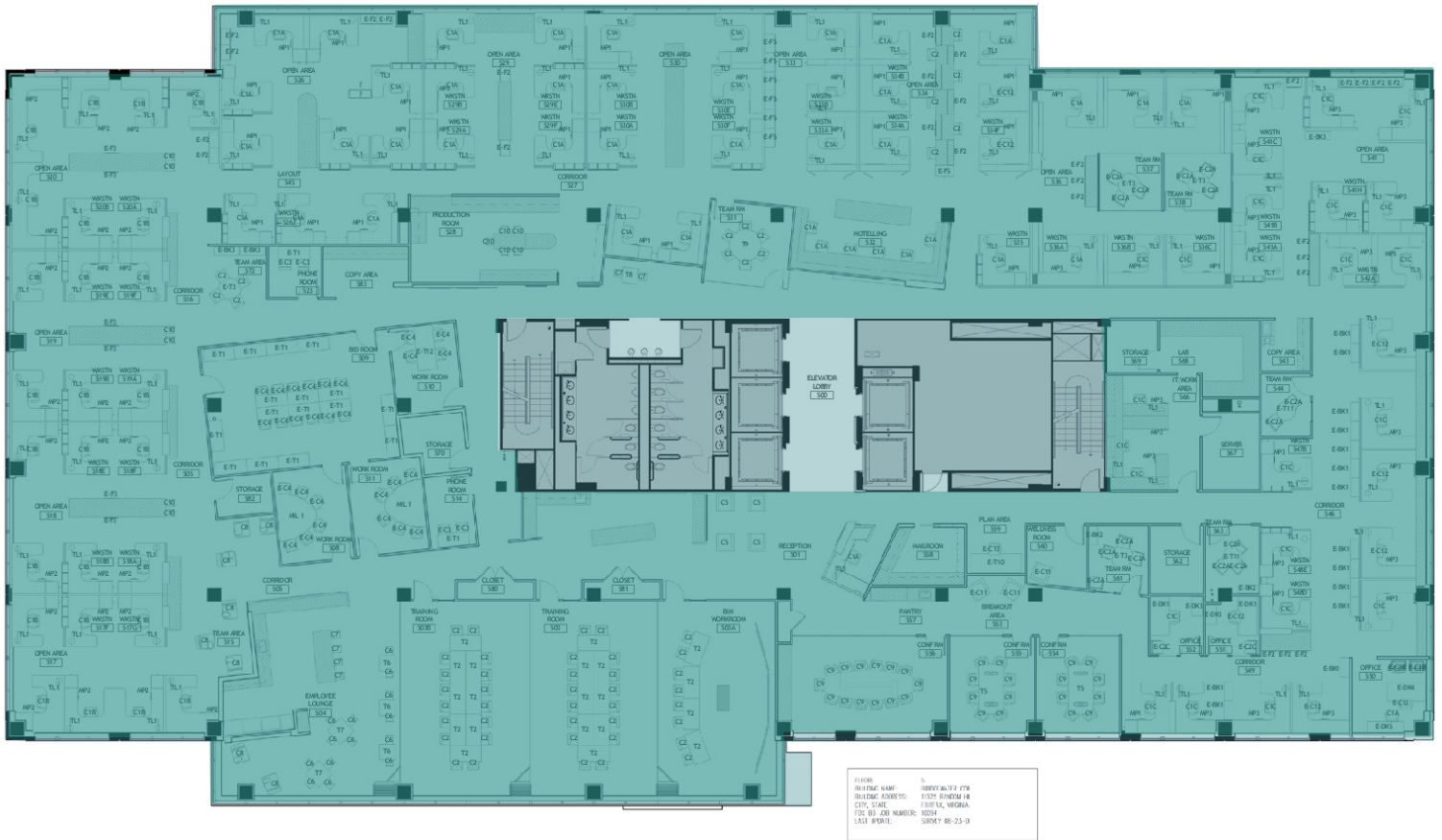
**Doug McLearn**   **Eamon McCrann**  
703.284.5862   703.284.5861  
dmclearn@lpc.com   emccrann@lpc.com

## Lincoln

# BRIDGEWATER CORPORATE CENTER

11325 Random Hills Road | Fairfax, VA 22030

**5th Floor**  
**26,210 SF**



Suite	Size	Description	Virtual Tour
■ Suite 500	26,210 SF	Full Floor with Large Conference Center & Exposed Ceilings	<a href="#">View Here</a>

**Doug McLearn**    **Eamon McCrann**  
703.284.5862      703.284.5861  
dmclearn@lpc.com    emccrann@lpc.com

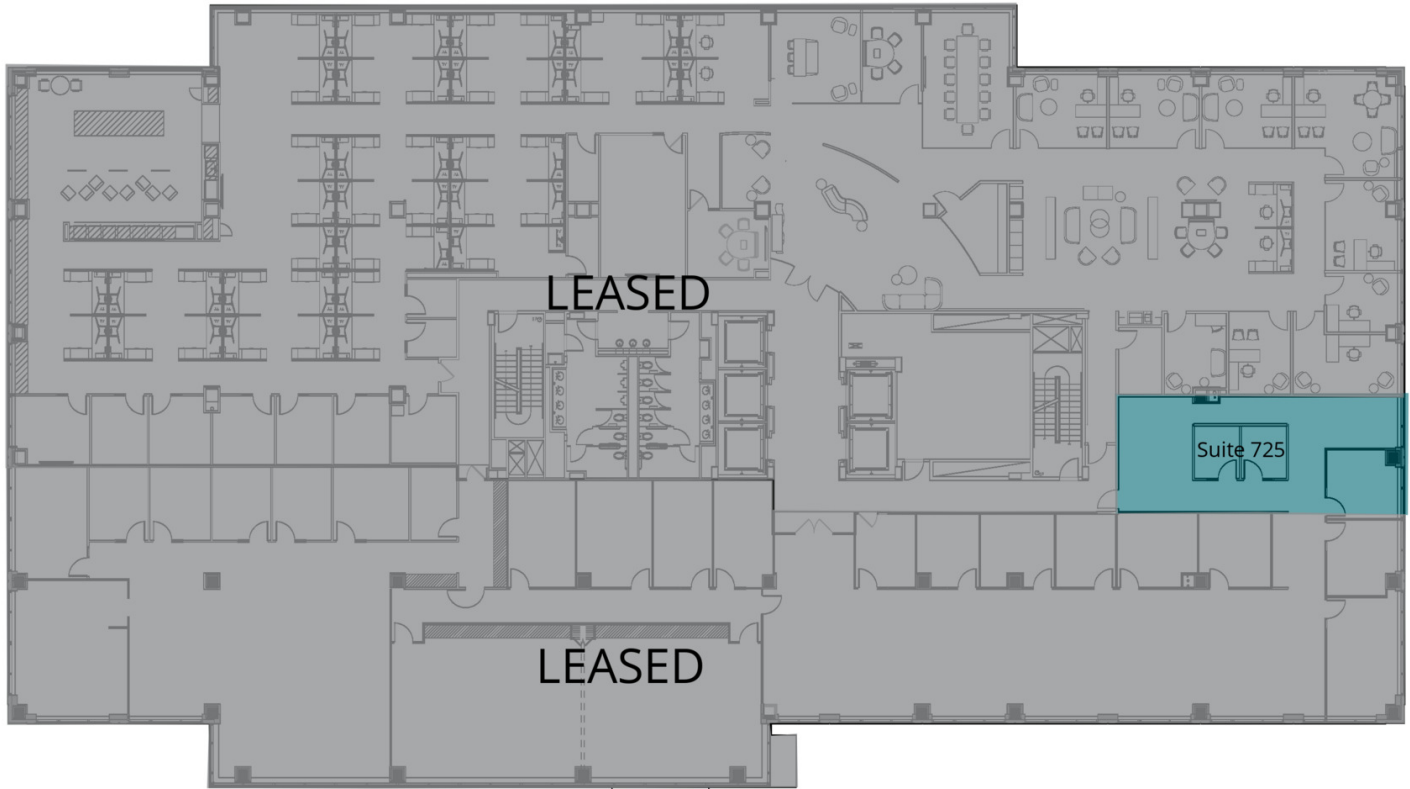
**Lincoln**

# BRIDGEWATER CORPORATE CENTER

11325 Random Hills Road | Fairfax, VA 22030

7th Floor

895 SF



Suite	Size	Description
■ Suite 725	895 SF	Available Immediately

**Doug McLearn**   **Eamon McCrann**

703.284.5862

703.284.5861

dmclearn@lpc.com

emccrann@lpc.com

# Lincoln

# BRIDGEWATER CORPORATE CENTER

11325 Random Hills Road | Fairfax, VA 22030

## Nearby Amenities



Map  
data  
©2026  
Google

Doug McLearn Eamon McCrann

703.284.5862

703.284.5861

dmclearn@lpc.com

emccrann@lpc.com

# Lincoln



# BRIDGEWATER CORPORATE CENTER

11325 Random Hills Road | Fairfax, VA 22030

Leasing Information:  
703.522.4600

**Doug McLearn**  
703.284.5862  
dmclearn@lpc.com

**Eamon McCrann**  
703.284.5861  
emccrann@lpc.com

## Lincoln

1530 Wilson Boulevard  
Suite 200  
Arlington, VA 22209

[www.lpc.com](http://www.lpc.com)