

# Because every working day matters

**Marylebone** | 4 Devonshire Street, London W1W 5DX

**LANDMARK**  
flexible workspace

the space



Marylebone is a contemporary office building with excellent commuter access.

The fully serviced and furnished offices would suit any business.

There are spacious break-out areas allowing you to network as never before, as well as a professionally trained on-site team to handle your every need.



# Welcome to Marylebone

*“I’m Radwan, your Client Experience Manager at Marylebone. We can’t wait to welcome you to our beautiful offices, meeting rooms, and flexible workspace at this convenient location. All the team are excited about helping your business make the most of our organised and productive workspace. Welcome to Landmark.”*

[View the virtual tour](#)

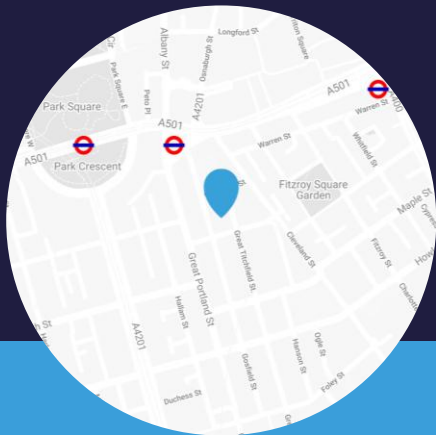
*“A great building located in a fantastic spot with 5-10 minutes' walk to several tube stations, close to Regent's Park for that lovely lunchtime stroll or a quick run, and lots of cafes/shops nearby to suit every taste.”*

**Nadia Bolgarova, Landmark client at Marylebone**





**Marylebone**  
**is one of**  
**37 prime**  
**locations**  
**across**  
**London and**  
**the UK.**



4 Devonshire Street,  
 London W1W 5DX

  
**Shower**  
 facilities

  
**Regent's Park**  
 3 minutes' walk

  
**Great Portland Street**  
 3 minutes' walk

  
**Bond Street**  
 13 minutes' walk

  
**King's Cross**  
 10 minutes' walk



# LANDMARK

flexible workspace

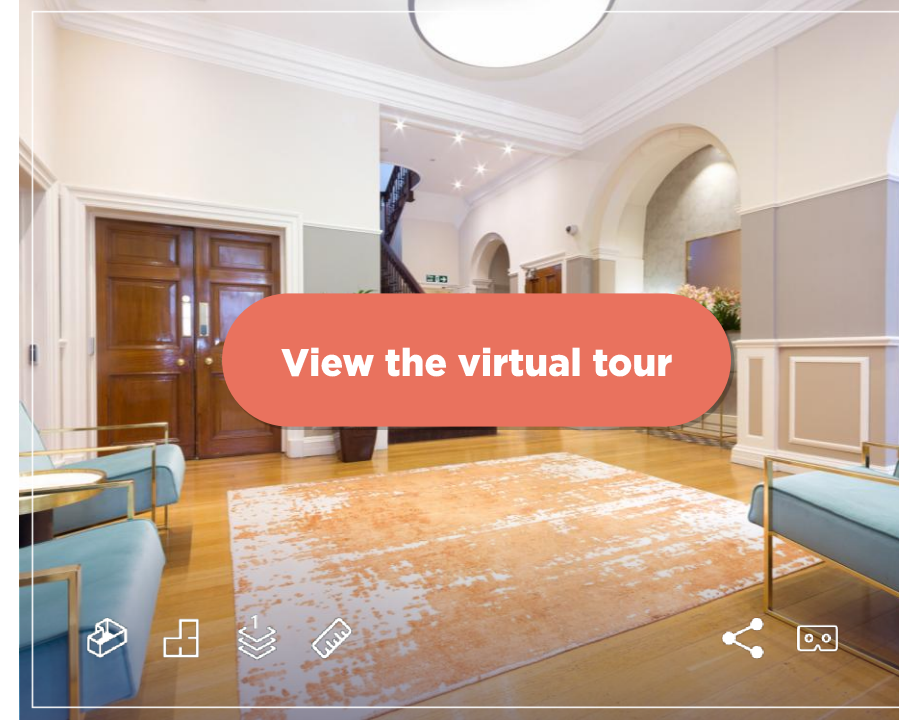
## Devonshire Street Ground Floor



**Indicative floor plans**

These are your first impressions of our refurbished workspaces in a characterful Georgian building in Marylebone, one of central London's most delightful neighbourhoods. It is also one of the best connected for transport.

Landmark's inviting offices at Devonshire Street are located towards the eastern end of Marylebone's conservation area. The western part of Marylebone includes pretty Marylebone Village, with the southern area bordering the retail sector on Oxford Street. The northern tip encompasses Regent's Park, Bakers Street and Marylebone Road.



[View the virtual tour](#)

# LANDMARK

flexible workspace

# Devonshire Street

# First Floor



**Indicative floor plans**

# LANDMARK

flexible workspace

# Devonshire Street Second Floor



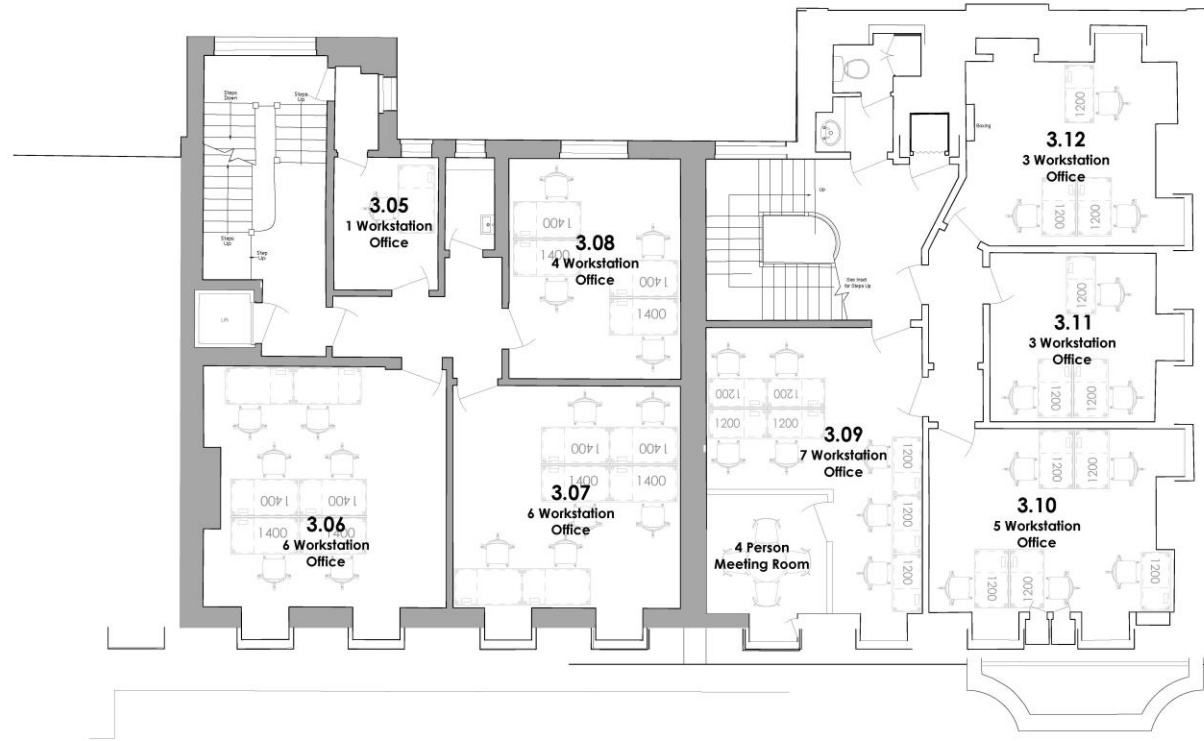
**Indicative floor plans**

# LANDMARK

flexible workspace

## Devonshire Street

Third Floor



**Indicative floor plans**

# LANDMARK

flexible workspace

## Devonshire Street

### Fourth Floor



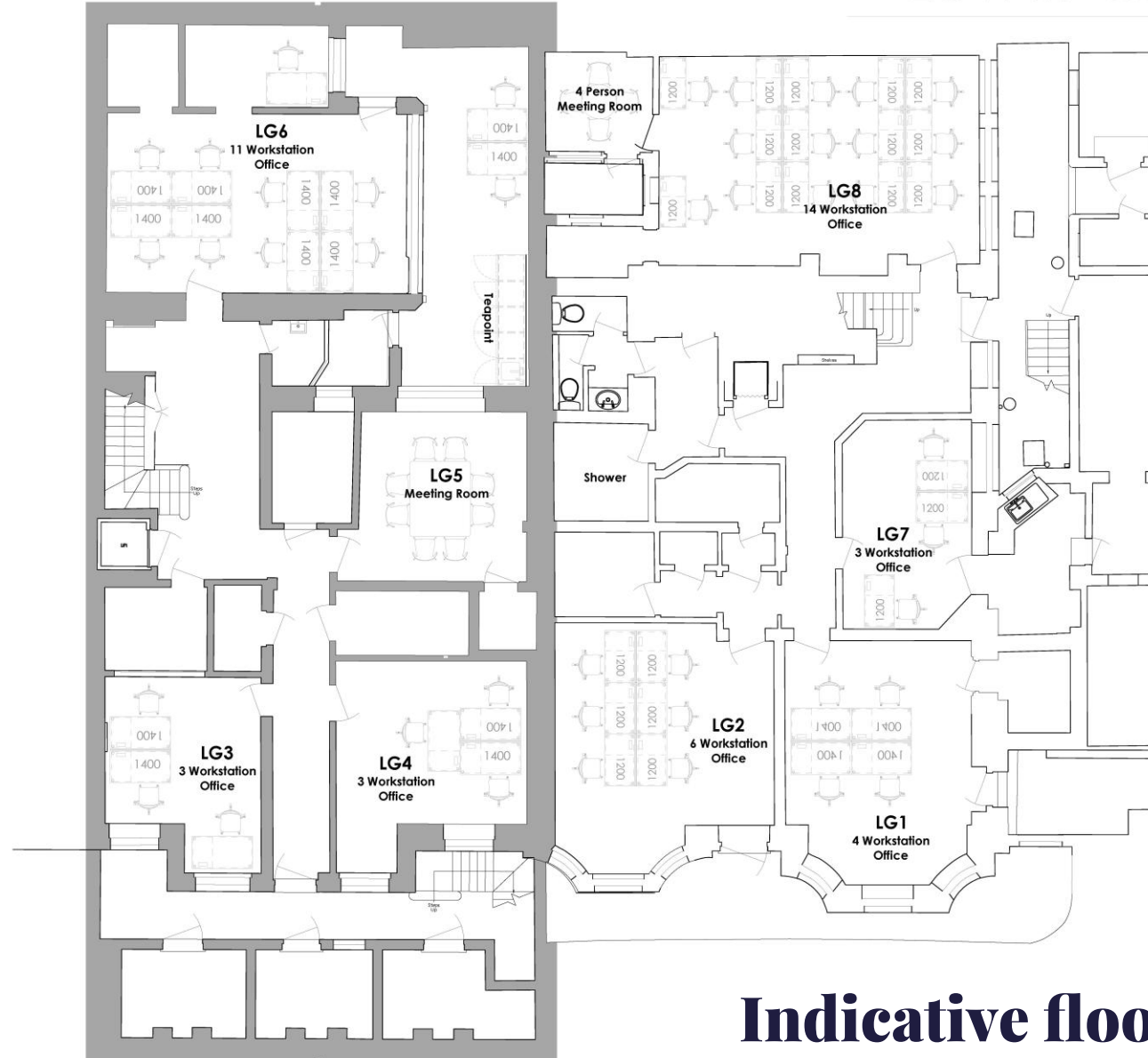
**Indicative floor plans**

# LANDMARK

flexible workspace

## Devonshire Street

## Lower Ground Floor



**Indicative floor plans**





## Get in touch

Mariarita Milazzo

Area General Manager

+44 (0) 2034 405 000

[enquiries@landmarkspace.co.uk](mailto:enquiries@landmarkspace.co.uk)

[landmarkspace.co.uk](http://landmarkspace.co.uk)