

680 8TH STREET

SHOWPLACE SQUARE / DESIGN DISTRICT



CREATIVE SHOWROOM & RETAIL SPACE FOR LEASE

PLEASE CONTACT FOR MORE INFORMATION:

JAY D. SHAFFER
(415) 407-3997
jshaffer@coltoncommercialsf.com
License #: 01444640



BRYAN B. COLTON
(415) 595-6959
bryancolton@coltoncommercialsf.com
License #: 02111407



STREET VIEW



PARKING



LOBBY



LOBBY

680 8TH STREET

COLTON
COMMERCIAL
PARTNERS

JAY D. SHAFFER | 415.407.3997
jshaffer@coltoncommercialsf.com
License #: 01444640

BRYAN B. COLTON | 415.595.6959
bryancolton@coltoncommercialsf.com
License #: 02111407



PROPERTY HIGHLIGHTS

HEART OF DESIGN DISTRICT LOCATION

FULL HVAC

ONSITE PARKING

ONSITE BUILDING MANAGEMENT

LOADING DOCKS

AVAILABLE NOW:

SUITE 160

SIZE: 2,144 RSF +/-

RATE: \$24.00 MG

Ground floor show room / retail space

Large open area

High ceilings

Back office and storage area

Full HVAC

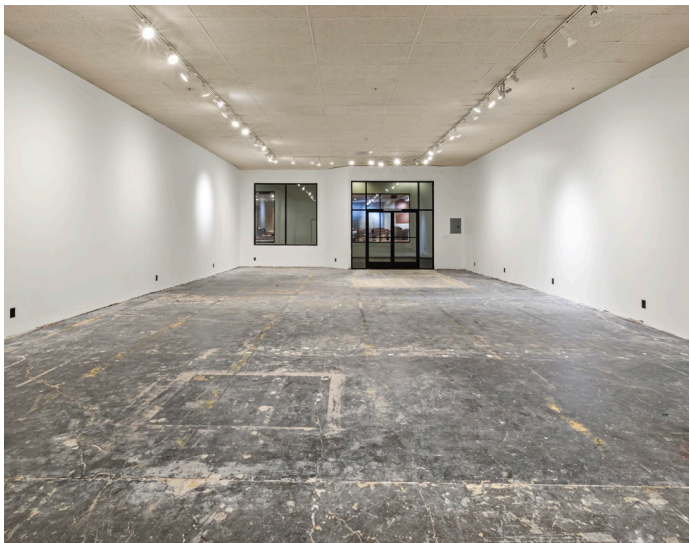
680 8TH STREET



JAY D. SHAFFER | 415.407.3997
jshaffer@coltoncommercialsf.com
License #: 01444640

BRYAN B. COLTON | 415.595.6959
bryancolton@coltoncommercialsf.com
License #: 02111407

SUITE 160 PHOTOS



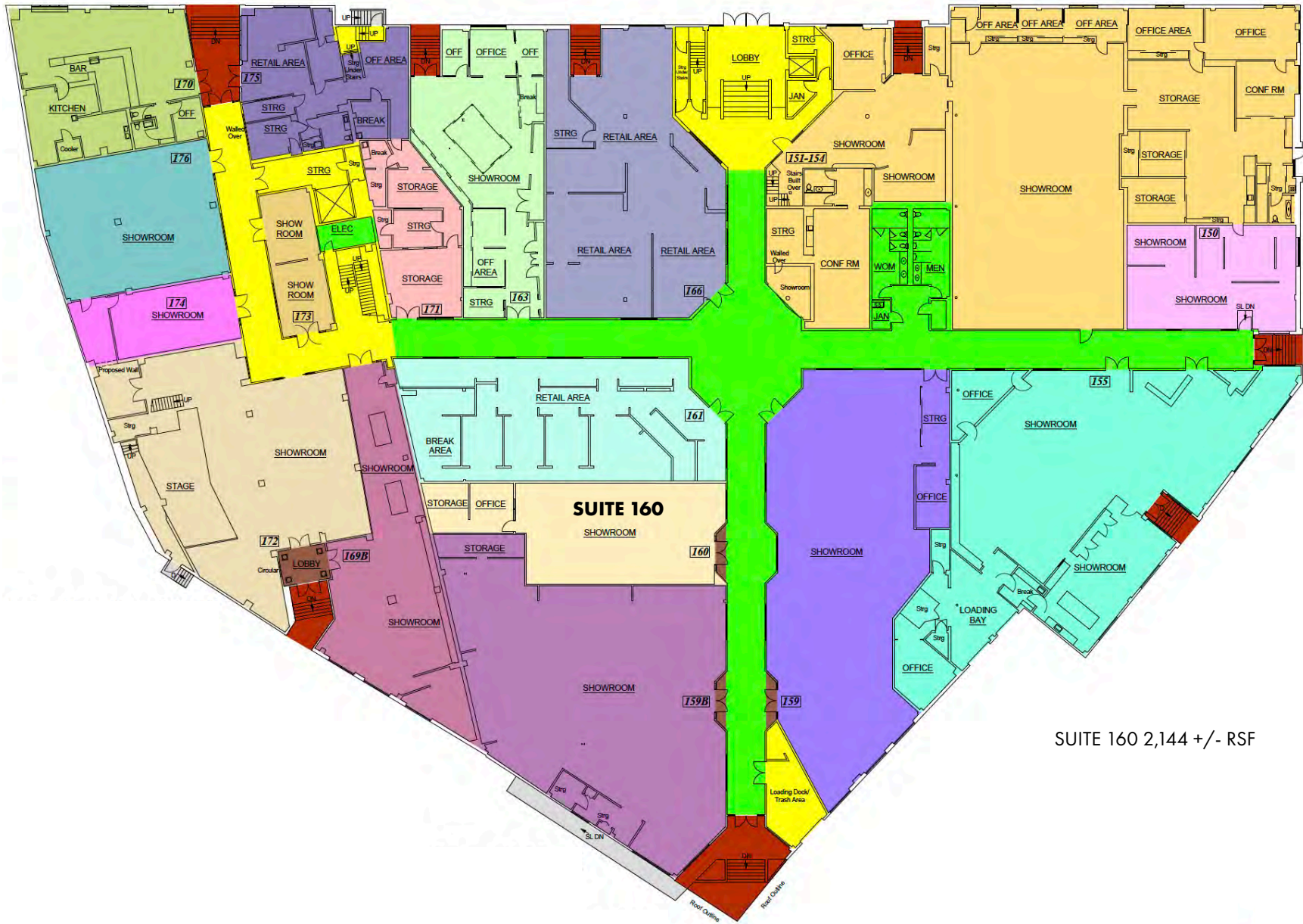
680 8TH STREET



JAY D. SHAFFER | 415.407.3997
jshaffer@coltoncommercialsf.com
License #: 01444640

BRYAN B. COLTON | 415.595.6959
bryancolton@coltoncommercialsf.com
License #: 02111407

1ST FLOOR PLAN



SUITE 160 2,144 +/- RSF

NEIGHBORHOOD MAP

RESTAURANTS

- Okane
- Omakase
- Starbucks
- Niku Steakhouse
- Dumpling Time Design District
- Hello Banh Mi
- New Burma
- Okane

