

NEWPORT PLAZA

RETAIL SPACE FOR LEASE

26900 NEWPORT ROAD | MENIFEE, CA



NEWPORT PLAZA

RETAIL SPACE FOR LEASE
26900 NEWPORT ROAD
MENEFEE, CA

Nick Earle
nearle@catalystretail.com
DRE# 01916982

Nick Corbell
ncorbell@catalystretail.com
DRE# 01932821

Daniel Watson
dwatson@catalystretail.com
DRE# 02165277



(951) 395-0000

www.catalystretail.com



41391 Kalmia St, Suite 230
Murrieta, CA 92562

No warranty or representation has been made to the accuracy of the foregoing information. Terms of sale or lease and availability are subject to change or withdrawal without notice



PROPERTY FEATURES

- RETAIL SPACES AVAILABLE ON BUSY NEWPORT RD. RETAIL CORRIDOR IN THE HEART OF MENEFEE
- FAST GROWING AREA WITH SIGNIFICANT RETAIL AND RESIDENTIAL DEVELOPMENT BOTH PLANNED AND UNDER CONSTRUCTION
- JOIN SHERWIN-WILLIAMS, PIT STOP PUB, BIG BRAND TIRE, MAGIC BROW AND LITTLE CAESAR'S
- HIGH DAY AND NIGHT TRAFFIC COUNTS
- CLOSE & EASY ACCESS TO I-215

TRAFFIC COUNTS

±43,129 CPD
Newport Rd and Bradley Rd

*Source: Regis Online

AVAILABILITY	
SUITE	TENANT
101	Sports Bar
103	Sports Bar
104/105	Veterinarian
106/107/108	Pediatric Partners
109/110	Chiropractor
111	±1,403 SF AVAILABLE
112	Italian Restaurant
113	±1,200 SF AVAILABLE Built Out Barber Shop
114	Donut Shop
116	Mexican Food Restaurant
117/118	Mexican Food Restaurant
119	Smoke Shop
120	Nail Salon
121	±1,200 SF AVAILABLE
122	Magic Brow
123	Little Ceaser's Pizza
124/125	Himalayan Taste

NEWPORT PLAZA

RETAIL SPACE FOR LEASE
26900 NEWPORT ROAD
MENIFEE, CA

Nick Earle
nearle@catalystretail.com
DRE# 01916982

Nick Corbell
ncorbell@catalystretail.com
DRE# 01932821

Daniel Watson
dwatson@catalystretail.com
DRE# 02165277



CATALYST
RETAIL

(951) 395-0000

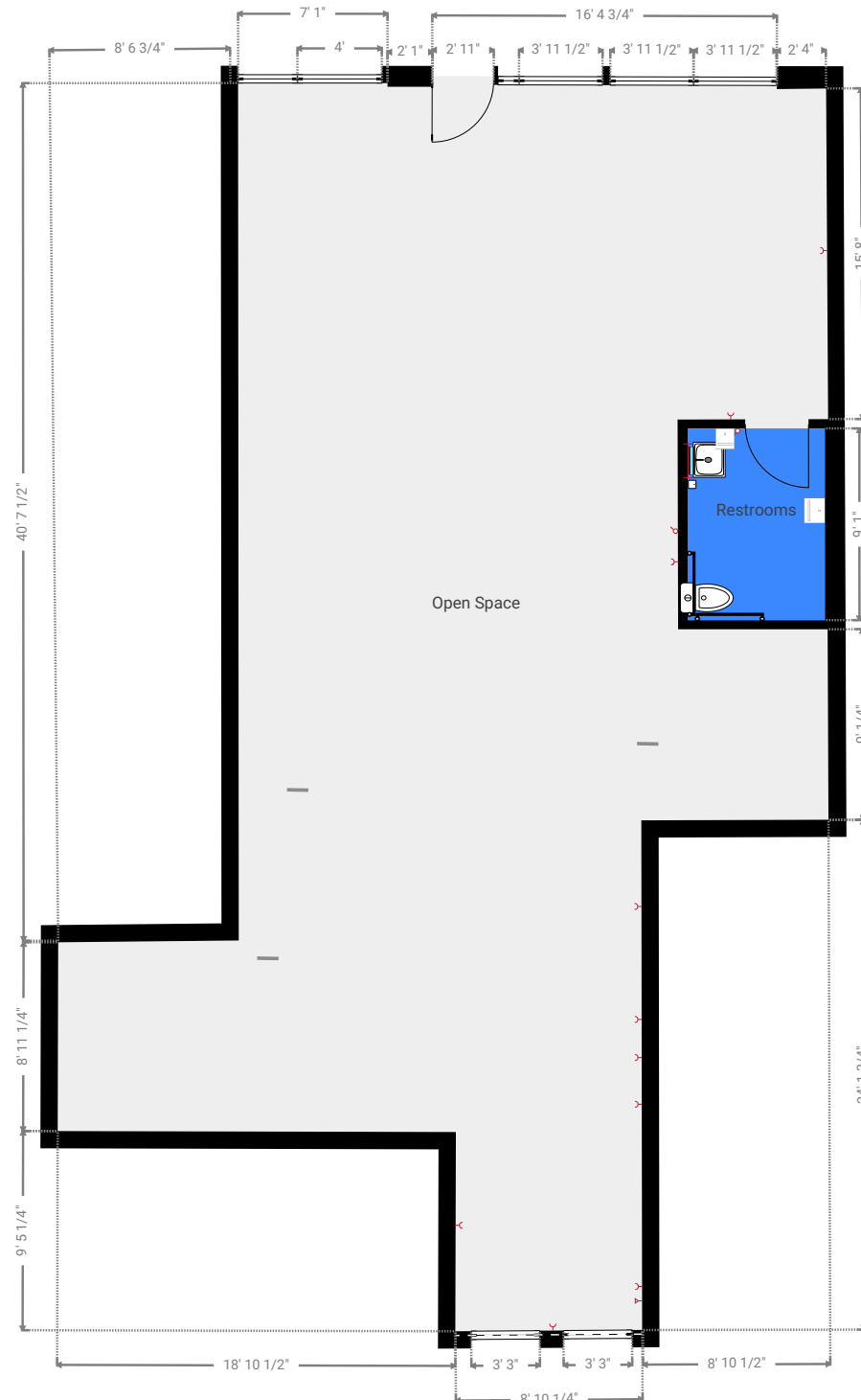
www.catalystretail.com



41391 Kalmia St, Suite 230
Murrieta, CA 92562

No warranty or representation has been made to the accuracy of the foregoing information. Terms of sale or lease and availability are subject to change or withdrawal without notice

SUITE 111 FLOOR PLAN



NEWPORT PLAZA

RETAIL SPACE FOR LEASE
26900 NEWPORT ROAD
MENEFEE, CA

Nick Earle

nearle@catalystretail.com
DRE# 01916982

Nick Corbell

ncorbell@catalystretail.com
DRE# 01932821

Daniel Watson

dwatson@catalystretail.com
DRE# 02165277



CATALYST
RETAIL

 (951) 395-0000

 www.catalystretail.com



41391 Kalmia St, Suite 230
Murrieta, CA 92562

No warranty or representation has been made to the accuracy of the foregoing information. Terms of sale or lease and availability are subject to change or withdrawal without notice



NEWPORT PLAZA

RETAIL SPACE FOR LEASE
26900 NEWPORT ROAD
MENIFEE, CA

Nick Earle
nearle@catalystretail.com
DRE# 01916982

Nick Corbell
ncorbell@catalystretail.com
DRE# 01932821

Daniel Watson
dwatson@catalystretail.com
DRE# 02165277



(951) 395-0000

www.catalystretail.com



41391 Kalmia St, Suite 230
Murrieta, CA 92562

No warranty or representation has been made to the accuracy of the foregoing information. Terms of sale or lease and availability are subject to change or withdrawal without notice



Original
YELLOW BASKET
Applebee's
T-Mobile
TEXAS
FIVE GUYS
BURGERS and FRIES

Ralphs
LIVING SPACES
DOLLAR TREE
ROSS
DRESS FOR LESS

ALDI
DAISO
Pollo loco
PET SMART
SONIC
America's Drive-In
BUFFALO WILD WINGS
B. GOLF & PUB. & C.

TARGET CENTER
BEST BUY
Michael's
KOHL'S
LOWE'S
IN-N-OUT
HomeGoods

LA FITNESS
Barons market
Cane's
CHICKEN FINGERZ

NEWPORT PLAZA
AVAILABLE FOR LEASE
2600 NEWPORT ROAD
MENIFEE, CA

DEMOGRAPHICS	1 Mile	3 Mile	5 Mile
POPULATION	15,263	87,759	159,819
AVERAGE HOUSEHOLD INCOME	\$117,656	\$114,364	\$124,786
GRADUATE DEGREE OR HIGHER	6.6%	8.5%	8.4%
TOTAL EMPLOYEES	8,513	38,669	66,763