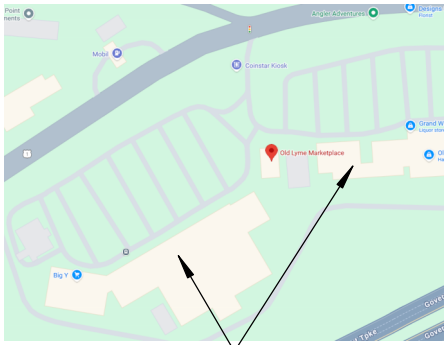


4 EXISTING STOREFRONT
SCALE: N.T.S.

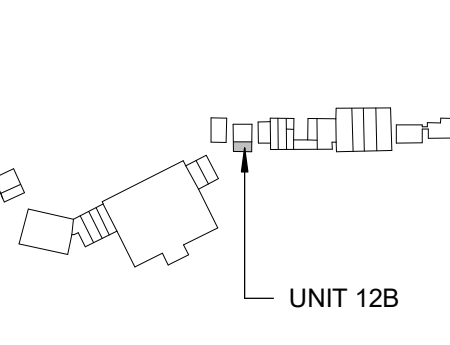


3 VICINITY PLAN
SCALE: N.T.S.



OLD LYME MARKETPLACE

2 KEY PLAN
SCALE: N.T.S.



UNIT 12B

LOD Submittal Review

- Approved
- Approved As Corrected
- Rejected
- Revise And Resubmit

THE BASE BUILDING INFORMATION DEPICTED ON THIS DRAWING IS PRELIMINARY AND SUBJECT TO CHANGE. ALL FINAL INFORMATION, DIMENSIONS, UTILITY LOCATIONS, ACTUAL FIELD CONDITIONS, ETC., MUST BE FIELD VERIFIED BY TENANT PRIOR TO THE DEVELOPMENT AND COMPLETION OF THE TENANT FIT-OUT DRAWINGS.

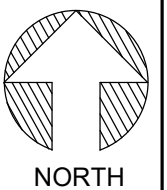
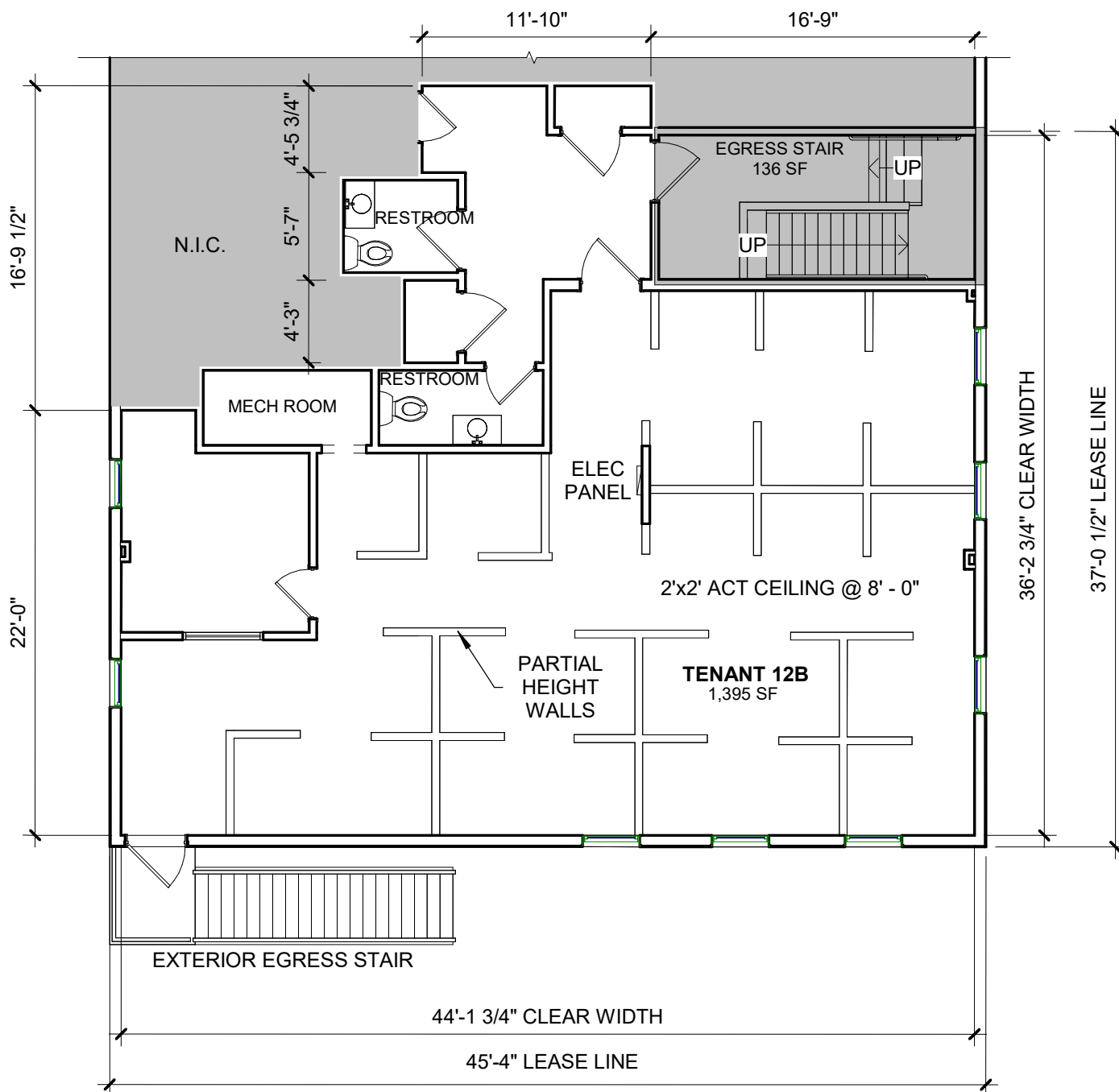
By: _____

Date: _____

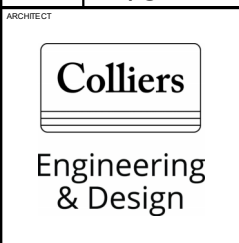
REV	DATE	COMMENTS

PRELIMINARY DRAWING
SUBJECT TO FIELD VERIFICATION

- ALL DIMENSIONS ARE SUBJECT TO FIELD VERIFICATION.



1 UNIT 12B LOD PLAN (SECOND FLOOR)
1/8" = 1'-0"



GROSSMAN DEVELOPMENT
OLD LYME MARKETPLACE
90 HALLS ROAD, OLD LYME, CT 06371

DISCLAIMER:
THIS DRAWING IS THE PROPERTY OF COLLIERS ENGINEERING & DESIGN AND IS NOT TO BE REPRODUCED OR COPIED IN WHOLE OR IN PART. THIS DRAWING IS TO BE USED FOR THIS SPECIFIC PROJECT ONLY AND NOT TO BE USED ON ANY OTHER PROJECT. THIS DRAWING SHALL BE RETURNED TO COLLIERS ENGINEERING & DESIGN UPON WRITTEN REQUEST.

Colliers Engineering & Design,
Architecture, Landscape Architecture,
Surveying, CT P.C.

DATE: 1/12/2026 1:27:13 PM
PROJECT NO: 23365

LOD 12B
DRAWING TITLE
UNIT 12B

DRAWN BY: JC
CHECKED BY: RK