

FOR LEASE

POLLARD & BAGBY
REAL ESTATE

2706-2716 Enterprise Pkwy, Richmond, VA 23294



Located in the heart of Western Henrico County on Enterprise Parkway, this single story office building provides multiple suites immediately available for lease. All suites have separate dedicated entry and direct ground floor access off the parking lot. The building has a brand new roof and recently paved parking lot with approximately 90 parking spaces.

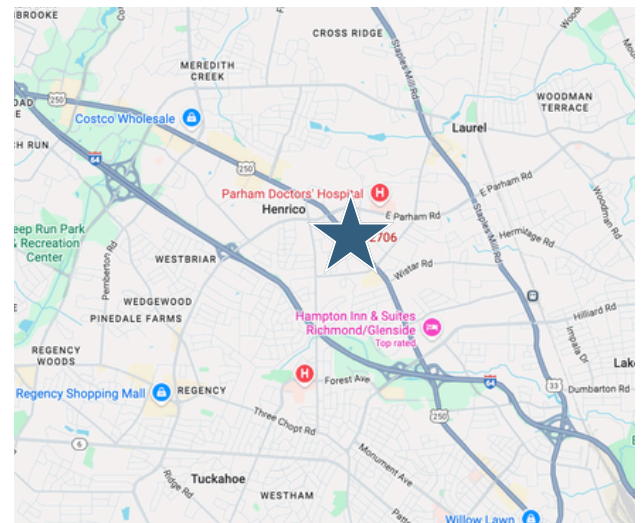
PROPERTY FEATURES:

- Suites available for lease:
 - Suite 2714A - 810 sf
 - Suite 2710 - 1,808 sf
- NNN lease.
- Contact Agent for pricing.
- Located right off of W. Broad Street.
- Renovated common area restrooms.
- Zoning B-3 (Henrico County).

CONTACT:

Lebs Breedon, CCIM

Commercial Sales, Leasing & Property Management Associate
C: 804.536.3933 lebs.breedon@pollardandbagby.com



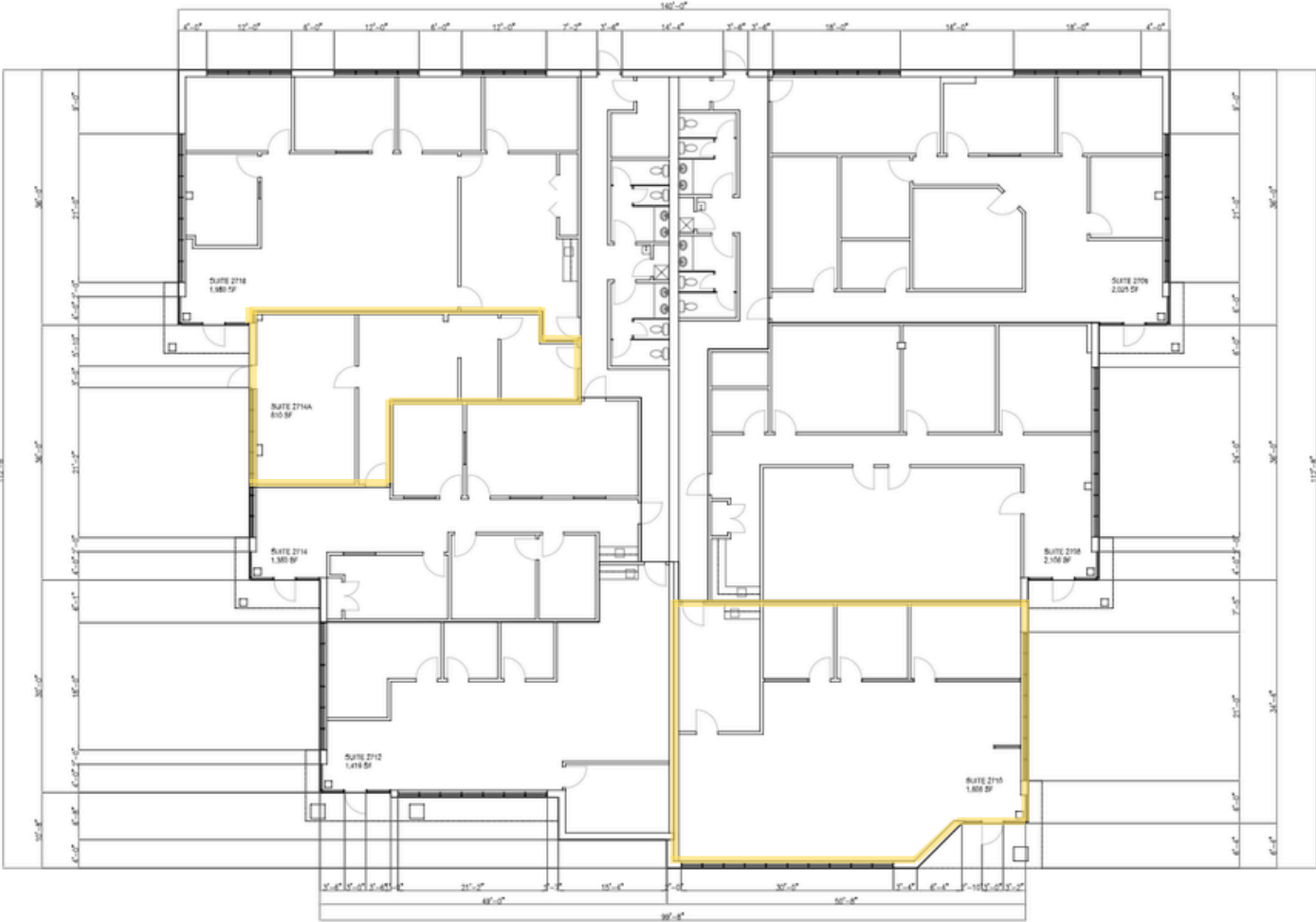
No warranty or representation is made as to the accuracy of the foregoing information. Terms of sale or lease and availability are subject to change or withdrawal without notice.

FOR LEASE

POLLARD & BAGBY
REAL ESTATE

2706-2716 Enterprise Pkwy, Richmond, VA 23294

FLOOR PLAN:



FLOOR PLAN
SCALE: 1/8"=1'-0"

Pollard & Bagby, Inc. | Serving Richmond's Real Estate Market Since 1894
2 South 5th Street, P.O. Box 2488, Richmond, VA | O: 804.643.9011 | F: 804.782.9897 | pollardandbagby.com

No warranty or representation is made as to the accuracy of the foregoing information. Terms of sale or lease and availability are subject to change or withdrawal without notice.