

111 MILL CREEK PARKWAY

Suite 202, Chesapeake, VA 23323

OFFICE SPACE FOR LEASE



Christine Kaempfe, SIOR, Senior Vice President
christine.kaempfe@thalhimer.com
757 499 1384



Independently Owned and Operated / A Member of the Cushman & Wakefield Alliance

Cushman & Wakefield | Thalhimer © 2025. No warranty or representation, express or implied, is made to the accuracy or completeness of the information contained herein, and same is submitted subject to errors, omissions, change of price, rental or other conditions, withdrawal without notice, and to any special listing conditions imposed by the property owner(s). As applicable, we make no representation as to the condition of the property (or properties) in question.

111 MILL CREEK PARKWAY

Suite 202, Chesapeake, VA 23323

OFFICE SPACE FOR LEASE

PROPERTY FEATURES

Three-story brick building with atrium

Suite 202 available - 980 SF

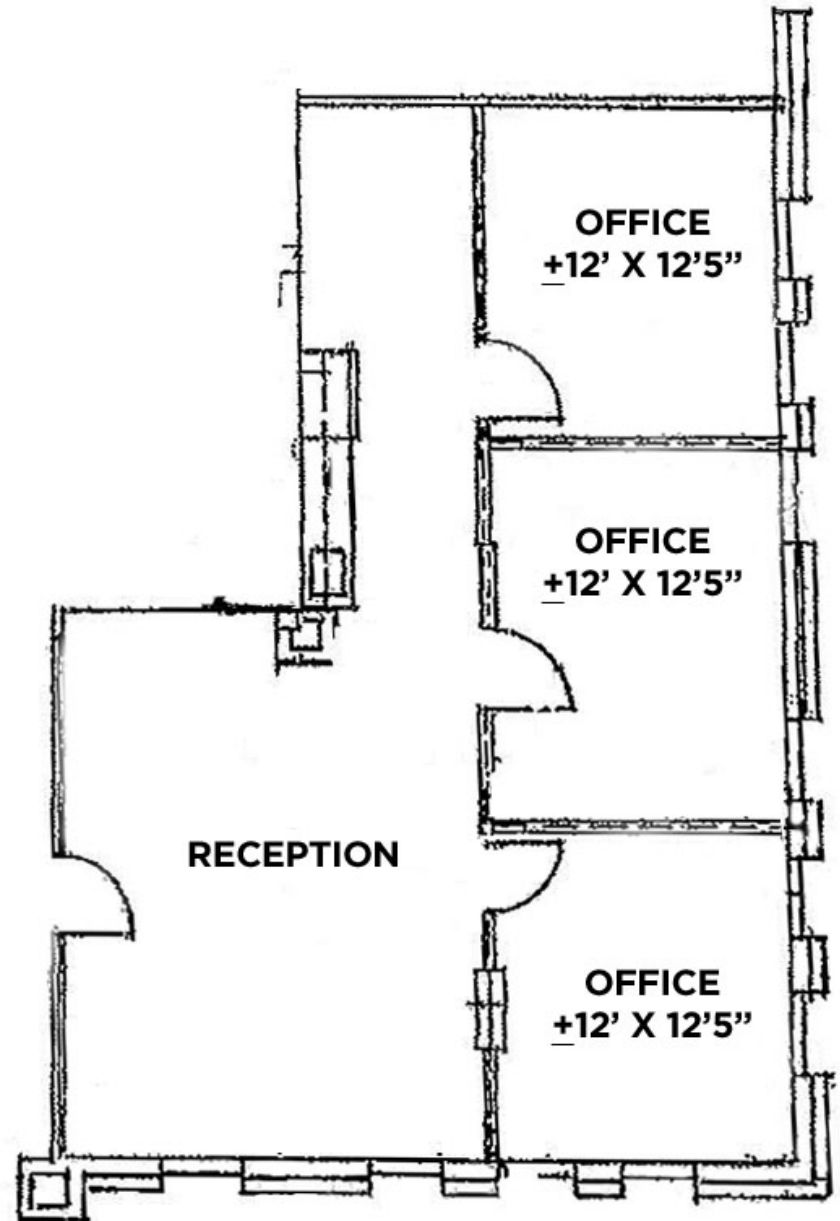
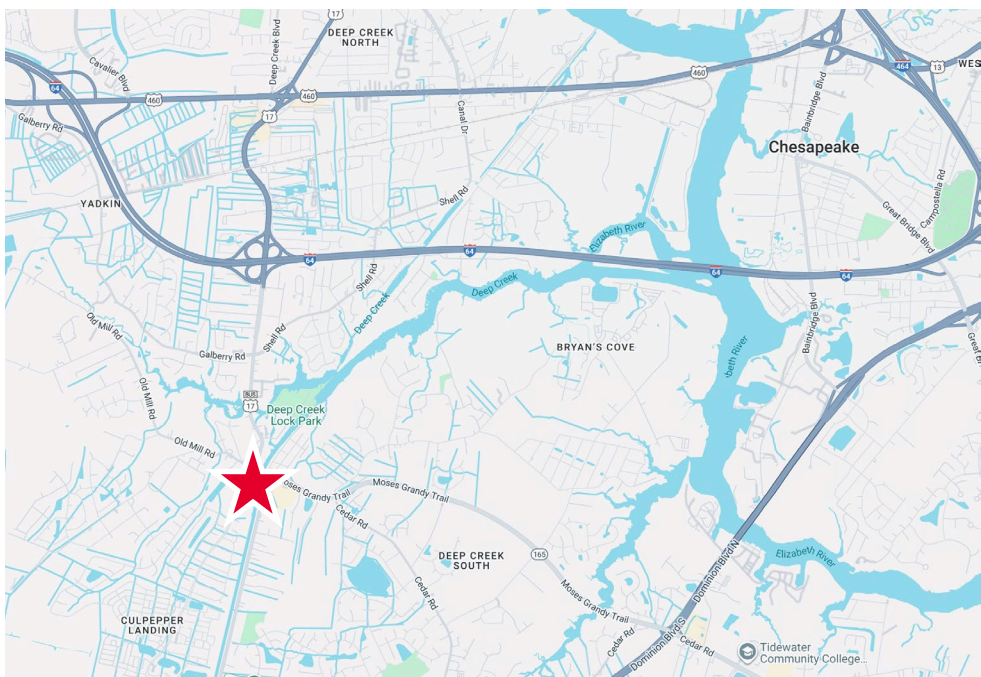
Canopy for loading and unloading passengers

Located in the Deep Creek section of Chesapeake, one of the city's fastest growing boroughs

Easy access to Cedar Road, George Washington Highway and I-64

Immediately available

\$20.00 SF/Year; Net of janitorial





For more information, please contact:

Christine Kaempfe, SIOR, Senior Vice President | christine.kaempfe@thalhimer.com | 757 499 1384



Town Center of Virginia Beach
222 Central Park Avenue, Suite 1500
Virginia Beach, VA 23462
thalhimer.com

Independently Owned and Operated / A Member of the Cushman & Wakefield Alliance

Cushman & Wakefield | Thalhimer © 2025. No warranty or representation, express or implied, is made to the accuracy or completeness of the information contained herein, and same is submitted subject to errors, omissions, change of price, rental or other conditions, withdrawal without notice, and to any special listing conditions imposed by the property owner(s). As applicable, we make no representation as to the condition of the property (or properties) in question.