

21580 Stevens Creek Blvd.

Cupertino, CA 95014

For Lease



**COLDWELL BANKER
COMMERCIAL
REALTY**



Property Overview

Prominent Cupertino location at the corner of Bubb Rd. & Stevens Creek Blvd. Recently renovated common areas. Ample parking with 49 shared parking spaces. Diverse tenant mix makes this building suitable for a variety of businesses. Contact agent with questions or to tour.

Details

Available ~447 sqft. in suite 112 ~ 760 sqft. in suite #205
Rentable SF: ~ 1118 sqft. in suite #204 ~ 1000 sqft in suite #206

Asking Price: \$3.75 sqft/month full service

Features: Suite #112 - located downstairs directly off parking lot, 1 small room, 1 larger room w/ possibility of water, available now
Suite #204 - located upstairs, available now
Suite #205 - located upstairs, available now
Suite #206 - located upstairs, large main room w/ 3 smaller rooms & a storage room, available now

FOR MORE DETAILS CONTACT:

Huei-Saint Shwe | huei-saint.shwe@cbcrrt.com | CalBRE: 01397036
Coldwell Banker Commercial NRT
CBCWorldwide.com
19330 Stevens Creek Blvd Cupertino, CA 95014

C: 408.857.2541 F: 408.252.0538 O: 408.252.1133

©2023 Coldwell Banker. All Rights Reserved. Coldwell Banker and the Coldwell Banker logo are trademarks of Coldwell Banker Real Estate LLC. The Coldwell Banker® System is comprised of company owned offices which are owned by a subsidiary of Anywhere Advisors LLC and franchised offices which are independently owned and operated. The Coldwell Banker System fully supports the principles of the Fair Housing Act and the Equal Opportunity Act. CalRE #01908304

21580 Stevens Creek Blvd.

Cupertino, CA 95014

For Lease



**COLDWELL BANKER
COMMERCIAL
REALTY**



PROPERTY IS LOCATED HERE:

Close Proximity to :

- | | | | |
|--------------------------------------|---------------------------------------|---------------------------------------|---------------------------------|
| Whole Foods Market.....0.8 Miles | Deep Cliff Gold Course..... 1.6 Miles | Apple Park (Campus 2).....4.7 Miles | San Jose Airport.....12.2 Miles |
| Monta Vista High.....0.9 Miles | Main St. Cupertino.....2.4 Miles | Valley Fair/Santana Row.....7.6 Miles | Meta (Facebook).....14.1 Miles |
| Target Shopping Center.....1.0 Miles | Apple Infinite Loop..... 2.9 Miles | Google.....7.9 Miles | *All Approx. Distances |

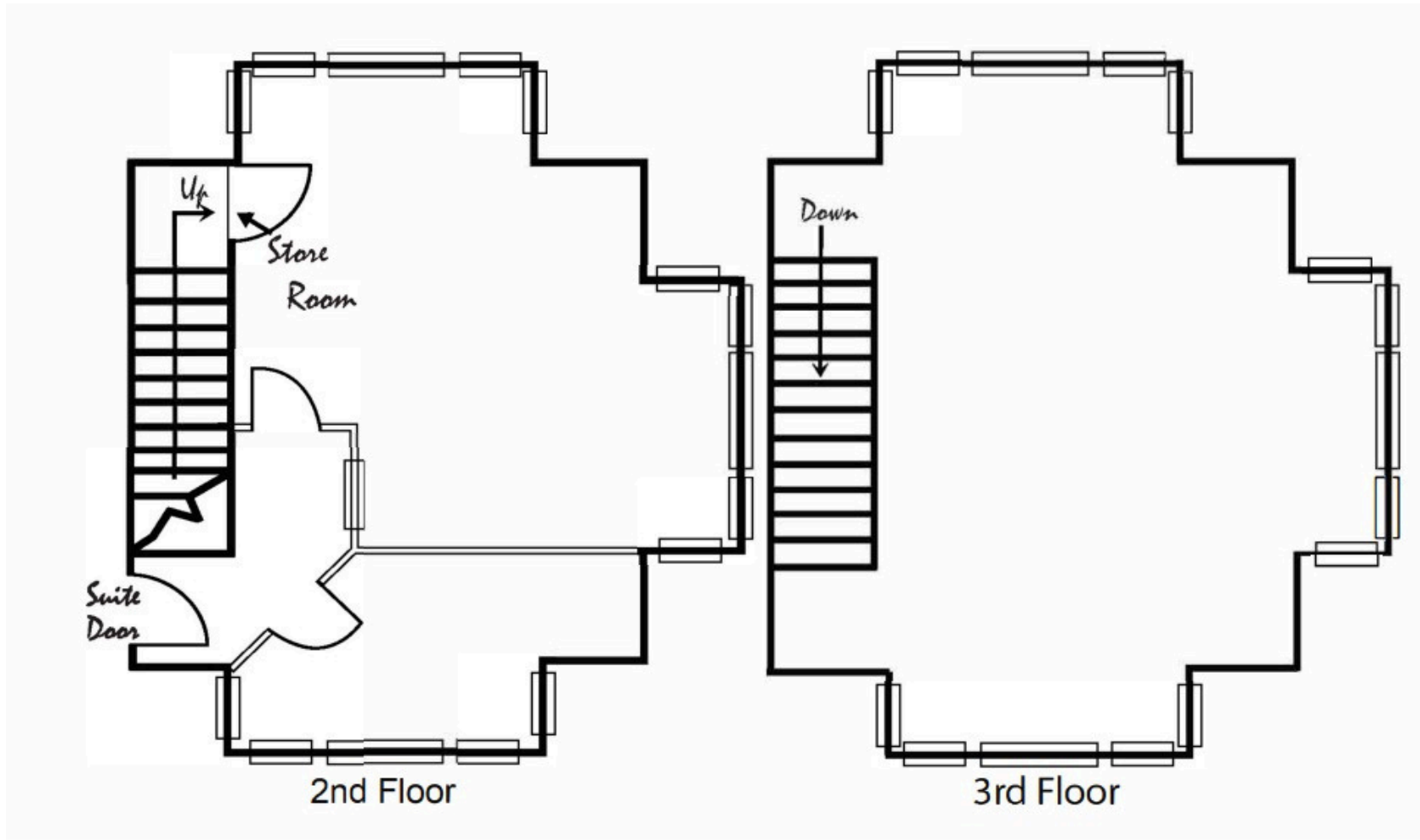
21580 Stevens Creek Blvd.

Cupertino, CA 95014

For Lease



**COLDWELL BANKER
COMMERCIAL
REALTY**



Suite #204
~1118 rentable sqft

*Not drawn to scale

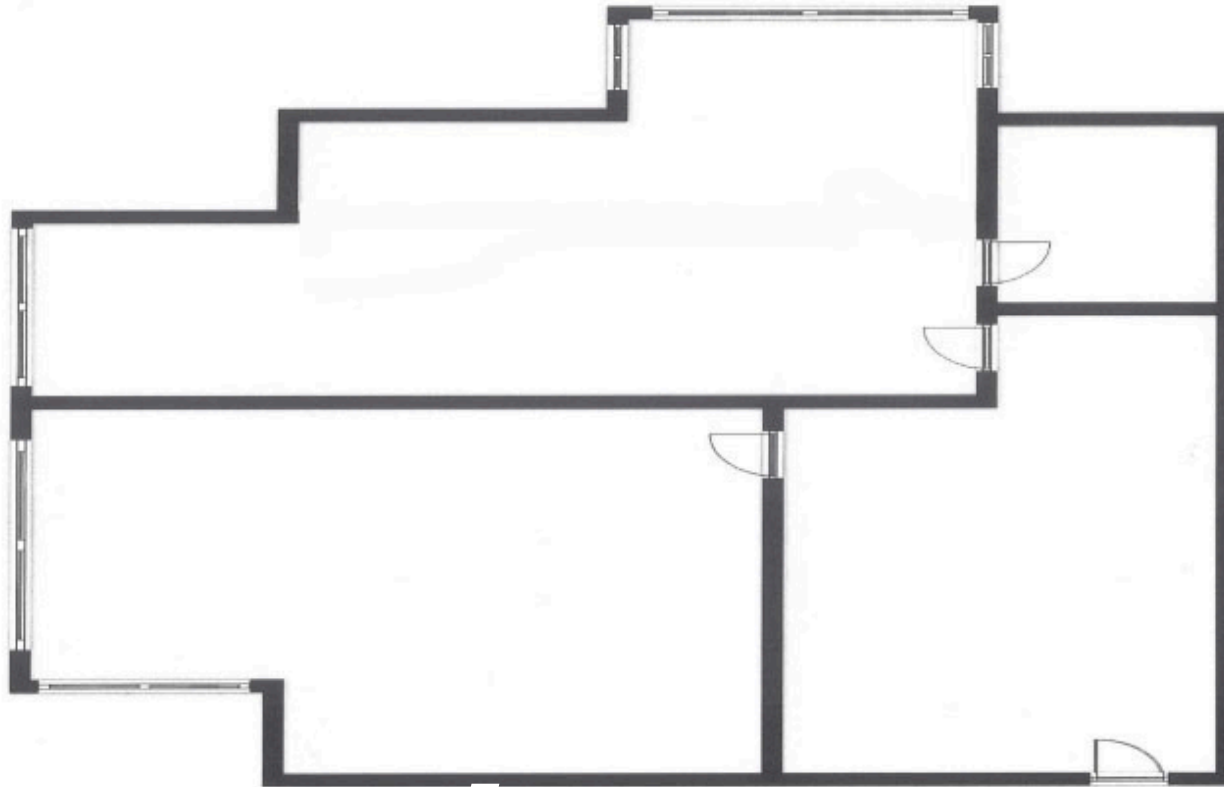
21580 Stevens Creek Blvd.

Cupertino, CA 95014

For Lease



**COLDWELL BANKER
COMMERCIAL
REALTY**



Suite #205
~760 rentable sqft

*Not drawn to scale