



# 244 CALIFORNIA

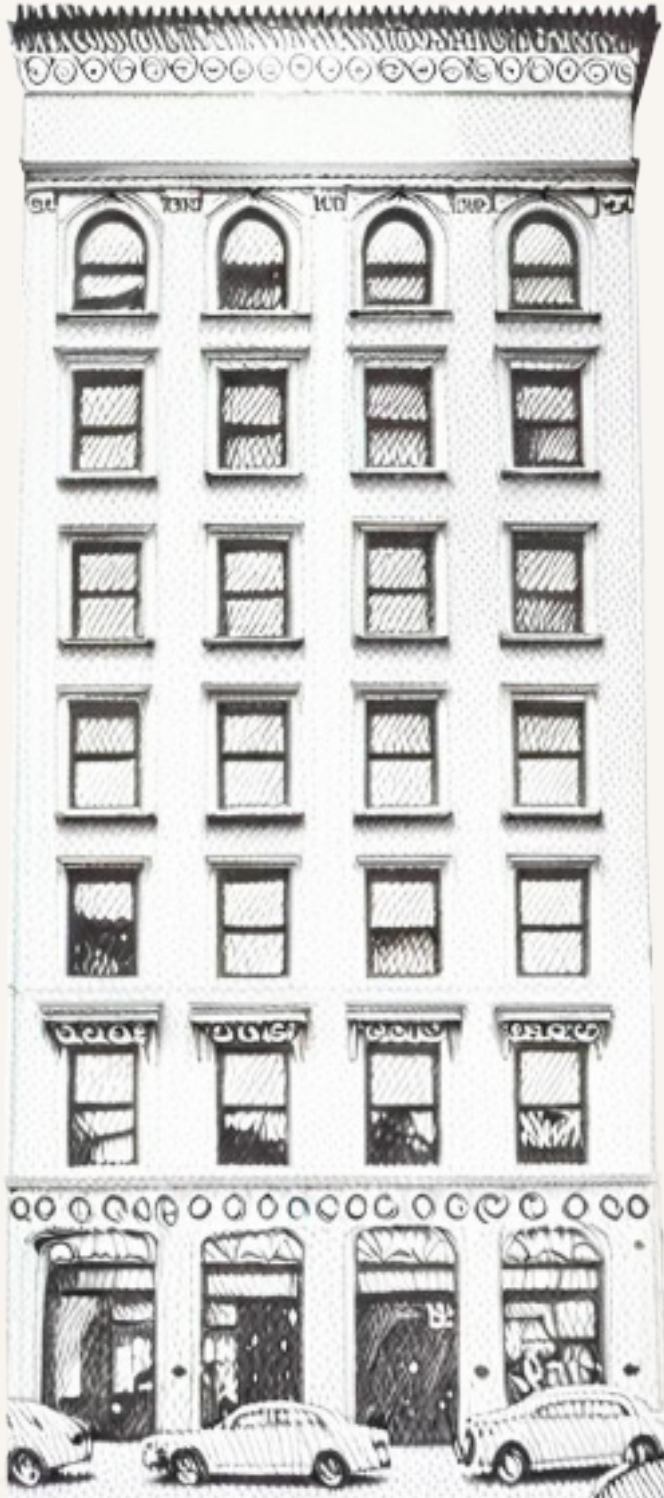
SAN FRANCISCO, CA



CUSHMAN & WAKEFIELD



# AVAILABILITIES

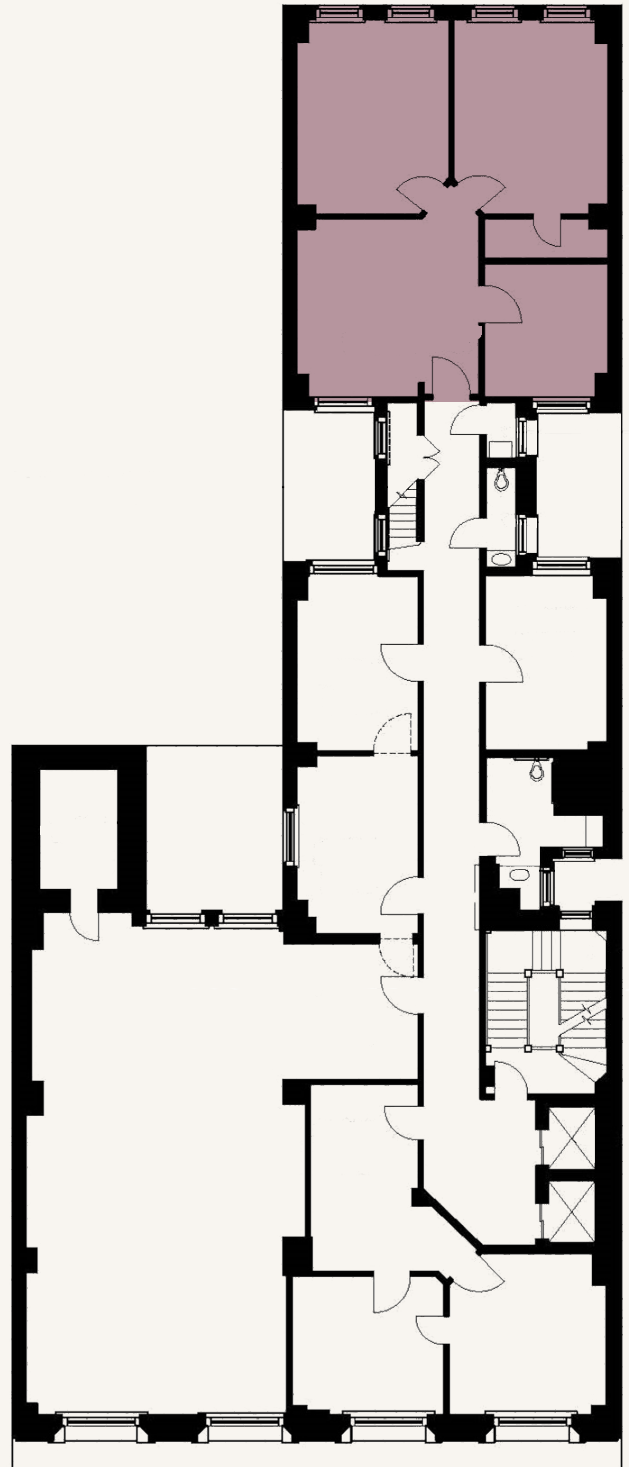


- FLOOR 7 / SUITE 700: 2,773 RSF  
FLOOR 7 / SUITE 710: 1,233 RSF
- FLOOR 6 / SUITE 610: 1,231 RSF
- FLOOR 5 / SUITE 500: 2,100 RSF  
FLOOR 5 / SUITE 506: 256 RSF  
FLOOR 5 / SUITE 507: 190 RSF
- FLOOR 4 / SUITE 410: 1,220 RSF
- FLOOR 3 / SUITE 300: 2,379 RSF
- FLOOR 2 / SUITE 210: 1,214 RSF



# FLOOR 2

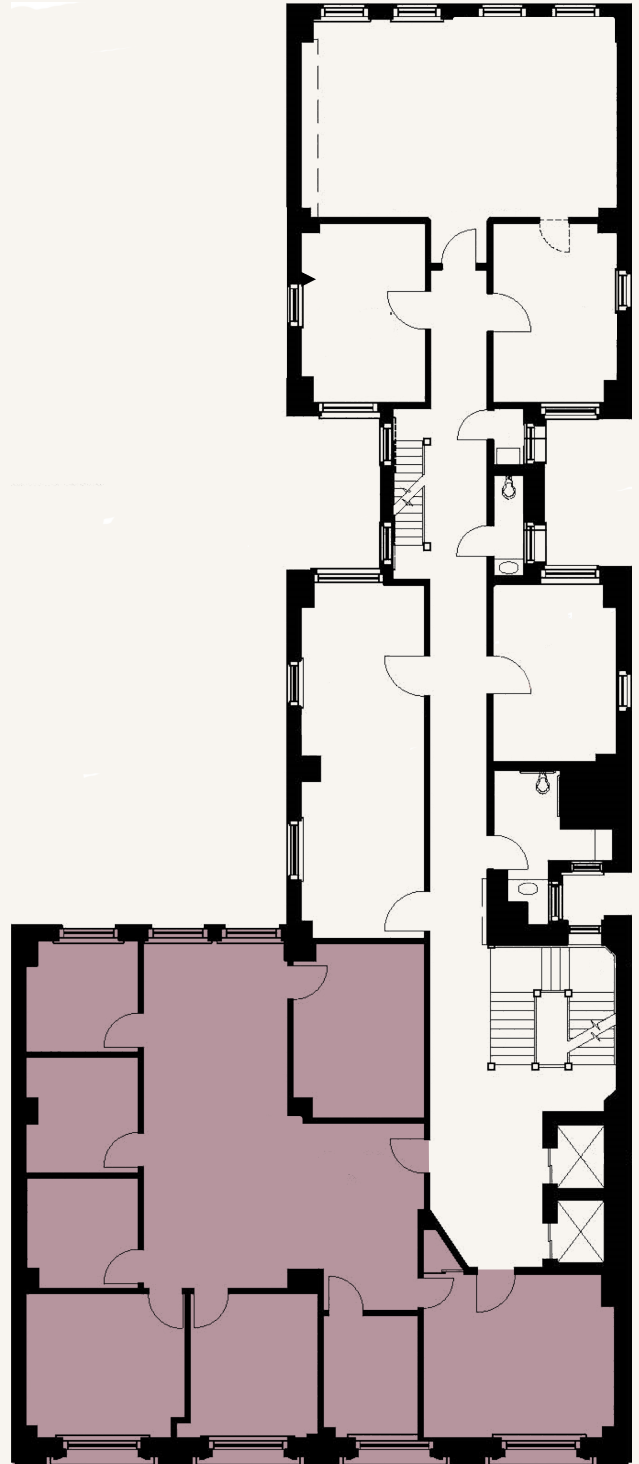
*Suite 210* | 1,214 R.SF





# FLOOR 3

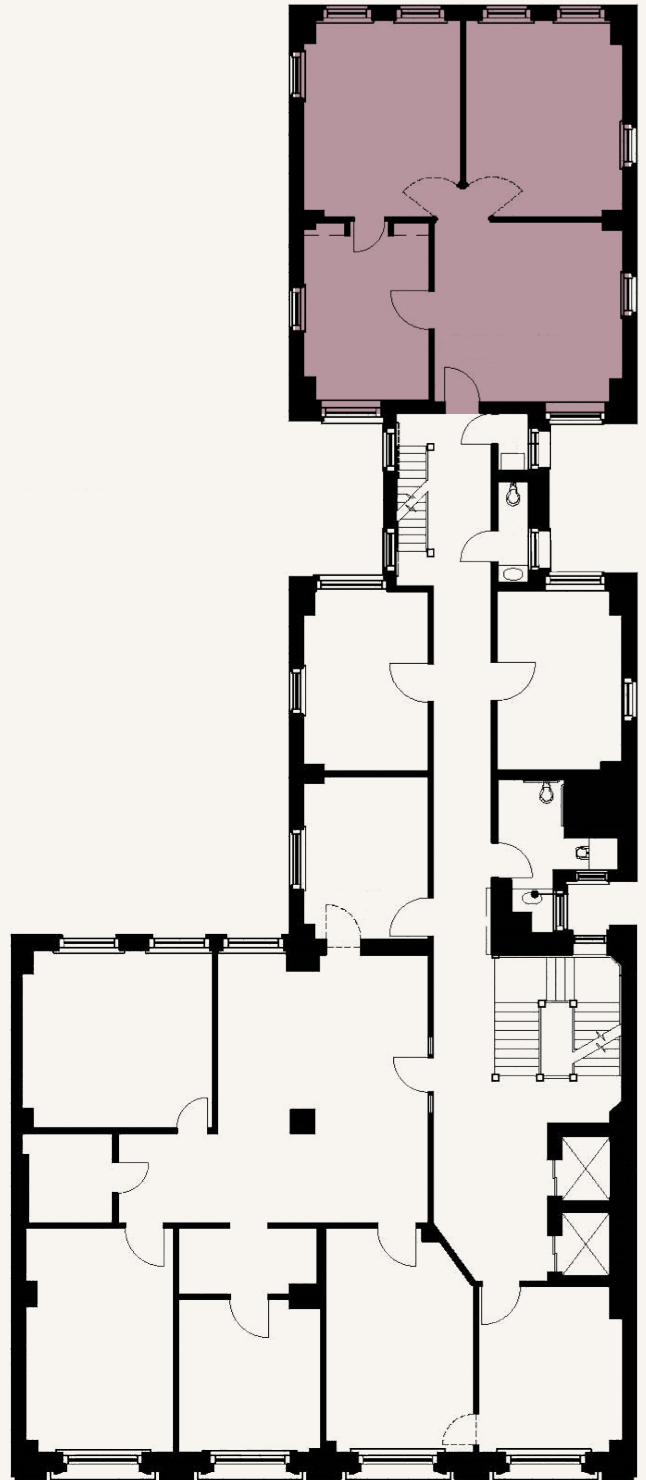
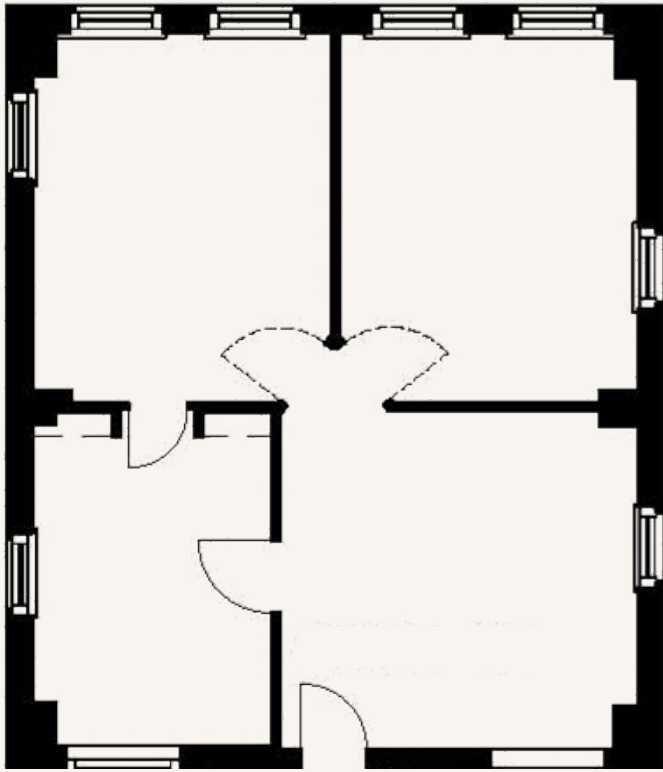
*Suite 310* | 2,379 R.SF





# FLOOR 4

*Suite 410* | 1,220 R.SF



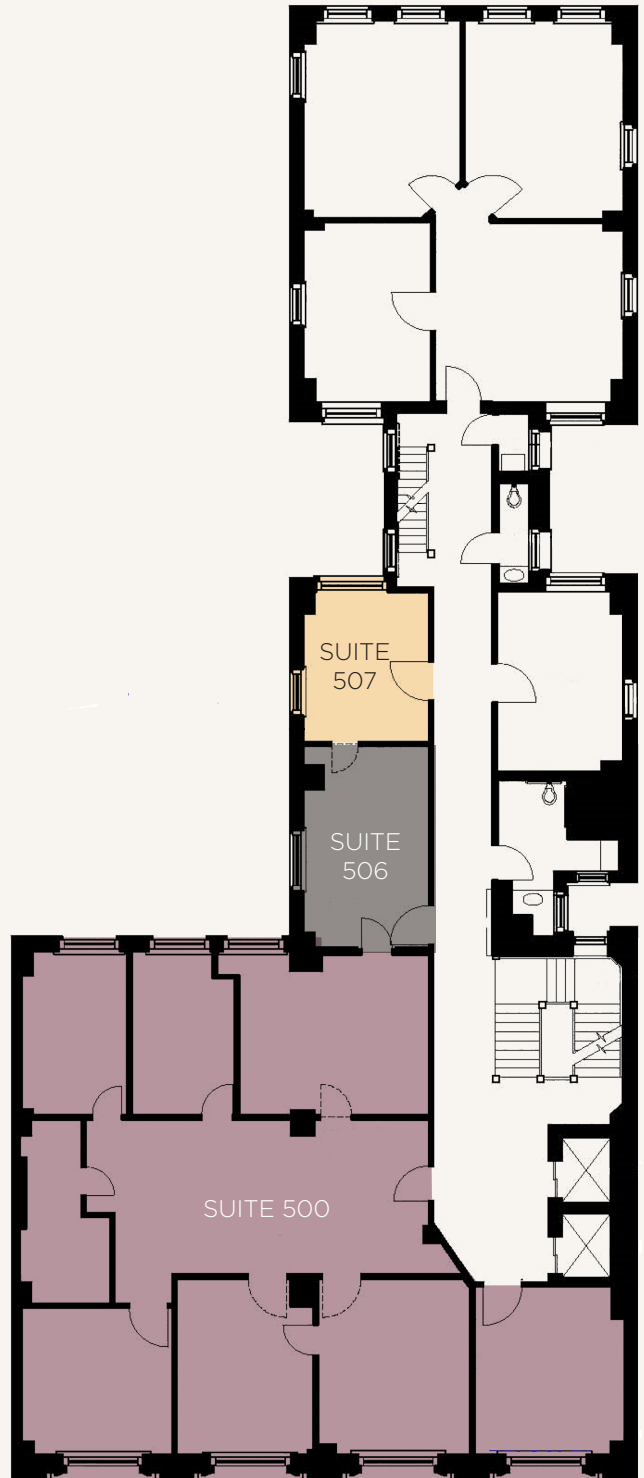


# FLOOR 5

*Suite* 500 | 2,100 R.S.F.

*Suite* 506 | 256 R.S.F.

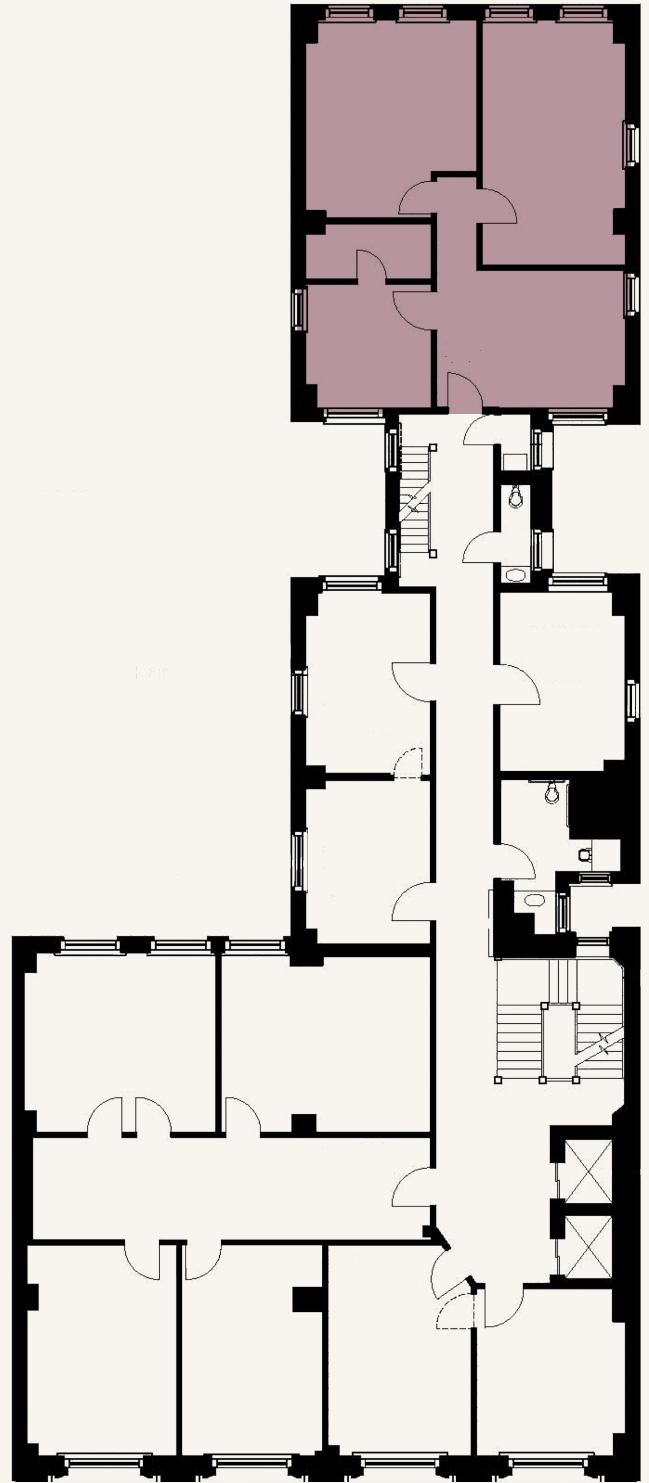
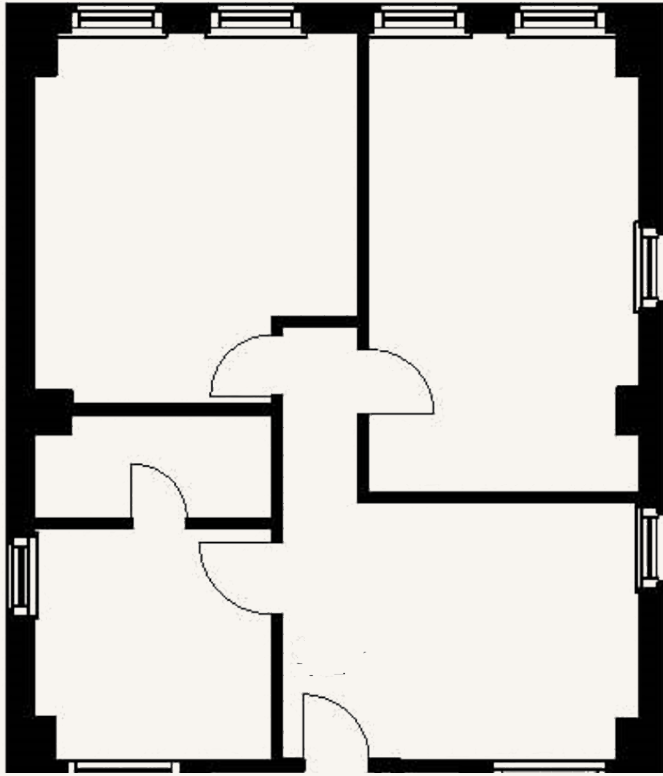
*Suite* 507 | 190 R.S.F.





# FLOOR 6

*Suite 610* | 1,321 R.SF

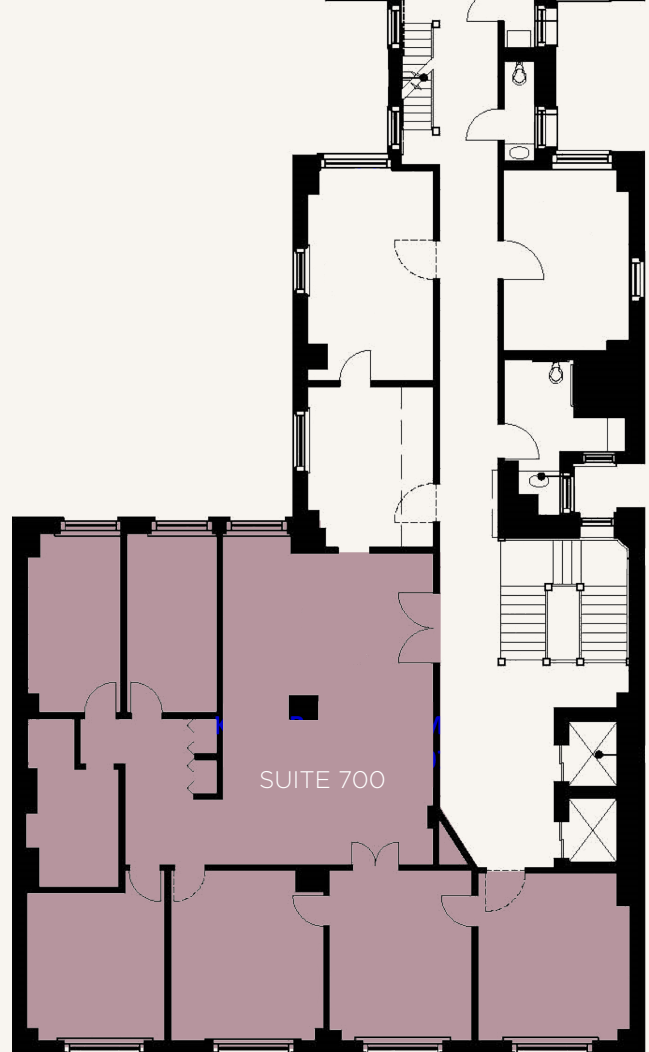
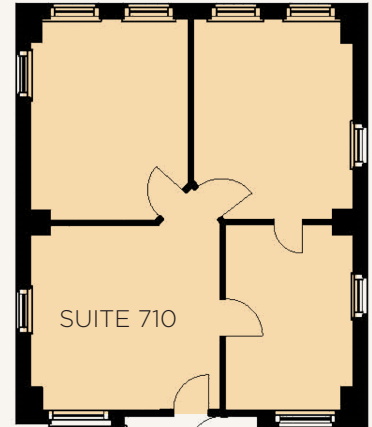




# FLOOR 7

*Suite 700* | 2,773 RSF

*Suite 710* | 1,233 RSF





BAILEE ESPOSITO

+1 203 561 9499

bailee.esposito@cushwake.com

Lic #02236040

REZA MUSAVI

+1 415 244 7575

reza.musavi@cushwake.com

Lic #01424202

