

COMPASS  
COMMERCIAL

# FOR LEASE

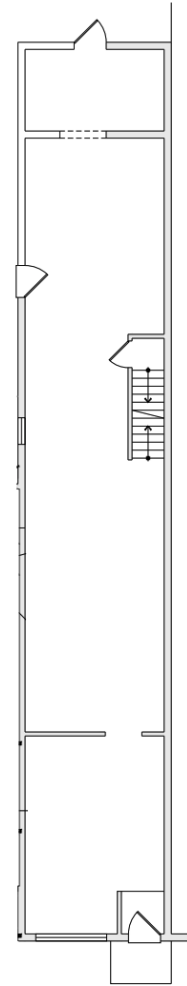
841 North Tatnall Street  
Wilmington DE, 19801



1st Floor Retail/Office Space for Lease



JUST LISTED



**Property Type:** Retail / Office

**Property Subtype:** Storefront Retail / Residential

**Leasable Area:** 1,218 RSF

**Renovated:** 2025

**Walk Score:** 95 (Walker's Paradise)

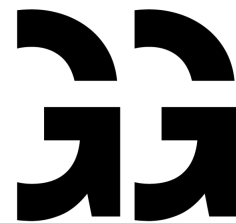
**Rental Rate:** \$19.00 /SF/YR NNN



**Mary Kate Garman**

M: 302.750.3080

marykate.garman@compass.com



The Garman  
Group



Compass RE is a licensed real estate broker. All material is intended for informational purposes only and is compiled from sources deemed reliable but is subject to errors, omissions, changes in price, condition, sale, or withdrawal without notice. No statement is made as to the accuracy of any description or measurements (including square footage). This is not intended to solicit property already listed. No financial or legal advice provided. Equal Housing Opportunity. Photos may be virtually staged or digitally enhanced and may not reflect actual property conditions.

COMPASS RE