

UPPER WEST SIDE, MANHATTAN, NEW YORK

# 433 WEST 67TH STREET

MOD



COMMUNITY FACILITY SPACE FOR LEASE

# SPACE DETAILS

## LOCATION

Between Riverside Blvd and Freedom Pl

## SPACE

Ground Floor: 1,600 SF

## POSSESSION

Immediate

## CEILING HEIGHT

12 Feet

## ASKING RENT

Upon Request

## NEIGHBORS

Blu Cafe, Dwight PreSchool, Biscuits & Bath, Modern Wine, Jubilee Marketplace, Happy Teeth NY, J's Cleaners, Riverside Park

## TRANSPORTATION

1

## COMMENTS

- Community Facility Space for Lease
- At the Base of a Luxury Rental Building
- Multiple Means of Egress
- Sprinklers in Place
- HVAC in place
- Bathrooms in place
- Dense Residential Area

# CONTACTS

## MEYER DAGMY

718-249-3613

m@modcre.com

## EDDIE MAMIYE

917-379-6719

e@modcre.com

## ISAAC BIJOU

718-594-6377

ib@modcre.com



# INTERIOR IMAGES

SPACE B



## CONTACTS

**MEYER DAGMY**

718-249-3613

m@modcre.com

**EDDIE MAMIYE**

917-379-6719

e@modcre.com

**ISAAC BIJOU**

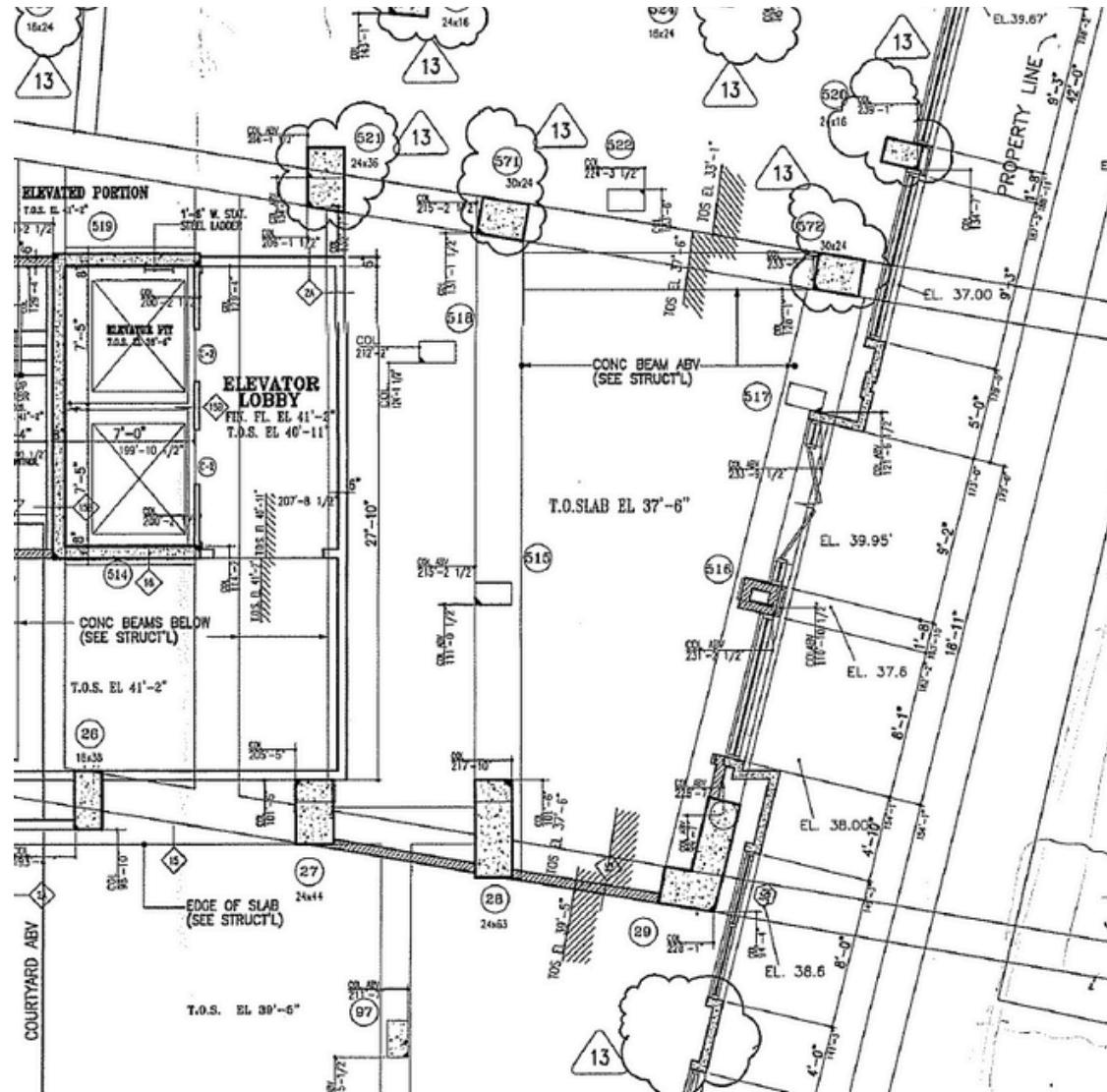
718-594-6377

ib@modcre.com



# FLOOR PLAN

SPACE B



## CONTACTS

**MEYER DAGMY**

718-249-3613

m@modcre.com

**EDDIE MAMIYE**

917-379-6719

e@modcre.com

**ISAAC BIJOU**

718-594-6377

ib@modcre.com



# AREA MAP



## CONTACTS

### MEYER DAGMY

718-249-3613

m@modcre.com

### EDDIE MAMIYE

917-379-6719

e@modcre.com

### ISAAC BIJOU

718-594-6377

ib@modcre.com

