

FOR LEASE

525 S DOUGLAS ST

EL SEGUNDO, CA 90245



Modern two-story office building with free subterranean parking. Walking distance to Green Line Metro Station and Rosecrans Ave amenities.

Suite 215: 1,607 RSF
Suite 225: 2,147 RSF
Suite 255: 3,862 RSF

Efficient office suites with soaring two-story lobby entrance

Pride of ownership building with on-site management

Pro-business City of El Segundo location

Walking distance to restaurants and area amenities

Close to the beach cities, freeways, and LAX

All suites have kitchens

Workstations available

\$2.65 FS

LEASE RATE

3/1K

PARKING RATIO

CHRIS RIEGEL

Senior Vice President, Shareholder
310.906.3271
chris.riegel@kidder.com

LIC N° 01030733

ANDREW DILFER, SIOR, GLS

Executive Vice President, Shareholder
310.906.3280
andrew.dilfer@kidder.com

LIC N° 01455665

KIDDER.COM

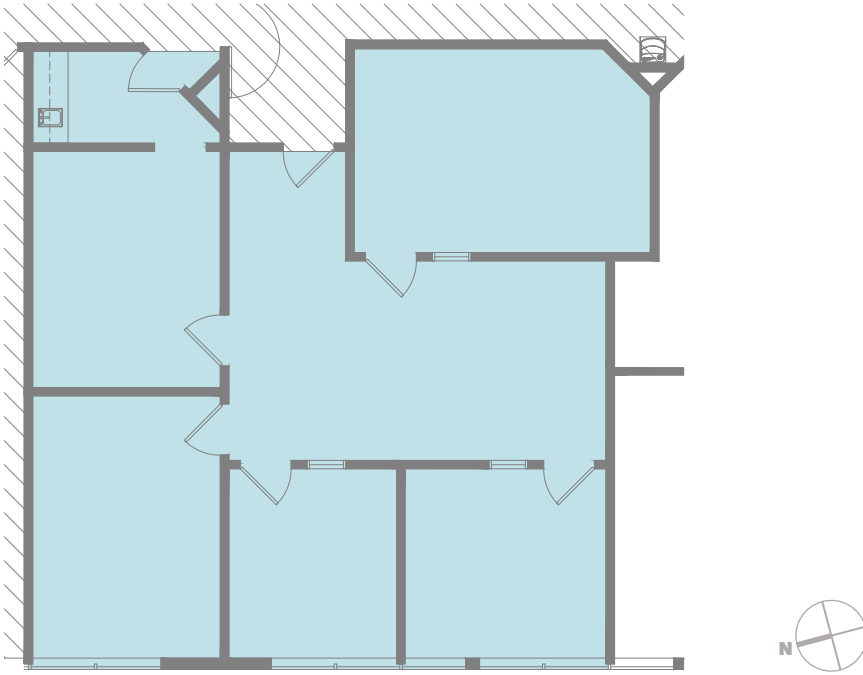
This information supplied herein is from sources we deem reliable. It is provided without any representation, warranty, or guarantee, expressed or implied as to its accuracy. Prospective Buyer or Tenant should conduct an independent investigation and verification of all matters deemed to be material, including, but not limited to, statements of income and expenses. Consult your attorney, accountant, or other professional advisor.

km Kidder Mathews

SUITE 215

1,607 RSF

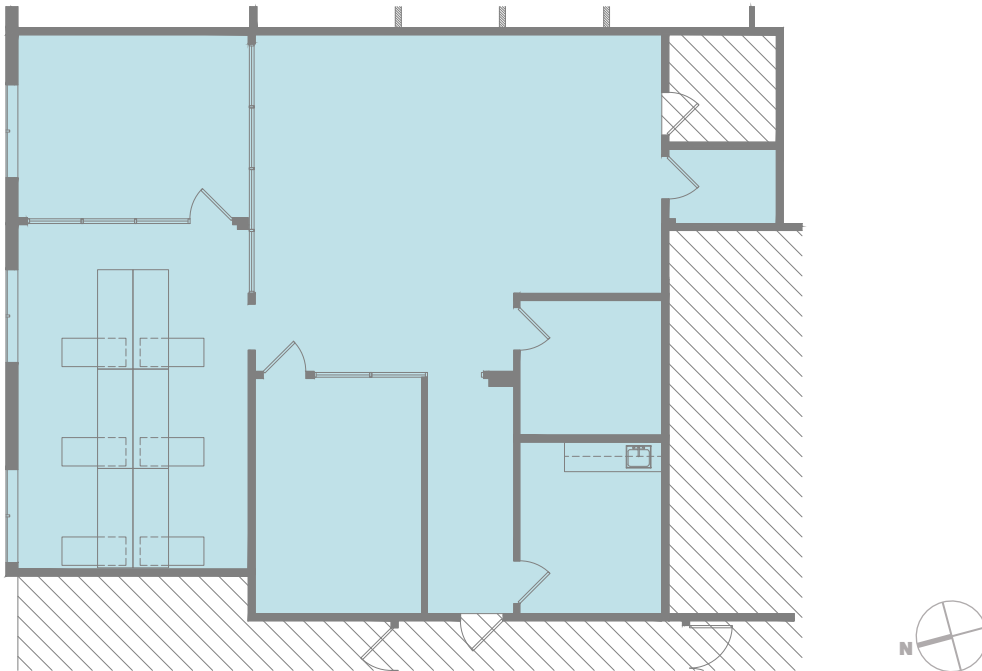
SPACE AVAILABLE



SUITE 225

2,147 RSF

SPACE AVAILABLE



KIDDER.COM

This information supplied herein is from sources we deem reliable. It is provided without any representation, warranty, or guarantee, expressed or implied as to its accuracy. Prospective Buyer or Tenant should conduct an independent investigation and verification of all matters deemed to be material, including, but not limited to, statements of income and expenses. Consult your attorney, accountant, or other professional advisor.

SUITE 255

3,862 RSF

SPACE AVAILABLE



