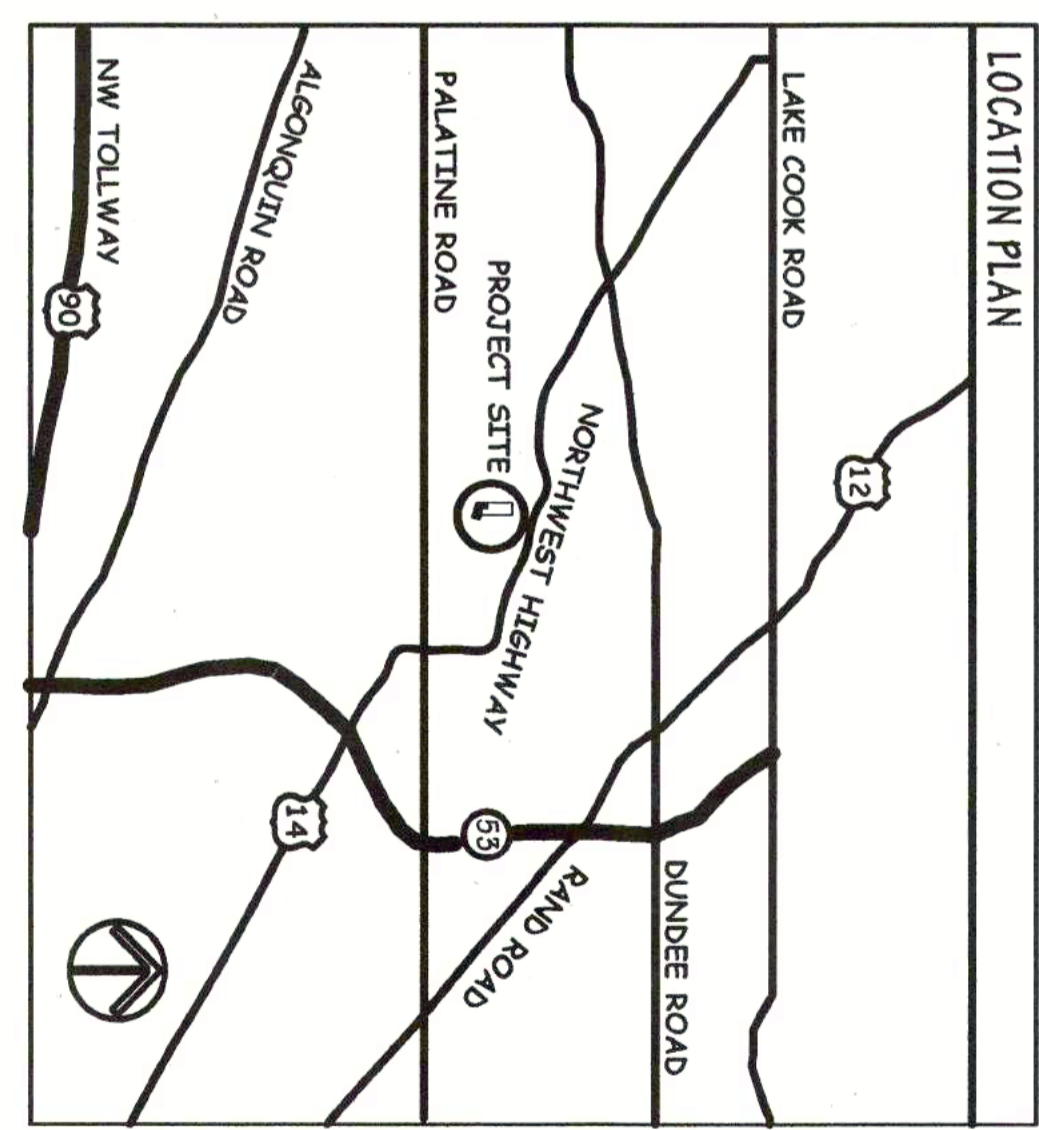


GENERAL NOTES AND REQUIREMENTS

1. ALL WORK IS TO BE PERFORMED IN COMPLIANCE WITH ALL BUILDING CODES, ORDINANCES, RULES AND REGULATIONS APPLICABLE AND ENFORCEABLE IN THE CITY OF PALATINE, ILLINOIS.
2. THE GENERAL CONTRACTOR IS TO OBTAIN AND PAY FOR ALL REQUIRED PERMITS, LICENSES AND APPROVALS.
3. ALL CONTRACTORS ARE REQUIRED TO VISIT THE PROJECT SITE, COMPARE THE DRAWINGS WITH ALL WORK IN PLACE, IN ORDER TO BE AWARE OF EXISTING BUILDING CONDITIONS AND TO VERIFY THAT ALL WORK IS BEING DONE IN ACCORDANCE WITH THE CONTRACT DOCUMENTS. THE GENERAL CONTRACTOR SHALL BE RESPONSIBLE FOR OBTAINING ANY WORK REQUIRED FOR CONFORMANCE WITH THE DRAWINGS.
4. ANY CHANGES, DEVIATIONS OR ALTERNATIVES TO THE SPECIFICATIONS MUST BE SUBMITTED TO ARCHITECT OR OWNER FOR WRITTEN APPROVAL PRIOR TO INSTALLATION.
5. KEEP CONSTRUCTION WASTE TO A MINIMUM DURING NORMAL PRACTICE WORKS. SCHEDULE EXCESSIVE WASTE ACTIVITIES FOR OFF HOURS. NO CONCRETE BREAKERS, DRY SAWS, OR GASOLINE-POWERED SAWS MAY BE USED.
6. TAKE ALL NECESSARY PRECAUTIONS TO PROTECT ADJACENT SPACES DURING CONSTRUCTION INCLUDING DUST SCREENS, ETC. ALLOW FOR PUBLIC ACCESS OF SIDEWALKS.
7. PROVIDE ALL LABOR, MATERIALS, EQUIPMENT AND INCIDENTALS AS REQUIRED FOR A COMPLETE INSTALLATION OF THE WORK INDICATED.
8. ALL MATERIALS AND EQUIPMENT USED IN THE WORK ARE TO BE OF GOOD QUALITY AND NEW UNLESS INDICATED OTHERWISE.
9. RECOMMENDED PREPARATIONS FOR INSTALLATION. ALL CONTRACTORS ARE TO BE SCHEDULED MECHANICS IN THE EXECUTION OF THEIR PORTION OF THE WORK. THOROUGHLY FAMILIAR WITH THE METHODS AND MATERIALS REQUIRED. PREPARE ALL SPECIFICATIONS APPROXIMATE TO THE SPECIFIC TRADE.
10. CONCEAL PIPES, DUCTS AND WIRING IN WALL AND CEILING CONSTRUCTION OF FINISHED AREAS EXCEPT WHERE INDICATED OTHERWISE.
11. RESCUE CUTTING BITING AND PATCHING TO MAKE WORK PROGRESS TOGETHER. WHEN NEW WORK COMES WITH EXISTING AND THERE IS A NEED TO PATCH AND MAKE GOOD TO MATCH EXISTING WORK. MAKE PATCHES INCONSPICUOUS IN FINAL ASSEMBLY.
12. PRIOR TO THE STARTING WORK, EACH TRADE WILL EXAMINE AND VERIFY CONDITIONS OF WORK. DO NOT PROCEED WITH THE WORK UNTIL SATISFACTORY CONDITIONS HAVE BEEN CORRECTED. START OF INSTALLATION WILL BE CONSIDERED AS CONCLUSIVE EVIDENCE THAT THE EXISTING CONDITIONS HAVE BEEN EXAMINED AND ARE ACCEPTABLE TO THE INSTALLER.
13. IN NO CASE SHALL DIMENSIONS BE SCALED FROM DRAWINGS. THE CONTRACTOR IS TO VERIFY ALL CONDITIONS AND DIMENSIONS IN THE FIELD BEFORE PROCEEDING WITH CONSTRUCTION. NOTIFY THE ARCHITECT OF ANY DISCREPANCIES FOR CLARIFICATION PRIOR TO PROCEEDING WITH WORK.
14. ALL DIMENSIONS ARE TO FACE UNLESS NOTED OTHERWISE. FINISH FLOOR DIMENSIONS ARE TO FACE UNLESS NOTED OTHERWISE. CEILING HEIGHT DIMENSIONS ARE TO FINISHED SURFACES UNLESS OTHERWISE NOTED.
15. SUBMIT TO THE ARCHITECT IN TRIPLICATE SHOP DRAWINGS AND MANUFACTURER'S LITERATURE FOR ITEMS INDICATED IN THE SPECIFICATIONS.
16. DURING CONSTRUCTION, THE GENERAL CONTRACTOR IS REQUIRED TO SECURE THE SITE FOR HIS OWN SECURITY.
17. DURING CONSTRUCTION MAINTAIN WALKWAYS AND PUBLIC PROPERTIES FREE FROM ACCUMULATIONS OF WASTE MATERIALS AND DEBRIS ON A DAILY BASIS. AT THE END OF EACH DAY, ALL WASTE MATERIALS AND DEBRIS SHALL BE REMOVED FROM THE SITE. ALL DEBRIS IS TO BE SCHEDULED SO AS NOT TO INTERFERE WITH NORMAL BUILDING OPERATIONS.
18. THROUGHOUT THE PROGRESS OF CONSTRUCTION, THE GENERAL CONTRACTOR IS TO MAINTAIN ACCESS TO ALL AREAS OF THE PROJECT. THE GENERAL CONTRACTOR SHALL BE RESPONSIBLE FOR OBTAINING ALL NECESSARY PERMITS, LICENSES AND APPROVALS. THE GENERAL CONTRACTOR SHALL BE RESPONSIBLE FOR OBTAINING ALL NECESSARY PERMITS, LICENSES AND APPROVALS. THE GENERAL CONTRACTOR SHALL BE RESPONSIBLE FOR OBTAINING ALL NECESSARY PERMITS, LICENSES AND APPROVALS.
19. AT THE CONCLUSION OF THE PROJECT, REMOVE ALL MATERIALS AND EQUIPMENT ALONG WITH ALL GUARANTEES AND WARRANTIES.
20. ANY MODIFICATIONS OR NEW WORK REQUIRING CUTTING, PATCHING, OR REPAIRING OF THE EXISTING WORK MUST BE ACCOMPANIED BY THE DEVELOPER'S ORIGINAL CONTRACTOR. NO OTHER WORKING TOOLS WILL REMAIN ON THE JOB.
21. EACH CONTRACTOR AND SUB-CONTRACTOR SHALL GUARANTEE ALL WORK FOR A PERIOD OF ONE YEAR AFTER ACCEPTANCE OF THE COMPLETION OF WORK.
22. ALL WORK IS TO OCCUR IN PHASES. THE EXISTING PRACTICE IS TO REMAIN FULLY OPERATIONAL THROUGHOUT ALL PHASES OF WORK. TAKE ALL NECESSARY PRECAUTIONS TO MAINTAIN SERVICE AND SAFETY DURING WORK.

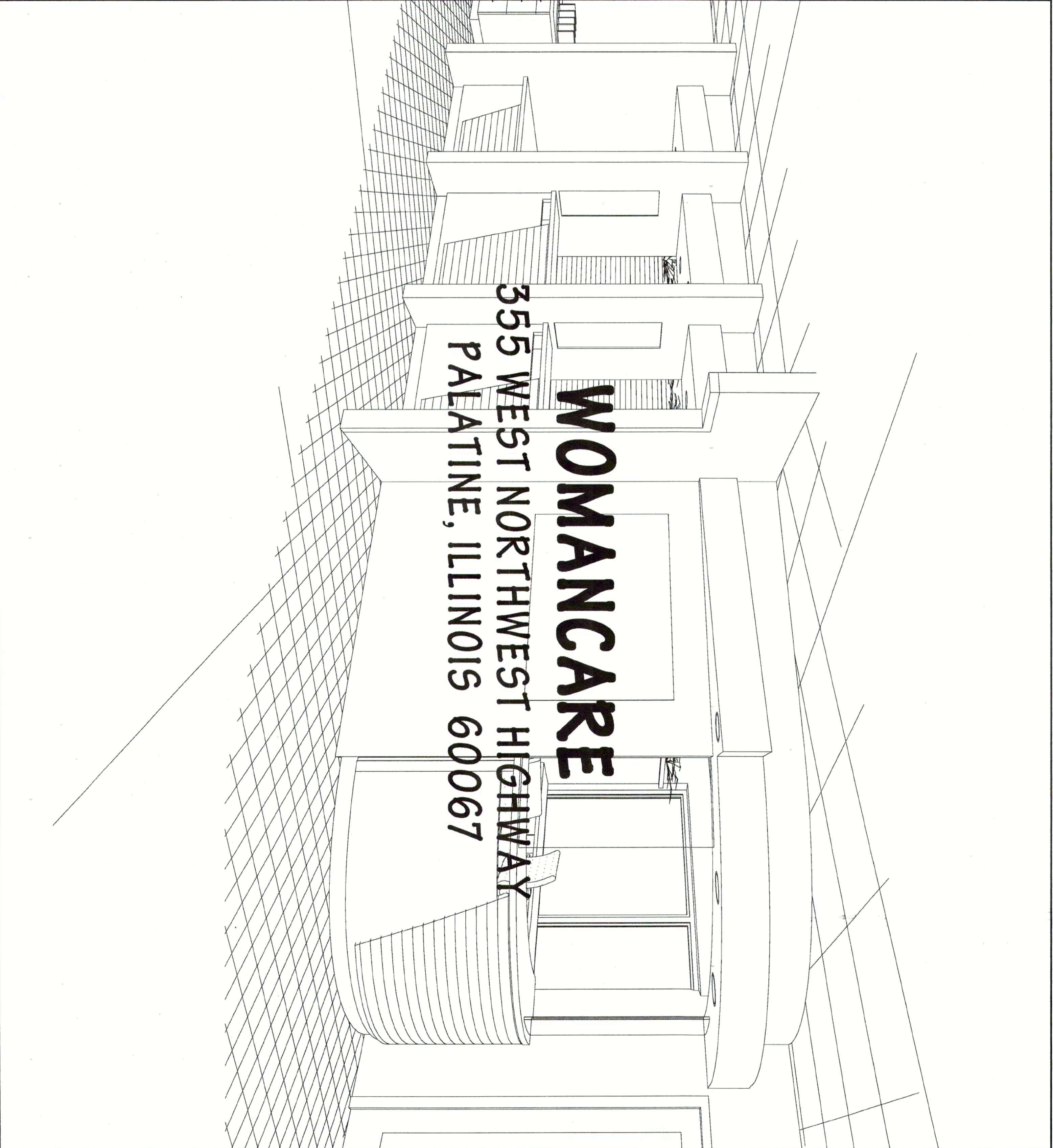
SPECIFICATIONS

1. INTERIOR CABINETRY - SUPPLY AND INSTALL ALL MISCELLANEOUS BLOCKING FOR THE ANCHORAGE OF WALL ATTACHED ITEMS, INCLUDING BUT NOT LIMITED TO COUNTERTOP CABINETS, SHELVING, TOILET ACCESSORIES, MEDICAL EQUIPMENT, ETC. REMOVE ALL WOOD BLOCKING TO BE RE-CREATED.
2. MILLWORK - SEE SEPARATE DRAWING SET FOR FINISHES AND CABINETRY REQUIREMENTS.
3. SEALANTS - INSTALL MATERIALS AND SYSTEMS IN PROPER RELATION WITH ADJACENT CONSTRUCTION AND WITH UNIFORM APPEARANCE. INSTALL IN ACCORDANCE WITH MANUFACTURER'S INSTRUCTIONS AND APPROVE SUBMITTALS. COORDINATE WITH WORK OF OTHER SECTIONS. CLEAN AND PRIME JOINTS, AND INSTALL BOND BREAKERS. SEALANTS IN COLORS AS SELECTED FROM MANUFACTURER'S STANDARDS. SUBMIT SAMPLES FOR PRIOR APPROVAL.
4. HOLLOW METAL FRAMES - PROVIDE FRAME AND AS SCHEDULED IN GAUGE STEEL RUBBER Gaskets. FLOOR CLIPS, THREE ANCHORS PER JAMB, FRAMES FINISH AND RUBBER Gaskets.
5. NEW WOOD DOORS - WOOD DOORS AS SCHEDULED ARE TO BE AN PREMIUM GRADE, FLUSH, SOLID PLYWOOD DOORS. MATCH EXISTING LIKE AND KIND. SUBMIT SAMPLES FOR APPROVAL.
6. EXISTING WOOD DOORS - ARE TO BE REFINISHED AS REQUIRED TO REMOVE ANY IMPERFECTIONS, MAKE LIKE NEW.
7. DOOR HARDWARE REQUIREMENTS - PROVIDE ALL HARDWARE TO DOORS AS SCHEDULED IN SPECIFICATIONS. HARDWARE TO BE MATCHED TO EXISTING HARDWARE. SUBMIT HARDWARE SCHEDULE AND FINISH SAMPLES FOR PRIOR APPROVAL. FINISH OF ALL HARDWARE: USED BRUSHED CHROME.
8. POOR HARDWARE - MATCH LIKE AND KIND WITH NEW FINISH. MINIMUM STANDARDS AS FOLLOWS:
LATCH SETS: "SCHLAGE" D - SERIES CYLINDRICAL LOCKS WITH LEVER HANDLE
HINGES: "STRATEGY" 179S-D-10224-112"
ALL HARDWARE HINGES: STAINLESS STEEL
PULLS: "STRATEGY" 179S-D-10224-112"
CLOSERS: "LHC" MC SERIES WALL 51079S, "51" W-50.
9. CABINET HARDWARE - SEE SEPARATE DRAWING SET FOR FINISHES AND CABINETRY REQUIREMENTS.
10. INTERIOR GLAZING - PROVIDE 5/16" THICK, 3" FRAME YAKA PANELS AS PROVIDED BY 3-FORM, INC. PATTERN KAM1 - MATCH COLOR, CLEAN, FRONT FINISH, PATINA BACK FINISH. PATINA TO ALL WINDOW LITES AS INDICATED. SUBMIT SAMPLES SUPPLIED BY OTHERS INSTALLED BY THE GENERAL CONTRACTOR.
11. DRYSUM - PROVIDE DRYSUM WORK AS SHOWN. GYPSUM BOARD: 5/8" THICK U.S. RESISTIVE TYPE AT ALL WEAT AREAS. STEEL 51079S: 1965 515 WITH 255 RUNNERS. ADJUSTABLE INSULATION: 2" THICK 055 THE MAXIMUM 5000 AT WINDOW AND DOOR JOINTS ARE TO BE TYPED, AND FINISHED WITH TWO COATS OF JOINT COMPOUND. EACH COAT SAMPLE.
12. CERAMIC TILE - SEE SEPARATE DRAWING SET FOR FINISHES AND CABINETRY REQUIREMENTS.
13. TYPE "T" - EXISTING 12 X 24 ACQUISITIONAL CEILING. EXISTING GRID AND TILES TO REMAIN. REPLACE DAMAGED TILES WITH SALVAGED TILES. REPAIR GRID WHERE DAMAGED. INDICATED.
14. TYPE "T" - 2 X 2 ACQUISITIONAL CEILING. INSTALL NEW 2 X 2 TILES IN EXIST GRID TO AREAS INDICATED.
GRID: EXISTING GRID TO REMAIN. REPAIR WHERE DAMAGED PAINT
COLOR - WHITE
THE NEW "AMSTRONG" - FINE LOOK 4200 SQUARE, 2' X 2' 5/8", # 2261
COLOR - WHITE
THE NEW "AMSTRONG" - FINE LOOK 4200 SQUARE, 2' X 2' 5/8", # 2261
COLOR - WHITE
THE NEW "AMSTRONG" - FINE LOOK 4200 SQUARE, 2' X 2' 5/8", # 2261
COLOR - WHITE
THE NEW "AMSTRONG" - FINE LOOK 4200 SQUARE, 2' X 2' 5/8", # 2261
COLOR - WHITE
THE NEW "AMSTRONG" - FINE LOOK 4200 SQUARE, 2' X 2' 5/8", # 2261
COLOR - WHITE
THE NEW "AMSTRONG" - FINE LOOK 4200 SQUARE, 2' X 2' 5/8", # 2261
COLOR - WHITE
15. TYPE "S" - NEW 2 X 2 ACQUISITIONAL CEILING. INSTALL NEW 2 X 2 GRID AND TILES TO AREAS INDICATED.
GRID: NEW "AMSTRONG" - "PRELUDE 516" - SERIES 7500 EXPOSED TEE GRID.
COLOR - WHITE
THE NEW "AMSTRONG" - FINE LOOK 4200 SQUARE, 2' X 2' 5/8", # 2261
COLOR - WHITE
THE NEW "AMSTRONG" - FINE LOOK 4200 SQUARE, 2' X 2' 5/8", # 2261
COLOR - WHITE
THE NEW "AMSTRONG" - FINE LOOK 4200 SQUARE, 2' X 2' 5/8", # 2261
COLOR - WHITE
THE NEW "AMSTRONG" - FINE LOOK 4200 SQUARE, 2' X 2' 5/8", # 2261
COLOR - WHITE
THE NEW "AMSTRONG" - FINE LOOK 4200 SQUARE, 2' X 2' 5/8", # 2261
COLOR - WHITE
16. TYPE "A" - 2 X 4 ACQUISITIONAL CEILING. INSTALL NEW 2 X 4 GRID AND TILES TO AREAS INDICATED.
GRID: NEW GRID TO MATCH EXISTING. PAINT TO MATCH PAINTED EXISTING GRID.
COLOR - WHITE
THE NEW "AMSTRONG" - FINE LOOK 4200 SQUARE, 2' X 2' 5/8", # 2261
COLOR - WHITE
THE NEW "AMSTRONG" - FINE LOOK 4200 SQUARE, 2' X 2' 5/8", # 2261
COLOR - WHITE
THE NEW "AMSTRONG" - FINE LOOK 4200 SQUARE, 2' X 2' 5/8", # 2261
COLOR - WHITE
THE NEW "AMSTRONG" - FINE LOOK 4200 SQUARE, 2' X 2' 5/8", # 2261
COLOR - WHITE
THE NEW "AMSTRONG" - FINE LOOK 4200 SQUARE, 2' X 2' 5/8", # 2261
COLOR - WHITE
17. VINYL COMPOSITION TILE - SEE SEPARATE DRAWING SET FOR FINISHES AND CABINETRY REQUIREMENTS.
18. BASE - SEE SEPARATE DRAWING SET FOR FINISHES AND CABINETRY REQUIREMENTS.
19. CARPET - SEE SEPARATE DRAWING SET FOR FINISHES AND CABINETRY REQUIREMENTS.
20. INTERIOR PAINTING - SEE SEPARATE DRAWING SET FOR FINISHES AND CABINETRY REQUIREMENTS.
21. VINYL WALL COVERING - SEE SEPARATE DRAWING SET FOR FINISHES AND CABINETRY REQUIREMENTS.
22. SIGNAGE - PROVIDE BY OTHERS.
23. TOILET ACCESSORIES
RECESSED TOILET PAPER HOLDER - "ROBRICK" CONTURA 1-6677
1 1/2" DIA. GRAB BARS, IN LENGTHS SHOWN - "ROBRICK" P-6406 SERIES
TOILET SEAT - "ROBRICK" CONTURA 1-6677
PAPER TOWEL DISPENSER - "ROBRICK" CONTURA 1-6677
SOAP DISPENSER - "DIAL CORPORATION" MODEL # 9222
24. FIRE PROTECTION - SEE SEPARATE DRAWING SET FOR FIRE PROTECTION GENERAL NOTES, FINISHES AND EQUIPMENT SCHEDULES AND SPECIFICATIONS.
25. PLUMBING - SEE SEPARATE DRAWING SET FOR PLUMBING DRAWINGS AND SPECIFICATIONS. SEE DEVICE LOCATION PLAN A-3 FOR ADDITIONAL INFORMATION. SUBMIT DRAWINGS AND CATALOG CUTS FOR REVIEW AND APPROVAL.
26. HVAC - SEE SEPARATE DRAWING SET FOR MECHANICAL ENGINEERING DRAWINGS AND SPECIFICATIONS. SEE DEVICE LOCATION PLAN A-3 FOR ADDITIONAL INFORMATION. SUBMIT DRAWINGS AND CATALOG CUTS FOR REVIEW AND APPROVAL.
27. ELECTRICAL AND LIGHTING - SEE SEPARATE DRAWING SET FOR ELECTRICAL AND LIGHTING DRAWINGS AND SPECIFICATIONS. SEE DEVICE LOCATION PLAN A-3 FOR ADDITIONAL INFORMATION. SUBMIT DRAWINGS AND CATALOG CUTS FOR REVIEW AND APPROVAL.



INDEX TO DRAWINGS

A-1	GENERAL NOTES & SPECIFICATIONS
A-2	DEMOLITION FLOOR PLAN
A-3	ARCHITECTURAL FLOOR PLAN
A-4	MEDICAL FACILITIES PLAN
A-5	DEVICE LOCATION PLAN
A-6	ARCHITECTURAL REFLECTED CEILING PLAN
A-7	INTERIOR DETAILS



NO.	DATE	ISSUED FOR:
06/17/04		PERMIT & PRICING

BURROWS DESIGN GROUP
HEALTHCARE DESIGN DIVISION
230 W. PALATINE ROAD • WHEELING, IL 60090 • 847-541-5145 • FAX 847-537-7323
INNOVATIVE MEDICAL ENVIRONMENTS

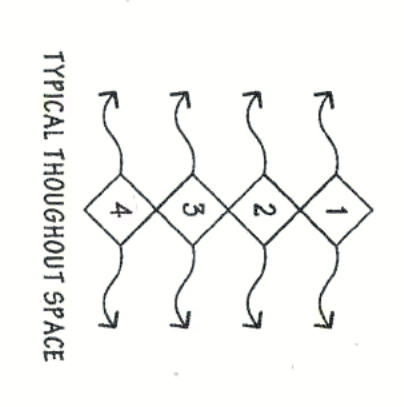
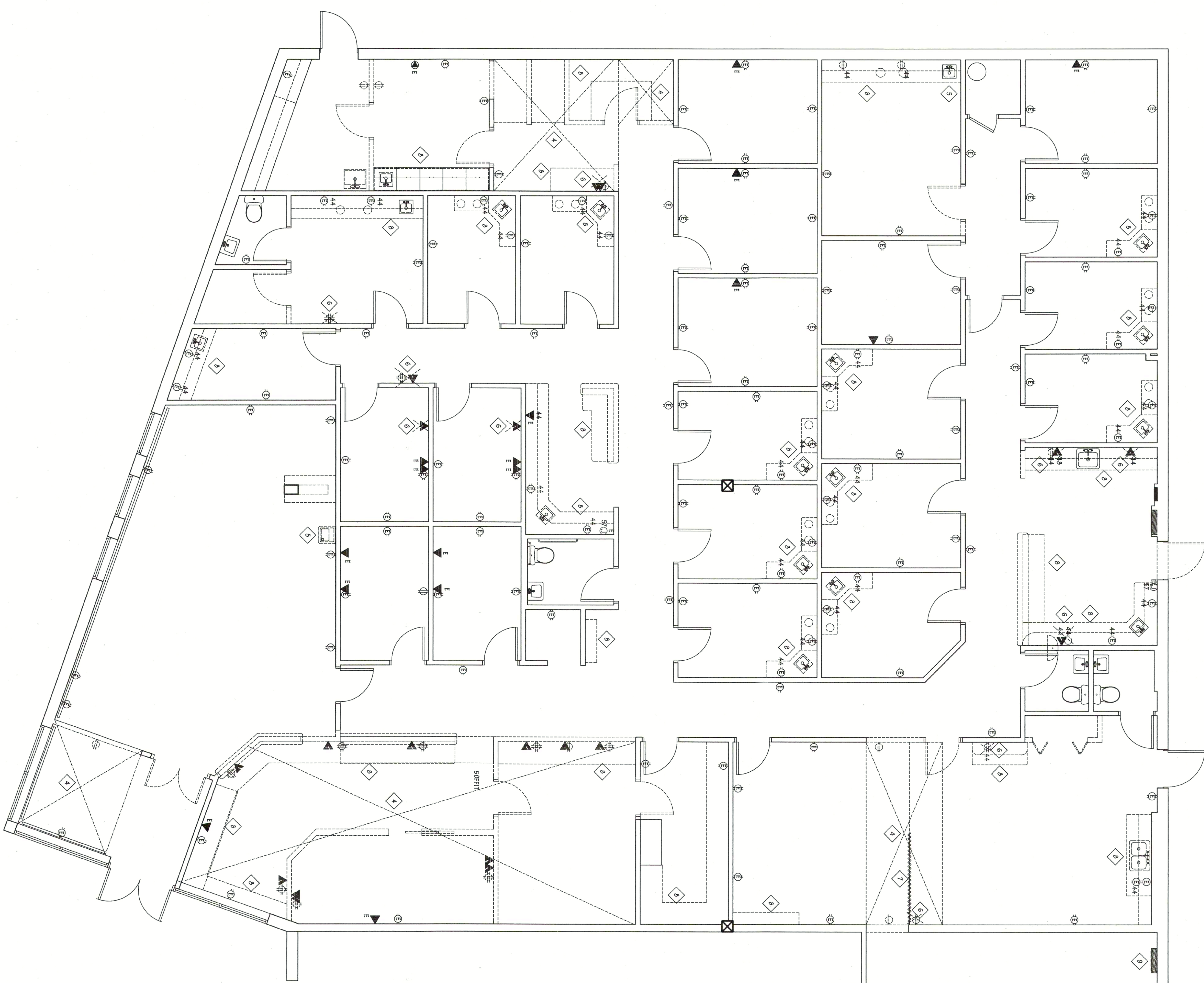
IL DESIGN FIRM # 184-002391
Arcotech
ARCHITECTURE
Arcotech Corporation
3437 South Grove Avenue, Bensenville, IL 60042

WOMANCARE
355 WEST NORTHWEST HIGHWAY
PALATINE, ILLINOIS 60067

DATE: 06/17/04
SCALE: NTS
SHEET NUMBER: 4682
A-01

ISSUED FOR PERMIT & PRICING: 06/17/04

GENERAL NOTES & SPECIFICATIONS



DEMOLITION GENERAL NOTES

1. CONTACT THE OFFICE OF THE BUILDING FOR RULES GOVERNING THE TIME AND TRASH CONTAINERS AND PICK-UP. ALL DEBRIS IS TO BE REMOVED FROM THE JOBSITE THE DAY AFTER THE DEMOLITION IS COMPLETED. A BROWN-CLAYED CONDUIT SHALL REMAIN, ETC. WHILE DEMOLITION IS IN PROGRESS.
2. PROVIDE TEMPORARY WALLS AS REQUIRED TO ENCLOSE AND SAFEGUARD FOR SAFETY. IN ORDER TO LOCALIZE AND MINIMIZE DUST FROM DEMOLITION OPERATIONS.
3. PROTECT BASE BUILDING CONSTRUCTION AND ALL EXISTING CONSTRUCTION TO REMAIN SUCH AS FLOORS, WALLS, ELECTRICAL CONDUITS, AND OTHER CONSTRUCTION MEANS TO REMAIN, ETC. WHILE DEMOLITION IS IN PROGRESS.
4. ALL EXISTING WALLS TO BE REMOVED ARE TO BE REMOVED IN THEIR ENTIRETY. THE REMOVAL OF WALLS AND CONSTRUCTION FINISHES SHALL BE AS INDICATED IN THIS PLAN. ALL EXISTING WALLS AND CONSTRUCTION FINISHES SHALL BE REMOVED IN THEIR ENTIRETY. DISCONNECTED, THEY SHALL BE CAPPED AT THE JWP CONNECTION.
5. ALL EXISTING CONDENS, DRYERS, PUMPS, ETC. ARE TO BE REMOVED. WHERE WATER LINES TO ELECTRICAL WATER COILERS, SINKS, OR WELDING MACHINES ARE DISCONNECTED, THEY SHALL BE CAPPED AT THE JWP CONNECTION.
6. ALL LIGHT FIXTURES, WALL OUTLETS, SWITCHES, MISCELLANEOUS ELECTRICAL ITEMS AND OTHER ELECTRICAL ITEMS ARE TO BE REMOVED. ALL ELECTRICAL ITEMS ARE TO BE REMOVED. ALL ELECTRICAL ITEMS ARE TO BE REMOVED. ALL ELECTRICAL ITEMS ARE TO BE REMOVED.
7. REMOVAL OF ANY MATERIALS CONTAINING ASBESTOS OR ASSOCIATED ASBESTOS MATERIALS ARE TO BE REMOVED BY OTHERS. AFTER TESTING THE DEMOLITION CONTRACTOR IS TO REMOVE REMAINING MATERIALS.

DEMOLITION KEY NOTES

TYPICAL FOR ENTIRE SPACE

1. REMOVE ALL EXISTING FLOOR AND WALL FINISHES TO AREAS INDICATED.
2. REMOVE ALL EXISTING PARTITIONS, DOORS AND FRAMES, AND IN WALL ELECTRICAL DEVICES AS INDICATED.
3. REMOVE ALL EXISTING FINISHES INCLUDING ALL FLOORING AND WALL FINISHES THROUGHOUT SPACE AS INDICATED.
4. REMOVE CEILING GRID, TILES AND LIGHT FIXTURES TO SPACE AS INDICATED. SEE REFLECTED CEILING PLAN FOR EXTENT OF WORK.
5. REMOVE ALL EXISTING PLUMBING FIXTURES AND PIPING, WHERE INDICATED. CAP OFF AT SOURCE. PATCH WALLS AND FLOOR AS REQUIRED.
6. REMOVE ALL EXISTING SMALL ELECTRICAL DEVICES IN REMAINING PARTITIONS. PATCH WALL AS REQUIRED.
7. REMOVE EXISTING FOLDING PARTITION.
8. REMOVE EXISTING BAGS & UPPER CABINETRY. PATCH WALLS AS REQUIRED. SINK LOCATIONS ARE TO REMAIN EXCEPT WHERE INDICATED OTHERWISE.
9. RELOCATE EXISTING ELECTRICAL PANEL.

DEMOLITION PLAN NOTES:

EXISTING PARTITIONS TO REMAIN

EXISTING PARTITIONS AND OTHER ITEMS TO BE REMOVED

INDICATES DEMOLITION KEY NOTES

EXISTING ELECTRICAL DEVICE TO REMAIN

EXISTING DATA OUTLET TO REMAIN

WOMANCARE
 355 WEST NORTHWEST HIGHWAY
 PALATINE, ILLINOIS 60067

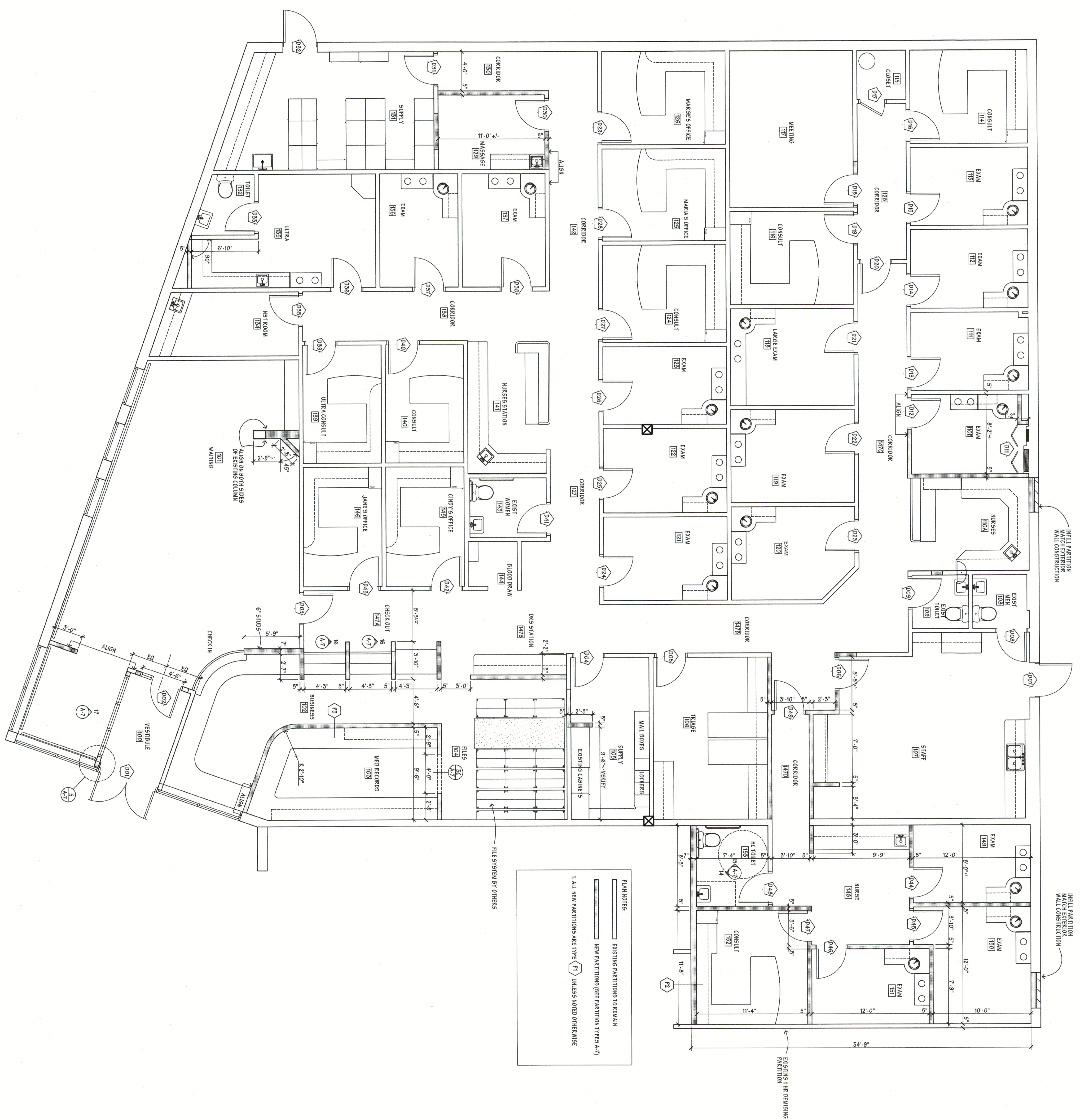
DEMOLITION FLOOR PLAN

Arcotech
 A R C O T E C H
 Arcotech Corporation
 3437 South Grove Avenue, Berwyn, IL 60402

BURROWS DESIGN GROUP
 HEALTHCARE DESIGN DIVISION
 230 W. PALATINE ROAD • WHEELING, IL 60090 • 847-541-5145 • FAX 847-537-7223
 INNOVATIVE MEDICAL ENVIRONMENTS

NO.	DATE	ISSUED FOR:
	06/17/04	PERMIT & PRICING

SCALE: 1/4" = 1'-0"
 SHEET DATE: 06/17/04
 SHEET NUMBER: A.02



PLAN NOTES:

- EXISTING PARTITIONS TO REMAIN
- ▬ NEW PARTITIONS (SEE PARTITION TYPES A-J)
- 1. ALL NEW PARTITIONS ARE TYPE (F1) UNLESS NOTED OTHERWISE

FILE SYSTEM BY OTHERS

WOMANCARE
 355 WEST NORTHWEST HIGHWAY
 PALATINE, ILLINOIS 60067

4692
 1/4" = 1'-0"
 06/17/04
 SHEET NUMBER

ARCHITECTURAL FLOOR PLAN

Arcotech
 A • R • C • H • I • T • E • C • T • U • R • E
 Arcotech Corporation
 3437 South Grove Avenue, Bensenville, IL 60042

BURROWS DESIGN GROUP
 HEALTHCARE DESIGN DIVISION
 230 W. PALATINE ROAD • WHEELING, IL 60090 • 847-541-5145 • FAX 847-537-7323
 INNOVATIVE MEDICAL ENVIRONMENTS

NO.	DATE	ISSUED FOR:
06/17/04	PERMIT & PRICING	



WOMANCARE
 355 WEST NORTHWEST HIGHWAY
 PALATINE, ILLINOIS 60067

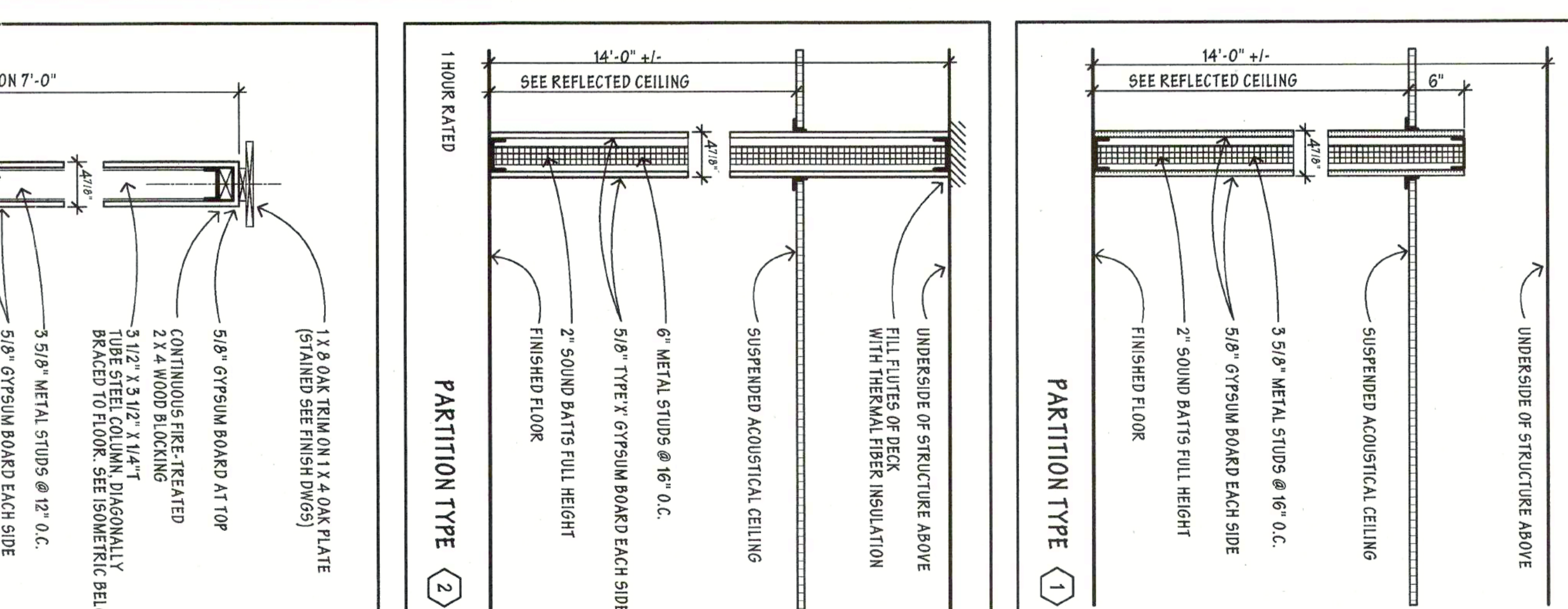
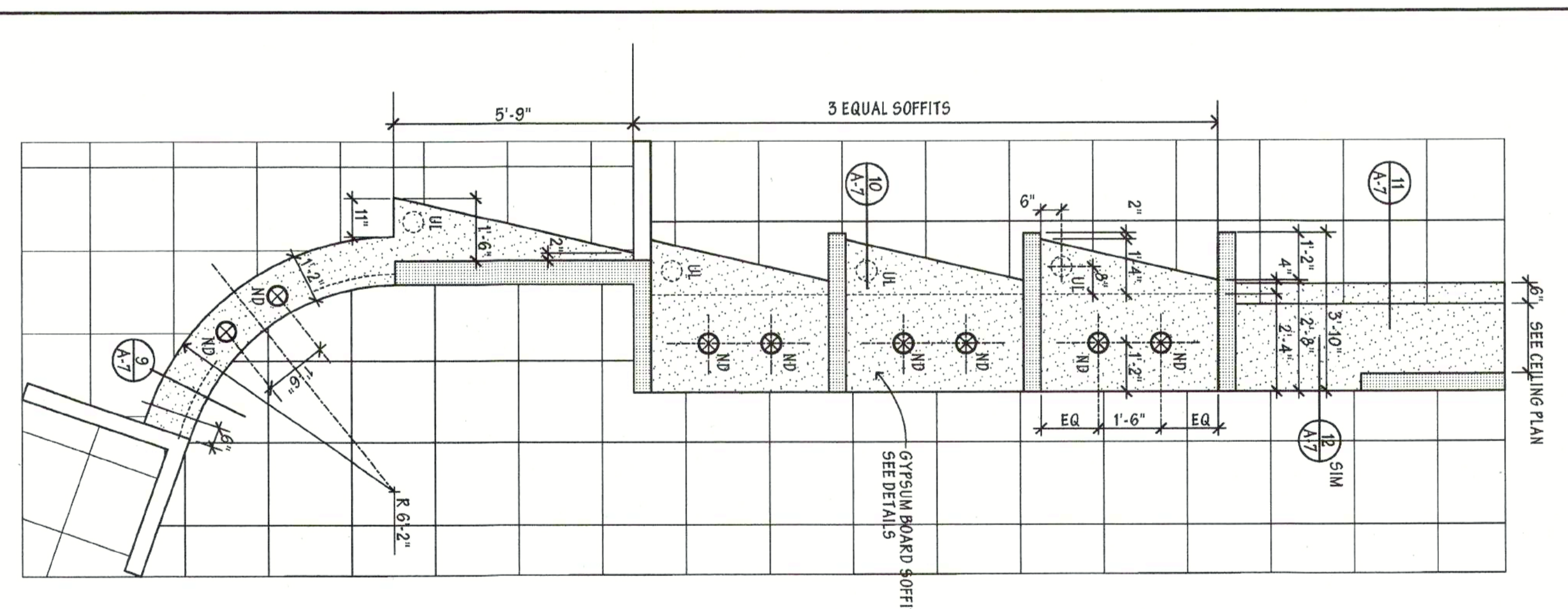
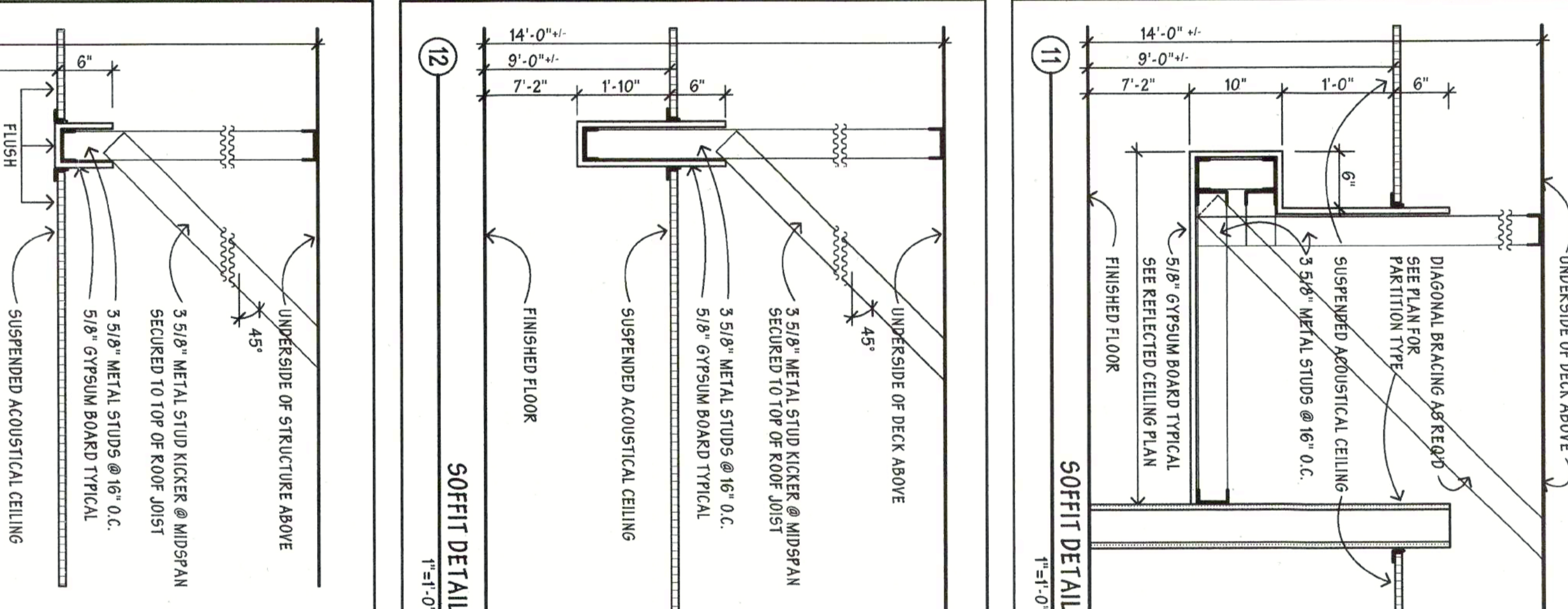
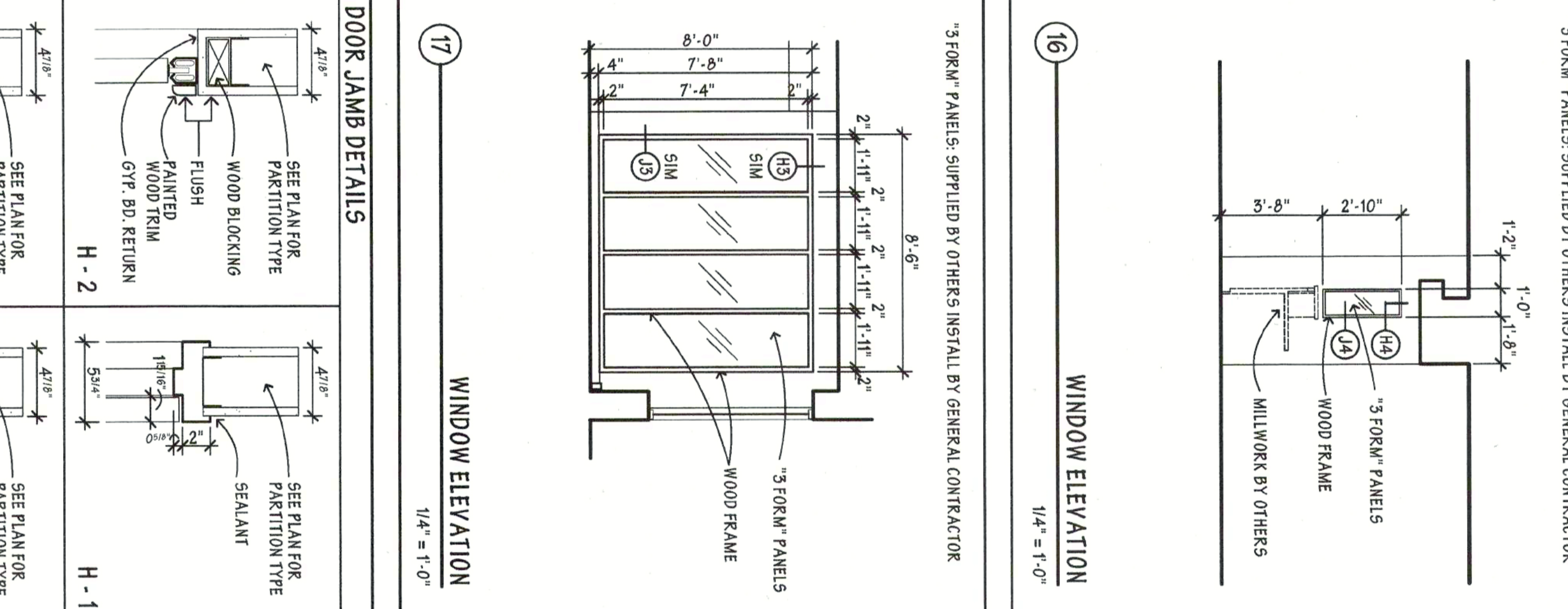
MEDICAL FACILITIES PLAN



NO.	DATE	ISSUED FOR:
06/17/04		PERMIT & PRICING

SCALE: 1/4" = 1'-0"
 SHEET NO: 06/17/04
 SHEET NUMBER: A-4

DOOR SCHEDULE		DOOR		FRAME		HOME		LABEL		REMARKS
NO.	LOCATION	TYPE	SIZE	MAT	MAT	HEAD	JAMB	SILL	SET	
D-01	W.C. RESTROOM	-	EXISTING	-	-	-	-	-	1	SEE NOTE #2
D-02	W.C. RESTROOM	A	5'-0" TYP. X 3'-6" TYP.	WD	WD	H-3	J-2	S-1	2	W/SHOULDER - SPECIAL GLASSING
D-03	NO. WAITING	-	EXISTING	-	-	-	-	-	2	SEE NOTE #3
D-04	NO. SHOWER	-	EXISTING	-	-	-	-	-	3	SEE NOTE #3
D-05	NO. SHOWER	-	EXISTING	-	-	-	-	-	4	SEE NOTE #3
D-06	NO. SHOWER	B	5'-0" TYP. X 3'-6" TYP.	WD	HM	H-1	J-1	S-1	5	SEE NOTE #3
D-07	NO. SHOWER	-	EXISTING	-	-	-	-	-	6	SEE NOTE #2
D-08	NO. MEN	-	EXISTING	-	-	-	-	-	7	SEE NOTE #3
D-09	NO. TOILET	-	NOT USED	-	-	-	-	-	8	SEE NOTE #3
D-10	NO. TOILET	-	NOT USED	-	-	-	-	-	9	SEE NOTE #3
D-11	NO. MEN	C	5'-0" TYP. X 3'-6" TYP.	WD	HM	H-2	J-2	S-2	4	SEE NOTE #3
D-12	NO. MEN	B	5'-0" TYP. X 3'-6" TYP.	WD	HM	H-1	J-1	S-1	3	SEE NOTE #3
D-13	WITELAM	-	EXISTING	-	-	-	-	-	3	SEE NOTE #3
D-14	WITELAM	-	EXISTING	-	-	-	-	-	3	SEE NOTE #3
D-15	WITELAM	-	EXISTING	-	-	-	-	-	3	SEE NOTE #3
D-16	WITELAM	-	EXISTING	-	-	-	-	-	3	SEE NOTE #3
D-17	WITELAM	-	EXISTING	-	-	-	-	-	3	SEE NOTE #3
D-18	WITELAM	-	EXISTING	-	-	-	-	-	3	SEE NOTE #3
D-19	WITELAM	-	EXISTING	-	-	-	-	-	3	SEE NOTE #3
D-20	WITELAM	-	EXISTING	-	-	-	-	-	3	SEE NOTE #3
D-21	WITELAM	-	EXISTING	-	-	-	-	-	3	SEE NOTE #3
D-22	WITELAM	-	EXISTING	-	-	-	-	-	3	SEE NOTE #3
D-23	WITELAM	-	EXISTING	-	-	-	-	-	3	SEE NOTE #3
D-24	WITELAM	-	EXISTING	-	-	-	-	-	3	SEE NOTE #3
D-25	WITELAM	-	EXISTING	-	-	-	-	-	3	SEE NOTE #3
D-26	WITELAM	-	EXISTING	-	-	-	-	-	3	SEE NOTE #3
D-27	WITELAM	-	EXISTING	-	-	-	-	-	3	SEE NOTE #3
D-28	WITELAM	-	EXISTING	-	-	-	-	-	3	SEE NOTE #3
D-29	WITELAM	-	EXISTING	-	-	-	-	-	3	SEE NOTE #3
D-30	WITELAM	-	EXISTING	-	-	-	-	-	3	SEE NOTE #3
D-31	WITELAM	-	EXISTING	-	-	-	-	-	3	SEE NOTE #3
D-32	WITELAM	-	EXISTING	-	-	-	-	-	3	SEE NOTE #3
D-33	WITELAM	-	EXISTING	-	-	-	-	-	3	SEE NOTE #3
D-34	WITELAM	-	EXISTING	-	-	-	-	-	3	SEE NOTE #3
D-35	WITELAM	-	EXISTING	-	-	-	-	-	3	SEE NOTE #3
D-36	WITELAM	-	EXISTING	-	-	-	-	-	3	SEE NOTE #3
D-37	WITELAM	-	EXISTING	-	-	-	-	-	3	SEE NOTE #3
D-38	WITELAM	-	EXISTING	-	-	-	-	-	3	SEE NOTE #3
D-39	WITELAM	-	EXISTING	-	-	-	-	-	3	SEE NOTE #3
D-40	WITELAM	-	EXISTING	-	-	-	-	-	3	SEE NOTE #3
D-41	WITELAM	-	EXISTING	-	-	-	-	-	3	SEE NOTE #3
D-42	WITELAM	-	EXISTING	-	-	-	-	-	3	SEE NOTE #3
D-43	WITELAM	-	EXISTING	-	-	-	-	-	3	SEE NOTE #3
D-44	WITELAM	-	EXISTING	-	-	-	-	-	3	SEE NOTE #3
D-45	WITELAM	-	EXISTING	-	-	-	-	-	3	SEE NOTE #3
D-46	WITELAM	-	EXISTING	-	-	-	-	-	3	SEE NOTE #3
D-47	WITELAM	-	EXISTING	-	-	-	-	-	3	SEE NOTE #3
D-48	WITELAM	-	EXISTING	-	-	-	-	-	3	SEE NOTE #3
D-49	WITELAM	-	EXISTING	-	-	-	-	-	3	SEE NOTE #3



HARDWARE NOTES

- HANDLES, PULLS, LATCHES, LOCKS AND OTHER OPERATING DEVICES ON ACCESSIBLE DOORS SHALL HAVE A SHAPE THAT IS EASY TO KEEP AND GRASP WITH ONE HAND AND DOES NOT REQUIRE TIGHT GRASPING, TIGHT PUSHING, OR TWISTING OF THE WRIST TO OPERATE.
- EXISTING HARDWARE TO REMAIN, CLEAN UP, MAKE ALL ADJUSTMENTS REQUIRED FOR CORRECT OPERATION.
- REMOVE EXISTING DOOR, REPLACE ALL HARDWARE AS SCHEDULED REINSTALL DOOR.

