






FOR LEASE

HOMESTEAD OFFICE PROPERTY

377 N Krome Ave, Unit 203, Homestead, FL 33030



PROPERTY FACTS

-  OFFICE
-  UTILITIES INCLUDED
-  LEASE
-  \$1,690 PER MONTH
-  780 SQFT

780^{SF} OFFICE

REMARKS:

Beautifully updated office space ideal for small business, located on prime North Krome Avenue. Unit 203 offers 780 SF, includes electricity, water, and private parking.

HIGHLIGHTS:

- FULL SERVICE BUILDING.
- CLOSE TO NEW CITY HALL.
- IDEAL FOR SMALL BUSINESSES.
- IN DOWNTOWN HOMESTEAD.



CORNERSTONE
INTERNATIONAL REALTY



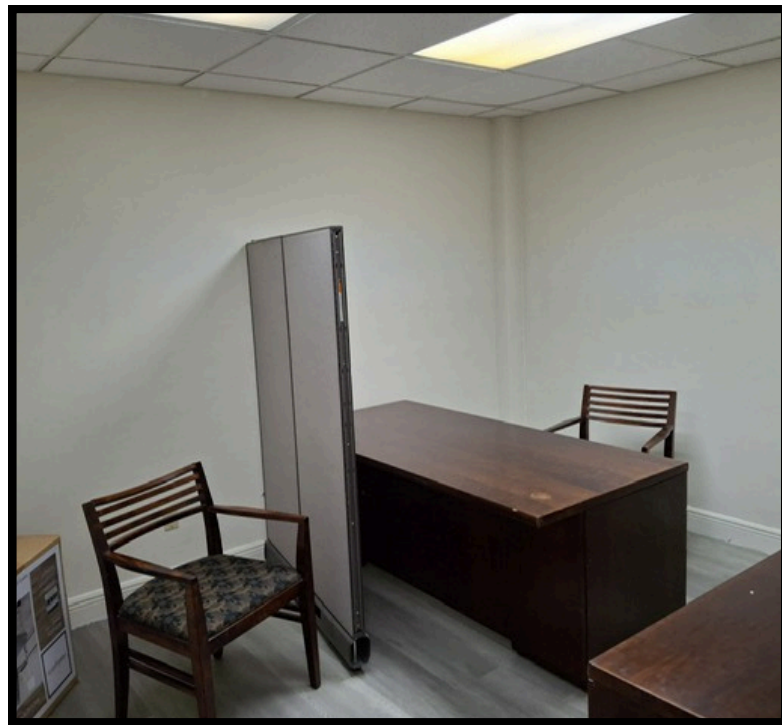
For leasing information, please contact:

DANIEL AVELLANEDA
danielave@cornerstone-ir.com
T: 786-804-2425

INFO@CORNERSTONE-IR.COM
(305) 428-2708
8200 NW 27TH ST #107, DORAL, FL 33122

FOR LEASE

377 N Krome Ave, Suite 203, Homestead, FL 33030



For leasing information, please contact:

DANIEL AVELLANEDA
danielave@cornerstone-ir.com
T: 786-804-2425

INFO@CORNERSTONE-IR.COM
(305) 428-2708
8200 NW 27TH ST #107, DORAL, FL 33122



CORNERSTONE
INTERNATIONAL REALTY



INDUSTRIAL



OFFICE



RETAIL



MULTIFAMILY



DEVELOPMENT



HOTEL