



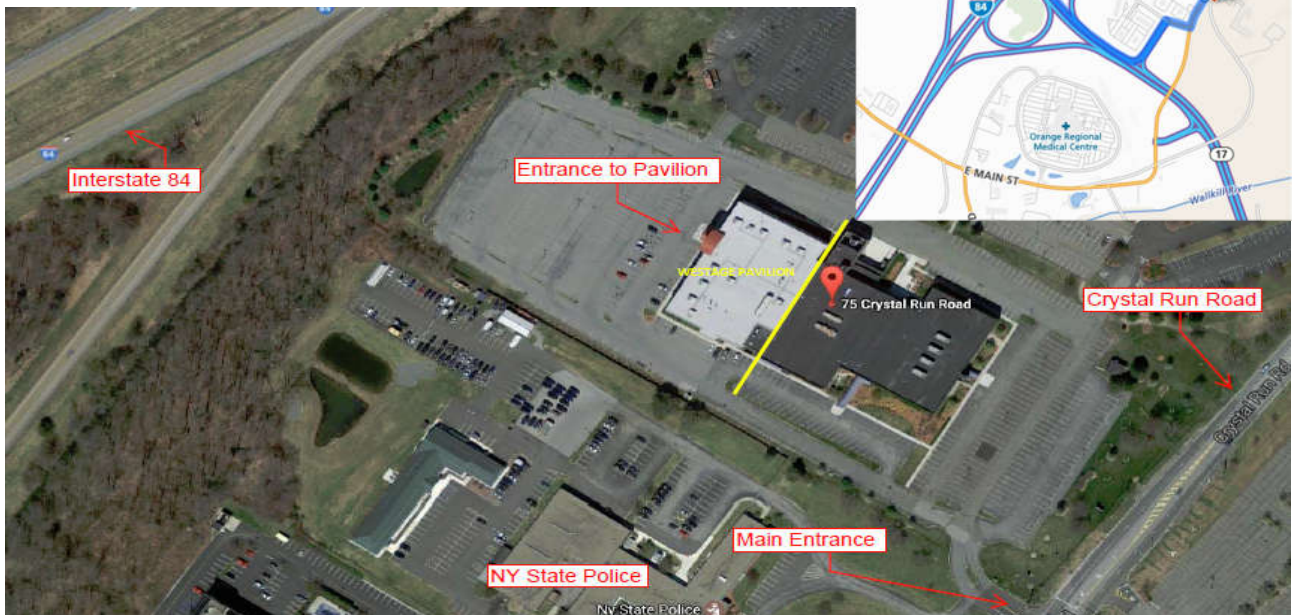
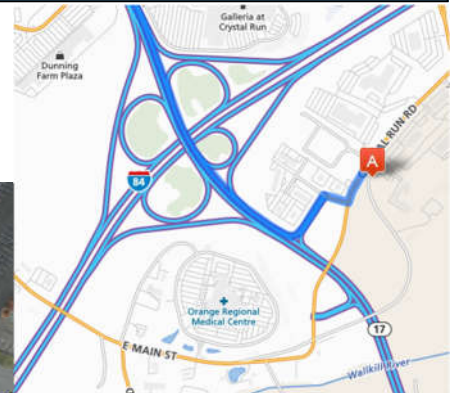
HEALTHCARE REAL ESTATE DEVELOPMENT



## Westage Pavilion

75 Crystal Run Road, Middletown, NY 10941

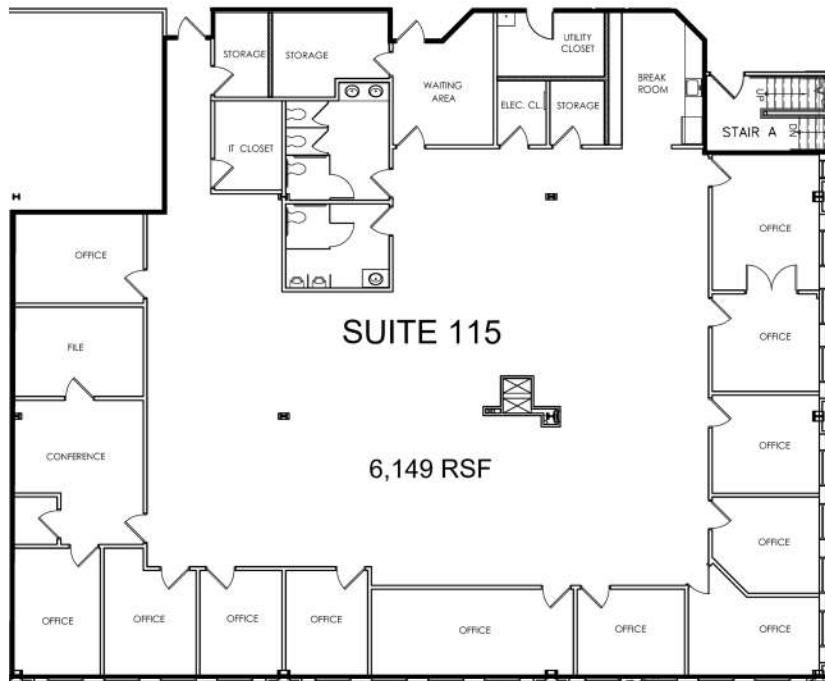
Class "A" Medical Office Space  
Available for Lease Immediately!



Westage Management, LLC  
200 Westage Business Center Drive, Suite 120  
Fishkill, NY

Phone: 845-897-3800  
E-mail: [info@westage.com](mailto:info@westage.com)  
WESTAGE.COM

# Westage Pavilion



75 CRYSTAL RUN ROAD

- 6,149 Rentable SQ FT
- Sub-dividable
- Class A Space
- Professionally Managed Property
- 1.2 Miles from Orange Regional Medical Center

