

# CBRE



## 25 Northfield Drive

Waterloo, ON

12,500 Sq. Ft.

Of Industrial Space For Lease



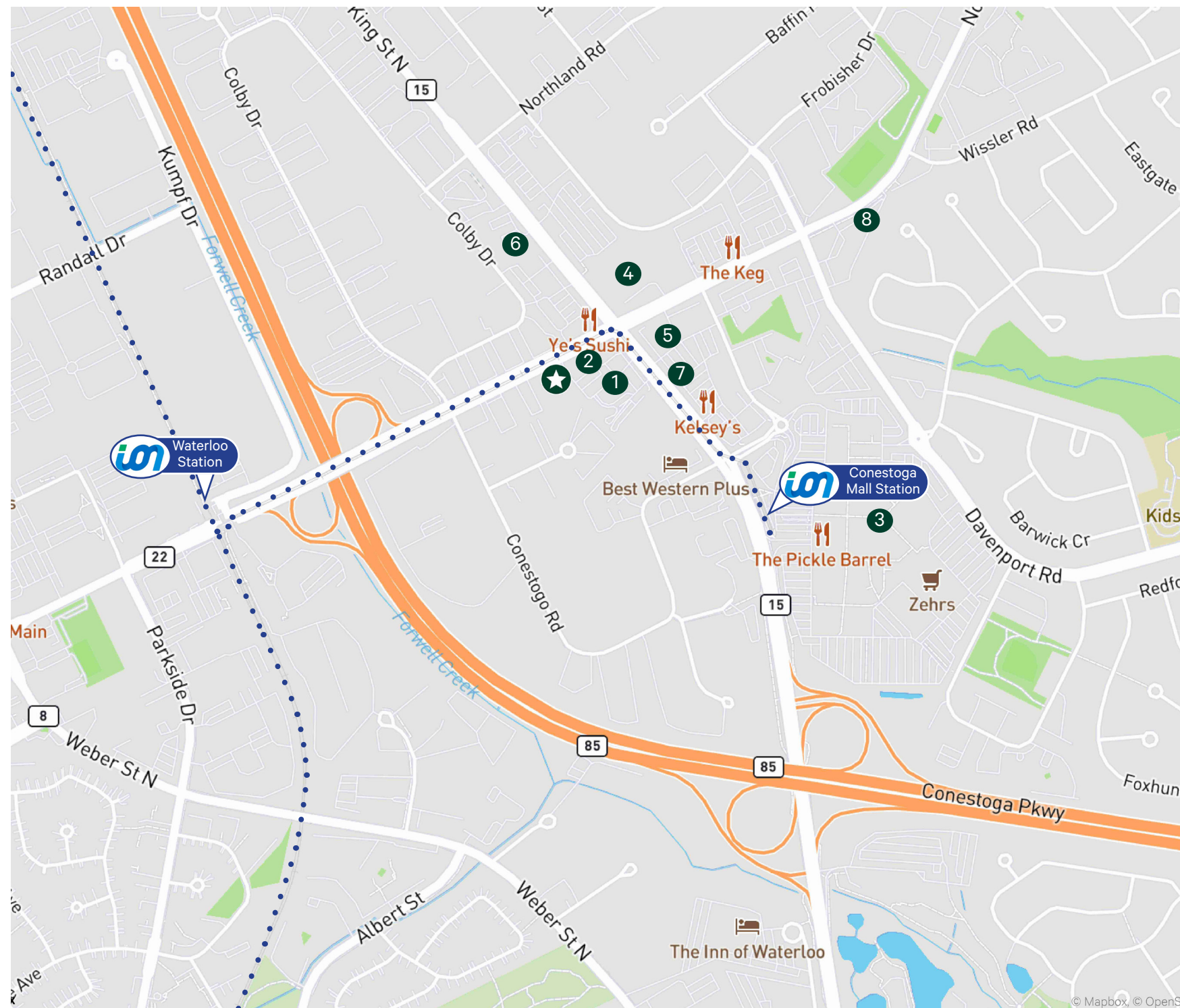
# 25 Northfield Dr W

Approximately 12,500 square feet of industrial space ready for immediate occupancy in prominent location in Waterloo. Numerous amenities within walking distance, including restaurants, grocery stores, and shopping. Two minute drive to Conestoga Mall, Waterloo's premier shopping destination. Conveniently located near an LRT station and just minutes from Highway 7/8. Features a clear height of 10 feet and four drive-in doors.

## Property Details

Size	12,500 Sq. Ft.
Net Rent	\$15.00 Per Sq. Ft.
Additional Rent	\$5.00 per Sq. Ft.
Loading	4 Drive-In Doors
Clear Height	10 Ft.
Power	200 amps / 550 Volts
Zoning	E2-27

# Neighbourhood Overview



## Demographics



**Total Population**  
426,022



**Labour Force**  
240,807



**Median Age**  
35.1



**Average Household Income**  
\$122,620



**Transit Score**  
63



**Walk Score**  
54

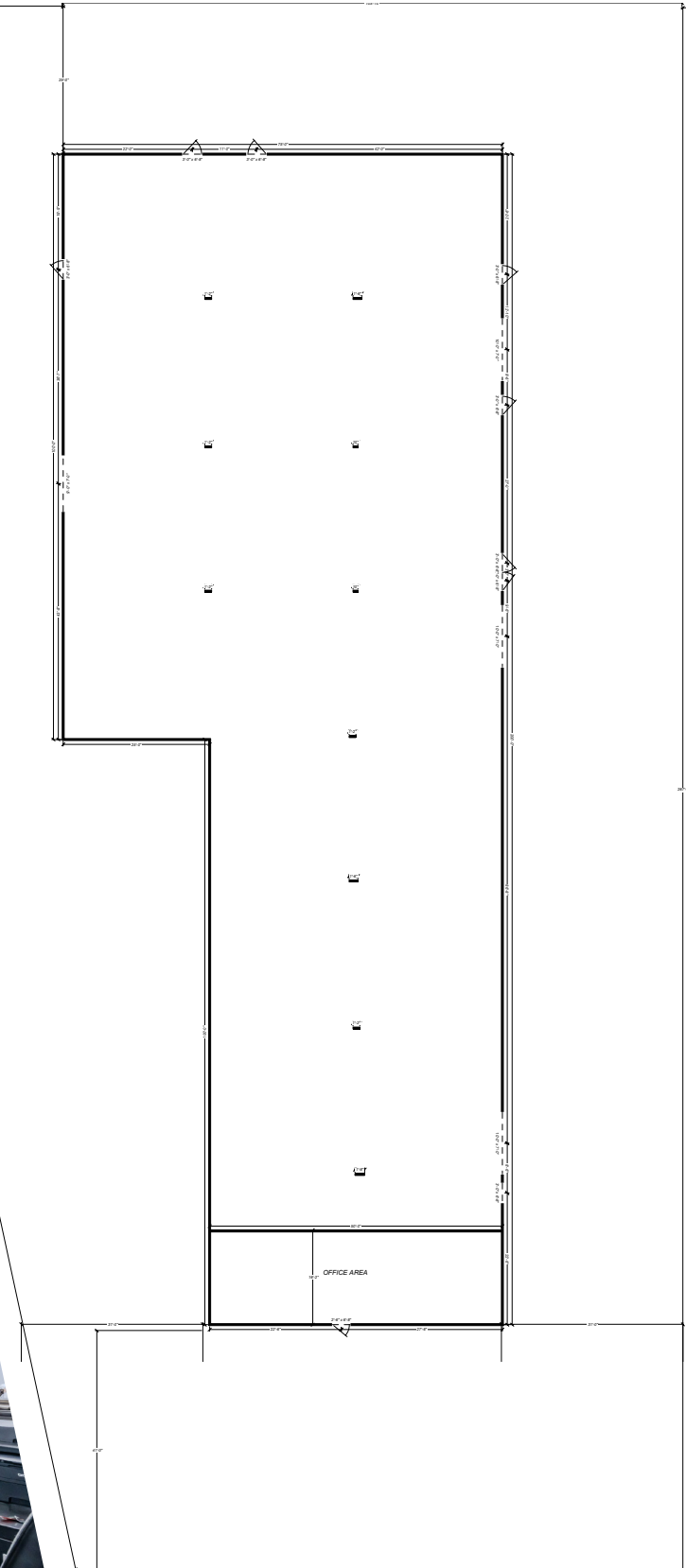
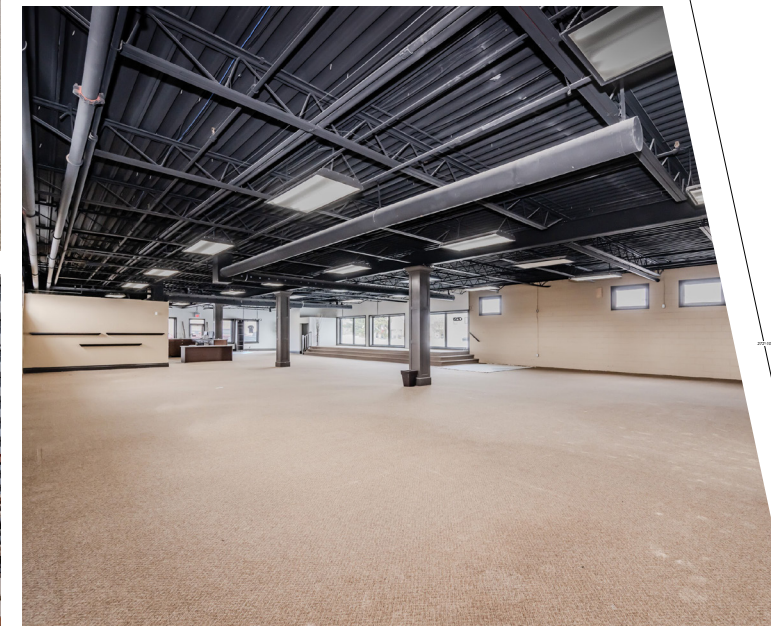


**Bike Score**  
54

## Amenities

- 1 Tim Horton's
- 2 LCBO
- 3 Conestoga Mall
- 4 Home Depot
- 5 Best Buy
- 6 Boston Pizza
- 7 McDonald's

# Floor Plan





# CBRE

## Contact Us

**Todd Cooney\*\***  
Senior Vice President  
519 340 2315  
todd.cooney@cbre.com

**Dean Mariani\***  
Associate Vice President  
519 340 2308  
dean.mariani@cbre.com

**Jessica Kouleas\***  
Sales Representative  
519 340 2328  
jessica.kouleas@cbre.com

CBRE Limited, Real Estate Brokerage | 72 Victoria Street S | Suite 200 | Kitchener, ON | N2G 4Y9 | [www.cbre.ca](http://www.cbre.ca) | \*Sales Representative, \*\*Broker

This disclaimer shall apply to CBRE Limited, Real Estate Brokerage, and to all other divisions of the Corporation; to include all employees and independent contractors ("CBRE"). The information set out herein, including, without limitation, any projections, images, opinions, assumptions and estimates obtained from third parties (the "Information") has not been verified by CBRE, and CBRE does not represent, warrant or guarantee the accuracy, correctness and completeness of the Information. CBRE does not accept or assume any responsibility or liability, direct or consequential, for the Information or the recipient's reliance upon the Information. The recipient of the Information should take such steps as the recipient may deem necessary to verify the Information prior to placing any reliance upon the Information. The Information may change and any property described in the Information may be withdrawn from the market at any time without notice or obligation to the recipient from CBRE. CBRE and the CBRE logo are the service marks of CBRE Limited and/or its affiliated or related companies in other countries. All other marks displayed on this document are the property of their respective owners. All Rights Reserved.