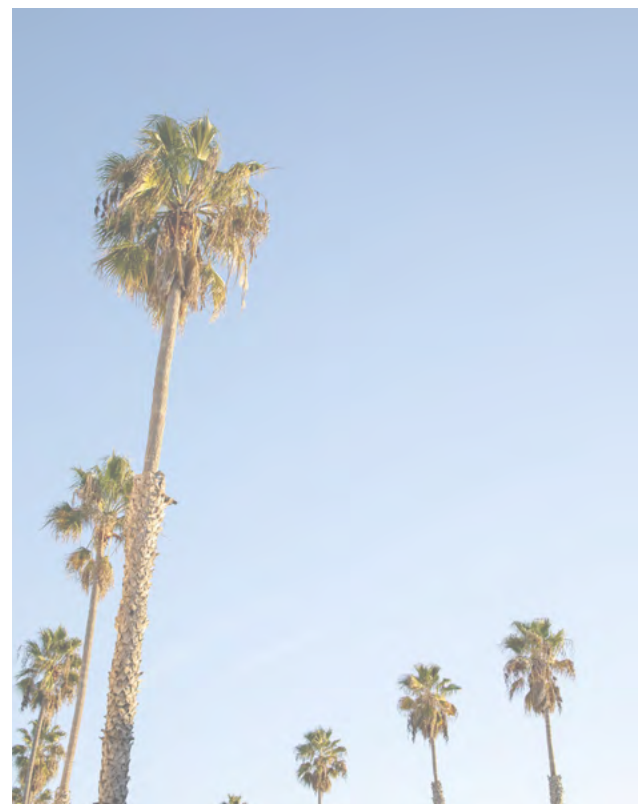


LAGOON

2110 S COAST HIGHWAY | OCEANSIDE



For Lease

Coastal Office | South Oceanside

±984 - 2,880 SF





Where Mid-Century Cool Meets Coastal Views

This 15,000 SF mixed-use destination overlooking the Buena Vista Lagoon features 7,000 SF of activated retail and 8,000 SF of creative office space, wrapped in a sleek Japanese-style wood slat facade.

The Property

\$3.25 PSF, NNN

Asking Rate

2110 S Coast Hwy

Oceanside, CA 92054

±984 - 2,880 SF

Available Space

Office

Space Type



Suite H/I/J
Available Now

Suite L
Available Now

Suite O
Available Now

Prime South Oceanside location with panoramic views of the Buena Vista Lagoon and Pacific Ocean

Suite features open space, kitchenette, two private offices, and large sliding doors to private balcony

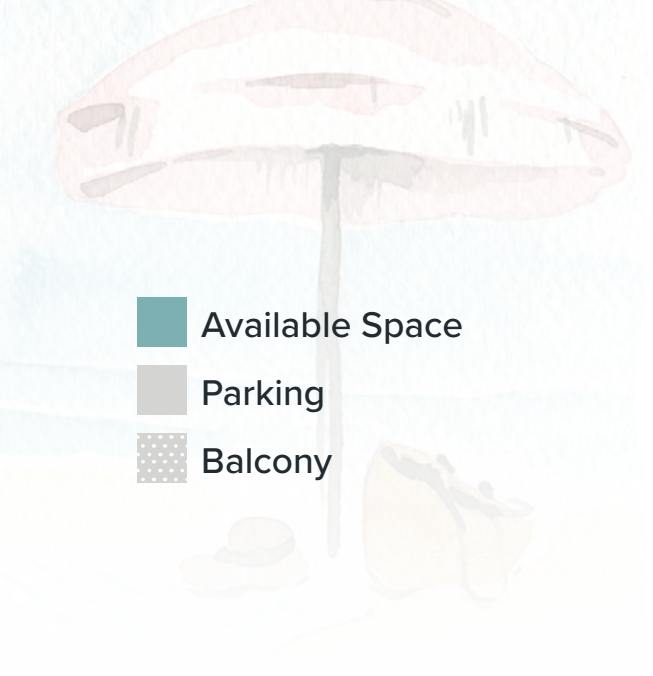
Fully renovated interior and exterior, featuring a timeless design with high-quality materials and modern finishes

Includes ample on-site parking and shared common area restrooms

Dynamic and vibrant surrounding neighborhood with walkability to South Oceanside and Carlsbad Village

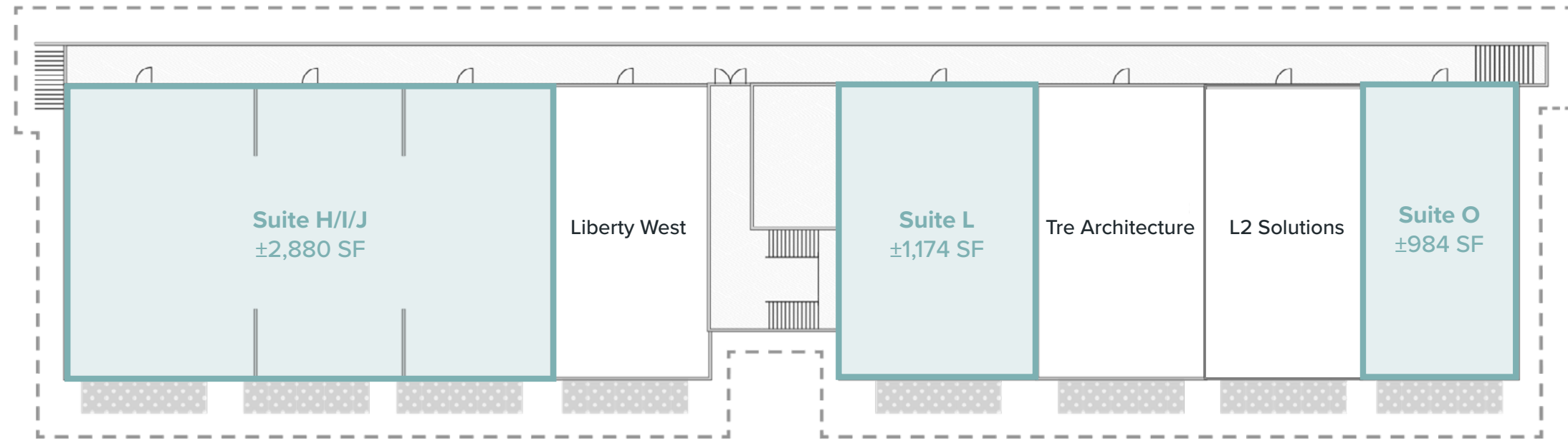
Oceanside is experiencing a surge of growth, with new restaurants, businesses, and major developments attracting both residents and visitors

Neighbors include Tanner's Prime Burgers, Corner Pizza, HomeState, Little Fox Cups & Cones, Lagree + Versa Fit, Verve Studios, and more!

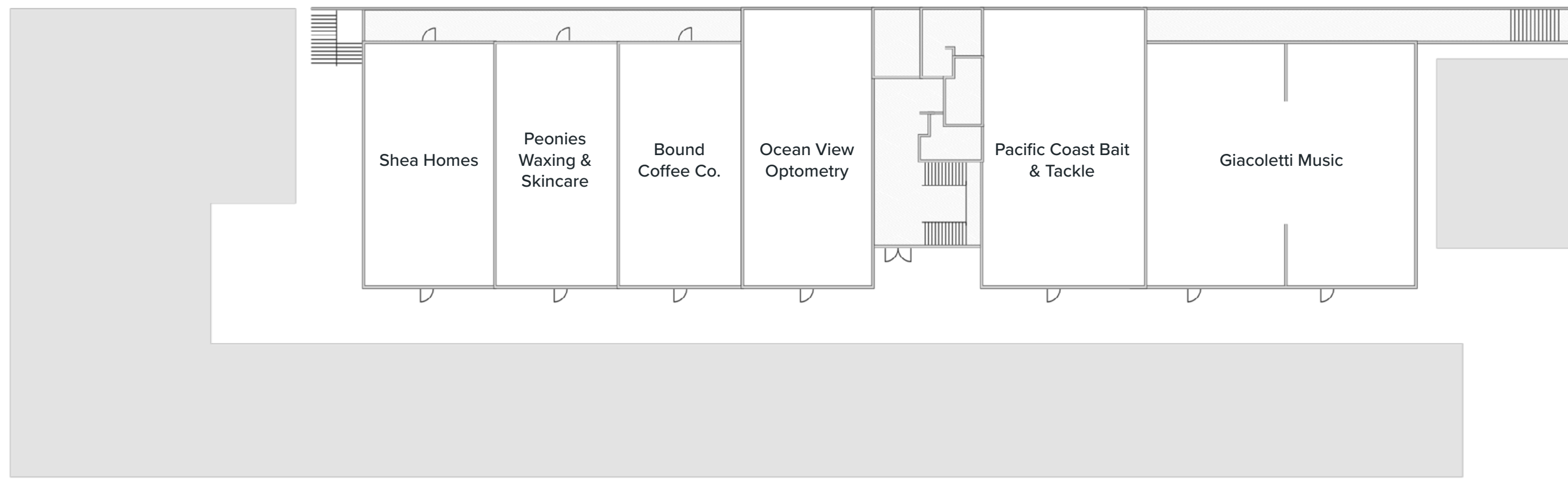


- Available Space
- Parking
- Balcony

Second Floor



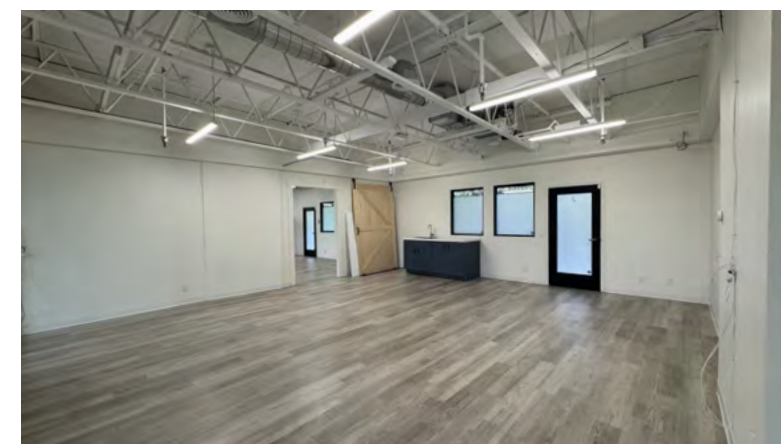
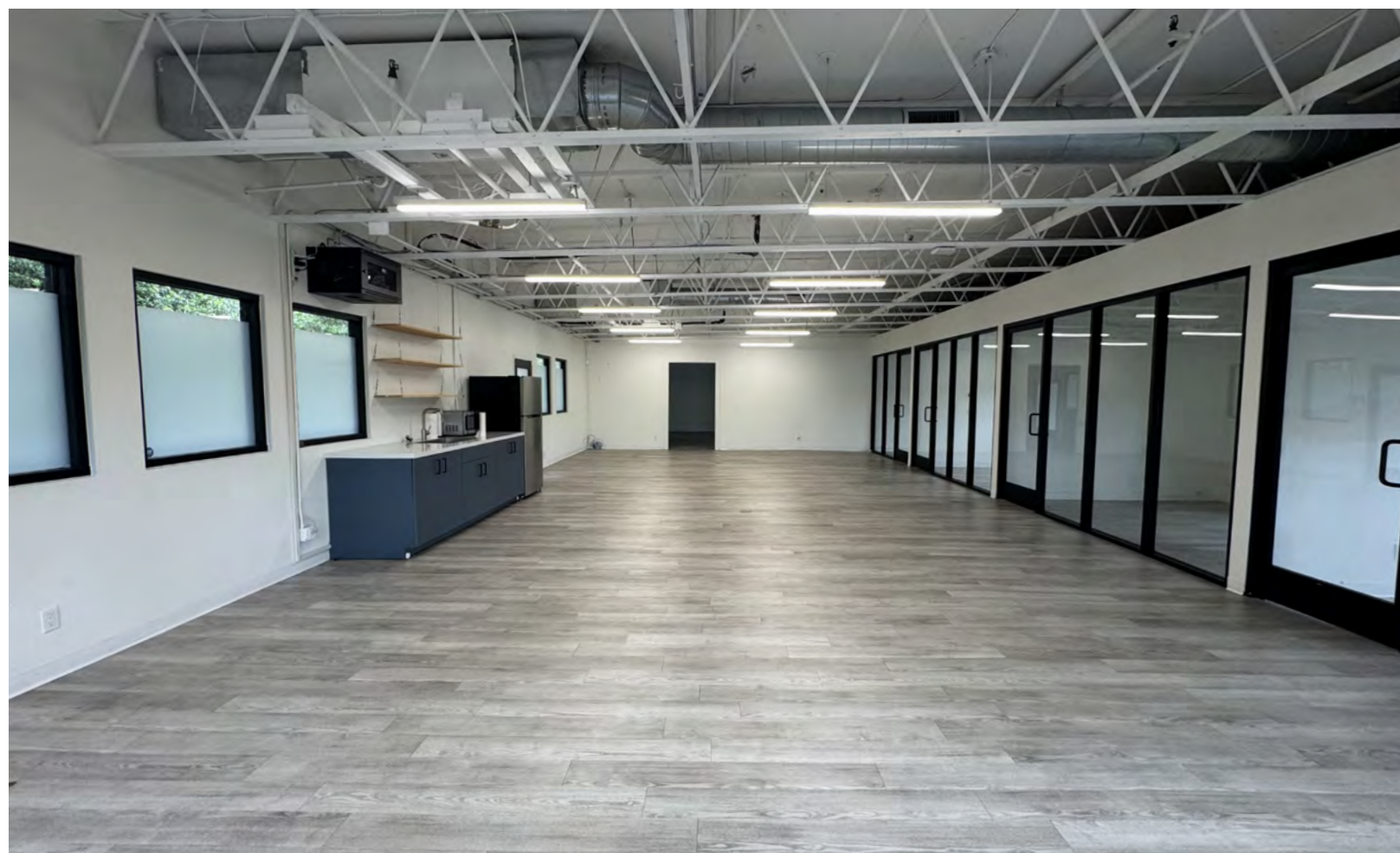
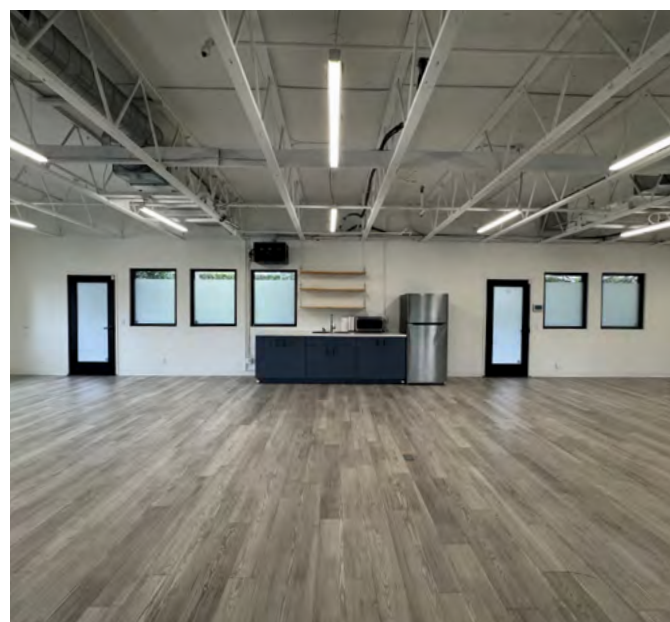
First Floor



S COAST HWY

Available Space

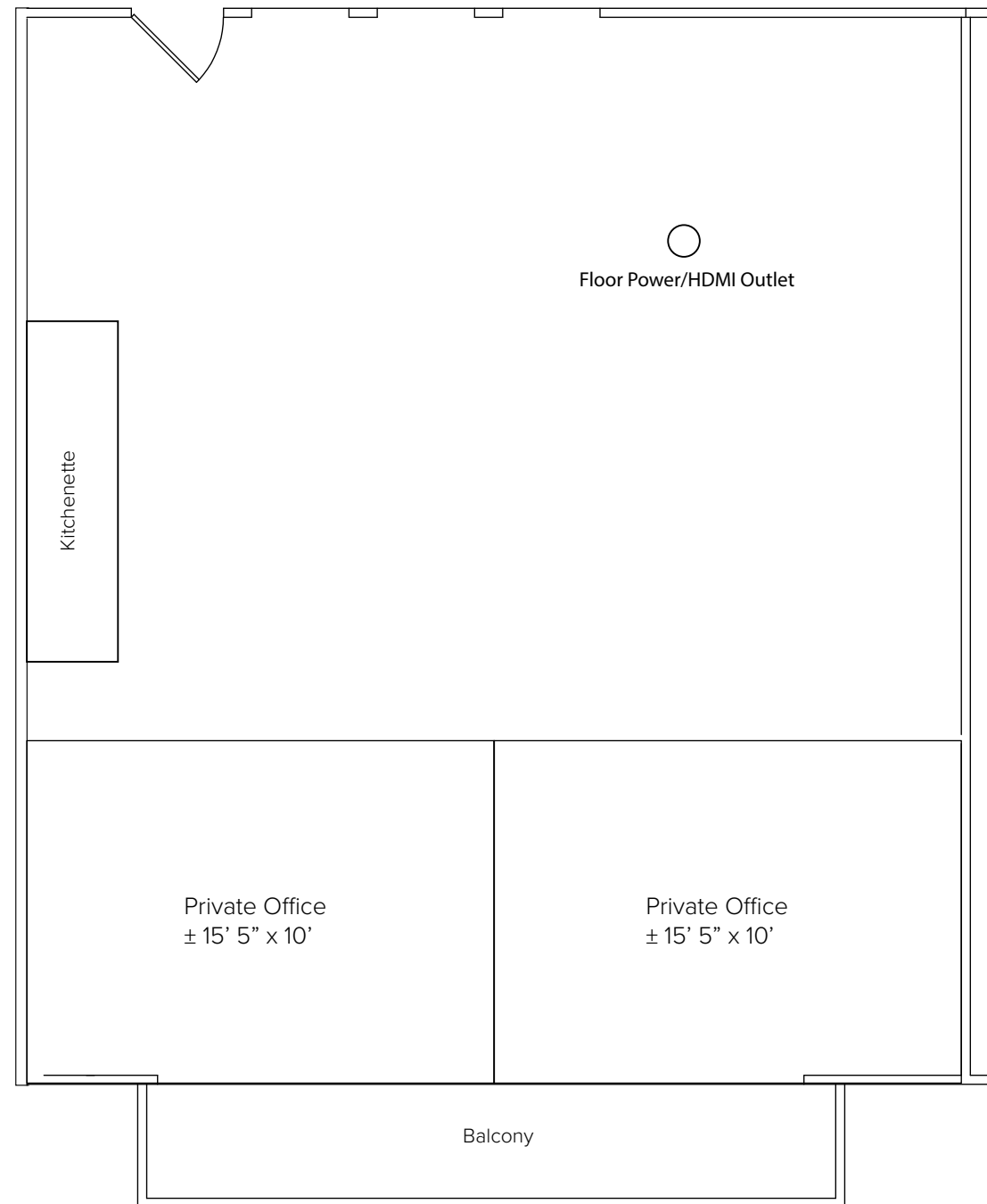
Suite H/I/J



Available Now
±2,880 SF



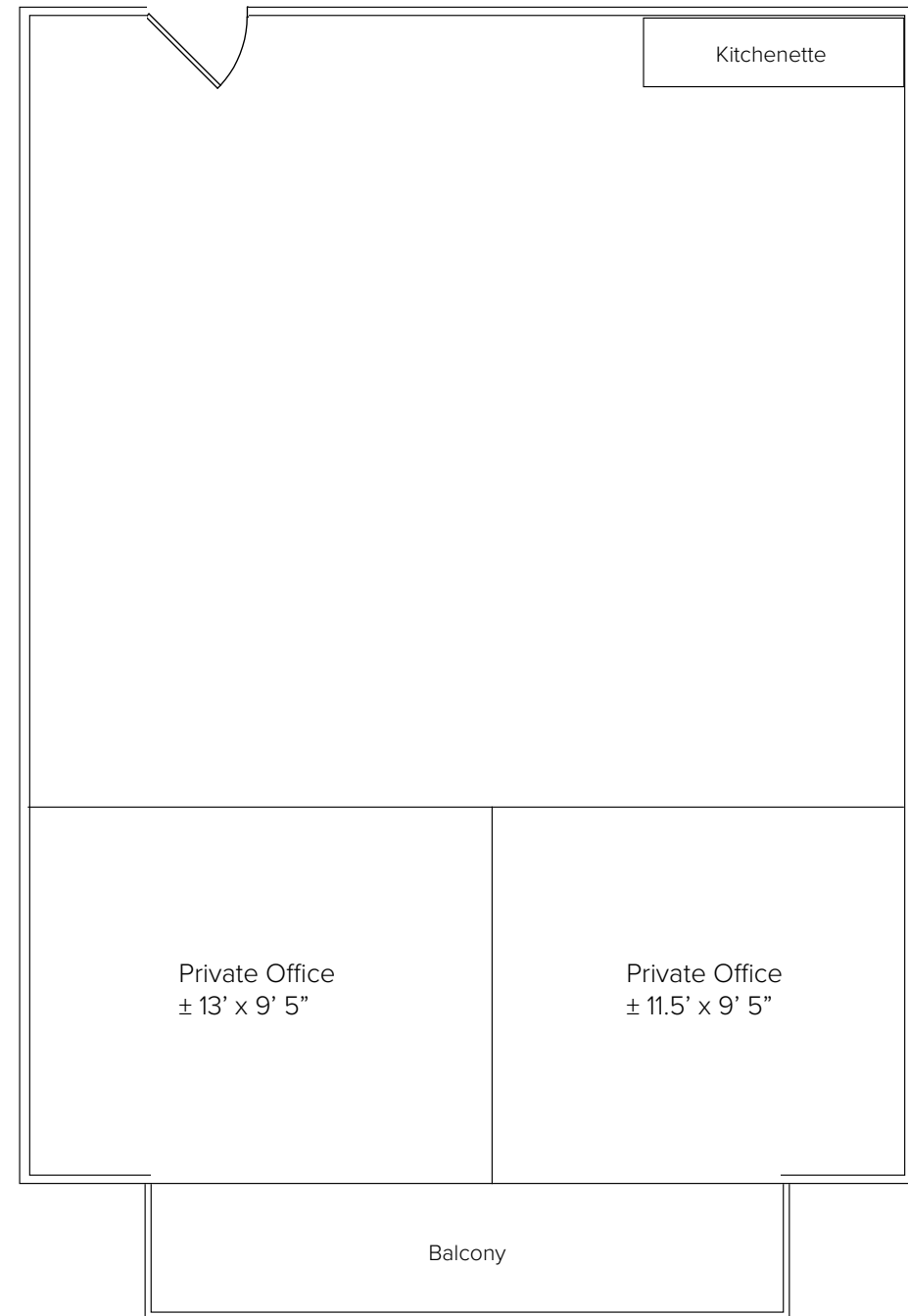
Suite L



Available Now
±1,174 SF



Suite ○



Available Now

±984 SF



1. Angelo's Burgers
2. SoCal Bike
3. Hill Sreet Brewery
4. Corner Pizza
5. Lagree + Versa Fit
6. Little Fox Cups + Cones
7. Tanner's Prime Burgers
8. Home State
9. Hill Street Donut House
10. Verve Studios
11. Johnson Interiors
12. And Breakfast Burritos
13. Rose Cafe
14. Merenda
15. Coastal Core Pilates
16. Therapy Social Fitness
17. Oceanside Florist Inc.
18. Surf Ride Boardshop
19. Pour House
20. Otterlei Coastal
21. Lofty Coffee
22. Nicks on State
23. Pure Taco
24. Jeune et Jolie
25. Kiln Coworking
26. NCTD Transit Station

The Neighbors



Carlsbad State Beach



1.4 Mi. from Site

Coastal Rail Trail



Carlsbad Village Station
0.9 Mi. from Site

LAGOON

VISTA WAY - 16,000 CARS/DAY

S COAST HIGHWAY - 16,000 CARS/DAY

In the Path of Development

Regal Cinemas Redevelopment

Regal Cinemas will be replaced by a vibrant seven-story mixed-use development in downtown Oceanside, featuring 321 residential units, retail shops, and restaurants. The project will include three levels of parking and modern living spaces, designed to enhance the area's appeal. This transformation will boost housing availability, increase foot traffic, and support local businesses, turning the site into a dynamic destination.



Seagaze | 179 Units Proposed



Moderna Neptune | 360 Units Proposed



Tower 1888 | 57 Units Proposed



Jefferson Oceanside | 295 Units Proposed



Revitalized Oceanside Transit Center

The reimagined Oceanside Transit Center (OTC) is set to become a vibrant, mixed-use destination that will benefit both locals and visitors. With enhanced bus and train connections, as well as improved bicycle and pedestrian access, the OTC will make getting around easier and more efficient. This project also promotes sustainable transportation and introduces new housing options, bringing fresh energy and convenience to the community.



Sunsets | 180 Units Proposed



Hope | 156 Units Proposed



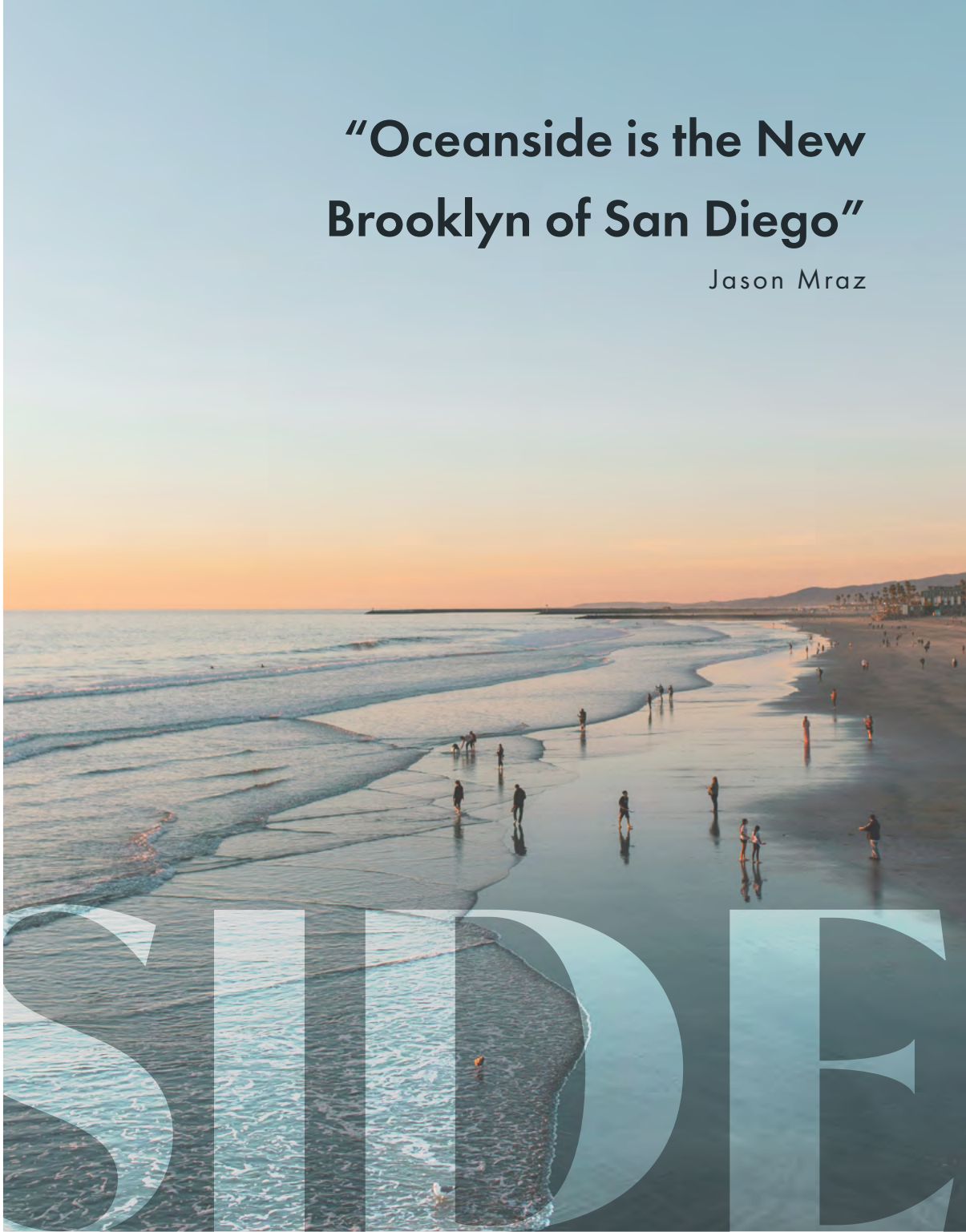
The New Vibe of O'Side

Oceanside is undergoing a major downtown revitalization, driven by large-scale mixed-use developments, transit upgrades, and luxury hotels that are transforming the coastal city into a vibrant hub for residents, visitors, and businesses. With new housing, office space, retail, and entertainment options, Oceanside is solidifying its role as a premier destination between Los Angeles and San Diego.



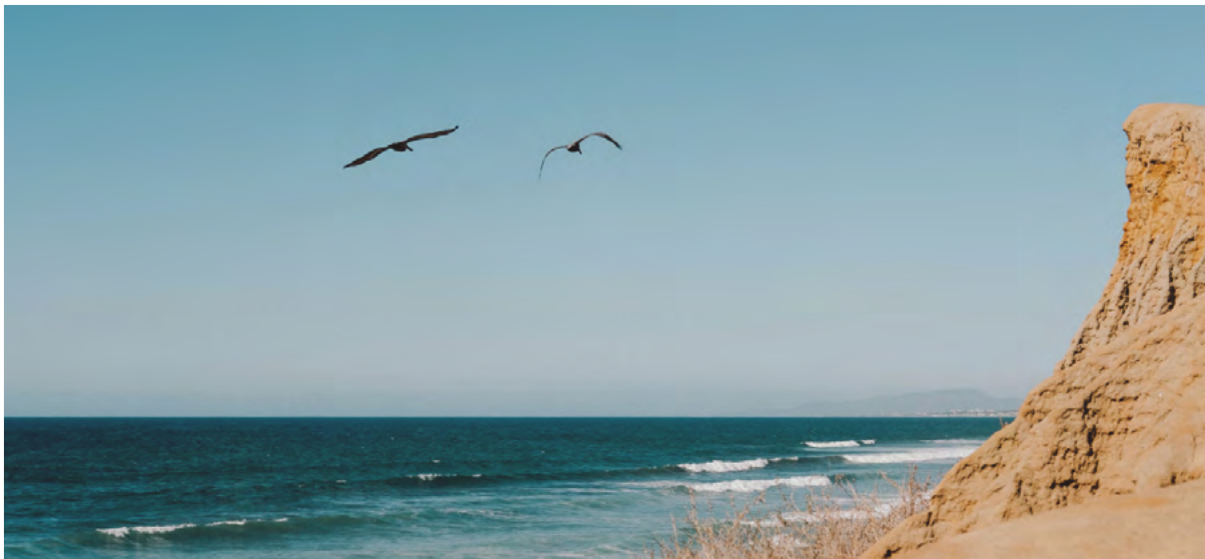
“Oceanside is the New Brooklyn of San Diego”

Jason Mraz



Home to Some of San Diego’s Newest Hotels and Residences

Oceanside is Southern California’s most authentic beach town, offering wide sandy beaches, a historic pier, and vibrant neighborhoods alongside a rich blend of surf culture, ocean adventures, and diverse culinary experiences. Known for its creativity and laid-back vibe, O’side invites visitors to explore, express, and enjoy everything from skateboarding to skydiving.



Discover Oceanside



Attractions

Over three miles of some of the widest, sandy beaches in Southern California naturally becomes the landing spot for locals and visitors alike. Alongside the beaches, the 1,000-slip harbor, multiple shops and restaurants, and the longest wooden pier on the western United States, makes Oceanside a popular and prestigious city.

Local Trade

A collection of quirky antiques and beachy boutiques can be found along Highway 101, the main road through town. Among the restaurants and surf shops, shoppers can find trendy and designer merchandise, independent local brands, souvenirs, seashells, and other curios.

Coastal Events

Oceanside hosts a multitude of events including the Annual World Bodsurfing Championships - bodysurfers compete for the prestigious championship title. The city also hosts one of the oldest of the Ironman's, the Oceanside Ironman, attracting a large number of professional athletes.

↑
15 min
Orange County

Camp Pendleton
Oceanside



Carlsbad

Leucadia

Encinitas



35 min

Downtown
↓

Oceanside Employers

Largest Public Employers

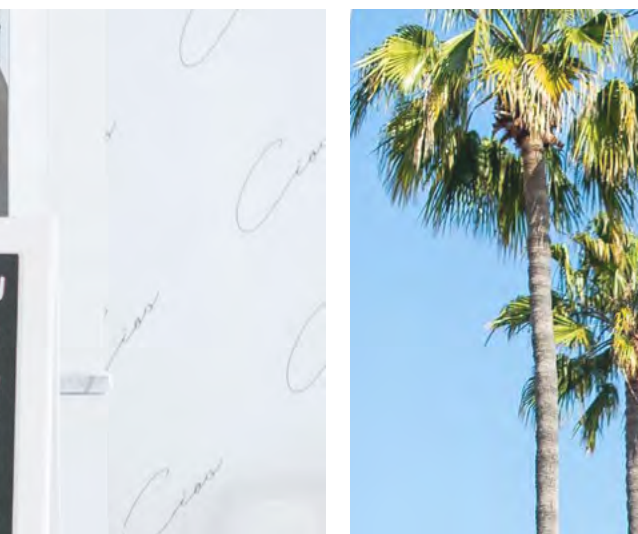
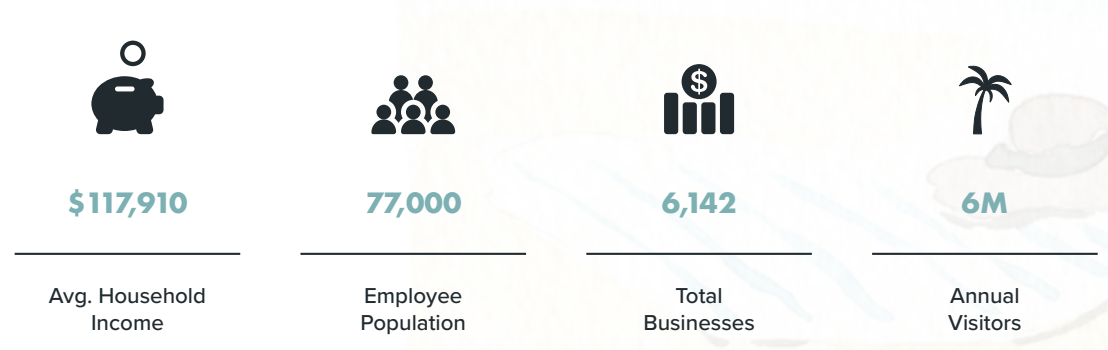
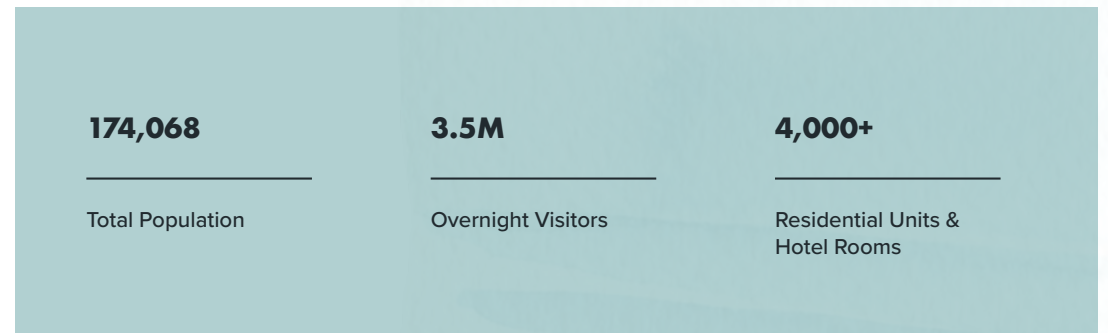
Oceanside Unified School District
Camp Pendleton
City of Oceanside
MiraCosta Community College
North County Transit District
Tri-City Medical Center

Largest Private Employers

Genentech Pharmaceuticals
Hydranautics
Nitto Denko
Gilead Sciences
Hobie Cat

The Demographics

Oceanside is one of the fastest-growing coastal cities in Southern California, home to over 170,000 residents with a diverse and youthful population. Its strategic location between San Diego and Orange County, combined with strong military, tourism, and local business sectors, supports a dynamic and resilient economy.



LAPOON



Contact Us.

Amy McNamara

Amy@upgsocal.com

760-889-2127

Lic No 01083491

Serena Patterson

Serena@upgsocal.com

619-994-3918

Lic No 01721040



upgsocal.com | 858.874.1989

©2026 Urban Property Group, Inc. Information herein has been obtained from sources deemed reliable, however its accuracy cannot be guaranteed. The user is required to conduct their own due diligence and verification.