

# JACKSON SQUARE GEM

847 SANSOME STREET

FULL FLOOR OPPORTUNITIES

RATES FROM \$29 IG

FLOORS DELIVERED PLUG & PLAY

*Call for Details*

## FOR LEASE

### BUILDING HIGHLIGHTS:

- Efficient Full Floors
  - Brick & Timber
  - Creative Spaces
  - High-end Finishes
    - HVAC
  - High Touch Local Ownership
- Steps to North Beach, Embarcadero & Restaurants
  - Downtown Skyline
  - Plentiful Street Parking
- Short Commute from Marin County

JAY D. SHAFFER

415-407-3997

[jshaffer@coltoncommercialsf.com](mailto:jshaffer@coltoncommercialsf.com)

License #: 01444640

BRADLEY L. COLTON

415-834-1600

[bcolton@coltoncommercialsf.com](mailto:bcolton@coltoncommercialsf.com)

om License #: 00805116

BRYAN B. COLTON

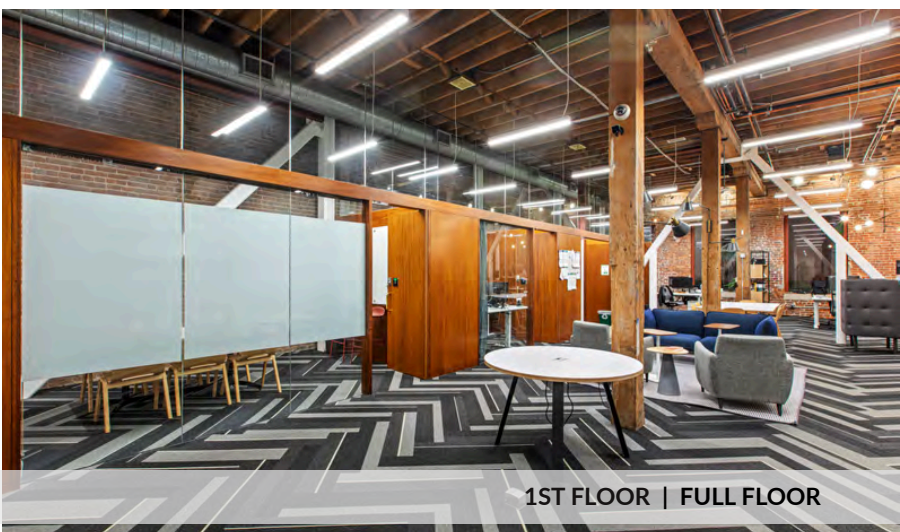
415-595-6959

[bryancolton@coltoncommercialsf.com](mailto:bryancolton@coltoncommercialsf.com)

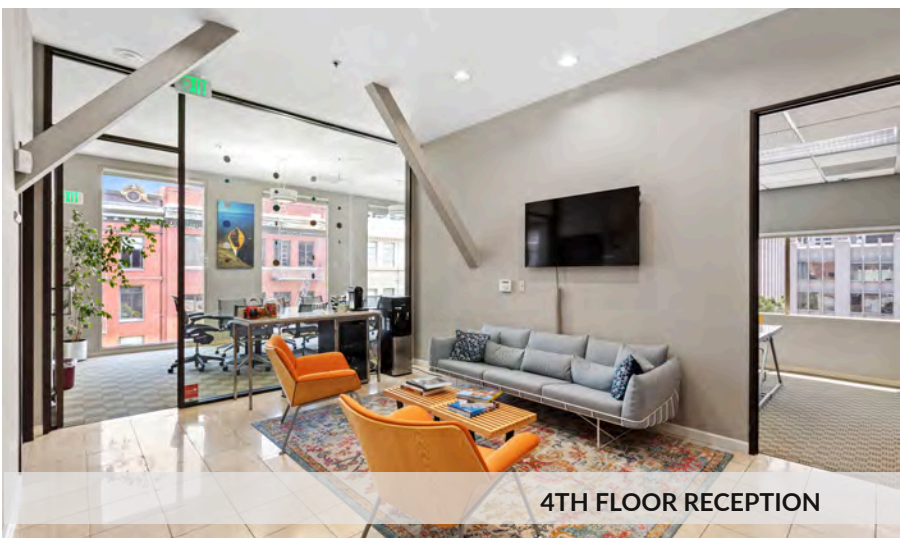
License #: 02111407



# AVAILABLE SPACES



1ST FLOOR | FULL FLOOR



4TH FLOOR RECEPTION

SUITE	SIZE	AVAILABLE	RATE
3RD FLOOR   FULL FLOOR Plug & Play	4,589 RSF +/-	NOW	\$29.00 IG
<del>SUITE 200</del>	<del>1,872 RSF +/-</del>	<del>LEASED</del>	
<del>SUITE 201</del>	<del>2,640 RSF +/-</del>	<del>LEASED</del>	
1ST FLOOR   FULL FLOOR	3,650 RSF +/-	MARCH 1, 2026	\$48.00 IG
<del>GARDEN LEVEL</del>	<del>3,862 RSF +/-</del>	<del>LEASED</del>	
<b>TOTAL AVAILABLE:</b>	<b>8,239 RSF +/-</b>		

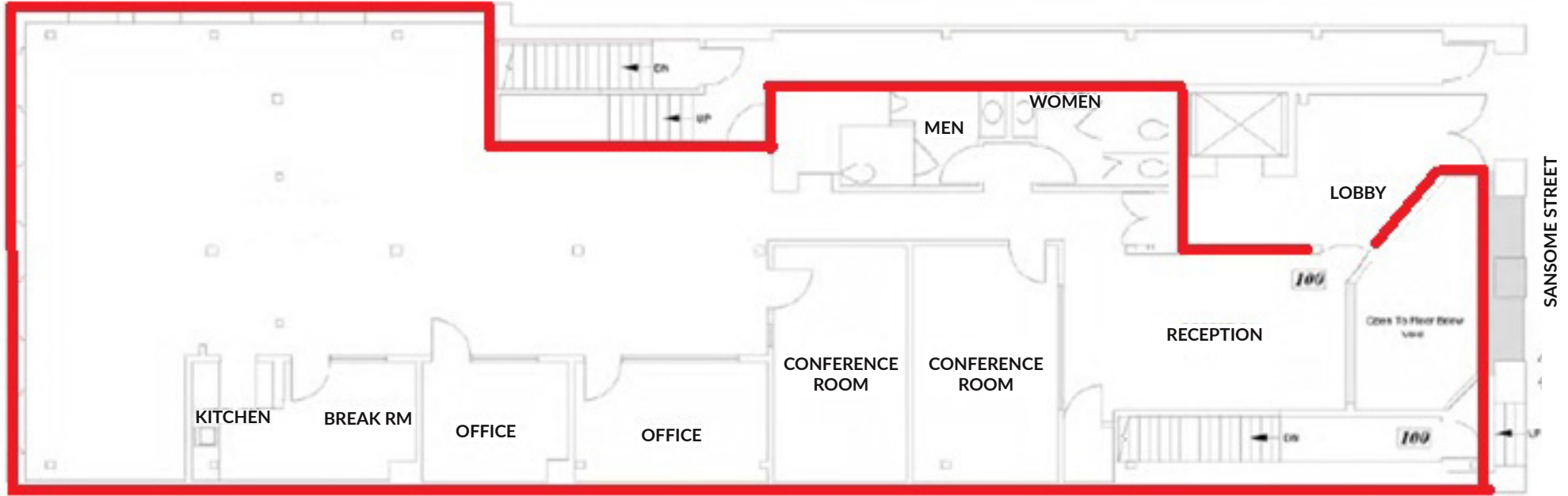
Both Floors Delivered Plug & Play

\*Rates are based on an "As-Is" basis. Improvements amortized over lease term.

847 SANSOME STREET

Delivered Plug and Play  
15 foot +/- exposed ceilings. Full floor brick & timber space. Mostly open floor plan and multiple private offices, conference rooms, kitchen & large open area.

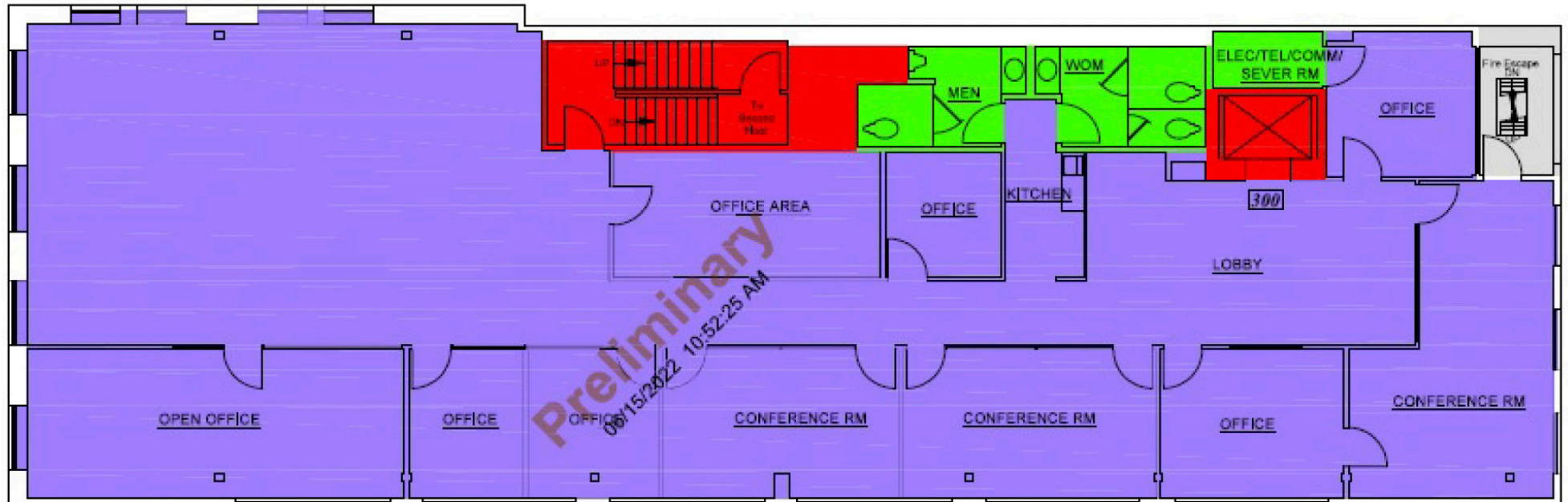
3,650 RSF +/-





Full Floor brick & timber space. Mix of private offices, conference rooms, kitchen & open space.

4,589 RSF +/-





**RATES FROM \$29 IG**  
**FLOORS DELIVERED PLUG & PLAY**  
*Call for Details*

## 847 SANSOME STREET

PLEASE CONTACT FOR MORE INFORMATION:

**JAY D. SHAFFER**  
415-407-3997

[jshaffer@coltoncommercialsf.com](mailto:jshaffer@coltoncommercialsf.com)  
License #: 01444640

**BRADLEY L. COLTON**  
415-834-1600

[bcolton@coltoncommercialsf.com](mailto:bcolton@coltoncommercialsf.com)  
License #: 00805116

**BRYAN B. COLTON**  
415-595-6959

[bryancolton@coltoncommercialsf.com](mailto:bryancolton@coltoncommercialsf.com)  
License #: 02111407



DISCLOSURE: The foregoing is based upon information provided by others which we believe is accurate, however, no guarantee, warranty or representation is made. Colton Commercial & Partners, Inc. recommends that all interested parties independently verify its accuracy and completeness.