



[CLICK TO VIEW MAP](#)

east tampa

COMMERCE • CENTER

42,732 SF
AVAILABLE

LOCATION HIGHLIGHTS



ABOUT

With its superior in-fill location and highly desirable exposure on US Highway 301, East Tampa Commerce Center marks the epicenter of the East Tampa industrial submarket. Sitting just south of Adamo Drive/SR 60 and north of the Lee Roy Selmon Expressway, the park's location offers quick access to the Port of Tampa and is easily accessible from major transportation arteries including Interstate 4 and Interstate 75. This perfectly central location allows eCommerce last-mile delivery to reach 90% of the MSA's population within 45 minutes.



CLASS A NEW CONSTRUCTION



GREAT LOCATION ON US HIGHWAY 301 JUST NORTH EAST OF THE SELMON EXPRESSWAY.



IN THE HEART OF THE EAST TAMPA MARKET



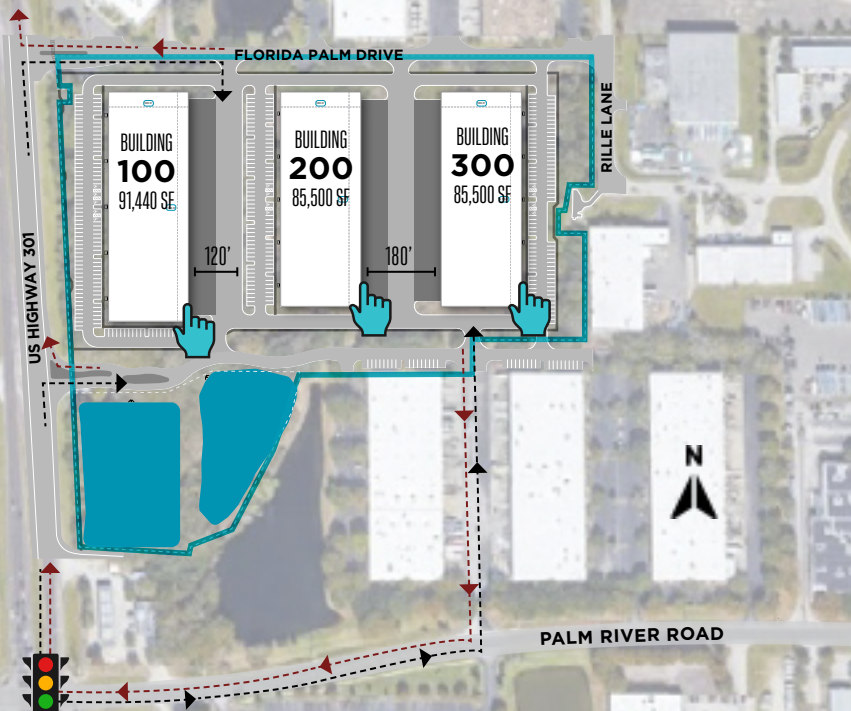
HIGH VISIBILITY ON US HIGHWAY 301.



MULTIPLE POINTS OF INGRESS/EGRESS



[CLICK HERE TO VIEW SPEC OFFICE PLAN FOR BUILDING 200 & 300](#)



PROPERTY SPECIFICATIONS

TOTAL SF
262,440 SF

BUILDING DEPTH
180'

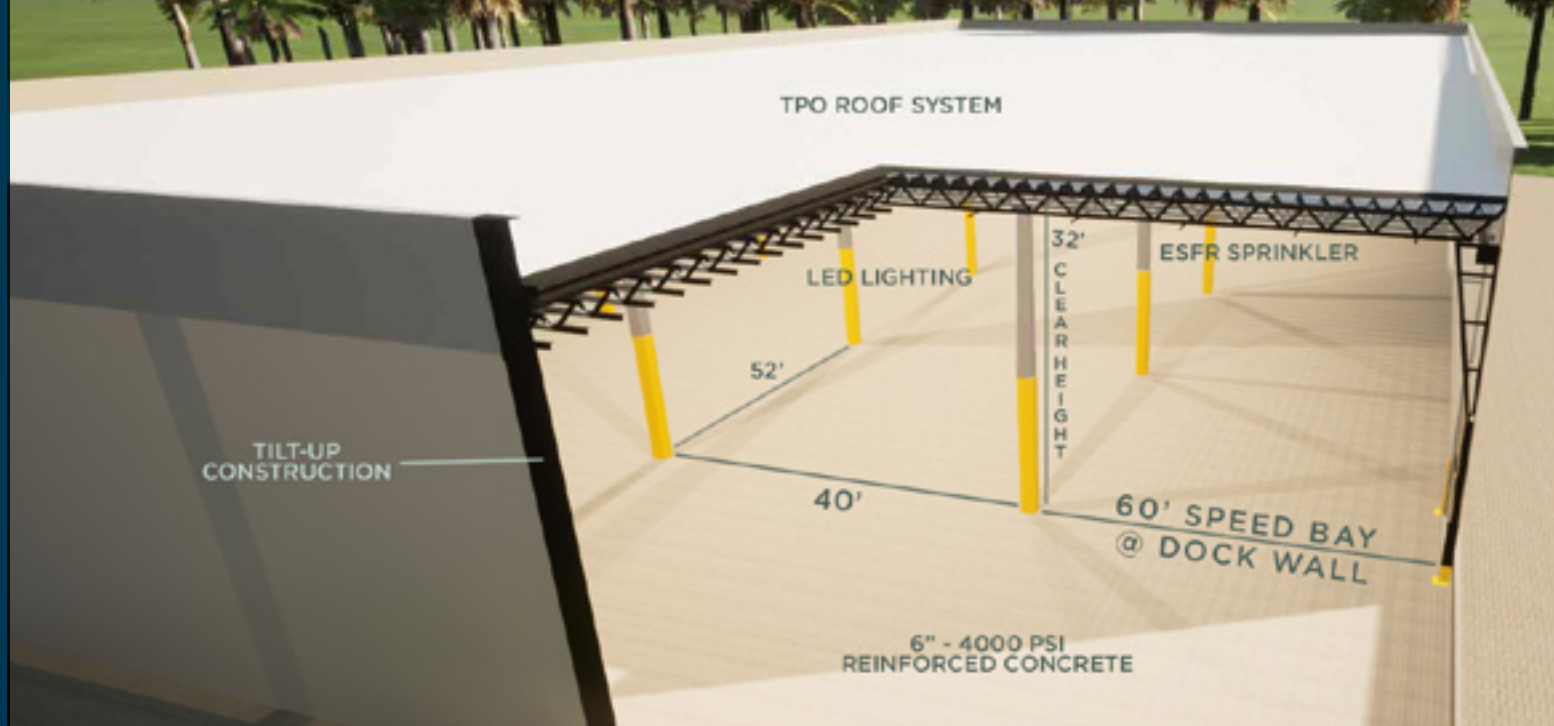
LOADING
REAR LOADING

CLEAR HEIGHT
32'

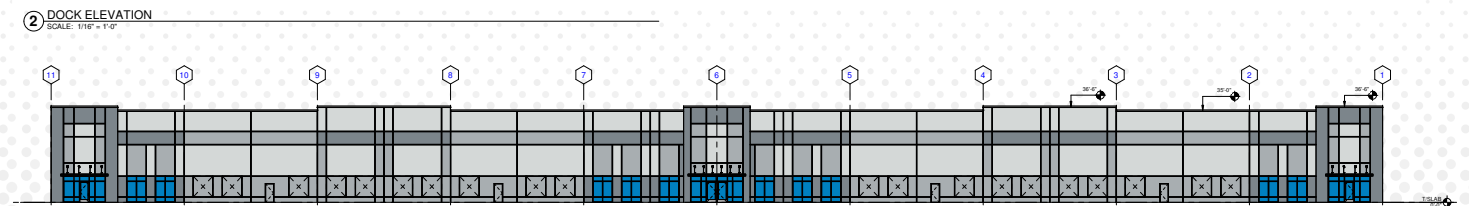
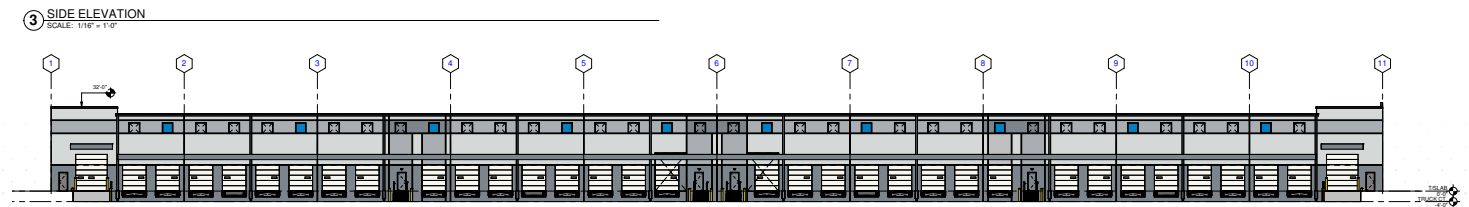
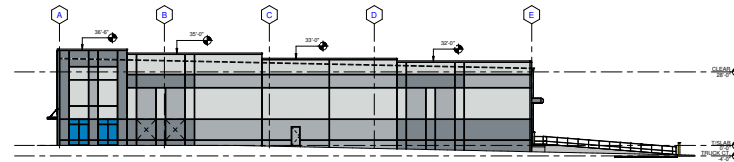
COLUMN SPACING
52' X 40'

TRUCK COURT
BLDG 200/300 - 180' SHARED

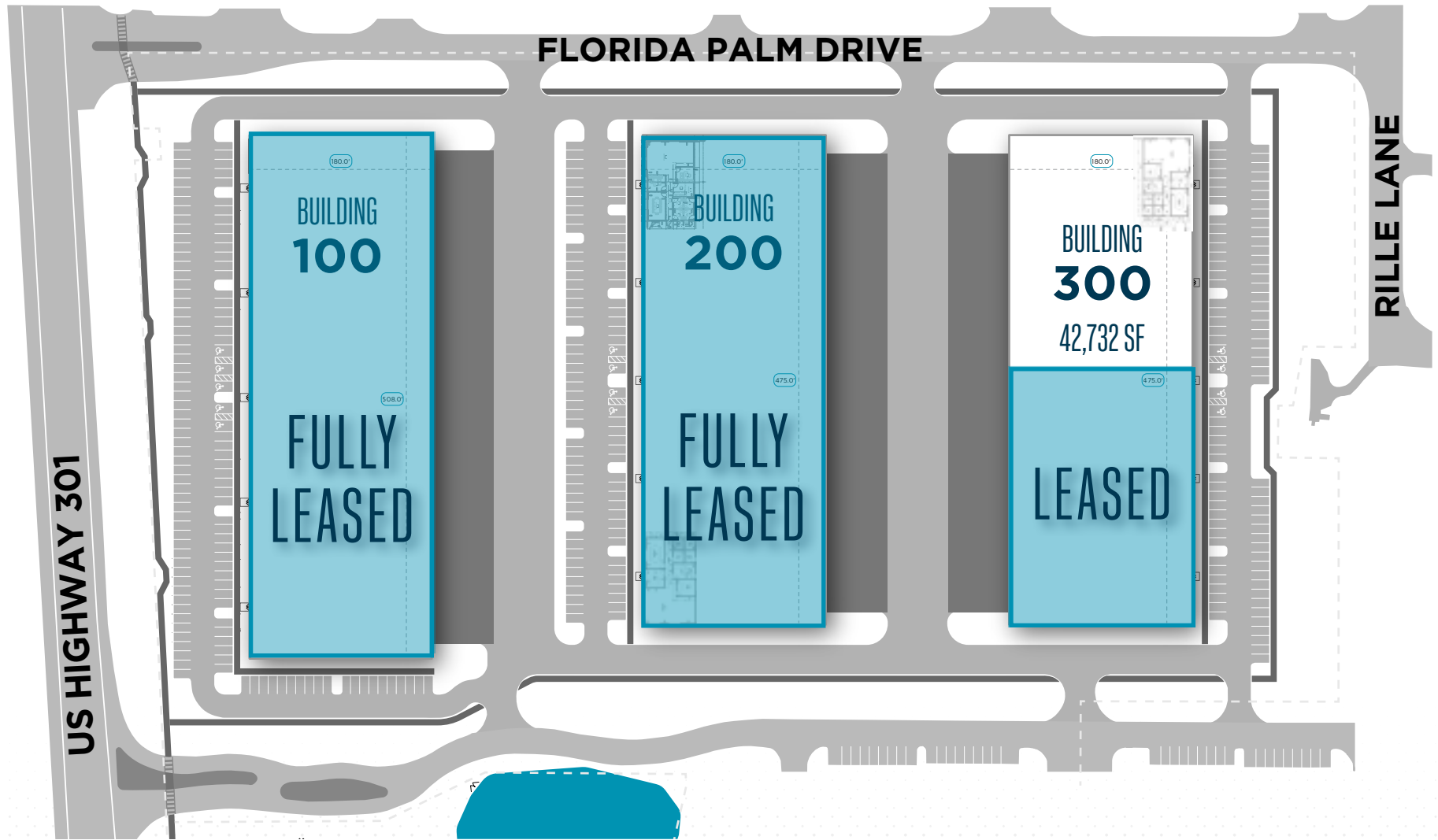
FIRE PROTECTION
ESFR



BUILDING ELEVATIONS



AVAILABLE SPACES



BUILDING	AVAILABLE SF	LOADING
100	FULLY LEASED	FULLY LEASED
200	FULLY LEASED	FULLY LEASED
300	21,366 - 42,732 SF	14 DOCK DOORS, 1 RAMP

LOCATION & ACCESS

STRATEGIC LOCATIONS



OUTSTANDING EAST TAMPA LOCATION.



EASY ACCESS TO THE SELMON EXPRESSWAY/I-75 & I-4.



10 MINUTES TO DOWNTOWN TAMPA

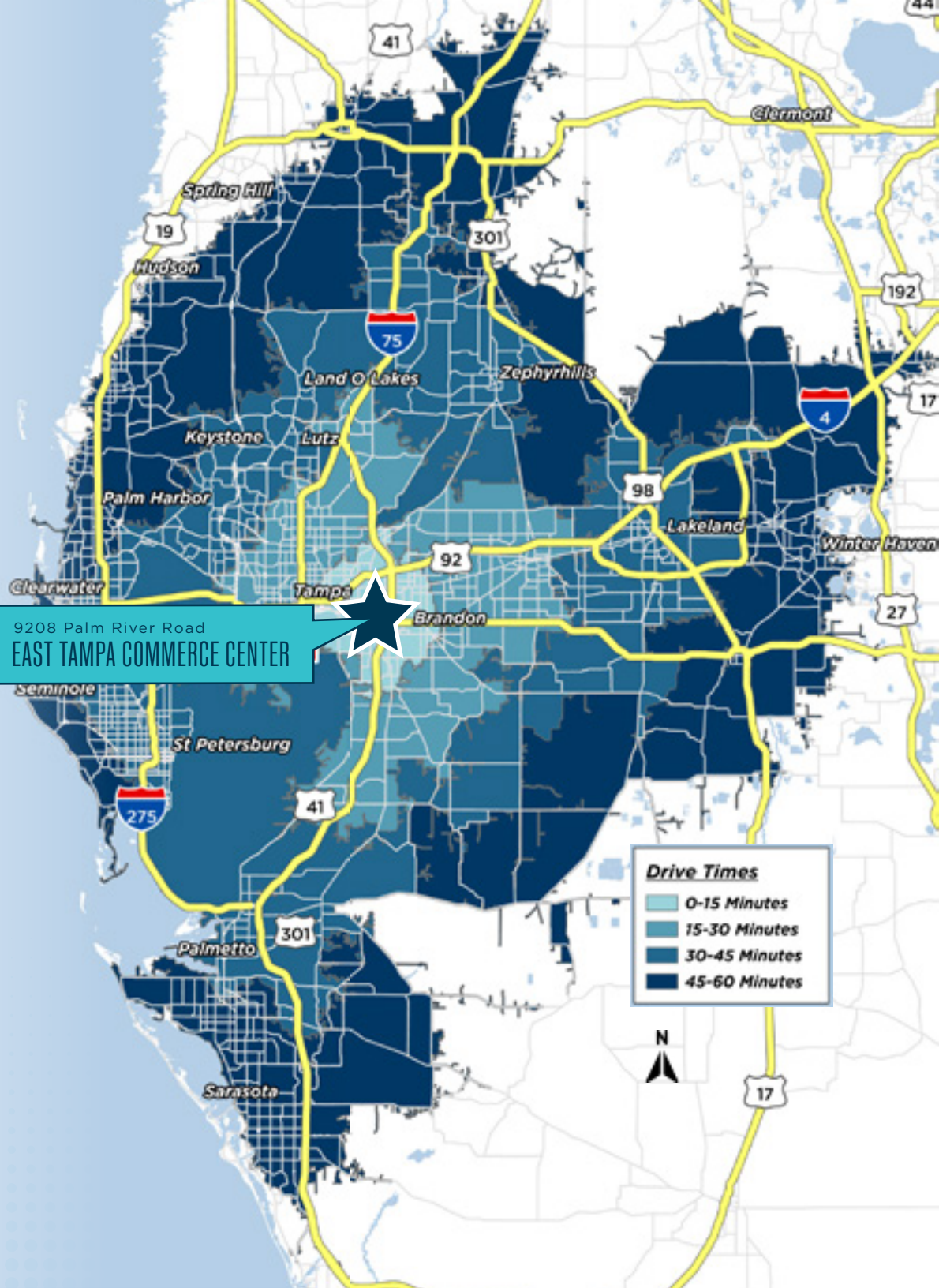


WITHIN MINUTES TO THE PORT OF TAMPA.



CLOSE PROXIMITY TO RESTAURANTS, HOTELS,
AND OTHER AMENITIES.

9208 Palm River Road
EAST TAMPA COMMERCE CENTER



CORPORATE NEIGHBORS





TREY CARSWELL, SIOR
Executive Director
813 230 6131
trey.carswell@cushwake.com

LISA ROSS, SIOR
Executive Director
813 424 3211
lisa.ross@cushwake.com

SAM KOROLOS
Director
704 989 1327
sam.korolos@cushwake.com

MELISSA WATTERWORTH
Senior Associate
813 599 2190
melissa.watterworth@cushwake.com