

UNITS FOR LEASE

YORBA LINDA COMMERCE CENTER

3700 - 3960 Prospect Ave, Yorba Linda, CA 92886



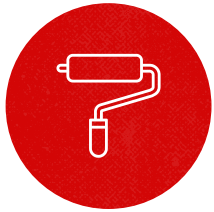
EXCLUSIVELY LISTED BY:



Gary Martinez, CCIM, SIOR
(714) 905-9393
gary@ashwillassociates.com
DRE Lic #01318932

Ashwill
Associates
COMMERCIAL REAL ESTATE

PROPERTY FEATURES



Refurbished Units
Move-in Ready



Ground Level
Doors



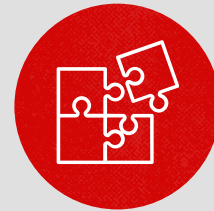
Space to Grow
Your Business



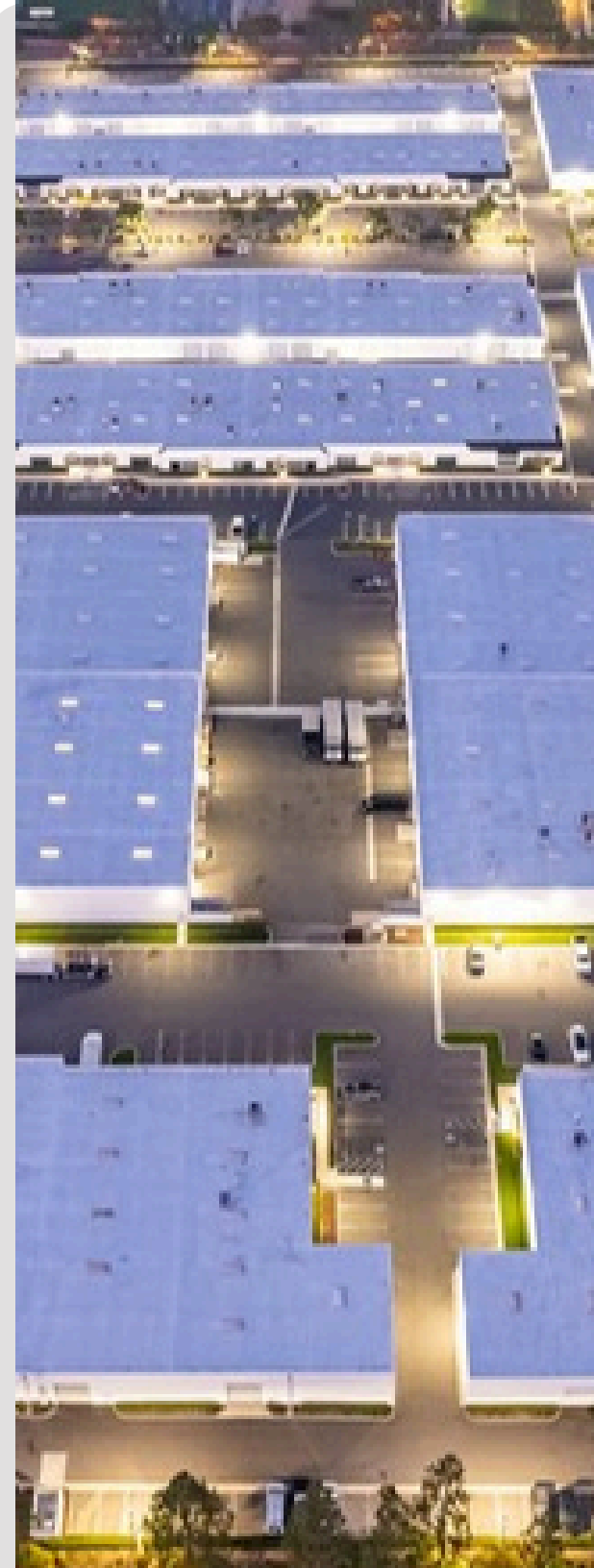
Professional
On-Site Management



Ample
Parking



Multiple Space
Configurations





EXCLUSIVELY LISTED BY:



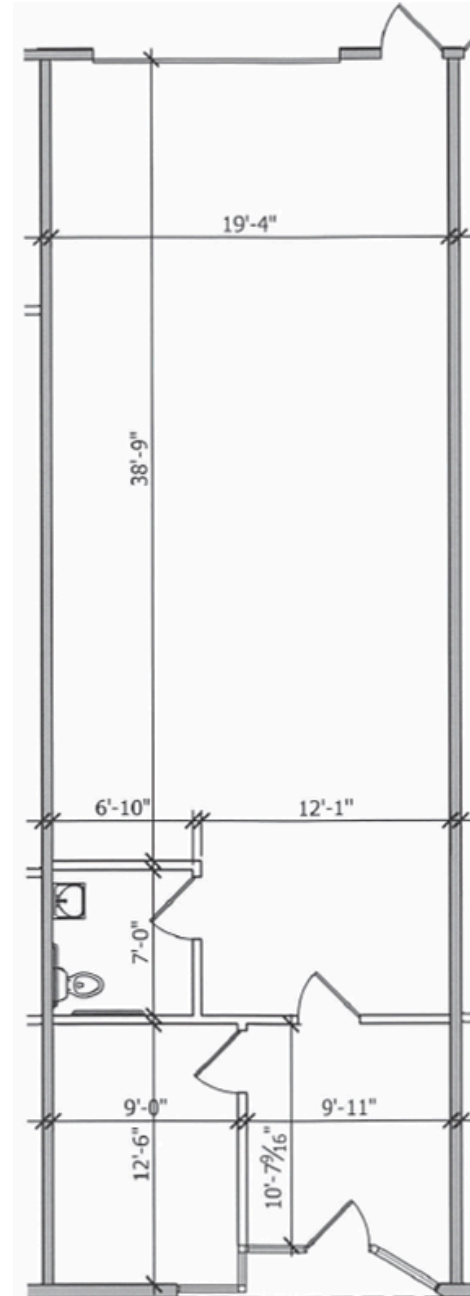
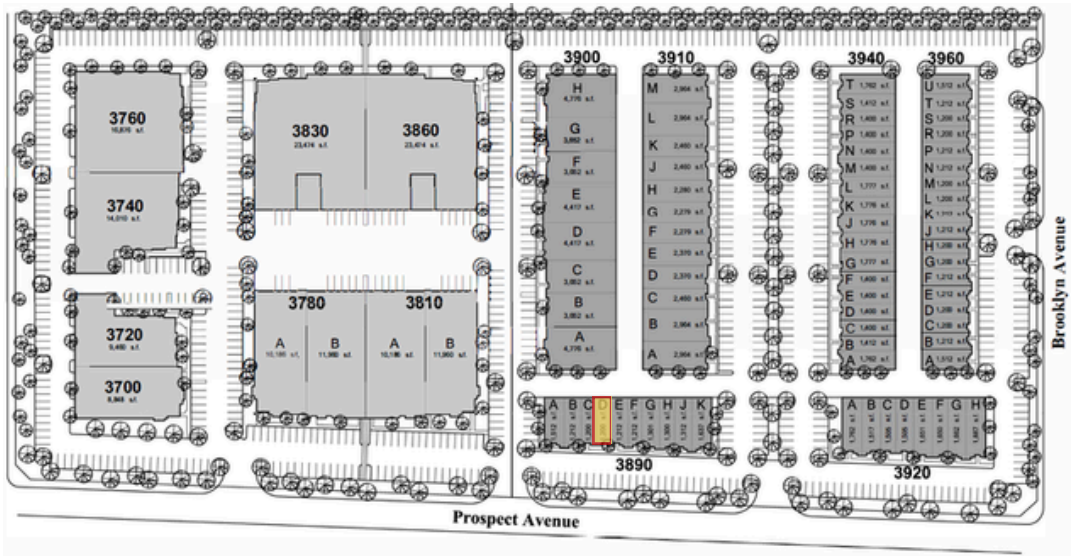
Gary Martinez, CCIM, SIOR
(714) 905-9393
gary@ashwillassociates.com
DRE Lic #01318932

Ashwill
Associates
COMMERCIAL REAL ESTATE

SUITE 3890-D

± 1,200 Total SF
 ± 265 Office SF

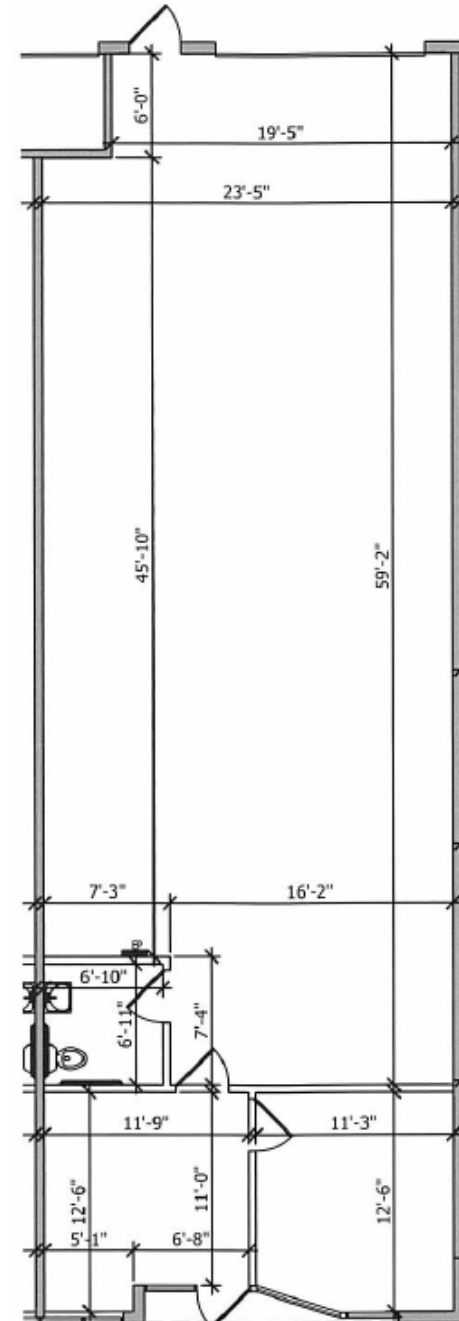
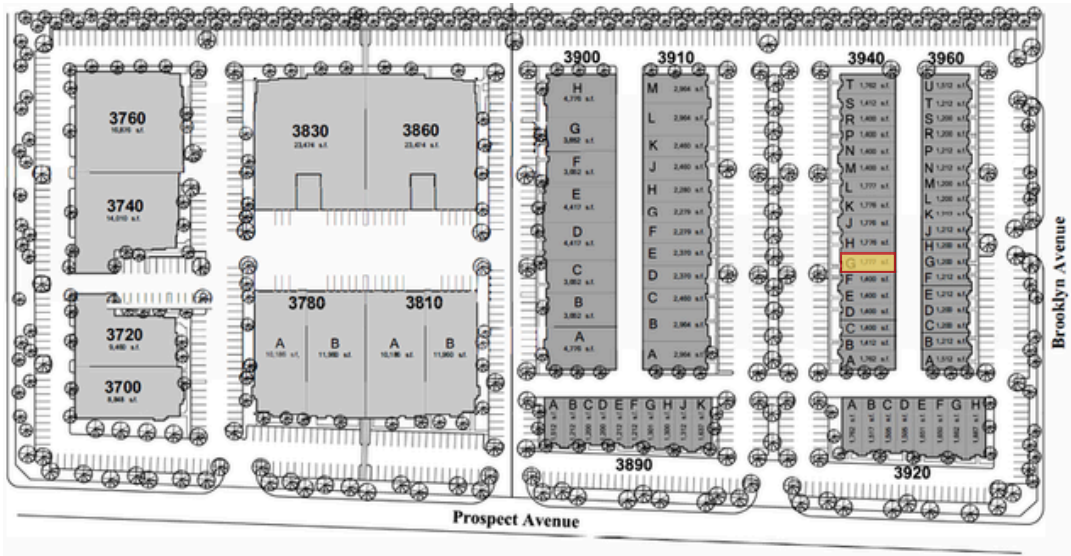
*Floor Plans Not to Scale



SUITE 3940-G

± 1,777 Total SF

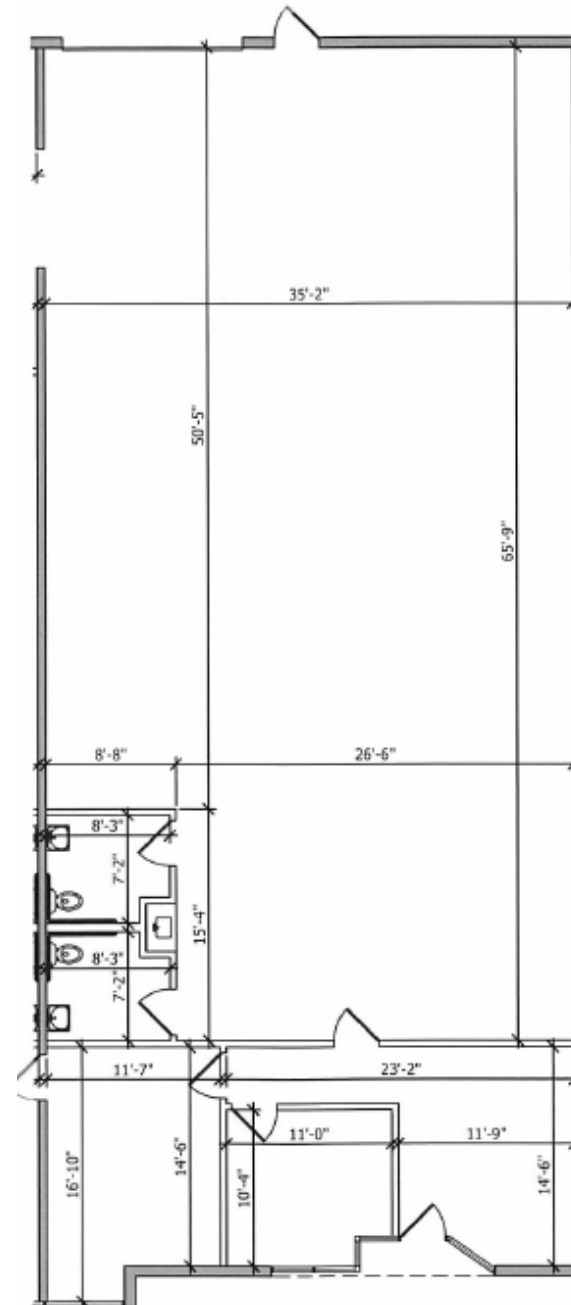
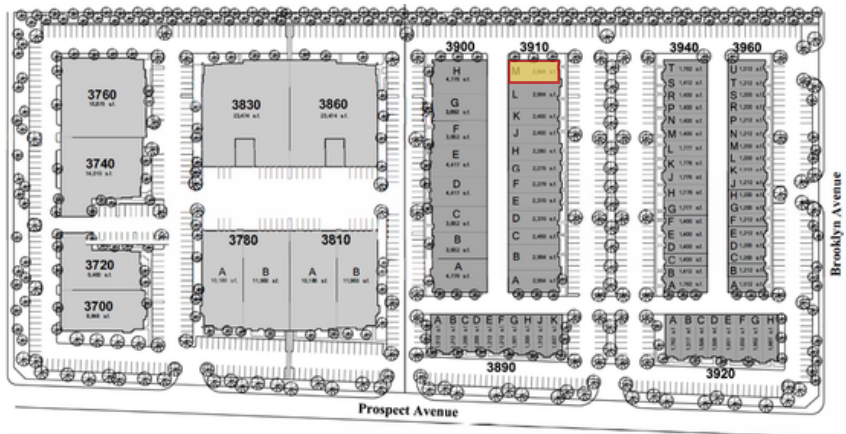
± 322 Office SF



*Floor Plans Not to Scale

SUITE 3910-M

± 2,964 Total SF
± 566 Office SF

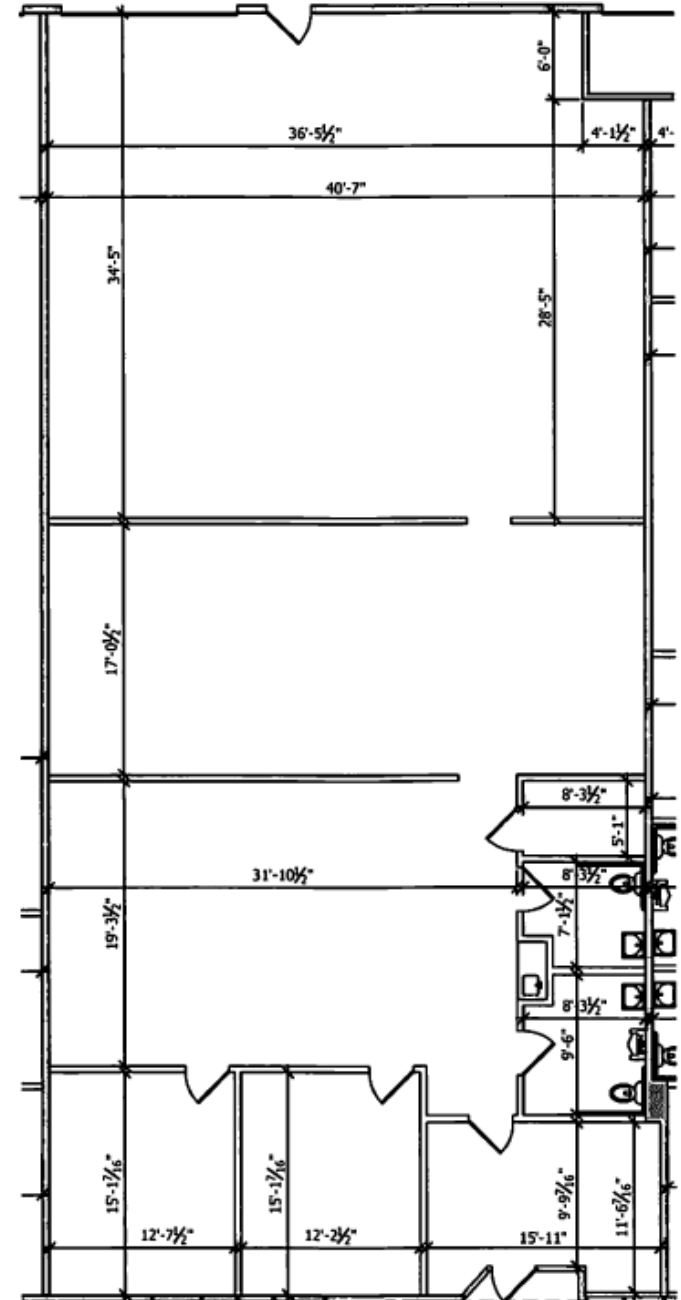
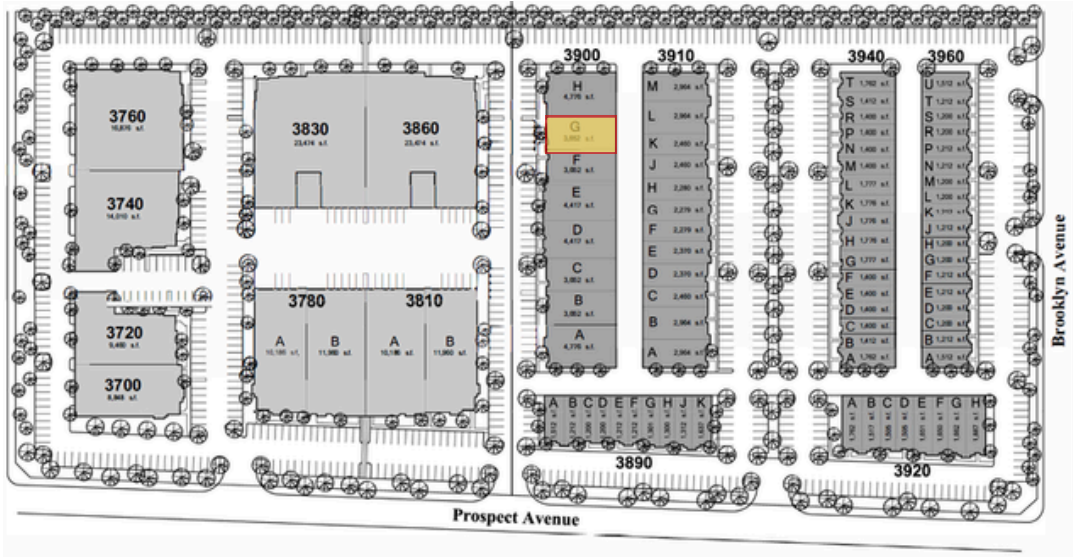


*Floor Plans Not to Scale

SUITE 3900-G

± 3,652 Total SF
 ± 1,476 Office SF

*Floor Plans Not to Scale





UNITS FOR LEASE

YORBA LINDA COMMERCE CENTER

3700 - 3960 Prospect Ave, Yorba Linda, CA 92886



Ashwill
Associates
COMMERCIAL REAL ESTATE

Disclaimer: All information contained herein is deemed reliable but not guaranteed. Prospective tenants should independently verify all measurements, features, and zoning regulations. Availability, pricing, and terms are subject to change without notice. This is a marketing brochure and not a legally binding offer.

For more information:



Gary Martinez, CCIM, SIOR
(714) 905-9393
gary@ashwillassociates.com
DRE Lic #01318932