

FOR LEASE
ATTRACTIVE WESTSHORE OFFICE SPACE
1300 N. Westshore Boulevard
Tampa, FL 33607



4,959 Square Feet Available - Can be Divided
\$31.50 PSF Full Service

Ray Ploucher, CCIM

REAL ESTATE ADVISORY CORP. – TAMPA

Licensed Real Estate Broker

813-637-8888 Office; 813-774-1788 Mobile:

rayploucher@reactampa.com

Note: Every effort has been made to provide accurate information, however Real Estate Advisory Corp.–Tampa makes no representations, guarantees, or warranties of any kind, expressed or implied regarding the information contained herein.

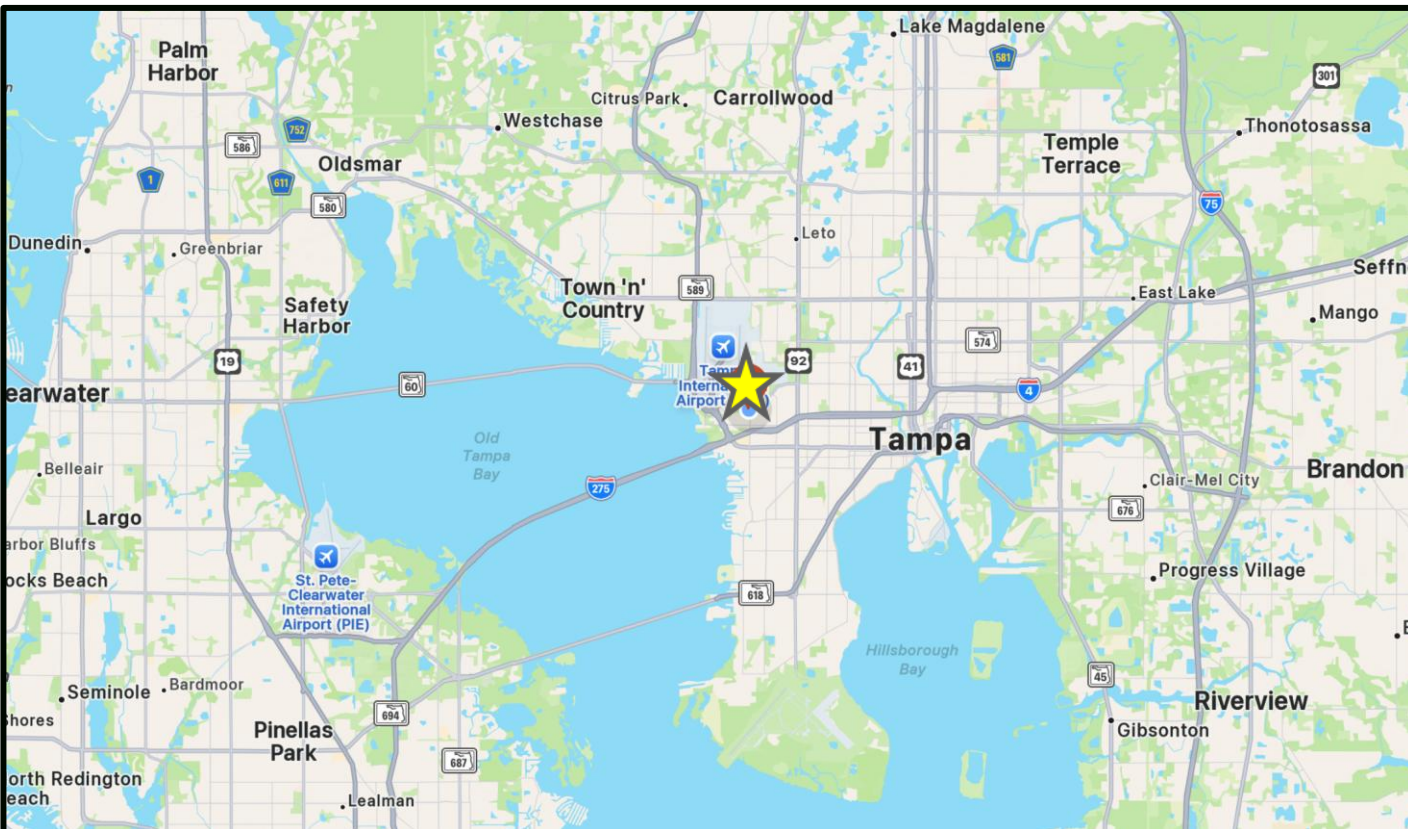
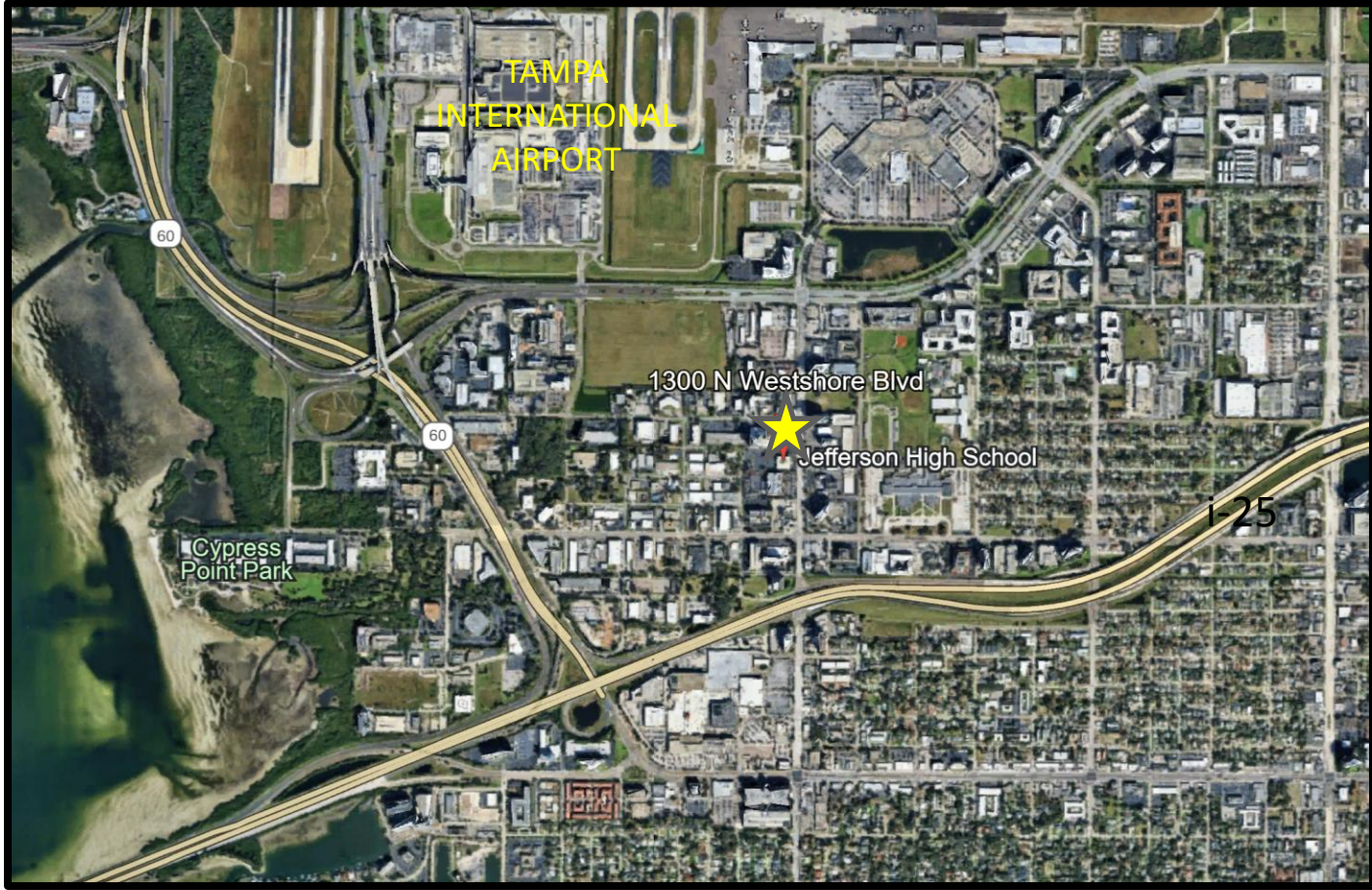
BUILDING HIGHLIGHTS:

- Strategically located in Westshore Business District
- Pylon Signage Available on Westshore Boulevard
- Excellent Visibility
- Convenient Access to Interstate & Veterans Expressway
- Abundant Parking
- Common Area Breakroom
- On site professional maintenance and janitorial
- Attractive & well-maintained common areas
- Secure After hour door security
- Attractive Rental Rates

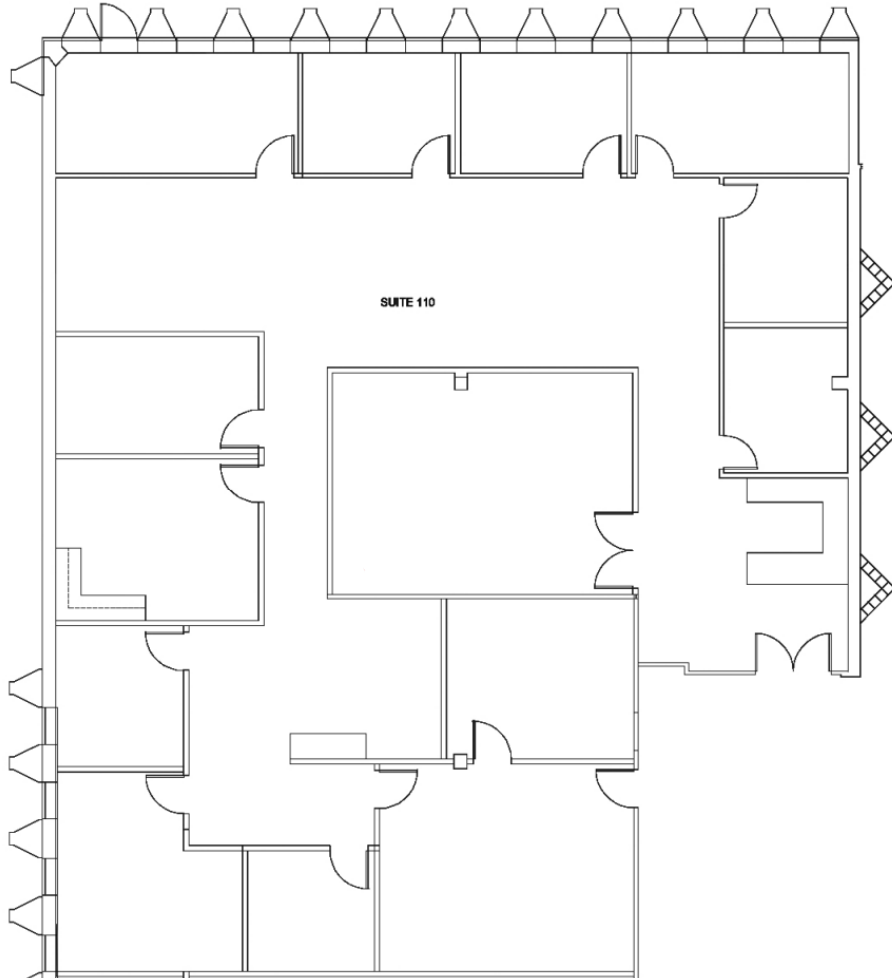


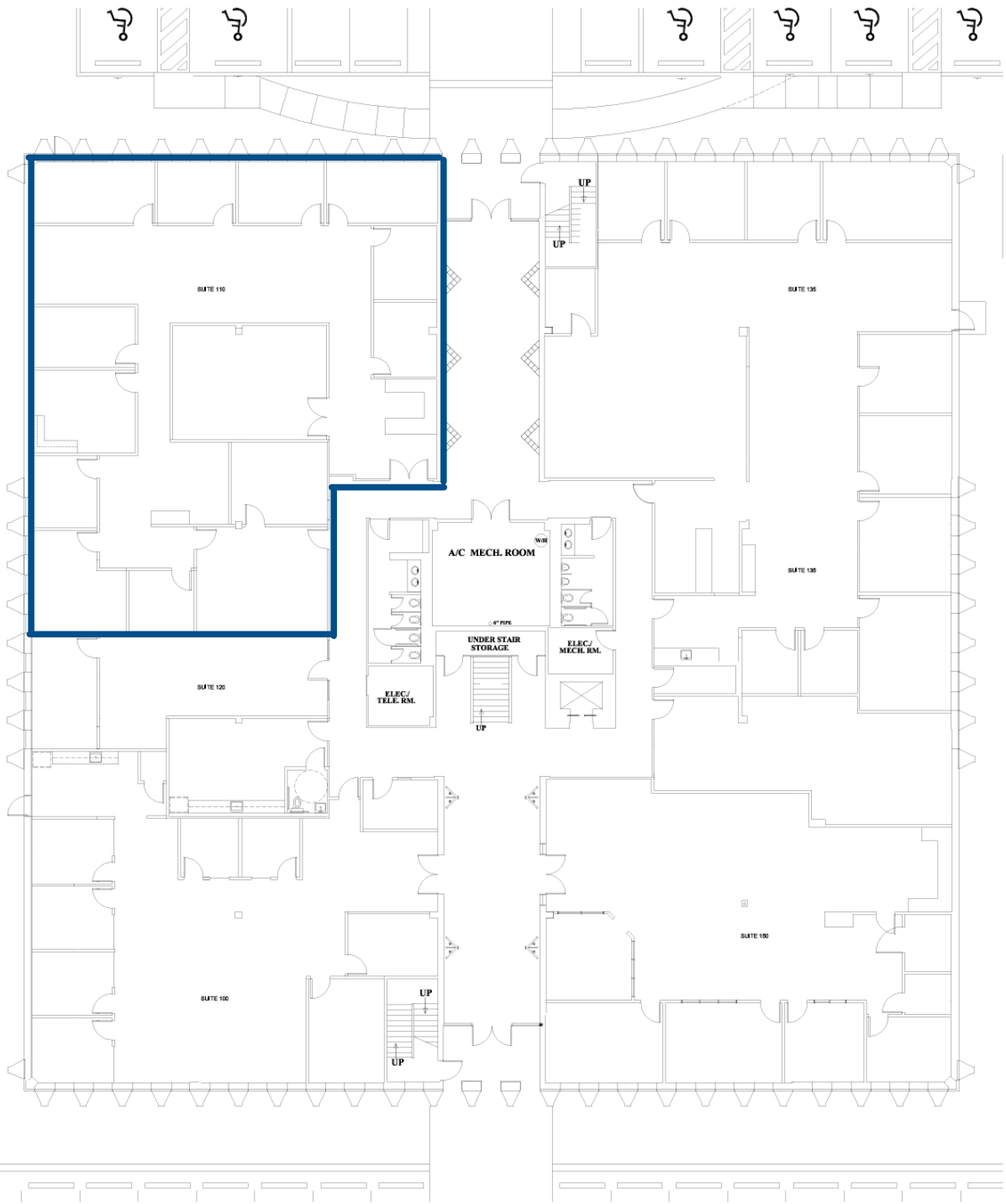
CENTRALLY LOCATED IN THE WESTSHORE BUSINESS DISTRICT

Excellent Access to I-275, Veterans Expressway, I-4, and Hwy 60



SUITE 110
4,959 SF





First Floor - 1300 Westshore

1907 E. 7th Avenue
 Tampa, Florida 33605
 Ph: 813 . 247 . 3332
 Web: www.aicoll.com

Existing Floor Plan

1300 N Westshore Blvd

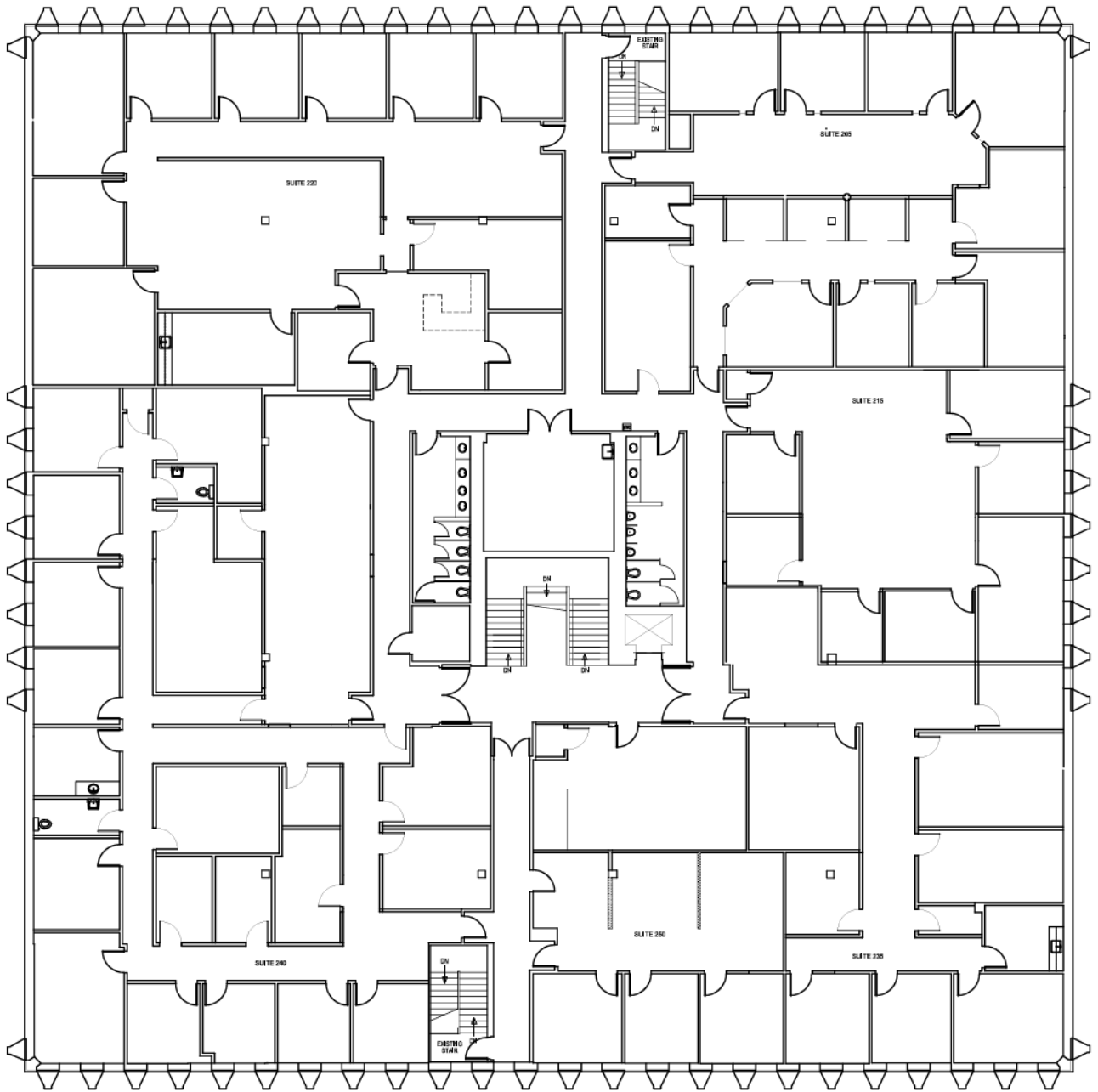
I:\Westshore1300\24477 Asbuilts and Restrooms\Schematics\1/8" = 1'-0"

1 of 1

12.19.2024



A 1R



Second Floor - 1300 Westshore

1907 E. 7th Avenue
 Tampa, Florida 33605
 Ph: 813.247.3332
 Web: www.aicoll.com

Existing Floor Plan

1300 N Westshore Blvd

I:\Westshore1300\24477 Asbults and Restrooms\Schematics 1/8" = 1'-0"

1 of 1



12.19.2024

A 2R