

SECOND-GENERATION
RESTAURANT SPACES

52-60 EAST OHIO

PRIME RIVER NORTH LOCATION

CHICAGO, IL



SHOPS AT
NORTH BRIDGE



SHOPS AT NORTH BRIDGE - 56-60 EAST OHIO STREET

NEW OWNERSHIP AND REPRESENTATION (CBRE)

2ND GENERATION RESTAURANT OPPORTUNITIES IN THE HEART OF RIVER NORTH

+3 MILLION PEDESTRIANS AND VEHICLES PASS BY THE SITE MONTHLY

FLEXIBLE SIZING, SPACES RANGING FROM SMALL SHOP TO 9,853 SF

LESS THAN ONE BLOCK THE MAGNIFICENT MILE AND BALLY'S CASINO

SECOND-GENERATION RESTAURANT OPPORTUNITY



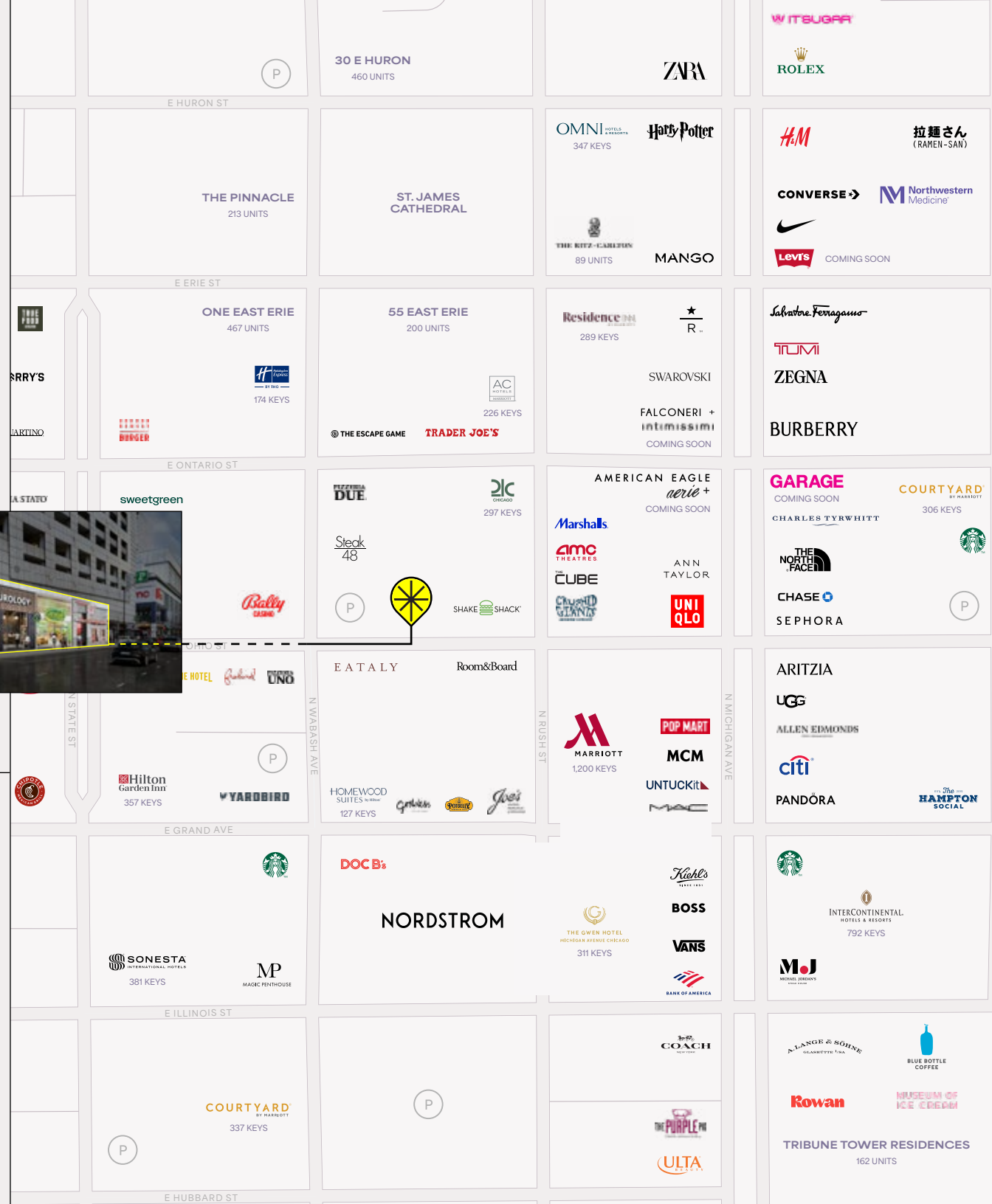
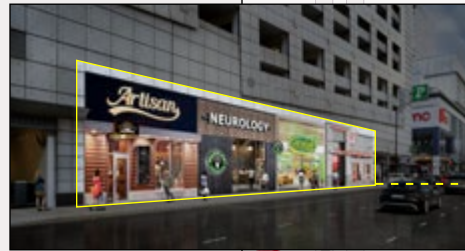


JOIN THESE TOP BRANDS

Discover exceptional restaurant opportunities in one of Chicago's most vibrant neighborhoods. These flexible spaces range from 1,940 to 9,853 SF, ideal for a variety of concepts and sizes.

Located directly across from Eataly, Room & Board, and the iconic original Uno, and just steps from the Magnificent Mile and the new Bally's Casino.

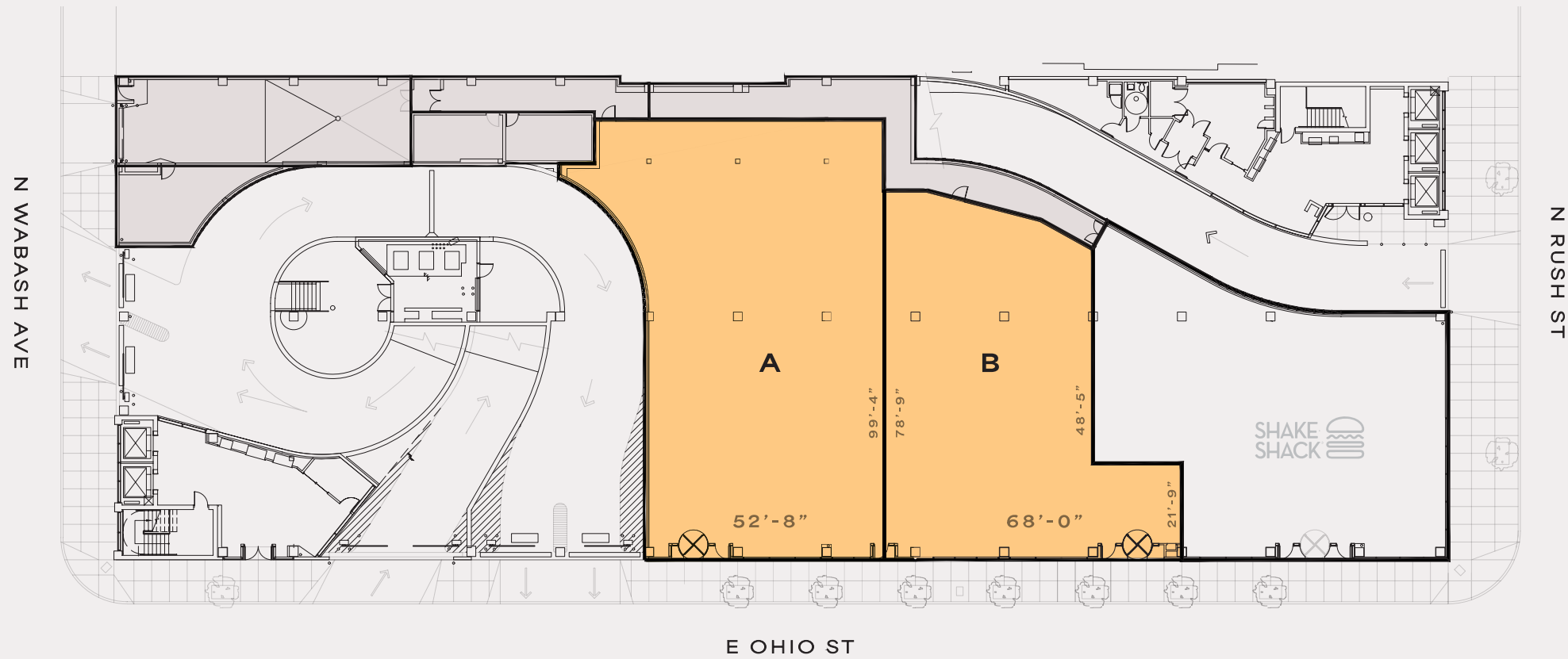
High foot traffic and unmatched visibility in a premier dining and retail corridor.





FLOOR PLANS

TWO-TENANT DEMISING



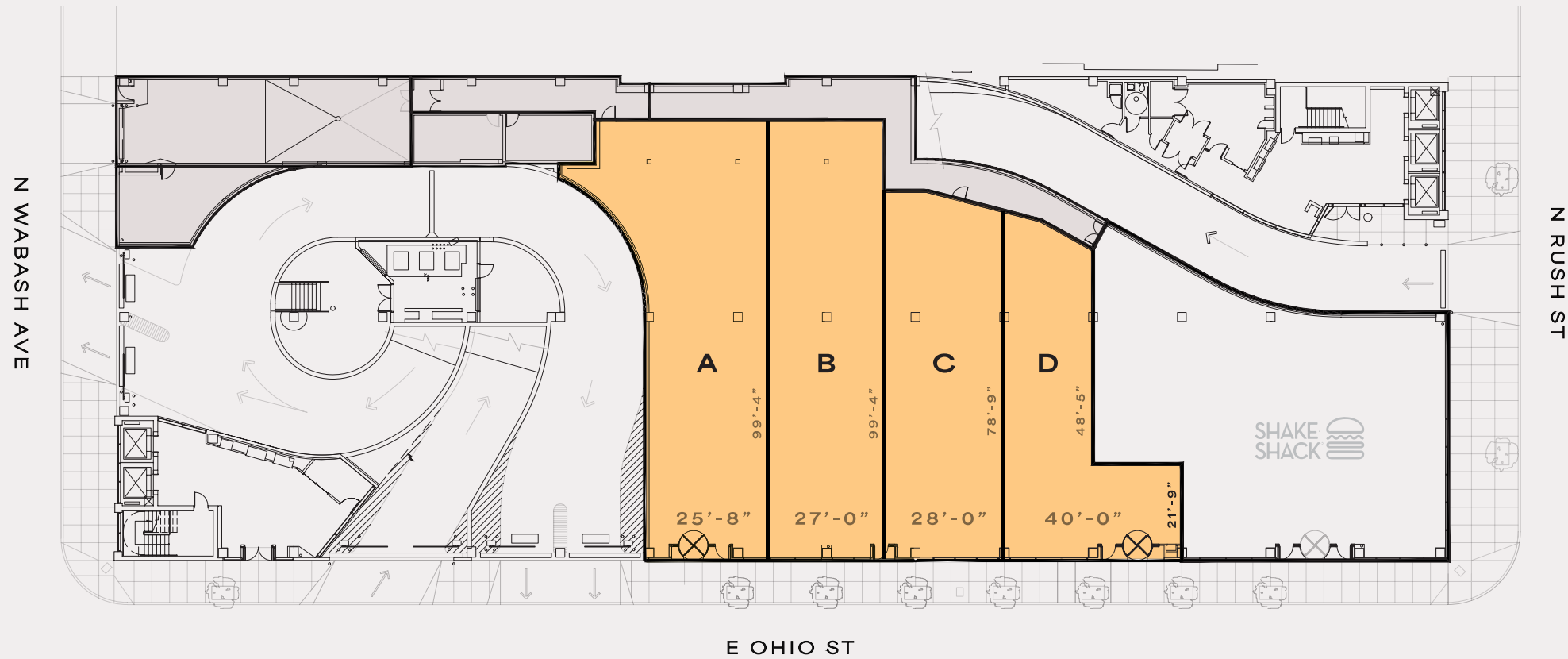
SPACE A: ±5,702 SF

SPACE B: ±4,151 SF



FLOOR PLANS

FOUR-TENANT DEMISING



SPACE A: ±2,921 SF

SPACE B: ±2,781 SF

SPACE C: ±2,211 SF

SPACE D: ±1,940 SF



PREMIER RIVER NORTH OPPORTUNITY

RIVER NORTH

Is a vibrant neighborhood known for its **lively nightlife, upscale dining, and rich cultural scene**. River North continues to draw both domestic and international visitors, contributing to the overall tourism boom in Chicago.

DEMOGRAPHICS

1 Mile Radius

457,000

Daytime Population

111,344

Residential Population

\$186,914

Average Household Income

OVER 35 HOTELS

± 9,000 keys - within 1 Mile



THE LANGHAM
CHICAGO

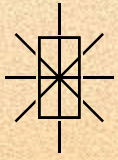
THE PENINSULA
CHICAGO

PARK HYATT®

*(Source: Placer.ai, a leading provider of location analytics and foot traffic data).

SHOPS AT NORTH BRIDGE - 56-60 EAST OHIO STREET





SHOPS AT NORTH BRIDGE

LUKE MOLLOY

+1 312 935 1905 | luke.molloy@cbre.com

DANNY JACOBSON

+1 312 935 1901 | danny.jacobson@cbre.com

STEPHEN ANSANI

+1 312 935 1907 | stephen.ansani@cbre.com

MICHAEL MALEN

+1 312 334 7232 | michael.malen@cbre.com

