



Professional Office Suite Available 7 - 9 Kirby Plz | Mount Kisco, NY

Contact

George Arco 914.760.3384 George@princetonrealtygroup.com

January 2026

Executive Summary



OFFERING SUMMARY

COUNTY	Westchester
BUILDING SIZE	4,000 SF
BUILDING CLASS	B
AVAILABLE SF	827 SF
LOT SIZE	2,374 SF
ZONING	CB-1
TERMS	\$1,700 Mo. + electric/gas
AVAILABILITY	Immediate

PROPERTY OVERVIEW

Available for Lease: Well-appointed second-floor professional office suite totaling 827 ± sq. ft. The space features a functional layout with a main open office area and two private offices, ideal for a variety of professional uses. Bright and efficient floor plan in a quiet professional setting. Tenant responsible for electric and gas.

LOCATION OVERVIEW

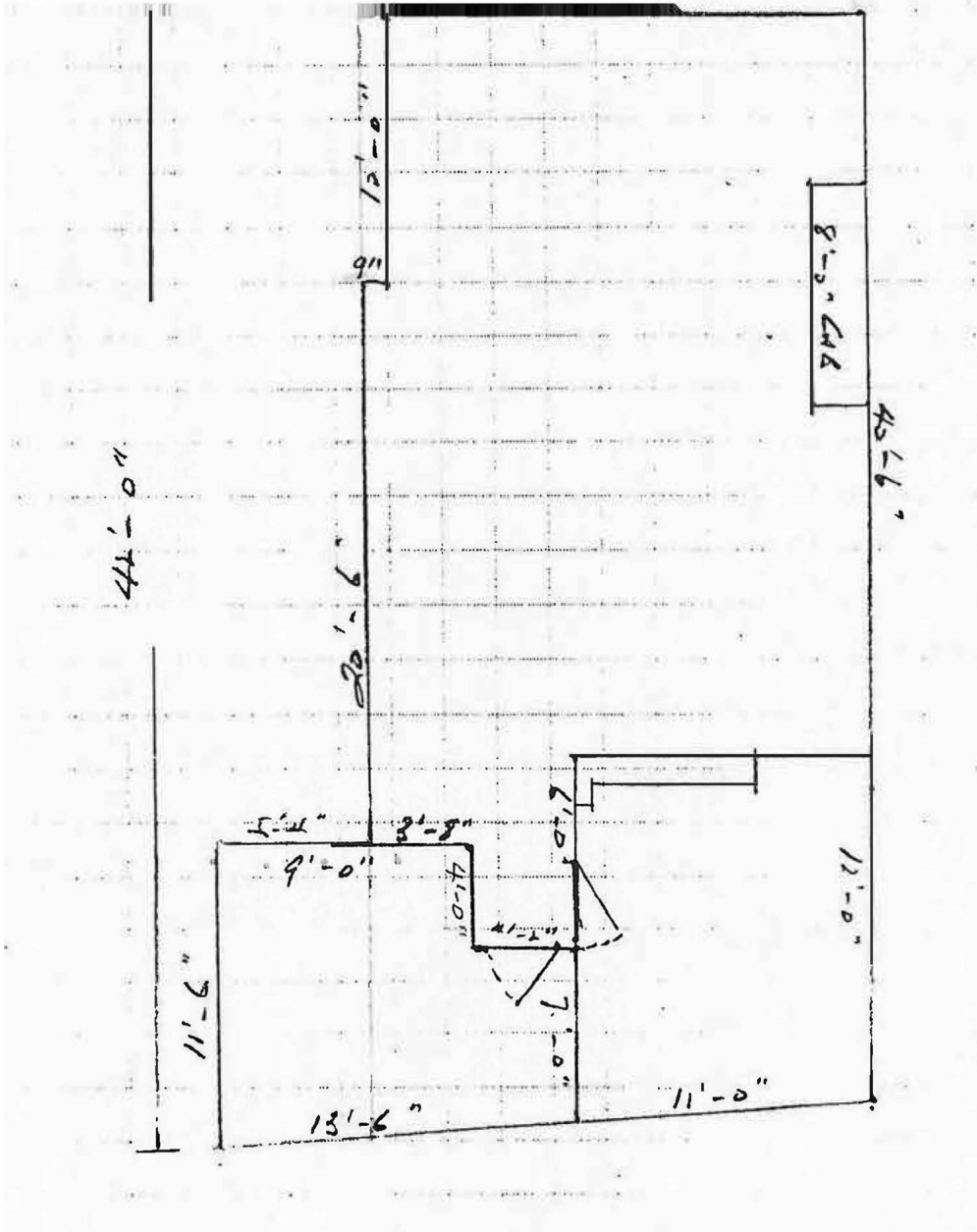
Discover the vibrant community surrounding the property in Mount Kisco, NY. This bustling town offers a charming downtown area with diverse dining options, boutique shops, and cultural attractions. Additionally, the property is conveniently located near major highways (Saw Mill River Parkway and I-684) and public transportation with Metro North across the street.

ALL INFORMATION IS FROM SOURCES DEEMED RELIABLE AND IS SUBMITTED SUBJECT TO ERRORS, OMISSIONS, CHANGE OF PRICE, RENTAL, PRIOR SALE AND WITHDRAWAL WITHOUT NOTICE.

Additional Photos



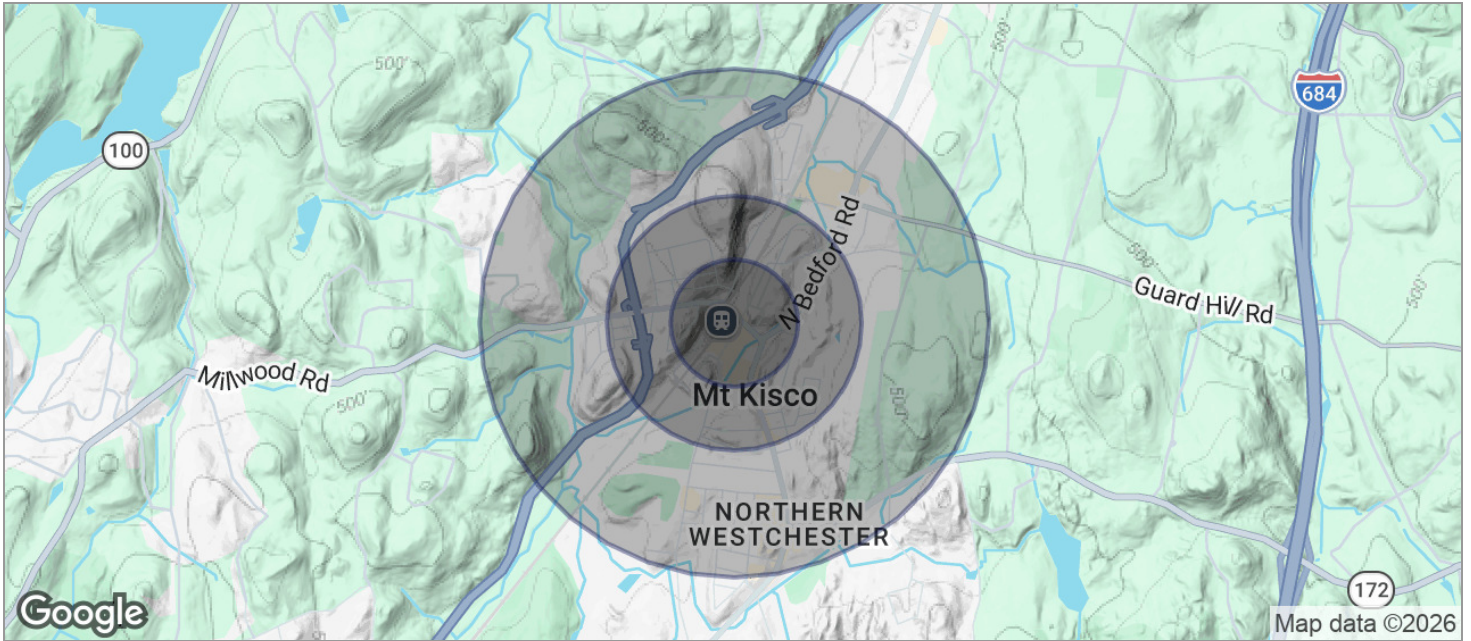
Additional Photos



Location Maps



Demographics Map



POPULATION	0.25 MILES	0.5 MILES	1 MILE
TOTAL POPULATION	1,322	3,982	9,332
MEDIAN AGE	41.5	42.2	41.4
MEDIAN AGE (MALE)	41.2	42.2	40.6
MEDIAN AGE (FEMALE)	41.4	40.9	42.2
HOUSEHOLDS & INCOME	0.25 MILES	0.5 MILES	1 MILE
TOTAL HOUSEHOLDS	544	1,584	3,545
# OF PERSONS PER HH	2.4	2.5	2.6
AVERAGE HH INCOME	\$104,056	\$115,665	\$134,667
AVERAGE HOUSE VALUE	\$268,061	\$367,066	\$478,762

* Demographic data derived from 2020 ACS - US Census