

COMMERCIAL LEASE OPPORTUNITY

RIGHT SPACE | RIGHT PLACE



Empire Towers II

4141 Inland Empire Blvd., Ontario, CA 91764

PRESENTED BY

Michael G. Rademaker

President / Broker

909-579-1340

DRE Lic #00556679

Lynn Yangchana, CCIM

Vice President

909-579-1399

DRE Lic #01518762

MGR
Real Estate

Features:

- +/- 70,040 SF, 3-Story, Class A Office Building
- Premiere Ontario Airport Submarket Location
- Prominent I-10 Freeway Visibility
- Built in 1999; Zoning: SP, City of Ontario
- Immediate Access to I-10, at Haven Avenue
- Close Proximity to I-15 and 60 Freeways
- 4/1,000 Parking; Reserved Parking Available
- Card Key Security System; Full Service Gross Leases
- Professionally Managed and Maintained

Commercial | Residential | Property Management

UPLAND 909-981-4466

VICTORVILLE 760-955-7888

COLTON 909-503-1500

www.mgrrealestate.com

DRE ID# 01841921

All items on this page are deemed to be accurate, but should be viewed as reference only. MGR Real Estate, Inc. does not warranty/guaranty the validity of any information on this page.



Empire Towers II - Offices for Lease

4141 Inland Empire Blvd., Ontario, CA 91764			
Floor / Suite #	R.S.F	Description	Status
2 nd / 260	1,639	Reception, 2 offices, conference room, storage and breakroom	Available



For more information, contact:

Michael G. Rademaker
Founder / Broker | Lic. #00556679
Office Direct: 909-579-1340

Lynn Yangchana
Vice President, CCIM | Lic. #01518762
Office Direct: 909-579-1399

*All items on this page are deemed to be correct but should be viewed as reference only. MGR Real Estate, Inc. does not warranty/guaranty the validity of any information on this page.

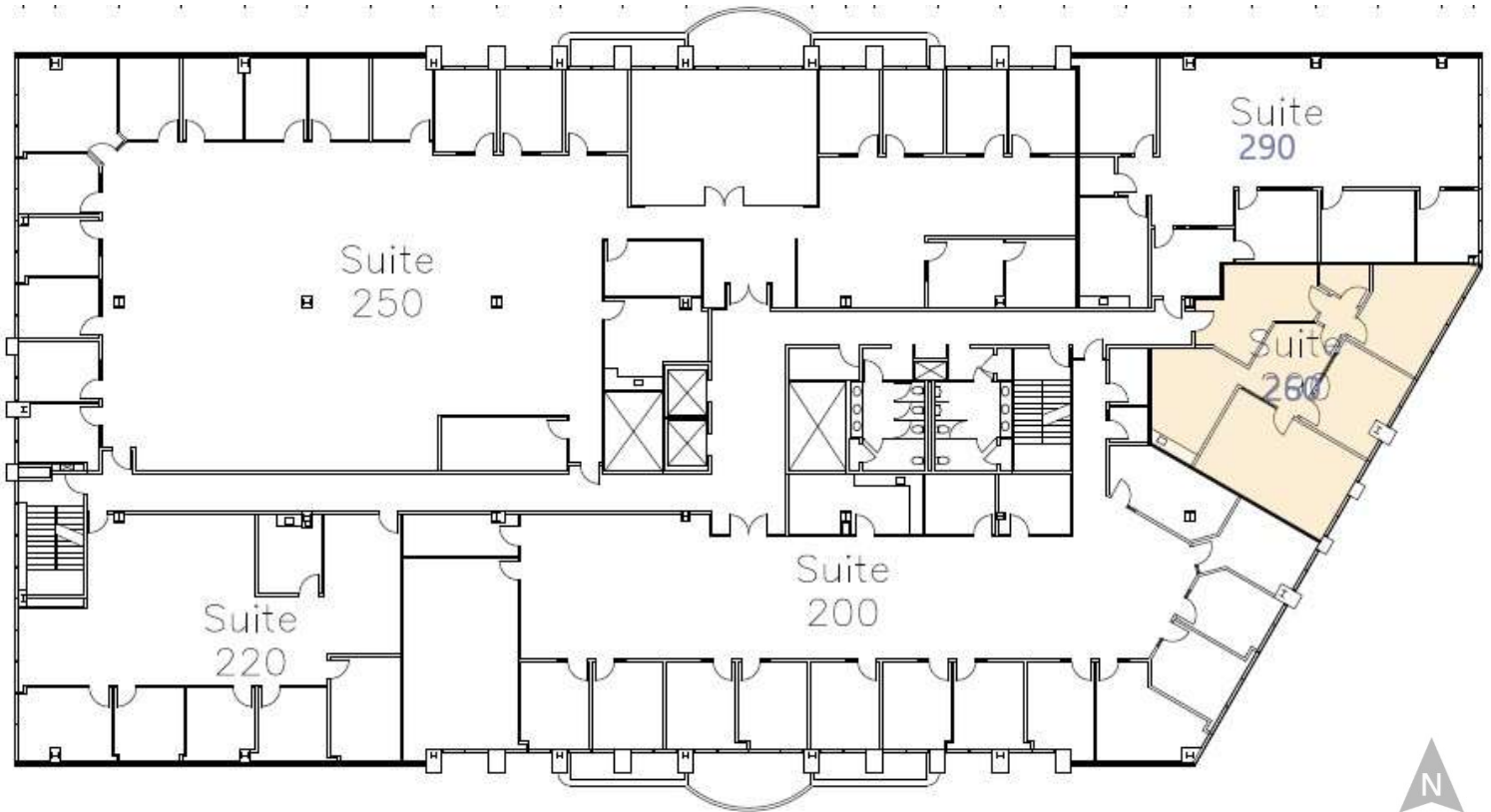
MGR Real Estate Inc. 3800 Concourse, Suite 100, Ontario, California 91764 | Office: 909-981-4466 / Fax: 909-981-6267

Commercial Brokerage • Residential Real Estate • Property Management
Ontario-909-581-6600 Victorville-760-955-7888 Carlsbad-760-683-8102

WWW.MGRREALESTATE.COM | Lic. #01841921

Empire Towers II
4141 Inland Empire Blvd., Ontario, CA
2nd Floor Suite(s) For Lease

Suite 260: 1,639 RSF (Available)



For more information, contact:

Michael G. Rademaker
Founder / Broker | Lic. #00556679
Office Direct: 909-579-1340

Lynn Yangchana
Vice President, CCIM | Lic. #01518762
Office Direct: 909-579-1399

Commercial & Residential Real Estate
Corporate: 3800 E Concourse St., Suite 350, Ontario, California 91764 | Office: 909-981-4466 / Fax: 909-981-6267
Ontario • Victorville • Costa Mesa • Irvine • Carlsbad • Rancho Mirage
www.mgrealstate.com • DRE #. #01841921