

# THE FEATHERSTONE BUILDING

FURNISHED + FLEXIBLE

The Featherstone Building is a 126,700 sq ft industrial-inspired workspace with a contemporary finish, located in the heart of the Old Street district. **9,724 sq ft of Furnished + Flexible office space on the second floor is the last remaining unit in the building.**



Sixty Six City Road, Old Street ECI



## Key features


- Situated next to **Old Street Underground station** and close to the Elizabeth line, accessed via Moorgate
- Beautifully designed **double-height reception** with 7.5m floor-to-ceiling height
- Integrated café, **DL/Service**
- **DL/Members Lounge, DL/28** over ground and lower ground floors totalling 13,400 sq ft
- **Communal roof terrace** on the 10th floor including a covered pavilion
- **Lower ground cycle store** for 202 cycle spaces and 84 folding cycles
- 222 **lockers** and 21 **showers**
- **3.125m floor-to-ceiling height** on all floors
- **Openable windows** throughout and exposed concrete ceilings
- Elegant external architecture using a natural brick palette
- An **Intelligent Building** that delivers for the digital future
- **Concrete core cooling** system allows an industrial aesthetic
- Achieved **net zero carbon** construction on completion
- Achieved **EPC Rating 'A'**
- Achieved **WiredScore Gold**
- Achieved **SmartScore Platinum**
- Achieved **AirScore Design & Operation Gold**
- Achieved **BREEAM Outstanding**
- Achieved **LEED Platinum**



The Featherstone Building from Bunhill Fields

Part second floor: 9,724 sq ft / 903 sq m

 100 x fitted desks

 3 x 10-person private meeting rooms  
1 x 6-person private meeting rooms

 26 x hot desks


 Reception and waiting area

 2 x private phone booths

 Teapoint

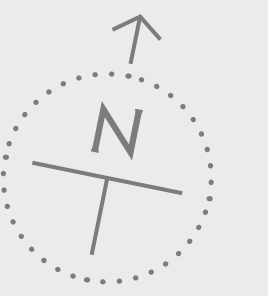
 Breakout spaces


WC On-floor WCs

 Cabled and enabled with high-speed fibre

FURNISHED \* FLEXIBLE \*

FEATHERSTONE STREET



-  Fitted desks
-  Collaboration / hot desks
-  Meeting rooms
-  Breakout spaces
-  Phone booths
-  Teapoint
-  Reception
-  Print & comms hub
-  Common parts



CITY ROAD



Reception and breakout spaces



Bright, open plan workspace



Teapoint and seating area



Light-filled breakout spaces



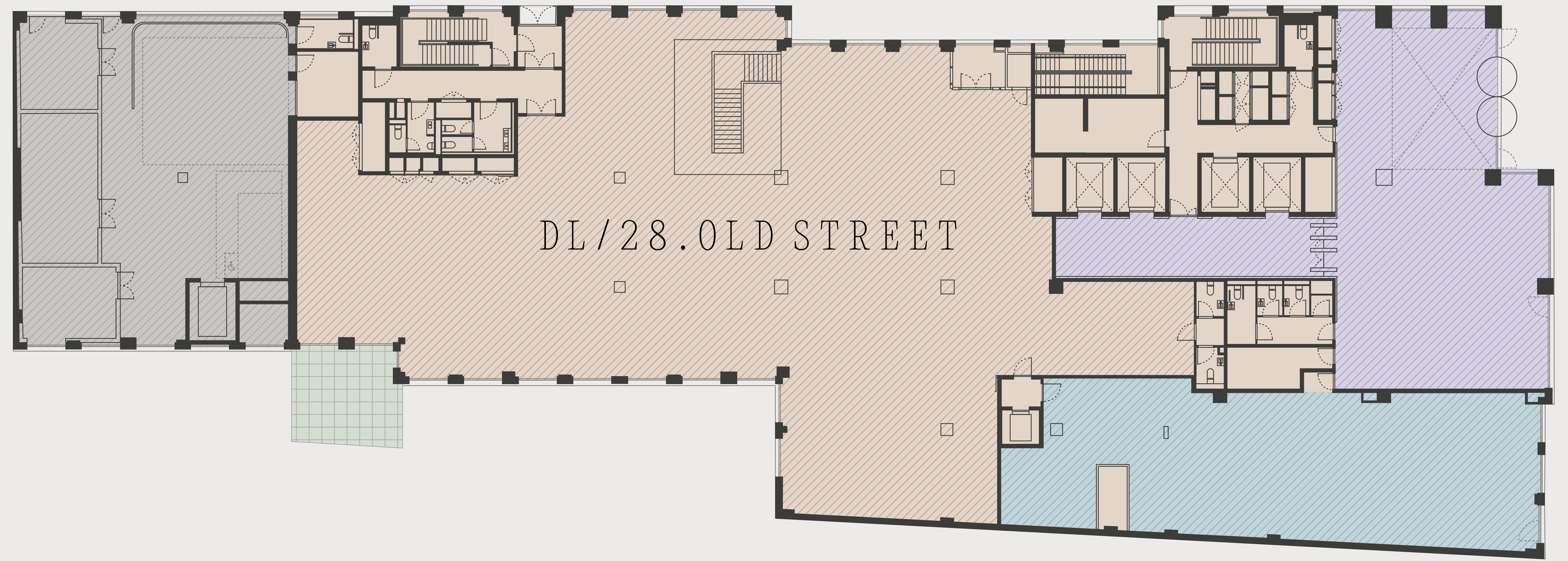
Spacious private meeting room

# Ground floor layout

FEATHERSTONE STREET



- Reception & café, DL/ Service
- Retail
- DL/Lounge, DL/28
- Loading bay
- Common parts
- Private terrace



Reception



DL/Service



Drop-in working at DL/28

## Agents

### Compton

**Shaun Simons**  
ss@compton.london  
07788 423 131

**Michael Raibin**  
mr@compton.london  
07880 795 679

**Sarah Hill**  
sh@compton.london  
07936 338 774

### Knight Frank

**William Foster**  
william.foster@knightfrank.com  
07748 985 951

**Toby Pritchard-Davies**  
toby.pritchard-davies@knightfrank.com  
07468 724 284

**Marina Campbell**  
marina.campbell@knightfrank.com  
07814 067 404

**Francesca Skinner**  
francesca.skinner@knightfrank.com  
07866 191 140

[thefeatherstonebuilding.london](https://www.thefeatherstonebuilding.london)

Whilst every effort has been made to ensure accuracy, no responsibility is taken for any error, omission or mis-statement in these particulars, which do not constitute an offer or contract. No representation or warranty whatever is made or given either during negotiations or in particular by the vendor, lessors or agents Messrs Compton and Knight Frank. All figures are exclusive of rates, service charge, VAT and all other outgoings. The agents have not tested the services. All floor areas are approximate.

Date of preparation September 2025

**DERWENT  
LONDON**



Communal roof terrace and pavilion