

Office Space

AVAILABLE FOR LEASE

9201 Camino Media

Bakersfield, CA

Property Highlights

- Located in the highly desirable University Centre Submarket
- Second floor space available
- Professionally maintained and managed by M.D. Atkinson Co., Inc
- Located just west of the Marketplace
- Neighbors include Chevron, CRC, AERA, Morgan Stanley, UBS, etc




TWO UNIVERSITY
CENTRE

The information contained herein may have been obtained from sources other than ASU Commercial. We have not verified such information and make no guarantees, warranties or representations about such information. It is your responsibility to independently confirm its accuracy and completeness prior to purchasing/leasing the property.



Martin J. Starr • Principal • 661 616 3567 • mjstarr@asuassociates.com • CA RE #01179469
Matthew E. Starr, SIOR, CCIM • Principal • 661 616 3570 • matthew@asuassociates.com • CA RE #01367855
11601 Bolthouse Drive Suite 110 • Bakersfield, CA 93311 • 661 862 5454 main • 661 862 5444 fax

Office Space Available For Lease

Second Floor Availability | Floor Plan

9201 Camino Media - Bakersfield, CA

Availability

- Suite 210

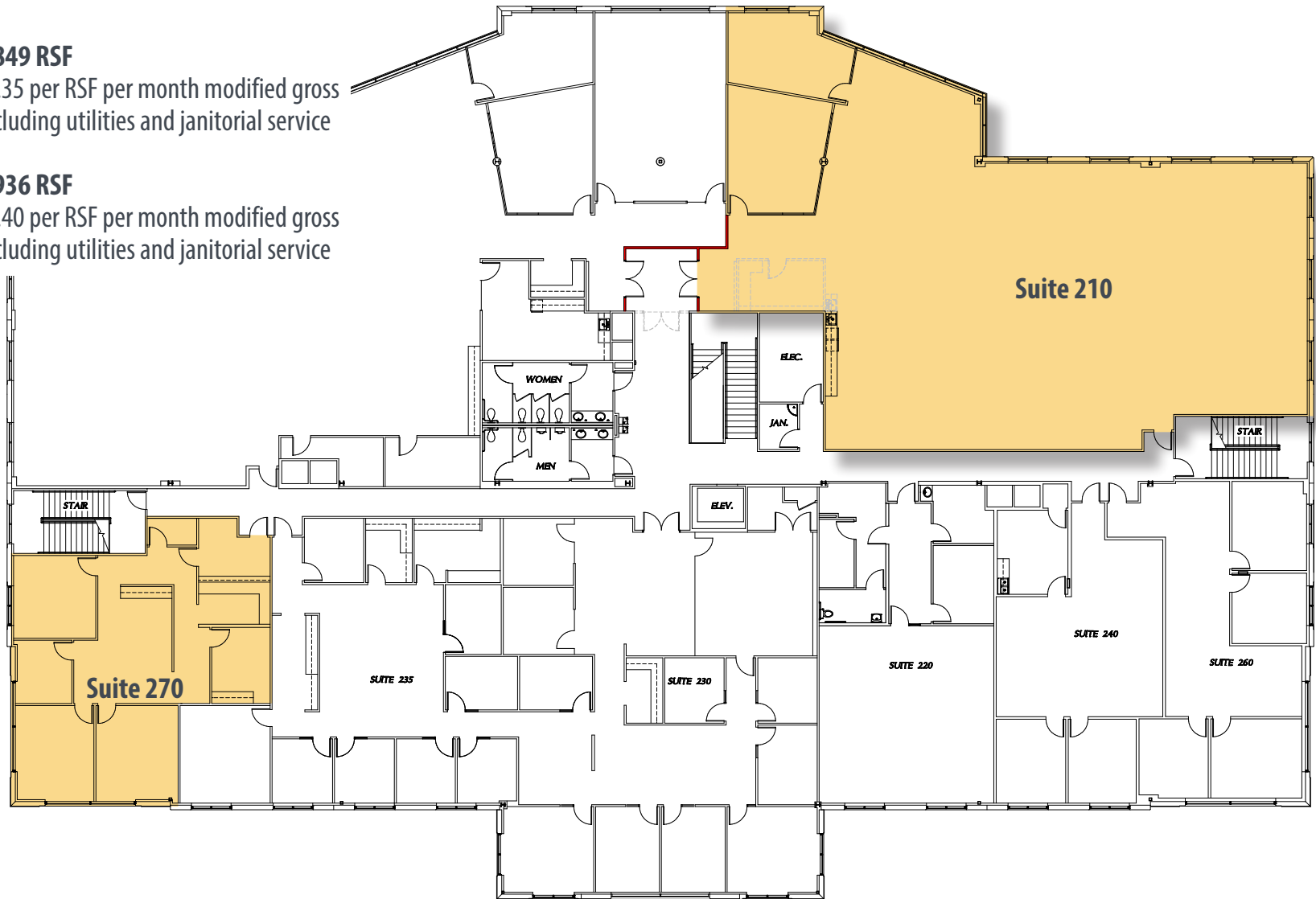
5,849 RSF

\$2.35 per RSF per month modified gross excluding utilities and janitorial service

- Suite 270

1,936 RSF

\$2.40 per RSF per month modified gross excluding utilities and janitorial service



*Plans deemed to be accurate, but not guaranteed. Plan not to scale.

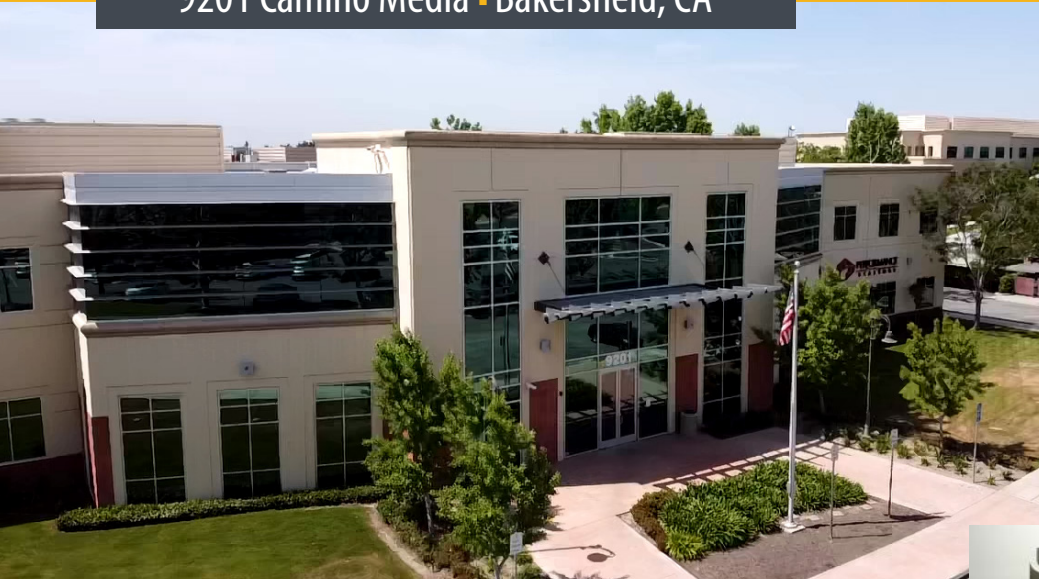


Martin J. Starr • Principal • 661 616 3567 • mjstarr@asuassociates.com • CA RE #01179469
Matthew E. Starr, SIOR, CCIM • Principal • 661 616 3570 • matthew@asuassociates.com • CA RE #01367855
11601 Bolthouse Drive Suite 110 • Bakersfield, CA 93311 • 661 862 5454 main • 661 862 5444 fax

Office Space Available For Lease

Property Photos

9201 Camino Media - Bakersfield, CA



Martin J. Starr • Principal • 661 616 3567 • mjstarr@asuassociates.com • CA RE #01179469
Matthew E. Starr, SIOR, CCIM • Principal • 661 616 3570 • matthew@asuassociates.com • CA RE #01367855
11601 Bolthouse Drive Suite 110 • Bakersfield, CA 93311 • 661 862 5454 main • 661 862 5444 fax

Office Space Available For Lease

Aerial Photo Facing Southeast

9201 Camino Media - Bakersfield, CA



Martin J. Starr • Principal • 661 616 3567 • mjstarr@asuassociates.com • CA RE #01179469
Matthew E. Starr, SIOR, CCIM • Principal • 661 616 3570 • matthew@asuassociates.com • CA RE #01367855
11601 Bolthouse Drive Suite 110 • Bakersfield, CA 93311 • 661 862 5454 main • 661 862 5444 fax

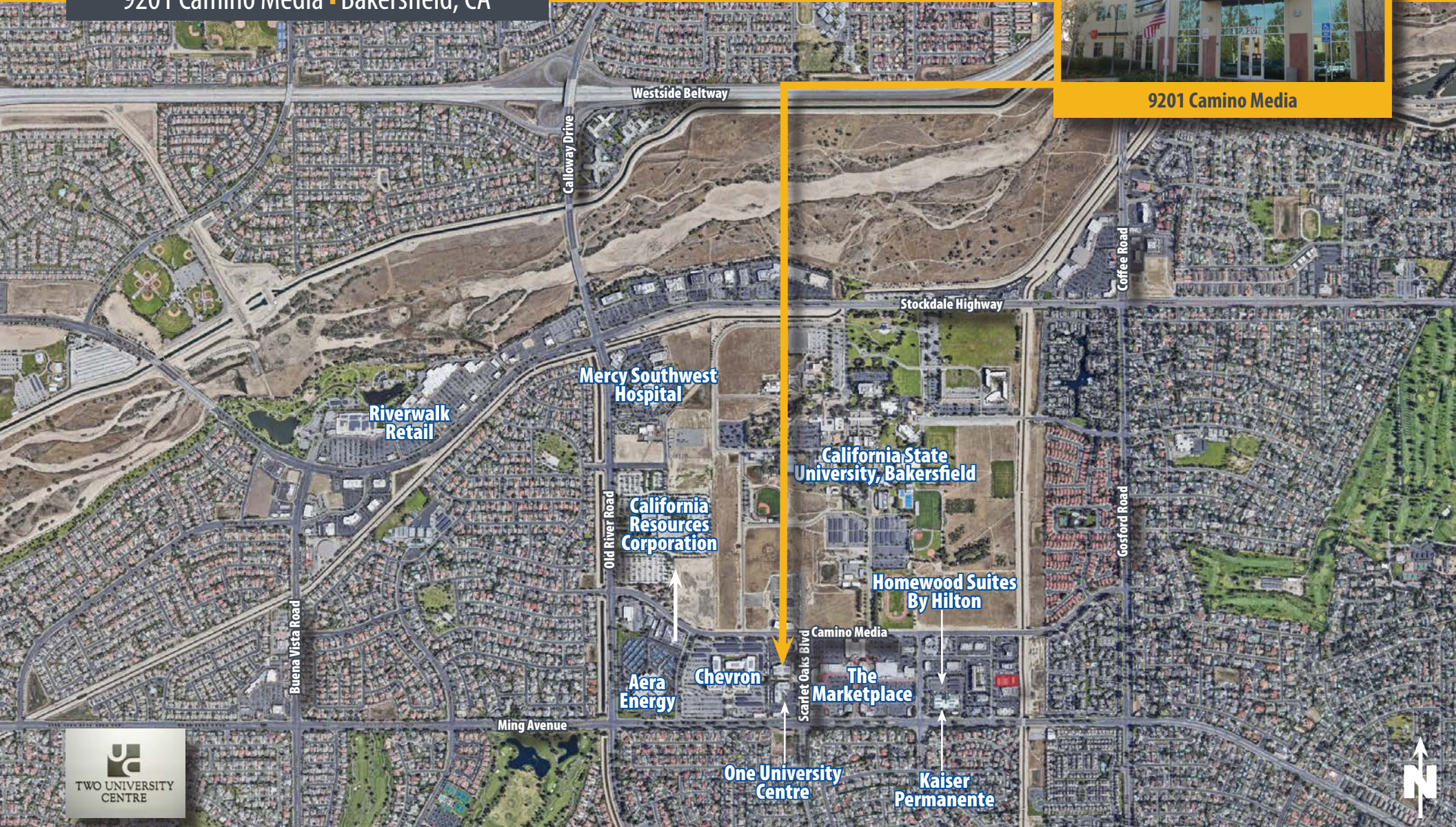
Office Space Available For Lease

Aerial of University Centre Submarket

9201 Camino Media - Bakersfield, CA



9201 Camino Media



Martin J. Starr • Principal • 661 616 3567 • mjstarr@asuassociates.com • CA RE #01179469
Matthew E. Starr, SIOR, CCIM • Principal • 661 616 3570 • matthew@asuassociates.com • CA RE #01367855
11601 Bolthouse Drive Suite 110 • Bakersfield, CA 93311 • 661 862 5454 main • 661 862 5444 fax

