

# INDUSTRIAL SUITE **FOR LEASE**

42327 RIO NEDO, SUITE A - TEMECULA, CA

## RIO NEDO INDUSTRIAL CENTER

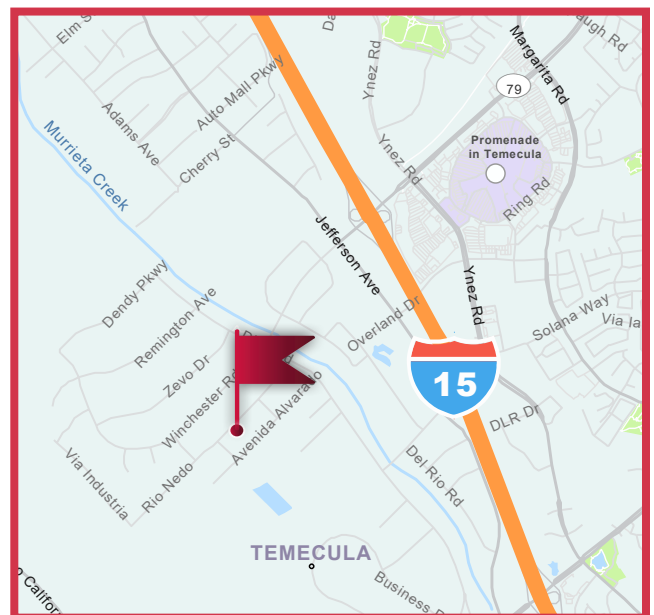


### FEATURES:

- ±9,436 SF
- Approximately 3,000 SF of Improved Office
- 20' Clear Height
- 400 Amps 277/480 V
- On Lockbox
- Immediate Occupancy

### LEASE RATE:

**\$1.35 PSF/MONTH AIR MG**



**LEE & ASSOCIATES**  
COMMERCIAL REAL ESTATE SERVICES

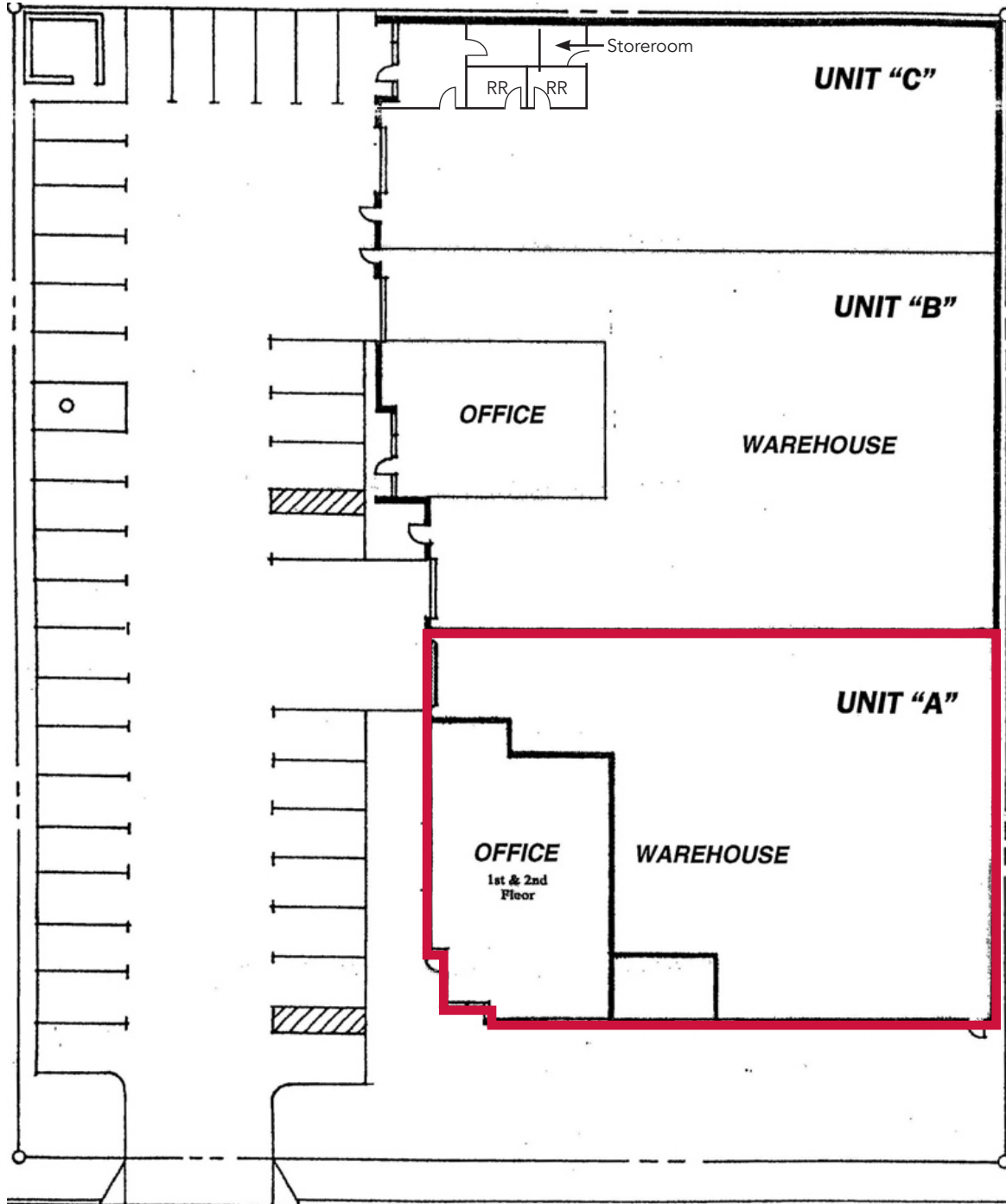
**JIM NADAL, CCIM**  
**951.445.4520**  
jnadal@leetemecula.com  
DRE #01040679

No warranty or representation has been made to the accuracy of the foregoing information. Terms of sale or lease and availability are subject to change or withdrawal without notice. Lee & Associates Commercial Real Estate Services, Inc. - Riverside. 25240 Hancock Avenue, Suite 100 - Murrieta, CA 92562 Corporate ID# 01048055

# INDUSTRIAL SUITE **FOR LEASE**

42327 RIO NEDO, SUITE A - TEMECULA, CA

**RIO NEDO**  
INDUSTRIAL CENTER



# INDUSTRIAL SUITE **FOR LEASE**

42327 RIO NEDO, SUITE A - TEMECULA, CA

## RIO NEDO INDUSTRIAL CENTER



**LEE & ASSOCIATES**  
COMMERCIAL REAL ESTATE SERVICES

**JIM NADAL, CCIM**  
**951.445.4520**  
jnadal@leetemecula.com  
DRE #01040679

No warranty or representation has been made to the accuracy of the foregoing information. Terms of sale or lease and availability are subject to change or withdrawal without notice. Lee & Associates Commercial Real Estate Services, Inc. - Riverside. 25240 Hancock Avenue, Suite 100 - Murrieta, CA 92562 Corporate ID# 01048055