

2001 JUNIPERO SERRA BLVD SUITE 900

DALY CITY, CA 94014



OFFICE & LAB SUBLEASE | AVAILABLE NOW

Approx. 10,000-13,000 RSF

HUGHESMARINO

BUILDING INFORMATION



ADDRESS

2001 Junipero Serra Blvd,
Suite 900
Daly City, CA 94014

AVAILABLE

Now

ASKING RATE

\$4.95 PSF NNN PER MONTH

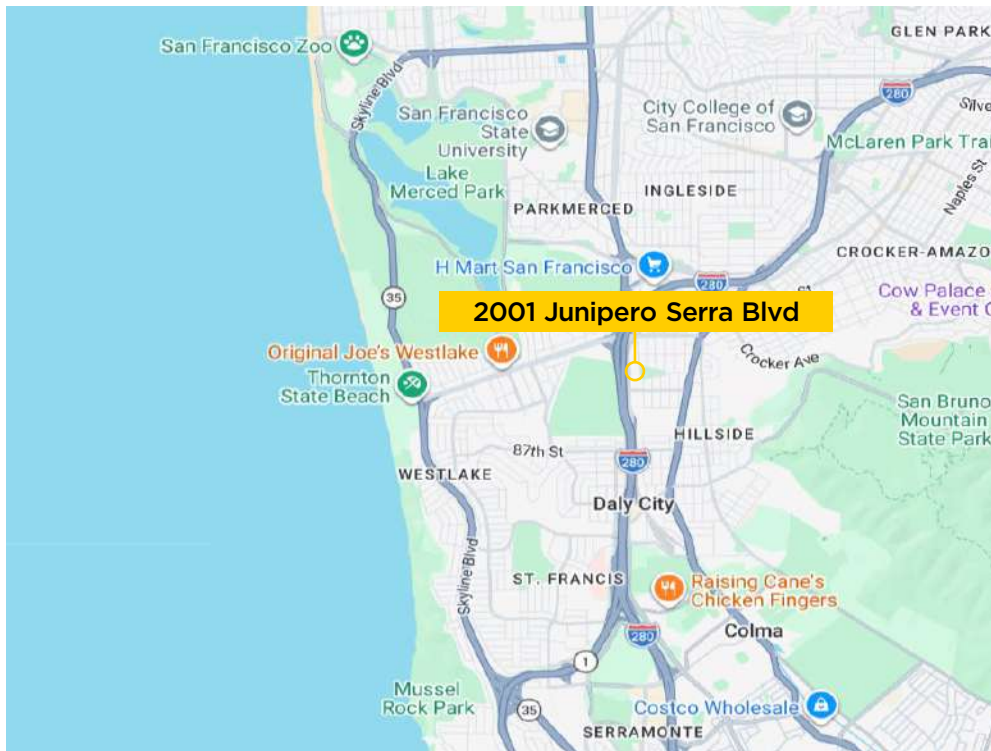
AVAILABLE THROUGH

December 31, 2033
Flexible term available
3-7 years

SPACE HIGHLIGHTS

- Office and lab space
- Outdoor views
- Approx. 10,000 - 13,000 SF available

LOCATION HIGHLIGHTS



FREWAY ACCESS



RETAIL & RESTAURANTS



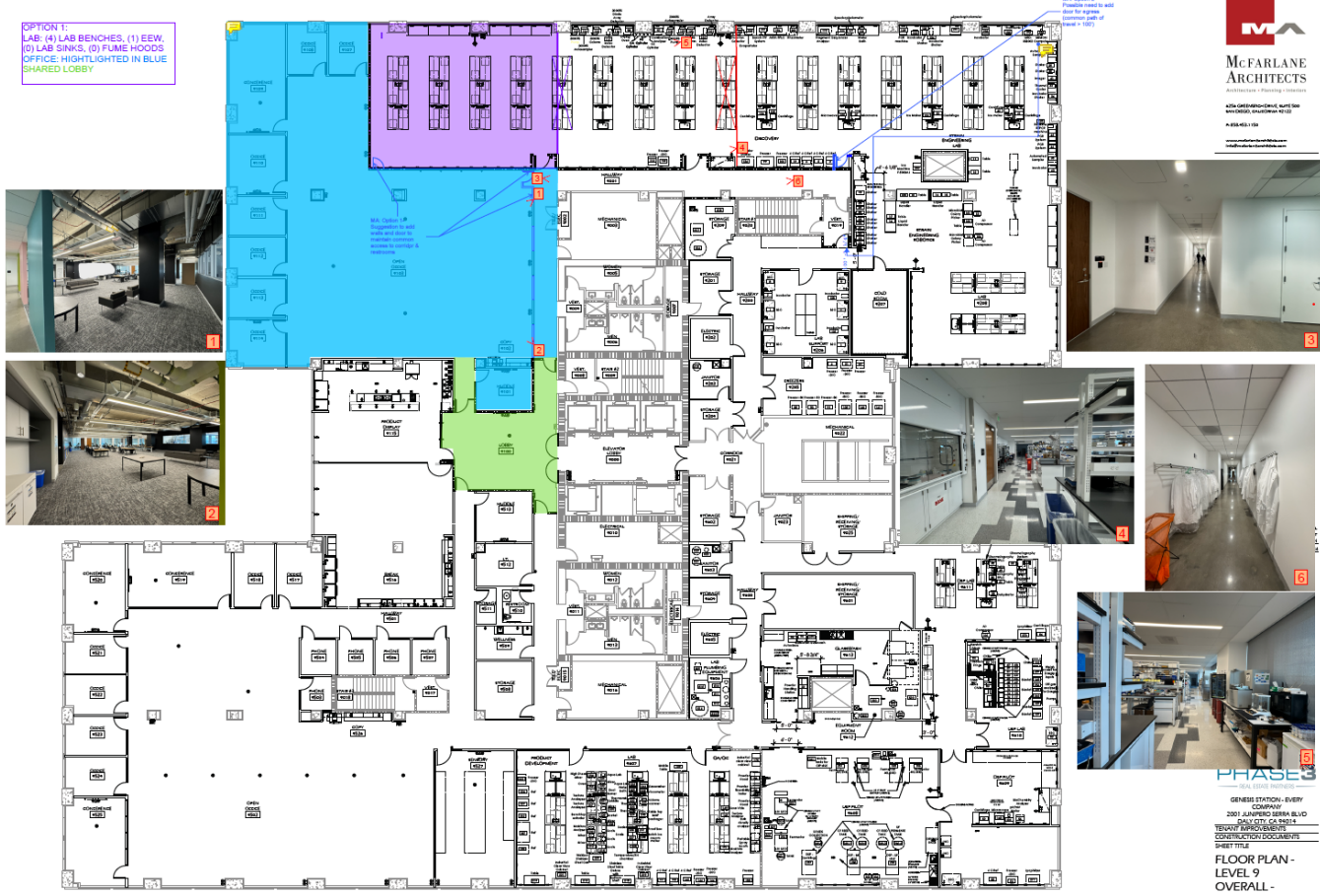
KEY HIGHLIGHTS

- Excellent I-280 access and visibility
- Abundant Retail & Restaurant Amenities at Serramonte Center & Westlake Shopping Center
- Walking Distance to Daly City BART Station
- Less than 15 Minutes to San Francisco International Airport (SFO)
- Less than 20 Minutes to Downtown San Francisco

FLOOR PLAN OPTION 1

OPTION 1:
LAB: (4) LAB BENCHES, (1) EEW,
(0) LAB SINKS, (0) FUME HOODS
OFFICE: HIGHLIGHTED IN BLUE
SHARED LOBBY

PHASE 3 REAL ESTATE SERVICES
 2001 JUMPING BEAN BLVD
 SUITE 200
 SAN JOSE, CA 95131
 TEL: 415.435.1100
 WWW.PHASE3REALTY.COM



FLOOR PLAN - LEVEL 9 OVERALL - TENANT FURNISHINGS
1/8" = 1'-0"



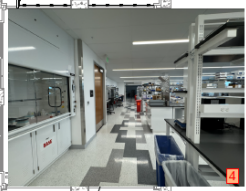
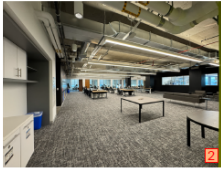
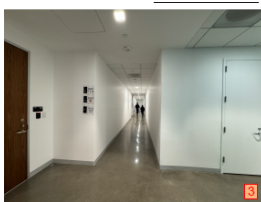
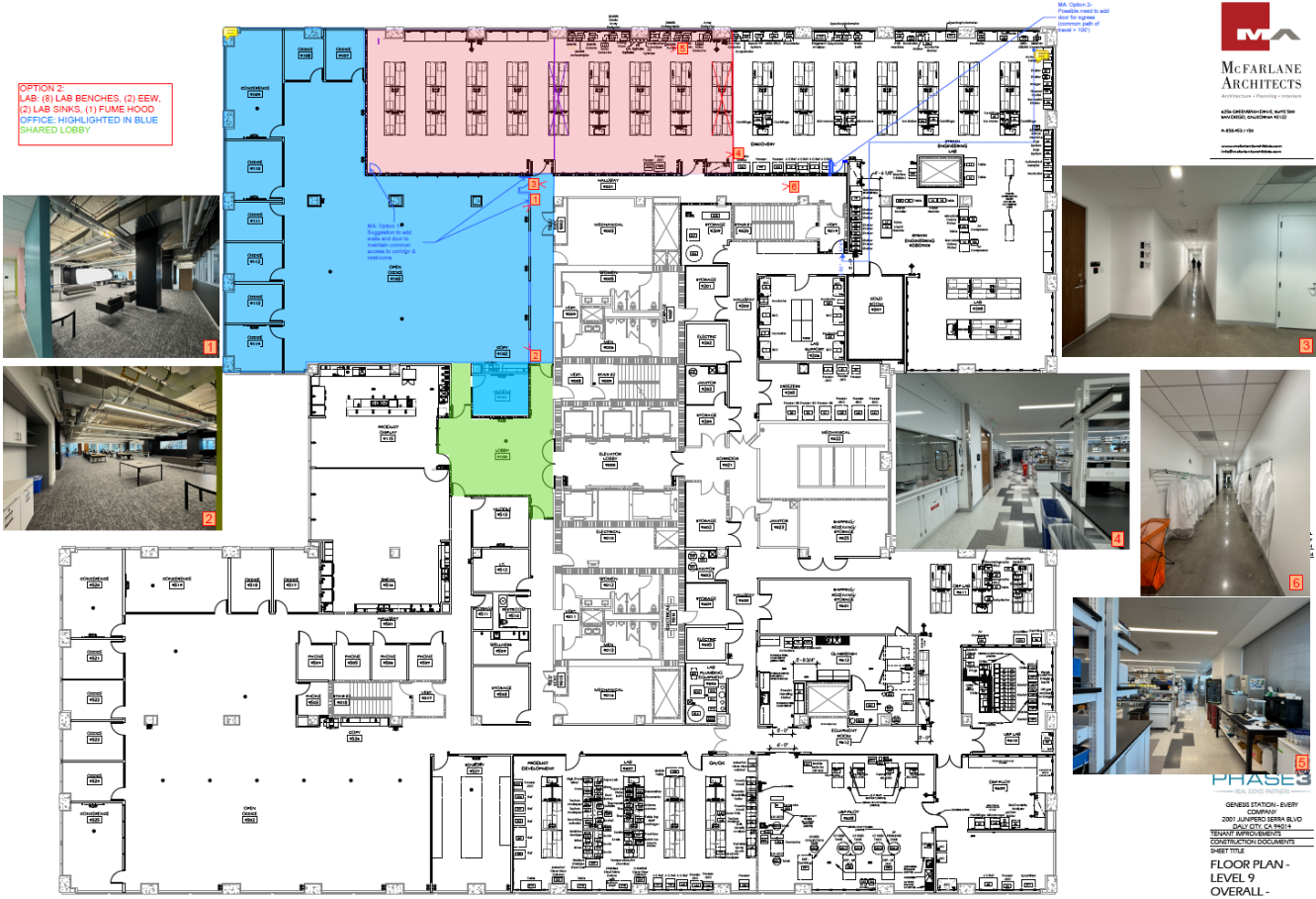
PHASE 3
 REAL ESTATE SERVICES
 GENESIS STATION, EVERY COMPANY
 2001 JUMPING BEAN BLVD
 SAN JOSE, CA 95131
 TENANT IMPROVEMENT
 CONSTRUCTION DOCUMENTS
 SHEET TITLE
FLOOR PLAN - LEVEL 9 OVERALL - TENANT FURNISHINGS
 SHEET NUMBER
TF 290
 03/17

OPTION 1:
LAB: (4) LAB BENCHES, (1) EEW,
(0) LAB SINKS, (0) FUME HOODS
OFFICE: HIGHLIGHTED IN BLUE
SHARED LOBBY

FLOOR PLAN OPTION 2

ALL RIGHTS RESERVED. NO PART OF THIS DOCUMENT IS TO BE REPRODUCED OR TRANSMITTED IN ANY FORM OR BY ANY MEANS, ELECTRONIC OR MECHANICAL, INCLUDING PHOTOCOPYING, RECORDING, OR BY ANY INFORMATION STORAGE AND RETRIEVAL SYSTEM, WITHOUT THE WRITTEN PERMISSION OF MCFARLANE ARCHITECTS, INC.

OPTION 2:
 LAB: (8) LAB BENCHES, (2) EEW,
 (2) LAB SINKS, (1) FUME HOOD
 OFFICE: HIGHLIGHTED IN BLUE
 SHARED LOBBY



PHASES
 GENERAL CONTRACTOR
 GENERAL STATION - DIVERSITY COMPANY
 2001 JUPITER BLVD
 PALM CITY, CA 32909
 TENDR APPROVALS ONLY
 CONSTRUCTION DOCUMENTS
 SHEET TITLE
FLOOR PLAN - LEVEL 9
 OVERALL - TENANT FURNISHINGS
 SHEET NUMBER
TF-290
 01/17

FLOOR PLAN - LEVEL 9 OVERALL - TENANT FURNISHINGS



OPTION 2:
 LAB: (8) LAB BENCHES, (2) EEW,
 (2) LAB SINKS, (1) FUME HOOD
 OFFICE: HIGHLIGHTED IN BLUE
 SHARED LOBBY





CONTACT INFORMATION



CALE MILLER
cale@hughesmarino.com
415.890.5918
Lic. #01714837



CAMERON LOVE
cameron@hughesmarino.com
415.431.3211
Lic. #01914963



REED WATSON
reed@hughesmarino.com
925.876.3819
Lic. #02228787

ONE EMBARCADERO CTR, 16TH FL
SAN FRANCISCO, CA 94111
844.662.6635 | hughesmarino.com

HUGHESMARINO