

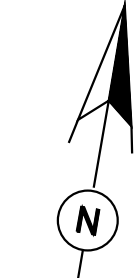
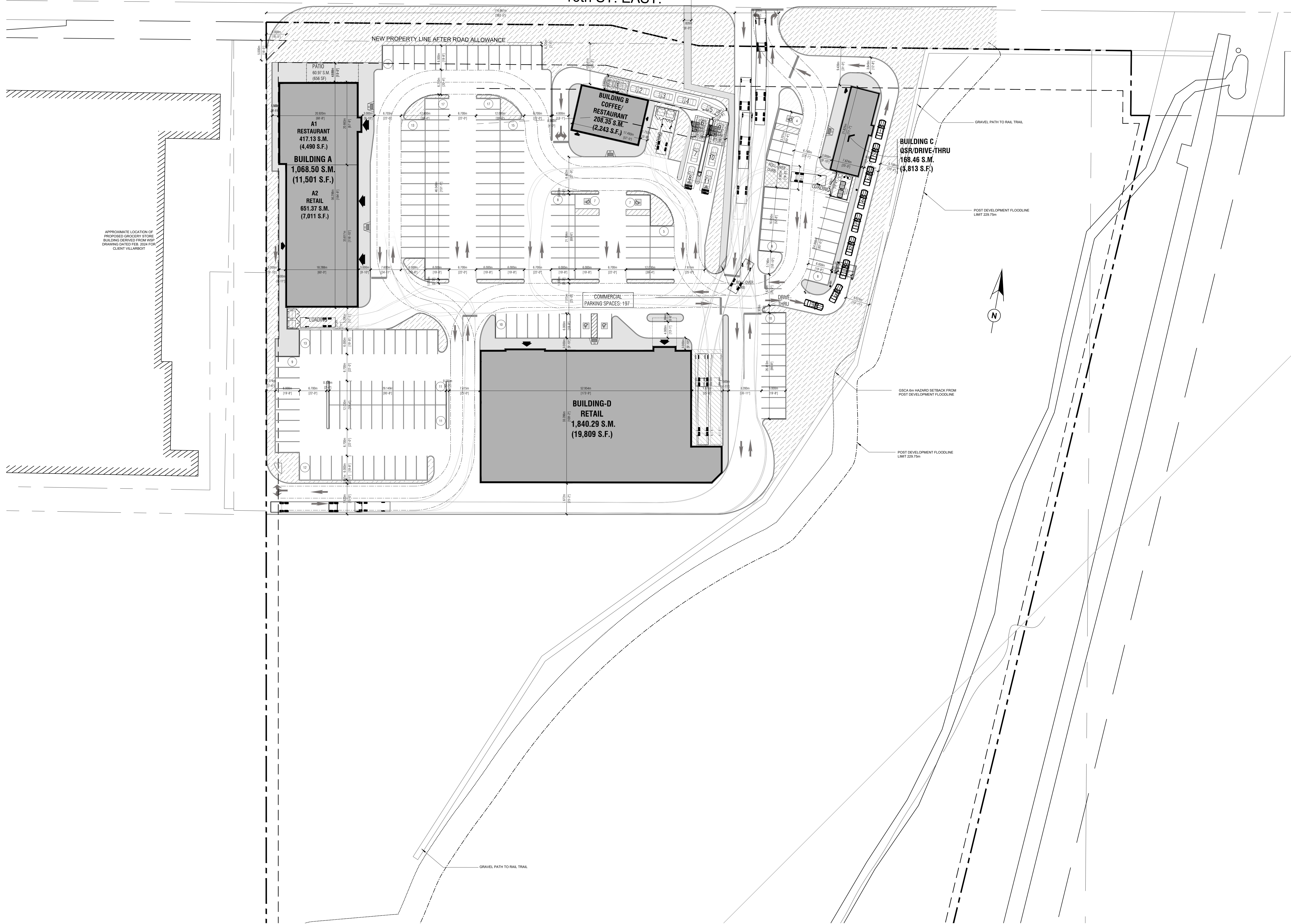
16th ST. EAST.



**STATISTICS:**

TOTAL GFA (COMMERCIAL)	3,285.60 sm (35,366sf)
RETAIL	
BUILDING-A (A2)	651.37 sm (7,011 sf)
BUILDING-D	1,840.29 sm (19,809 sf)
TOTAL RETAIL GFA	2,491.66 sm (26,820 sf)
REQUIRED PARKING	
Parking Coef.	Req Prov
1.0 per 24.0 sm	104 104
RESTAURANT WITH DRIVE THRU	
BUILDING-A (A1)	417.13 sm (4,490 sf)
BUILDING-B	208.35 sm (2,243 sf)
BUILDING-C	168.46 sm (1,813 sf)
TOTAL RESTAURANT GFA	793.94 sm (8,546 sf)
REQUIRED PARKING	
Parking Coef.	Req Prov
1.0 per 9.0 sm	89 89
1.0 per 7.5 sm	9 9 (FOR BUILDING A (A1) PATIO)
TOTAL REQUIRED PARKING	= 202
TOTAL PROVIDED PARKING	= 198

APPROXIMATE LOCATION OF PROPOSED GROCERY STORE BUILDING DERIVED FROM WSP DRAWING DATED FEB. 2024 FOR CLIENT VILLARROTT



WB-20-180 - Tractor & Semi-Trailer	Overall Length	4,475mm
	Overall Width	2,550mm
	Over Body Height	4,000mm
	Over Body Ground Clearance	1,400mm
	Truck Wheel Track	1,800mm
	Truck Turn-off Time	4.00s
	Curb to Curb Turning Radius	46,916ft
Hino 195 F. 4-Door SPR6 Refuse Truck	Overall Length	5,175mm
	Overall Width	2,550mm
	Over Body Height	4,000mm
	Over Body Ground Clearance	1,400mm
	Truck Wheel Track	1,800mm

NOTES:  
 SUBJECT TO SURVEY. PROPERTY LINES AND TOPOGRAPHIC FEATURES ARE APPROXIMATE ONLY.  
 SITE SUBJECT TO BY-LAW REVIEW AND REGULATIONS.

OWNER:

**EXQUISITE  
 REAL ESTATE HOLDING**

SYDENHAM SQUARE  
 2275 16th STREET EAST,  
 OWEN SOUND, ONTARIO  
 N4K 5N3

**SITE PLAN - PRELIMINARY**

PROJECT #: 25534  
 DATE: 2026.03.09  
 SCALE: 1:400



SK-7