

±4,542 SF Industrial – Airport Business Park

Torrance, California

FOR SUBLEASE



Sheva Hosseinzadeh

Principal
Sheva@cbcblair.com
(562) 400-5949

Patrick Michel

Vice President
Patrick@cbcblair.com
(323) 594-0284

Matthew Chung

Associate
Mchung@cbcblair.com
(562) 667-7335







 **COLDWELL BANKER
COMMERCIAL** BLAIR

23883 Madison Street

Torrance, California

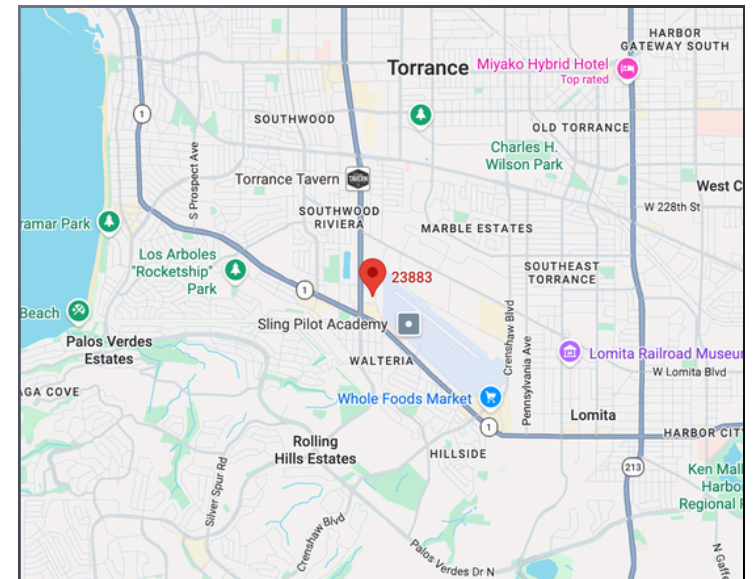


FOR SUBLEASE

-  Airport Business Park
-  Easy Access to Major Roads
-  Corner Unit
-  Strong Visibility
-  Prime Torrance Location
-  Tenant to Verify Power

PROPERTY HIGHLIGHTS

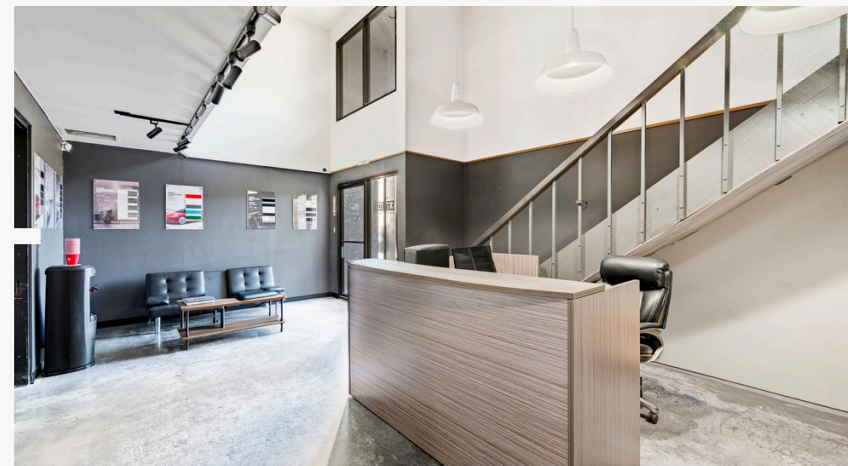
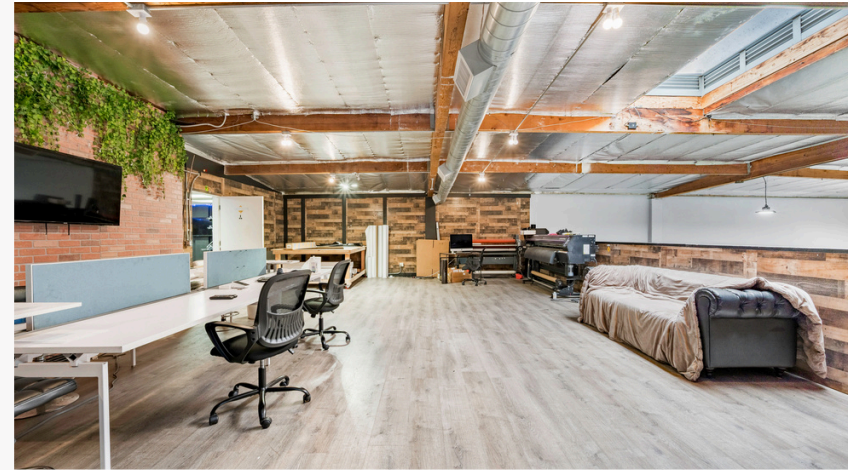
Rate	\$6,956/mo
CAM Fee	\$250/mo
Building Size	±4,542 SF Bldg
Clear Height	20'
GL Doors	1 GL (10' x 12')
Zoning	TOMI-LT
Power	200a/120 - 208v 3



23883 Madison Street

Torrance, California

 COLDWELL BANKER
COMMERCIAL | BLAIR



23883 Madison Street

Torrance, California

 COLDWELL BANKER
COMMERCIAL | BLAIR





**COLDWELL BANKER
COMMERCIAL**
BLAIR

Sheva Hosseinzadeh | Principal
(562) 400-5949
Sheva@cbcblair.com
Lic. #01922147

Patrick Michel | Vice President
(323) 594-0284
Patrick@cbcblair.com
Lic. #01924800

Matthew Chung | Associate
(562) 667-7335
Mchung@cbcblair.com
Lic. #02283482

CBCBLAIR.COM

Coldwell Banker Commercial Blair
This information was deemed as reliable but is also not guaranteed.