

FOR LEASE | LAGUNA MEDICAL OFFICE SPACE

7807 LAGUNA BLVD., ELK GROVE, CA 95758

LOCATED ON LAGUNA BLVD., NEAR BRUCEVILLE RD WITH CLOSE PROXIMITY TO HWY 99



Caroline Sun Lafler

Vice President

916.677.8115

clafler@tricommercial.com

LIC: #00717367

3400 Douglas Blvd, Suite 190,
Roseville, CA 95661

FOR LEASE

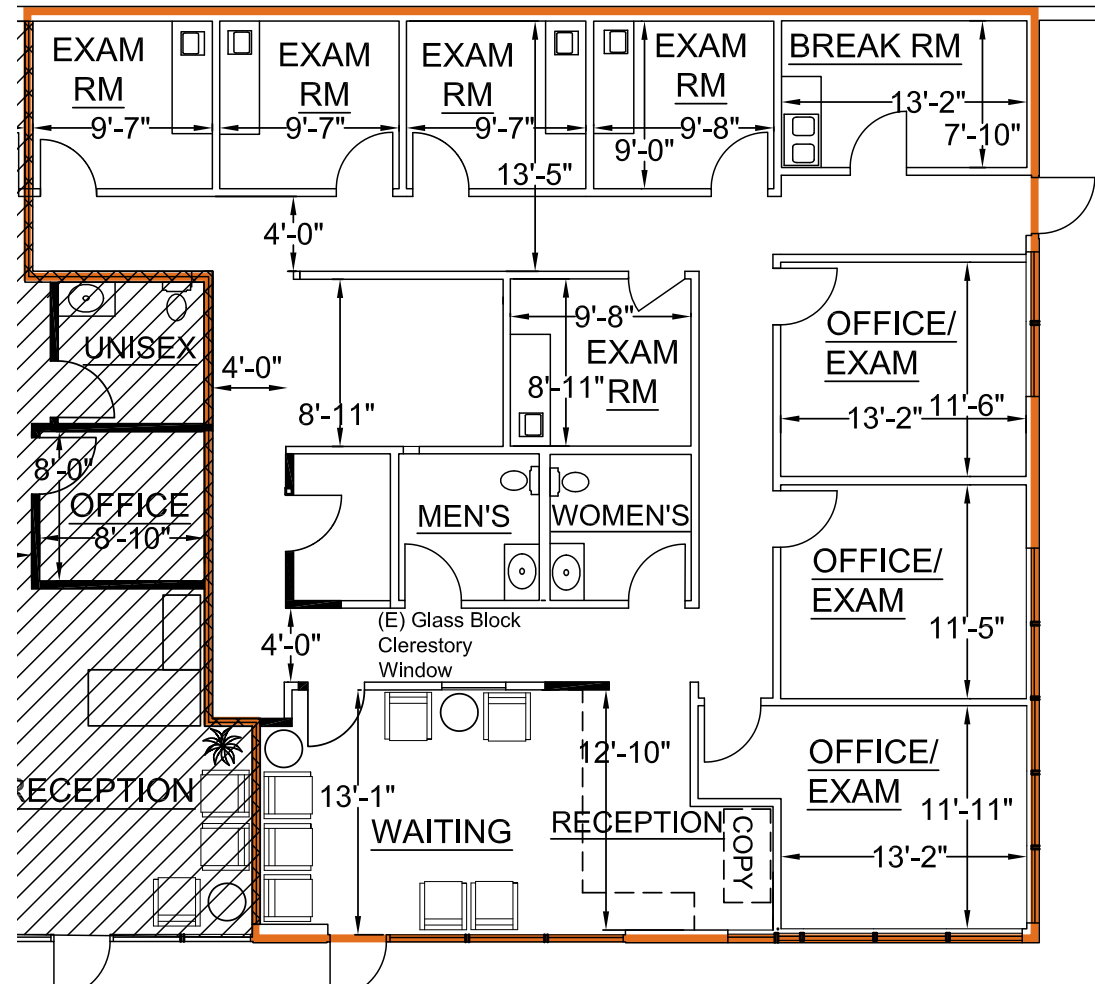
ELK GROVE, CA
MEDICAL OFFICE SPACE

Available For Lease

- Suite 480: ±2,254 RSF Medical Space

Property Highlights

- Building signage
- Plenty of parking
- Close proximity to major hospitals
- Close to Hwy 99
- Professionally managed
- Walking distance to restaurants and shopping



LEASE RATE: \$2.10/SF/MONTH; NNN

NNN Estimated \$0.78/SF

Caroline Sun Lafter, VP

916.677.8115

clafler@tricommercial.com

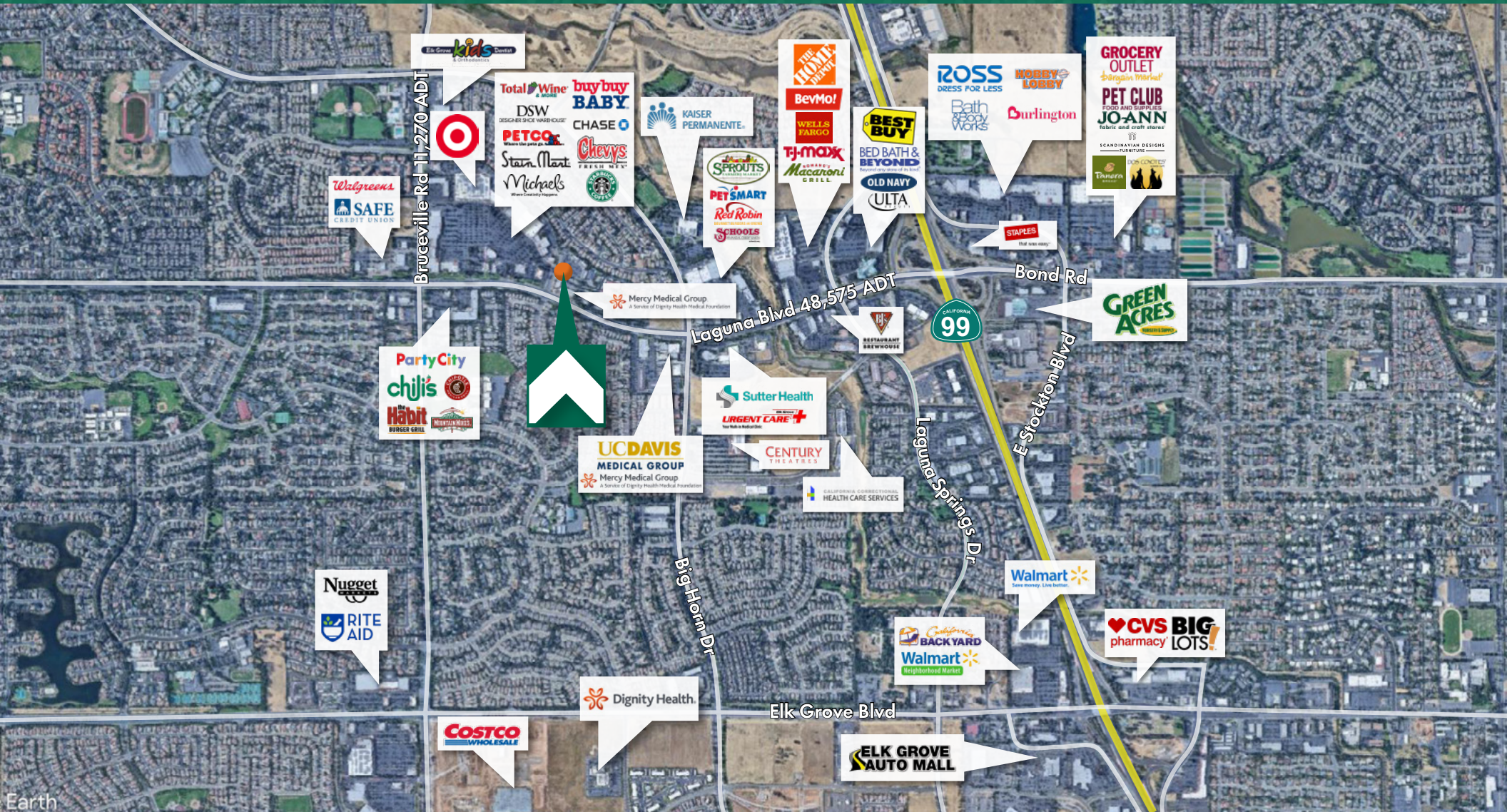
LIC: #00717367



www.tricommercial.com

FOR LEASE

ELK GROVE, CA MEDICAL OFFICE SPACE



Caroline Sun Lafter, VP

916.677.8115

clafler@tricommercial.com

LIC: #00717367



www.tricommercial.com