

FOR LEASE

17,632 SF Industrial Unit

18056 Rowland St.
City of Industry, CA 91748

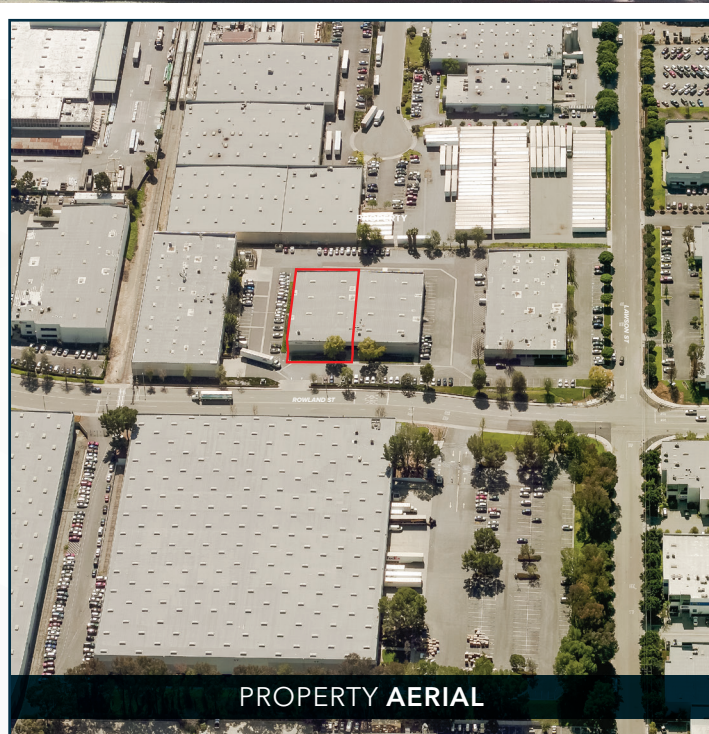


Building Characteristics

- Available SF: 17,632 SF
- Office Size: 3,800 SF
- Dock-High Doors: Three (3) 10' x 18'
- Ground-Level Loading: One (1) 10' x 12'
- Clear Height: 18'
- Construction Type: CTU - Concrete Tilt-Up
- Power: 200 Amps; 277-480 Volts; 3 Phase
- Zoning: M

Property Highlights

- Master Planned Industrial Park
- Great Central City of Industry Location
- Available Dock-High & Ground-Level Loading
- Immediate Access to the Los Angeles/ Pomona 60 Freeway
- Includes CAM Fees



LEASE RATE:

\$1.55 PSF GRS

Pat Bogan

Senior VP | Lic. ID # 01215727

P \\ 909.245.1480

E \\ pbogan@lee-associates.com

Steve Coulter

Senior VP | Lic. ID # 01215727

P \\ 909.287.3488

E \\ scoulter@lee-associates.com

Jamie Scott

Associate | Lic. ID # 02228289

P \\ 714.343.1999

E \\ jscott@lee-associates.com

Carlos Leyva

Associate | Lic. ID # 02121441

P \\ 714.718.3982

E \\ cleyya@lee-associates.com

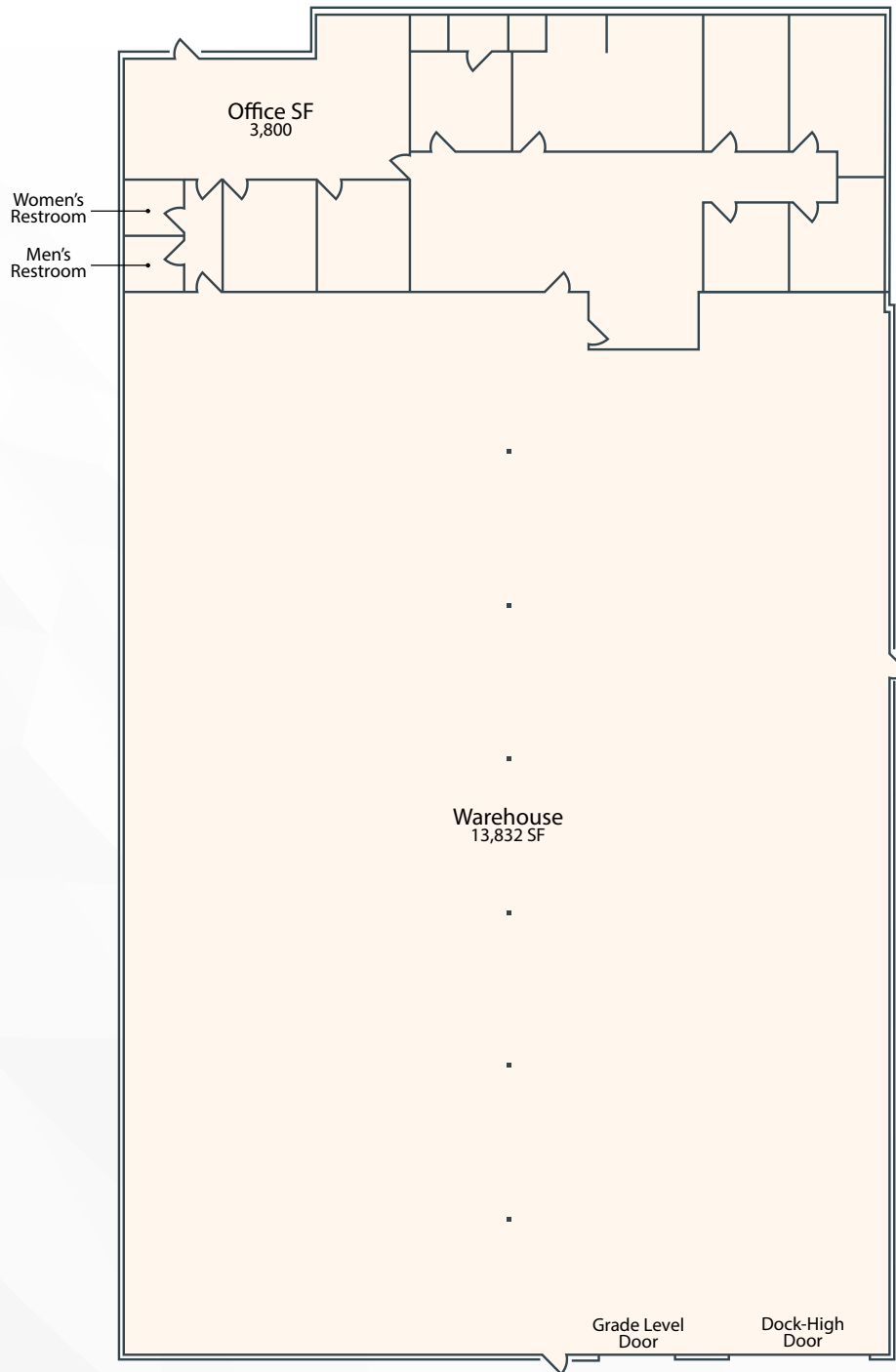
LEE & ASSOCIATES
COMMERCIAL REAL ESTATE SERVICES

The information contained herein is obtained from sources believed to be reliable. However, we have not verified it and make no guarantees, warranties or representations as to the completeness or accuracy thereof. The presentation of this property is used for example and is submitted subject to errors, omissions, change of price or conditions, and is subject to prior sale, lease or withdrawal without notice.

FOR LEASE

17,632 SF Industrial Unit

18056 Rowland St.
City of Industry, CA 91748



PROPERTY SITE PLAN
Not To Scale/ Not Exact

Pat Bogan

Senior VP | Lic. ID # 01215727
P \\ 909.245.1480
E \\ pbogan@lee-associates.com

Steve Coulter

Senior VP | Lic. ID # 01215727
P \\ 909.287.3488
E \\ scoulter@lee-associates.com

Jamie Scott

Associate | Lic. ID # 02228289
P \\ 714.343.1999
E \\ jscott@lee-associates.com

Carlos Leyva

Associate | Lic. ID # 02121441
P \\ 714.718.3982
E \\ cleyva@lee-associates.com



The information contained herein is obtained from sources believed to be reliable. However, we have not verified it and make no guarantees, warranties or representations as to the completeness or accuracy thereof. The presentation of this property is used for example and is submitted subject to errors, omissions, change of price or conditions, and is subject to prior sale, lease or withdrawal without notice.

FOR LEASE

17,632 SF Industrial Unit

18056 Rowland St.
City of Industry, CA 91748



ADDITIONAL PHOTOS

Pat Bogan

Senior VP | Lic. ID # 01215727

P \\ 909.245.1480

E \\ pbogan@lee-associates.com

Steve Coulter

Senior VP | Lic. ID # 01215727

P \\ 909.287.3488

E \\ scoulter@lee-associates.com

Jamie Scott

Associate | Lic. ID # 02228289

P \\ 714.343.1999

E \\ jscott@lee-associates.com

Carlos Leyva

Associate | Lic. ID # 02121441

P \\ 714.718.3982

E \\ cleyva@lee-associates.com

 **LEE & ASSOCIATES**
COMMERCIAL REAL ESTATE SERVICES

The information contained herein is obtained from sources believed to be reliable. However, we have not verified it and make no guarantees, warranties or representations as to the completeness or accuracy thereof. The presentation of this property is used for example and is submitted subject to errors, omissions, change of price or conditions, and is subject to prior sale, lease or withdrawal without notice.