

# Regency Plaza 555 Passaic Ave West Caldwell NJ

SHANE WIERKS  
swierks@jefferyrealty.com  
C: 908.581.7781  
O: 908.668.9600 EXT. 223

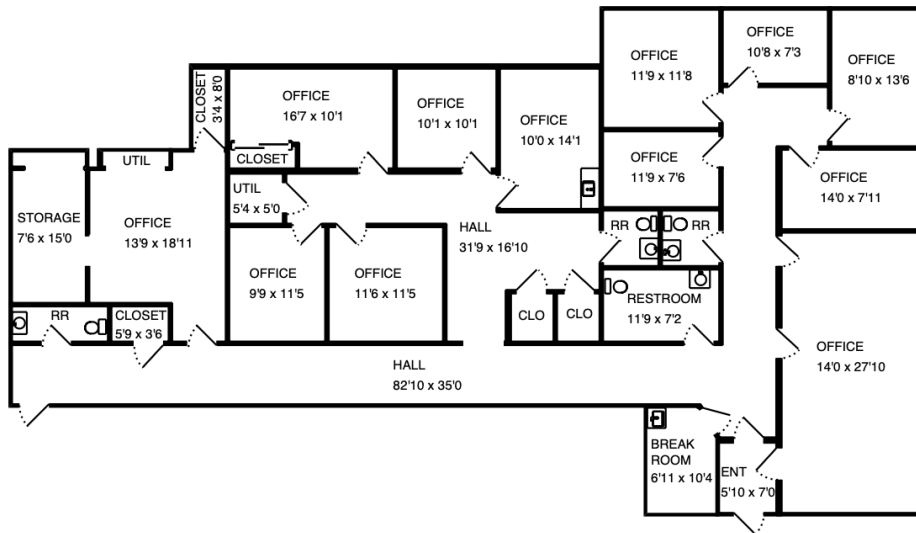
**For Lease** | 3,251 SF w/ Drive Thru  
**For Lease** | 1,784 SF 2nd Floor Unit

KYLE GOWOREK  
kgoworek@jefferyrealty.com  
C: 201.978.1770  
O: 908.668.9600

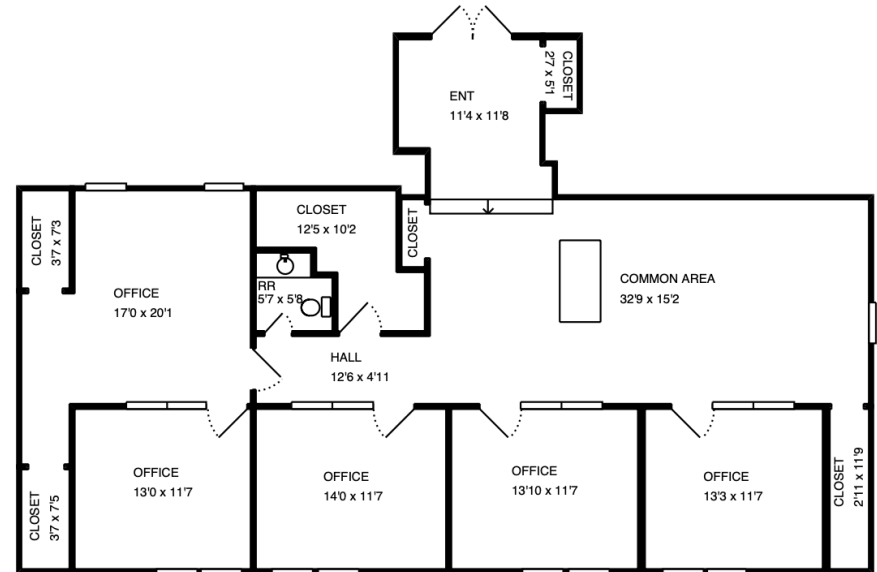


# Regency Plaza

555 Passaic Ave West Caldwell NJ



**3,251 SF End Cap Unit with Drive Thru**



**1,784 sf 2nd Floor Unit**

**AVAILABLE**

3,251 SF End Cap w/ Drive Thru  
1,784 sf 2nd Floor Unit

**PRICE**

Call for Quote

**NNN**

\$10.00 /SF

**PARKING**

130 Spaces

**TRAFFIC**

21,978 VPD On Passaic Ave

**FRONTAGE**

300" on Passaic Ave

**NEIGHBORING TENANTS**

- Indian Resaurant
- Cafe & Sushi Llc
- Flower Shop
- Barber Shop
- Allure Day Spa Nail Salon Llc
- Sap 555 Llc

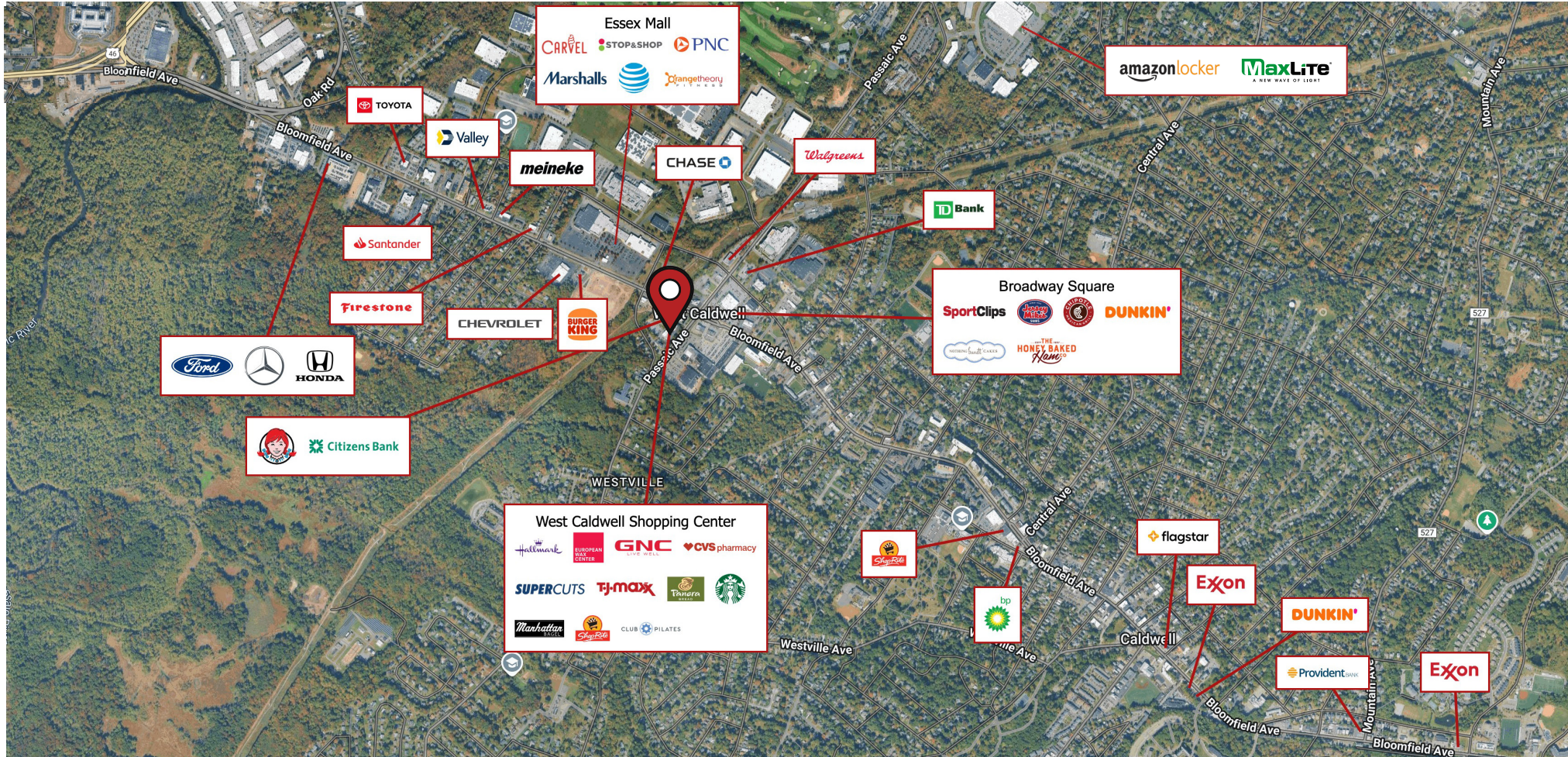
# Regency Plaza

## 555 Passaic Ave West Caldwell NJ



# Regency Plaza

## 555 Passaic Ave West Caldwell NJ



### DEMOGRAPHICS

	TOTAL POPULATION	AVERAGE HHI	HOUSEHOLDS	TOTAL BUSINESSES	TOTAL EMPLOYEES
<b>1 Mile</b>	8,048	\$189,470	3,399	646	7,837
<b>3 Miles</b>	60,353	\$206,043	22,931	4,880	66,741
<b>5 Miles</b>	180,764	\$218,361	67,888	13,021	137,826

