



Best Corporate Office Deal in Westport!

88 Post Road West
Westport, Connecticut



Executive Summary

88 Post Road West represents a unique opportunity to lease corporate office space at a super competitive price in Westport.

The 2,200 SF space on the third floor also features several window offices and access to a beautiful outdoor deck with views of downtown.

The property has excellent parking at 4/1000, of which 1/1000 in the garage.

Ownership has beautifully fitted out the current tenant's offices.

The rental rate for this type of property is unbeatable in this market.

Anybody looking for corporate office space in Westport should seriously consider 88 Post Road West.

All information is subject to errors and omissions

88 Post Road West
Westport, Connecticut



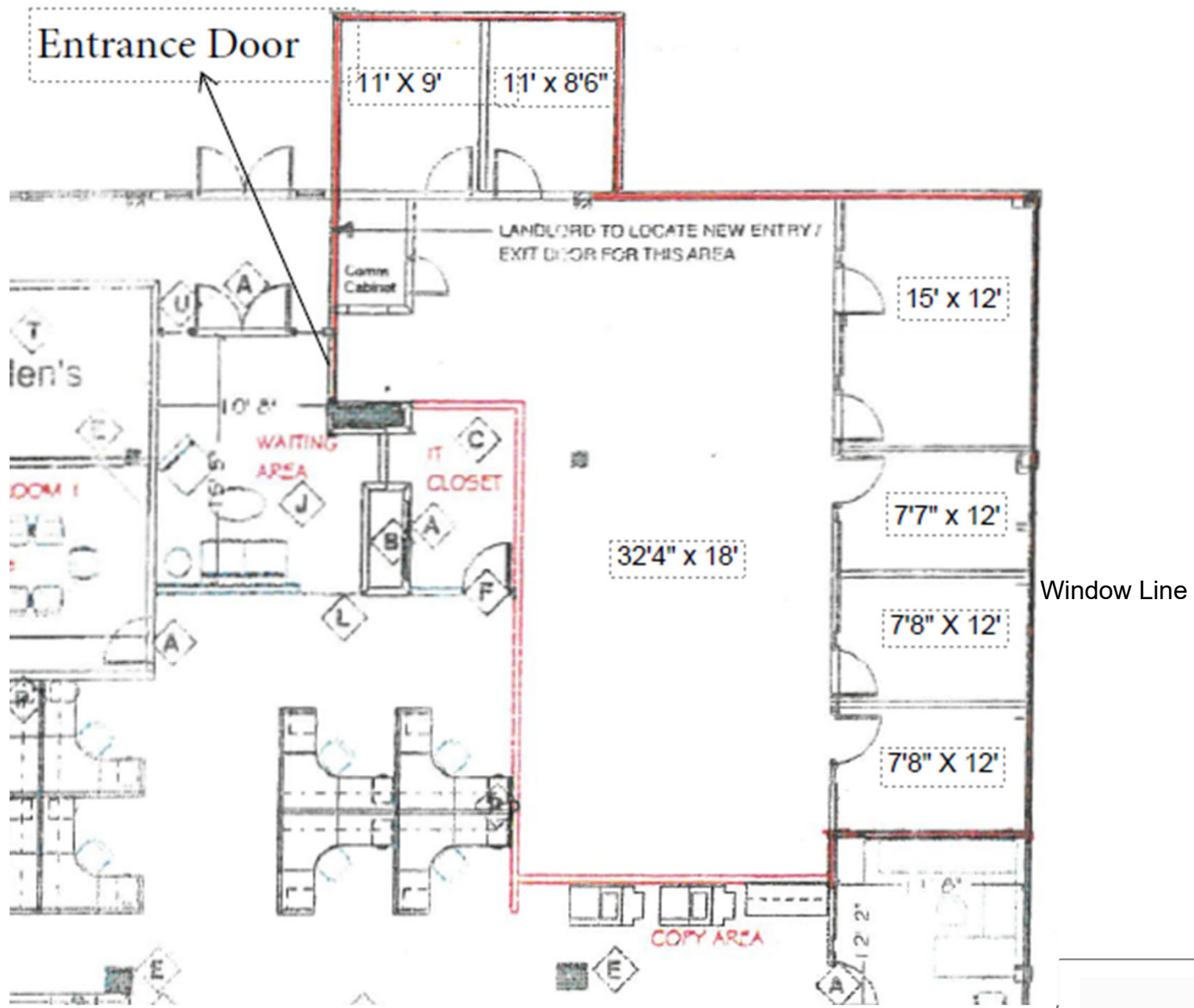
About the Spaces

Space Available:	2,200 SF Third floor
Elevator:	Yes
HVAC:	Electric heat pumps, central A/C
Rent:	\$28 SF Gross plus Utilities
Utilities:	Electric – \$3.25 SF
Parking:	4/1,000 of which 1/1000 in the garage
Availability:	Immediate
Outdoor Deck:	The 2,200 SF has access to the outdoor deck.

All information is subject to errors and omissions

88 Post Road West
Westport, Connecticut





Third Floor Space Layout – 2,200 SF





Sample Tenant Fit up





Sample Tenant Fit up





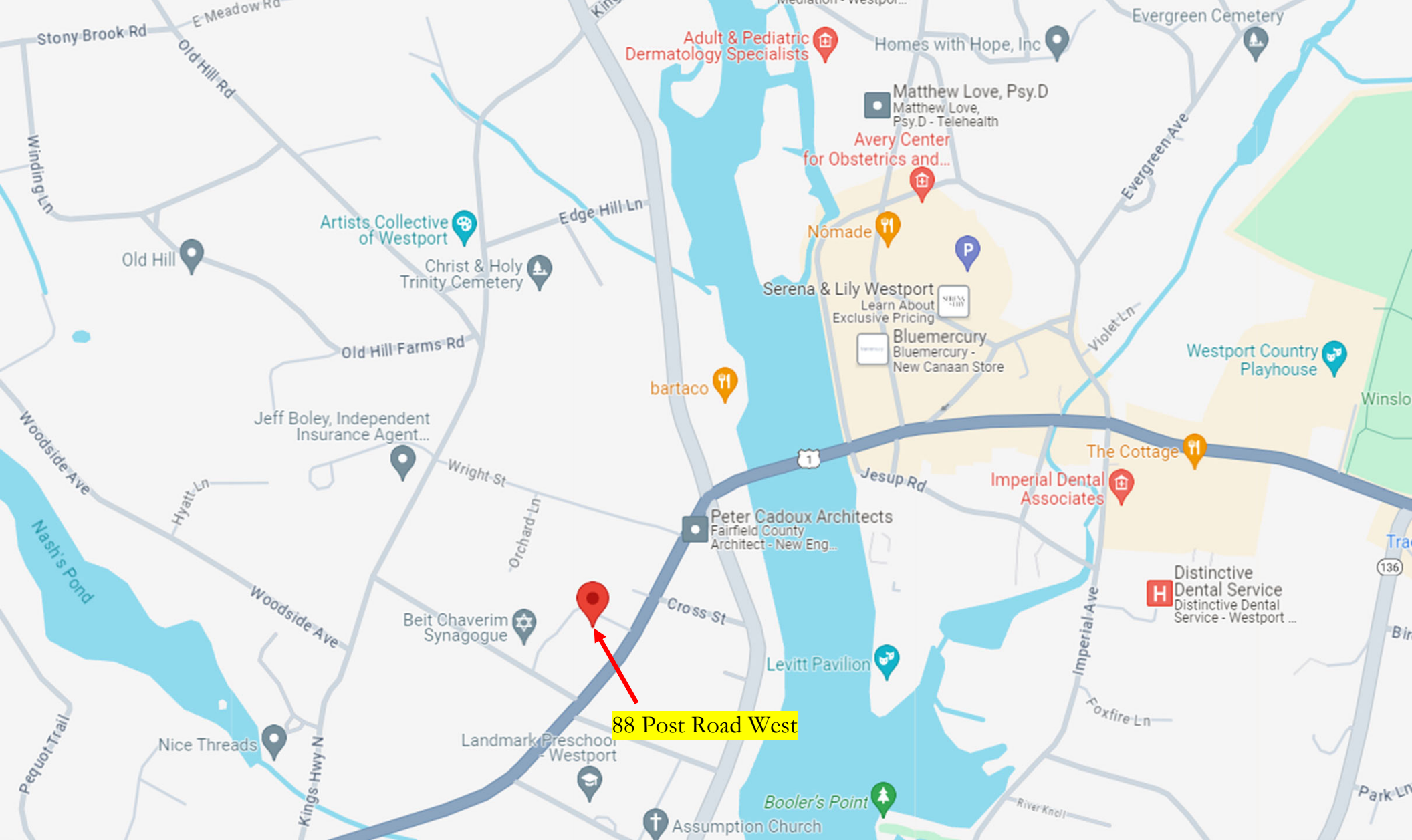
Outdoor Patio





Aerial View and Parking





Location Map



For additional information, please contact:

Franco Fellah
Executive Vice President

HK Group
49 Riverside Avenue
Westport, CT 06880

O: 203. 454. 8700
C: 203. 981. 3476
FFellah@hkgrp.com

88 Post Road West
Westport, Connecticut

